

COMPANY SHOWCASE

AUTUMN 2015

Our regular 'Company Showcase' feature is the opportunity for suppliers of goods and services from all branches of the geomatics industry to acquaint readers with their latest offerings. Innovation is key to success in today's geomatics market place... one where traditional boundaries are being blurred by the latest trends in convergence and functionality, and it is vital that users can take advantage of these technological advances.

Surveying equipment now incorporates GNSS, GIS, Laser-based and communications, as well as optical capabilities to offer ever higher accuracy and greater local processing power at lower cost. Remote Sensing, in the widest sense, achieves new levels of resolution and precision from Laser, LiDAR, satellite, and aerial sensors, including those carried aboard a new generation of UAVs. The huge volumes of geodata captured by these and other sensors and devices are incorporated in ever more innovative information and location based services that support public and private sector decision makers at all levels, as well as citizens.

Look also for advances linked to the convergence between technologies, from CAD and BIM suites now incorporating GIS and decision support tools to smart phones used to collect and disseminate location-tagged data for commercial and citizen-oriented Open Source applications. For field use, consumers are now spoiled for choice with a wide variety of portable rugged and semi-rugged geodata collection devices based on PDA, tablet and notebook computers. And, of course, the advent of data and software as hosted services via the Cloud presents new challenges and opportunities for users everywhere.

This is an exciting decade for all sectors of the geomatics industry, with innovation powered by creativity, convergence and advances in several allied technologies. Watch this space to keep yourself up to date!

**Next available Showcase:
Spring 2016 (Published March)
Entry deadline: January 2016**

CADCORP

1



In web mapping, simplicity is the ultimate sophistication*

Cadcorp's flagship web mapping product – **Web Map Layers** – is now even easier to use.

Web Map Layers 8.0 features a completely redesigned, responsive user interface; stripping it down to the bare essentials. Don't think for a moment that the product has become less powerful. We think that there is no place for complexity in a user interface.

You can judge for yourself by going to the on-line demonstrator at <http://cdcp.io/g>

Web Map Layers 8.0. Sharing Local Knowledge™ on desktop, tablet and mobile devices.

** The statement 'Simplicity is the ultimate sophistication' is often attributed to Leonardo da Vinci.*

Cadcorp

Sterling Court,
Norton Road, Stevenage
Hertfordshire SG1 2JY
United Kingdom

Tel: +44 (0) 1438 747996
Fax: +44 (0) 1438 747997
e-mail: cadcorp@cadcorp.com
www.cadcorp.com

CARLSON SOFTWARE

2



Specializing in field data collection, CAD design software, and machine control products for the land surveying, civil engineering, construction, and mining industries worldwide, Carlson Software provides one-source technology solutions with complementary hardware options for the total project.

Among Carlson Software's highlights at Intergeo will be its SurvPC data collection software – the cross platform field solution that allows users to work natively in Esri®, DGN® and DWG with no conversion. Stake out, identify, or draw to any existing feature in Esri, DGN and DWG with Carlson SurvPC, which can be purchased with the Esri OEM engine built-in. For added ease of use in the field, Carlson recommends the Panasonic FZ-M1, the world's thinnest and lightest fully-rugged 7" Windows® tablet, available directly from Carlson. Also new from Carlson is Precision 3D-Culverts, a truly revolutionary 3D design software.

Visit us at Intergeo, Stuttgart, Germany, 15-17 September – Hall 8, Booth C8.017

Carlson Software Inc./Carlson EMEA

Tel: +31 36 750 1781
e-mail: info@carlsonsw.com
www.carlsonsw.com

CHC NAVIGATION

3



CHC Navigation designs, manufactures and markets a wide range professional GPS/GNSS solutions with a strong international presence and employs more than 800 professionals worldwide. Since 2003, CHC Navigation has been providing thousands of advanced GNSS receivers worldwide combining high performances and features.

GNSS RTK Solutions

The X91+ GNSS is a compact GNSS receiver designed for high accuracy and productivity. Powered by leading 220 channels GNSS core, the X91+ GNSS provides a cost effective solution to any surveying task.

GPS/GIS Handheld Solutions

The LT500 series covers three accuracy ranges from sub-meter to centimeter accuracy and is the most competitive full GNSS positioning solution for Survey, Construction and GIS professionals.

Senor Solutions

N71 GNSS Sensor designed to bring a cost-effective positioning solution for RTK network operators, precision farming and machine guidance system integrators and marine survey professionals.

**Meet us at Intergeo: Hall C2,
Booth No. E2.001**

CHC Navigation

599 Gaojing Road, Building C
201702 Shanghai, China
e-mail: sales@chcnv.com

www.chcnv.com

China (Shanghai) – Germany (Frankfurt)
– USA (Dubuque)

EUROPEAN SPACE IMAGING

4



*WorldView-3, Pudong, Shanghai, China,
18 Dec 2014. © DigitalGlobe supplied
by European Space Imaging*

keeping you in the picture

Europe's leading VHR imagery provider

European Space Imaging is the 'go to' company in Europe if you are looking for very high-resolution satellite imagery. Our company mission is to offer customers access to the highest resolution imagery on the market. Our latest 'best' offering is WorldView-3 data from the newest and most capable VHR satellite in the DigitalGlobe constellation.

We also provide direct local tasking from our European ground station which enables optimised collection strategies, flexibility and real-time weather assessments for new collections.

Since 2002 European Space Imaging offers services and data from the most advanced VHR satellites to customers throughout the region.

European Space Imaging

Arnulfstrasse 199
80634 Munich, Germany
Tel: +49 89 1301420
Fax: +49 89 13014222
e-mail: info@euspaceimaging.com
www.euspaceimaging.com



GENEQ INC

5



The Best just got Better.

The High-Accuracy GNSS Receiver Designed Specifically for iPad/iPhone

The New iSXBlue II+ GNSS is a palm-sized receiver that delivers real-time, high-accuracy performance using GPS/GLONASS satellites and free SBAS corrections. The ideal choice of a variety of mapping apps, including GIS, Forestry, Mining, Utilities, Agriculture, Surveying and Environmental, at a price you can afford.



The New SXPad ProL2 Dual frequency GPS and GLONASS

This all-in-one 220-channel data collector is designed to deliver data up to 8 mm accuracy in RTK mode. With a IP65 rugged design for harsh environments, it resists to water, dust and drops. This handheld device offers a price/quality ratio that facilitates decision making for accessible and effective data acquisition.

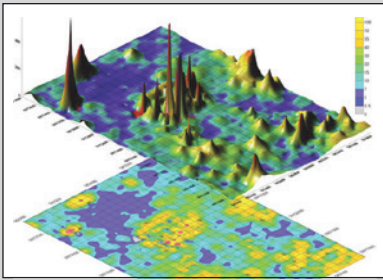
**See us at the INTERGEO 2015
Booth: F4.093**

Geneq Inc.

10700 Secant St., Montreal
QC, H1J 1S5, Canada
Tel: +1-514-354-2511
e-mail: info@geneq.com
www.sxbluegps.com



Golden Software creates powerful data visualization software that will exceed your expectations, not your budget.



For over 32 years we have dedicated ourselves to creating the highest quality software that best represents our customers' data. Tell your data's unique story using our robust features and functionality. You will not sacrifice power for affordability with our software.

Our Suite of Software

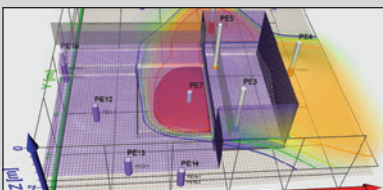
- **Surfer®:** Contouring, Gridding & 3D Surface Mapping
- **Grapher™:** 2D & 3D Graphing
- **Voxler®:** 3D Data Visualization
- **MapViewer™:** Thematic Mapping & Spatial Analysis
- **Didger®:** Digitizing & Coordinate Conversion
- **Strater®:** Well Log, Borehole & Cross Section Plotting

All Customers Receive

- **Free technical support**
- Free maintenance updates
- Upgrade pricing on all future versions
- 30 day money-back guarantee

Learn more:

www.goldensoftware.com/showcase



handheld



The NAUTIZ X8 has a 4.7-inch high-brightness state-of-the-art capacitive screen. See www.handheldgroup.com/Nautiz-X8

Rugged Computers for Tough Environments

Handheld Group is a fast-growing manufacturer of ultra-rugged tablets and, - all carrying high IP-ratings and meeting stringent MIL-STD-810G standards for withstanding water, dust, shock and extreme temperatures.

We work with a strong network of dealers worldwide supplying rugged computers to a wide spectrum of field applications, often in the most demanding environments.



Handheld has local offices in Sweden, Finland, Italy, Netherlands, Germany, Switzerland, UK, Australia and the USA. You will find our online product information in 9 different languages.

Meet us at InterGeo in Stuttgart, Germany 15-17 September 2015, Hall 8, stand C8.084

Handheld Group AB

Tel: +46 510 54 71 70
e-mail: info@handheldgroup.com
www.handheldgroup.com



The map of the future is here. A Hexagon Smart M.App® is a targeted, lightweight map applications that solves real business problems. They deliver a fresh and powerful way to gain insight into the shifts and transformations of our earth, our cities, our business, our lives. Each Hexagon Smart M.App combines multi-source content, sophisticated analytics, and tailored workflows, fused together into a dynamic user experience. Now you can see the world in varying views, incorporating multiple types of fresh data.



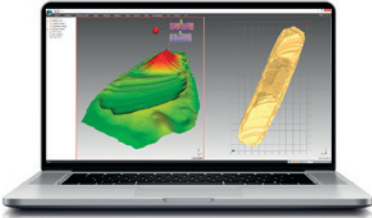
Hexagon Geospatial's M.App Portfolio offers a modern, cloud-based platform for building and using progressive geospatial applications. Through the M.App Portfolio, our partners have the ability to design, build and deploy their own Hexagon Smart M.Apps, using core technologies that our customers know and trust.

By enabling the development and distribution of elegant, industry-specific applications that can be quickly implemented, Hexagon Geospatial is taking the geospatial industry to the next level.

Visit us at INTERGEO Hall 4 Booth D4.035

Hexagon Geospatial

5051 Peachtree Corners Circle
Suite 100
Norcross, GA 30092
marketing@hexagongeospatial.com
www.hexagongeospatial.com



3DReshaper, the easy-to-use and affordable 3D scanner software

3DReshaper is a software dedicated to point cloud processing for various applications, like Cultural Heritage, Architecture, Geology, Mine, Quarry, Digital Terrain Modelling, Civil Engineering and Shipbuilding.

The most powerful meshing engine

3DReshaper is the best tool on the market to create high-quality and aesthetic 3D meshes, but It includes also a wide range of features like Monitoring, Alignment, Textures, Ground Extraction, Tunnel Analysis, Breaking Lines, Volumes and much more.

Moreover, our Surveying Plugin offers you many tools dedicated to your markets. Visit us at Intergeo - Leica Geosystems booth – Hall 4 Booth F4.049

Don't hesitate to download our demo version on www.3dreshaper.com

Technodigit
The Reshaper technology
part of Hexagon

e-mail: contact@3dreshaper.com
www.3dreshaper.com



Gets the Job Done. When precision data collection is needed, the weather doesn't matter. The job has to get done. Whether it's freezing cold, really hot, raining, snowing, or sunny – you can count on the Archer 2™. Rated to IP-68, it continues working under harsh conditions, and only takes a break when you do.

And on sunny days, the Archer 2 stays strong. Its 4.3-inch viewing area features a high-visibility, WVGA LCD screen. After dark, use the backlight to finish collecting data.

The high-sensitivity GPS/GLONASS/SBAS receiver captures the highest-quality data. Send it back to the office via long-range Bluetooth®, Wi-Fi® or 3.75G modem. Our Overtime Technology™ high-capacity battery finishes strong, with 20+ hours of operating time and recharges quickly.

Based near Birmingham, U.K., Juniper Systems designs and manufactures ultra-rugged handheld computers for extreme environments, and are ideal for surveyors' needs in the geomatics and GIS industries.

See us at InterGeo, Stuttgart, Germany, 15-17 September: Hall 4, Stand G4.026

Juniper Systems Limited

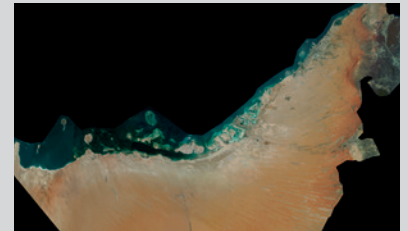
4 The Courtyard
Buntsford Gate
Bromsgrove
B60 3DJ
United Kingdom
Tel: +44 (0) 1527 870773
e-mail: infoEMEA@junipersys.com
www.junipersys.com



GLOBAL IMAGERY & MAP DATA
IMAGE PROCESSING
DIGITAL ELEVATION MODELS
VECTOR FEATURE EXTRACTION
SPECTRAL CLASSIFICATION & OBJECT-BASED IMAGE ANALYSIS



LAND INFO's updated English/Farsi 1:25,000 vector mapping & 10m DTM (Digital Terrain Model) of Iran are immediately available for more than 98% of the country.



2014 5m RapidEye ortho mosaic of the United Arab Emirates. LAND INFO imagery and mapping solutions are custom tailored to exceed project requirements.

DigitalGlobe Distribution Partner
RapidEye Direct Distributor
Authorized Intermap Data Distributor
AIRBUS DEFENCE & SPACE Image Partner
USGS Business Partner
Esri® Business Partner
USGIF Member

Tel: +1.303.790.9730
Fax: +1.303.790.9734
e-mail: sales@landinfo.com
www.landinfo.com



Laser Technology, Inc. (LTI) TruPulse® professional-grade rangefinders for GPS/GNSS laser offsets and attribute data collection.

Since the introduction of the first handheld, reflectorless total station, LTI has continuously provided solutions that simplify fieldwork for GIS professionals all over the world. By integrating a TruPulse® measurement and mapping laser with a GPS/GNSS device, you can locate multiple features from a single location. A significant advantage of adopting lasers into your workflow is that in most cases your existing equipment or GIS field data collection software will work with LTI lasers. Companies such as Esri, Trimble, Topcon and Leica all have software solutions that are already compatible to accept LTI's laser data string. The TruPulse also gives you the ability to measure additional attribute data such as heights, spans and elevations. LTI's full line of professional lasers address real-world needs from those who are sensitive to price to ones who require a high degree of accuracy.

Be the first to get a sneak peek of LTI's latest development at this year's InterGEO Conference, Hall 4 – C4-039.

Laser Technology, Inc.
 Centennial, Colorado, USA
 Tel: +1.303.649.1000
 e-mail: info@lasertech.com
www.lasertech.com



Revolutionising the world of measurement and survey for nearly 200 years, Leica Geosystems, part of Hexagon, creates complete solutions for professionals across the planet. Known for premium products and innovative solution development, professionals in a diverse mix of industries, such as aerospace and defence, safety and security, construction, and manufacturing, trust Leica Geosystems for all their geospatial needs. With precise and accurate instruments, sophisticated software, and dependable services, Leica Geosystems delivers value every day to those shaping the future of our world.

At INTERGEO, visitors to the Leica Geosystems booth can enjoy the latest innovations in measurement technology. Our vision is to provide reality capture solutions that create real digital worlds. By providing a world-class brand portfolio, we help our customers to make the best decisions for their unique needs.

Be sure to visit with us in Hall 4 Booth F4.049.

Leica Geosystems AG
 Heinrich-Wild-Strasse
 CH-9435 Heerbrugg
 Switzerland
 Tel: + 41 71 727 3131
 Fax: + 41 71 727 4674
www.leica-geosystems.com



If the size of your data prevents your users from viewing it in the applications they use every day, then you're not getting the most out of image repositories you paid good money for.

Built around the industry-standard MrSID format we pioneered, LizardTech's geospatial products help you put all of your satellite and aerial imagery and LiDAR data into efficient service through advanced compression and manipulation tools: GeoExpress enables you to compress raster and LiDAR imagery to MrSID and LAZ formats.

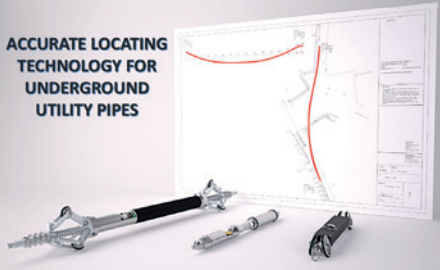
Express Server is the fastest, most reliable way to publish that imagery over networks – now with ExpressZip web application and painless automated upgrade process. LiDAR Compressor tackles colossal LiDAR point cloud data sets so you can distribute and view entire point clouds or any desired portions in your geospatial applications as efficient MrSID files. Our aim is to connect you with the imaging power inside the data you've paid for.

Download a free trial of our software today:
www.lizardtech.com/tryit

LizardTech
 Tel: 1-866-725-5211
 e-mail: info@lizardtech.com
www.lizardtech.com



**ACCURATE LOCATING
TECHNOLOGY FOR
UNDERGROUND
UTILITY PIPES**



New regulation will take you underground

Recently adopted regulations for accuracy of underground utility location, such as PAS-128 (UK) and Wion (NL), add an additional task to the service portfolio of surveyors, subsurface utility engineers and geophysicists.

To ensure that compliance with new regulations can be achieved efficiently and at an incremental cost, Reduct introduces the As-Built-Maker (ABM) pipeline mapping range that ends the perception that gyro-mapping is complex and expensive.

ABM inertial navigation probes accurately record the 3D position of pipes with an internal diameter of 40mm and up. Their compact design, simple operational handling and data-processing procedures enable skilled operators to map a 200m pipe segment within 30-45 minutes. ABM systems have no depth limits and are not impacted by electromagnetic noise.

Measurement output data includes XYZ coordinates, azimuth and inclination degrees, and can be directly uploaded to all common GIS platforms such as AutoCAD, ESRI and Microstation.

**Visit us at Intergeo 15 - 17.09.2015
in Stuttgart, Hall 8, Stand A8.042**

Reduct NV

Molenberglei 42
B-2627 Schelle
Belgium
e-mail: info@reduct.net
www.reduct.net



Are you looking for the best LiDAR instruments for your business?

Come see RIEGL's comprehensive advanced product portfolio at Intergeo!

Meet the international RIEGL expert team at booth E4.079 in hall 4 to learn about our newest achievements in laser scanning:

NEW VUX-1 Series of high performance LiDAR Sensors for KINEMATIC Laser Scanning; VUX-1HA High Accuracy, VUX-1 UAV, and the VUX-1LR Long Range – application-optimized solutions for mobile, UAV-based, and airborne laser scanning

NEW VP-1 ultra-compact, fully integrated helipod with VUX-1LR sensor, camera solution, and IMU/ GNSS integrated

NEW VMQ-450 Mobile Laser Scanning System featuring a single scanning head for cost effective mobile mapping



Don't miss our UAV area in the RIEGL booth where you can see RIEGL's RiCOPTER, Aeroscout's Scout B1-100, and more UAVs – ready for challenging LiDAR surveying missions, for yourself!

We can't wait to see you in Stuttgart!

RIEGL Laser Measurement Systems

Riedenburgstrasse 48
3580 Horn, Austria
Tel: +43 2982 4211
e-mail: office@riegl.co.at
www.riegl.com



At senseFly we develop and produce aerial imaging drones for professional applications.



eXom – the intelligent mapping & inspection drone

eXom is a sensor-rich drone for professionals, offering TripleView imaging, advanced situational awareness and flexible flight modes.



eBee RTK - The survey-grade mapping drone

Capture aerial photography to produce orthomosaics & 3D models with absolute accuracy of down to 3 cm - without Ground Control Points. Now with new RGB, RE & NIR camera options.

**Visit us at Intergeo 2015,
Stuttgart, booth F8.017.**

senseFly Ltd.

Tel: +41 21 552 04 40
e-mail: info@sensefly.com
www.senseFly.com



Every surveying project is unique. Working in an open pit mine for example presents many natural geological obstacles which affect your positioning results. Plus, it is dangerous for your team to venture too close to cliff edges without proper safety equipment.

Gain time and minimise risk to your team by using Septentrio's AsteRx-m UAS board in combination with your UAV to conduct your survey from the air! Providing RTK accuracy without real time datalink at the lowest power on the market (600mW), Septentrio's AsteRx-m UAS board integrates with standard UAV connections and has on-board logging.

The AsteRx-m UAS delivers consistent, reliable and accurate GNSS positioning just like all Septentrio products. Developed over many years by our expert team, these attributes enable you never to be a centimetre out whether in the narrowest city streets, against cliff faces or in areas of difficult ionospheric conditions.

Septentrio

Greenhill Campus
Interleuvenlaan 15G
3001 Leuven,
Belgium
Tel: +32 16 30 08 00
Twitter: @Septentrio



Trimble's GNSS OEM Group, part of the Integrated Technologies division, offers the latest centimeter-level positioning technology to system integrators. GPS/GNSS receivers are designed to allow easy incorporation into specialized or custom hardware solutions. GPS/GNSS receiver modules harness the widest range of GPS L1/L2/L5 and GLONASS L1/L2 signals in easy-to-integrate modules that provides fast RTK initialization with proven low-elevation tracking. Decimeter positioning with OmniSTAR XP/HP support is also available.

Trimble's OEM GNSS receivers combine technology from Trimble and Ashtech to form a powerful portfolio that includes the receiver boards as well as rugged enclosures. The products are designed for easy integration and rugged dependability. All software features are password-upgradeable, allowing functionality to be upgraded as your requirements change. Industry professionals trust Trimble embedded positioning technologies as the core of their precision applications.

Intergeo Booth, Hall 8, C8.047



Trimble

GNSS OEM Group
510 DeGuigne Drive
Sunnyvale, CA 94085
Tel: +1.408.481.8070
e-mail: info-intech@trimble.com
InTech.trimble.com



Trimble offers geospatial solutions that facilitate a high-quality, productive workflow and information exchange, driving value for our global and diverse customer base.

Our innovative technologies feature integrated sensors, field applications, real-time communications, field-to-office processing, and software for modeling and data analytics – ensuring organizations capture the most accurate spatial data to transform it into intelligence and deliver increased productivity and improved decision making.

Whether it's more efficient use of natural resources or extending the life of our civil infrastructure, reliable information is at the core of Trimble's solutions, to transform the way work is done.

It's Time to Do More: We've added several enhancements to our Geospatial solutions portfolio with changes to our GNSS, total station, scanning, imaging, Unmanned Aircraft Systems, field software, office software, and cloud solutions, giving you more tools and capabilities that make it faster and easier for you to do your job.

Visit us: INTERGEO 2015, Hall 8, Stand No: E8.047

Trimble Navigation Limited

e-mail: geospatial@trimble.com
www.trimble.com/intergeo2015

WIRELESS INFRASTRUCTURE

21



Trimble's Wireless Infrastructure Group, part of the Integrated Technologies division, is a market leader in providing intelligent, robust industrial communications. We are dedicated to providing a wide range of wireless solutions to address the complex connectivity needs on large and small work sites. This range of products serve a broad cross section of major markets with scalable solutions.

Wireless Infrastructure products, provide point-to-point and point-to-multipoint links that are easy to configure and deploy and are designed for high performance and maximum productivity. By moving away from cellular-centric backhaul methods to more complex multi-mode communication platforms, customers products will be able to leverage additional wireless throughput payloads to the internet. Products are housed in rugged, waterproof enclosures that withstand the harshest environmental conditions. Some products are also available in board-level formats form for system integrators.

Trimble

Wireless Infrastructure Group
510 DeGuigne Drive
Sunnyvale, CA 94085
Tel: +1.408.481.8070
e-mail: info-wireless@trimble.com
InTech.trimble.com

YOTTA

22



Yotta provides a complete range of software and services to help local authorities, national agencies and utility companies manage and make more informed decisions about their infrastructure assets. From collecting data, providing software or advice, we aim to understand our clients' needs and provide the right tools for the job.

From SCANNER through to visual surveys, we provide robust data that can be relied upon when making important maintenance decisions.

Accredited to the latest UKPMS standards, Yotta offers a standalone MARCHpms system, which is developed to ensure clients deliver the best value from their Pavement Condition data.

We offer an integrated Mayrise software solution that comprises of Street Works & Permits, Street Lighting, Highways and Waste Management, including back office, mobile and web solutions that assist with operational decisions.

Yotta's Horizons Visualised Asset Management software takes data and turns it into effective knowledge. The whole-life approach allows all types of data to be integrated, visualised and utilised in analysis, letting clients harness what was once disparate data and apply it to inform strategic decisions.

Find out more at www.yotta.co.uk

COMPANY SHOWCASES 2016

NEXT AVAILABLE EDITION:

SPRING 2016

PUBLISHED MARCH

BOTH ONLINE & PRINT

The March 2016 Showcase will highlight many more new products and services available from UK, Europe, the Middle East, Africa, North America and Asia. It will give readers an insight into the companies operating in these vibrant areas, their innovations and technologies.

Entry Deadline: January 2016