

Building on BIM



“Building on the success of the BIM Level 2 programme, Digital Built Britain was launched last year and will enable the interconnected digital design of different elements in a built environment, and will extend BIM into the operation of assets over their lifetimes – where the lion’s share of cost arises.

“It will support the accelerated delivery of smart cities, services and grids. Owners and operators will be able to better manage assets and services as they track their real-time efficiency, maximising utilisation and minimising energy use.”

So says Mark Bew, Chair of the HM Government BIM Task Group - Digital Built

Britain, in the latest *National BIM Report* from NBS, an arm of the Royal Institute of British Architects that offers specialist knowledge and tools to construction industry professionals.

Even so, the Report concedes that a lack of take-up by clients and a failure of government to enforce it are holding back BIM from reaping its full rewards,

This mixed picture is echoed by Anne Kemp of the UK BIM alliance on page 54 of this issue, who points to a shortage of skills and people, coupled with differences in technical speak, in software, and in standards, as major challenges.

At the technical level, new automated modelling tools such as those described by Mark Senior on page 52 are already helping users achieve BIM compliance and avoid costly design clashes. “When contractors see savings, efficiencies and the reduced risk during the build, technology such as this becomes an integral part of the construction process,” he says, but adds a sensible rider. “It is imperative to start small, maybe on one trade or part of the build, as there is nothing like success to promote adoption.”

1. <https://www.thenbs.com/knowledge/nbs-national-bim-report-2017>

NEWS EXTRA

Government gives go ahead for Geospatial Apprenticeships

The Secretary of State for Education, Damien Hinds, has given final approval for a Geospatial Technician Apprenticeship by approving the funding band, meaning that this is now ready for delivery. The Institute for Apprenticeships has also recommended a final funding band to the Secretary of State for the Geospatial Mapping and Science Degree Apprenticeship. The Survey Association (TSA) funded the apprenticeship development work, assisted and guided by Apprenticeship Consultant, Christina Hirst. Both apprenticeships were approved in September 2017 by the Institute for Apprenticeships and the employers who developed these have been awaiting these funding band approvals before delivery can start - now agreed at £9,000 for the Geospatial Technician Apprenticeship and £27,000 for the Geospatial Mapping and Science Degree Apprenticeship. www.tsa-uk.org.uk



Gatwick to trial autonomous vehicles

Gatwick’s 300 airside vehicles are stationary 90% of the time but a trial of electric-powered autonomous vehicles will soon see workers shuttled between popular locations on the airfield when it starts this summer. The trial is thought to be the first of its kind for any airport in the world and - if successful and scaled up – could lead to airfield transport needs being met from a much smaller pool of autonomous vehicles, reducing the need for such large vehicle fleets, reducing emissions and saving on costs. The trial will be run in partnership with Oxbotica – a company that develops software that enables vehicles to run autonomously without reliance on GPS or any other technology outside the vehicle. www.gatwickairport.com

Bluesky National Tree Map Helps Tamworth Council Bloom

3D tree map data is being used to help protect trees and plan new planting schemes. A unique countrywide map detailing the location, height and canopy cover of tree locations is helping the UK’s Tamworth Borough Council protect important amenity trees in the borough. Tamworth is an eight time gold winner of national Heart of England in Bloom competition and the Bluesky National Tree Map is helping the Council identify, manage and protect trees, including those subject to Tree Preservation Orders and other planning constraints. The tree map data is accessed via the authority’s GIS and is available to all staff via its Web Mapping Service (WMS). Bluesky National Tree Map data offers better protection for the most important trees in the Borough and inform future planting plans. www.bluesky-world.com



Discover more with new Ordnance Survey GPS Devices

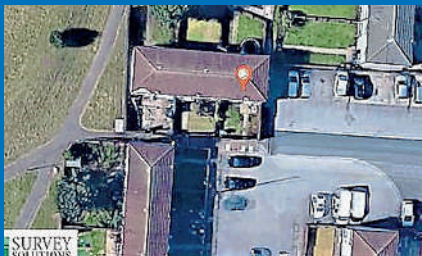
Ordnance Survey announced the launch of four new off-road OS GPS navigation devices for walking, hiking and off-road cycling. They boast the trusted accuracy that you would expect from Ordnance Survey, combined with advanced performance features. Durable and water resistant, the devices come with features that track performance and have the added inbuilt safety tracking option “SeeMe”. Unique to these devices, SeeMe allows you and your specified contacts to know exactly where you are without the need of connecting to a separate mobile phone. The devices can also be synchronised with other services and add-ons (including OS’s multi-award-winning OS Maps app) to plot and share routes, or monitor heart rate, energy and speed. www.os.uk

Tracking technology leads to Police arrests and recovery of a stolen total station

Survey Solutions reports that following the roadside theft of one of its total stations, Police were able to recover the instrument within 2 hours and make several arrests. The stolen instrument was a **Trimble S5 Total Station** supplied by UK Trimble distributor **KOREC** and one of several recently purchased by Survey Solutions. All of these instruments came equipped with **Trimble's Locate 2 Protect** tracking technology which allows logged-in users to see their position at any time. The theft happened whilst an engineering surveyor was completing a topographical survey in the Midlands only a few miles from a

Survey Solutions regional office. The tracking software not only managed to identify the street where the instrument was located but also pinpointed the actual house.

www.survey-solutions.co.uk



thinkWhere Moves to Tech Scaleup Incubator CodeBase Stirling

thinkWhere has moved to new hi-tech headquarters in Stirling, Scotland. The move sees the geographic information and mapping specialist join Codebase, Europe's largest growing tech community, at the newly opened Stirling facility in the city's Digital District. Stirling has recently been ranked the best city in Scotland in which to start a new business with a focus on global connectivity and competitive costs. thinkWhere is an innovator in Geographic Information Systems (GIS) having developed one of the first cloud-based platforms for Open Source GIS. The company has gone from strength to strength over the last 3 years and is proud work with prestigious organisations including the British Library, Scottish Government, Balfour Beatty, Registers of Scotland and humanitarian charities in the US and Cambodia. www.thinkwhere.com

Sharps Bedrooms Optimises Transport Routes and Schedules with Maxoptra

Since introducing a new technology to automate the routing and scheduling of its delivery fleet, **Sharps Bedrooms** has realised around 600 man hour savings and significantly reduced the need for third party transport contractors. The map based **Maxoptra** software, which is used online by a centralised team supporting 400 Sharps installers nationwide, is also helping to boost customer service. Armed

with optimised routes, Sharps drivers are more efficient and productive and real time traffic alerts help keep them on schedule whilst on the road. Customers are kept informed with automated ETA notifications, which has in turn resulted in a drop in the number of calls requesting updates, and installer time is better utilised as they are not having to wait around for deliveries to arrive. www.maxoptra.com



Bedford Boosts Transport Efficiency with QRoutes

Bedford Borough Council has employed the latest route planning software from **QRoutes** to optimise the council's transport services. With transformation of Bedford's schools from a three-tier to a two-tier structure, policy changes meant that the council's home to school transport network had to be reorganised. QRoutes route planning software was used to assess the most efficient routes and maximise vehicle utilisation. The re-structured services are saving the council over £200,000 a year in transport costs. Bedford uses QRoutes, which is provided as an easy to use cloud-based service, to plan transport for 3000 school children, as

well as 700 special educational needs and 1000 social care users. Bedford has now been able to reduce the number of routes, removing eight large buses from the network due to improved vehicle utilisation. www.qroutes.co.uk



Restore's Driver Behaviour Improvements With Ctrack Vehicle Tracking

Restore Document Management is using vehicle tracking to target improved road safety, reduced environmental impact and enhanced duty of care as part of a recently-launched driver behaviour initiative. As a result, the company has awarded a three-year contract extension to Ctrack for the provision of an advanced telematics solution across its 185-strong van and HGV fleet. Restore has been working with Ctrack since 2010. The company adopted the web-based Ctrack Online system to gain added visibility of its fleet, which is responsible for transporting sensitive documents on behalf of more than 20,000 business customers. Restore's fleet team is now looking to take advantage of the vehicle tracking solution's sophisticated monitoring and reporting functionality to achieve major gains in driver performance. www.ctrack.co.uk