

TRAINING DAYS

LATEST EDUCATIONAL INFORMATION ON TRAINING COURSES, DISTANCE LEARNING, COMPANY TRAINING DAYS, SEMINARS, AND WORKSHOPS CURRENTLY AVAILABLE. THIS SECTION WILL ALSO INCLUDE COMPETITIONS, AND STUDENT OFFERS AMONG OTHER EXCITING OPPORTUNITIES

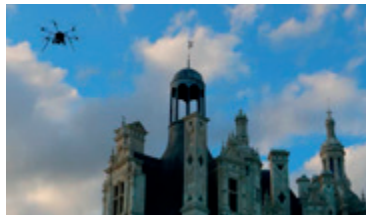
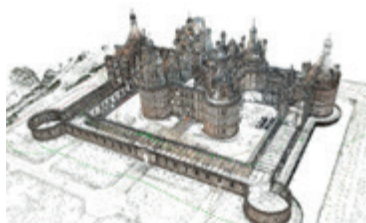
KSLS learning portal

The Kansas Society of Land Surveyors (KSLS) has announced a plan to provide quality, relevant and media-rich online continuing education not only to its members but all those who are working in surveying in Kansas, US. The portal is immediately available on the KSLS website by clicking on GeoLearn under the Education tab.

The KSLS online learning portal will carry over 65 one-hour long video-rich courses from GeoLearn. However, several Kansas-specific courses are now in the planning stage.

For more information, visit the KSLS web site at www.ksls.com

DIGITAL PHOTOGRAMMETRY AND 3D PERCEPTION: THE NEW CONQUESTS



To review the progress and limits of digital photogrammetry and 3D perception, the French Society for Photogrammetry and Remote Sensing is organising a conference entitled 'The new conquests'. This event aims to bring together professionals in photogrammetry, 3D perception and their applications.

Parallel to the conference are an industrial exhibition and tutorials on open source software used in photogrammetry, including Cloud Compare, Micmac and RTKLib.

The conference will take place at the Ecole Nationale des Sciences Géographiques in Marne-la-Vallée, France, on 16-17 March 2016, with the tutorials taking place on 15 March 2016.

For more information, visit www.sfpt.fr

DISTANCE LEARNING GIS PROGRAMMES

UNIGIS UK

Study for a postgraduate qualification in GIS by online distance learning

UNIGIS UK has been at the forefront of GIS education for over 20 years, providing online distance learning-based postgraduate education and training in Geographical Information Systems and Science. Our part-time programmes support the personal and career development of GI professionals and those seeking to enter the GI industry. We support you with personal tutors, online resources and web collaboration software for surgeries and tutorials. There are no examinations, our courses are delivered through our bespoke VLE, and are 100% coursework assessed.

"The material covered in this course is relevant and up to date. I landed the GIS job I always wished for only 2 months after completing the UNIGIS programme".

MSc GIS Student 2013

unigis@mmu.ac.uk
+44 (0) 161 247 1581

- part-time online, distance learning
- flexible entry requirements
- one year for the PgC, two years for the PgD, and three years to complete the Masters
- specialist pathways in GIS, Applied GIS, and GI Technologies
- degrees awarded either by Manchester Metropolitan University or the University of Salford
- recognition by the UK Association for Geographical Information (AGI) for continuing professional development
- annual intake in September
- competitive fees with instalment options
- key textbook and industry standard software included

Educating GIS Professionals Worldwide



www.unigis.org