

BENTLEY ANNOUNCES ACQUISITION OF C3GLOBAL

Bentley Systems has acquired U.K.-based C3global, provider of web-based Amulet software for operational analytics.

Bentley's AssetWise platform can now deliver additional actionable insights as asset performance management is extended, through AssetWise Amulet. AssetWise Amulet offers unique value in applying predictive and prescriptive analytics that are easily configurable at industrial scale to leverage just-in-time data for improved operational efficiencies. Among the many infrastructure owner-operators benefiting from Amulet operational analytics are water utilities, oil and gas, and power transmission grids. Bentley Systems CEO Greg Bentley said, "Our acquisition of Amulet enables another cumulative BIM advancement – beyond leveraging design modeling, construction modeling, and reality modeling – for enhancing infrastructure asset performance." David Smith CEO of C3global said, "All of us at C3global look forward to working side by side with our new colleagues at Bentley to further advance just-in-time data analysis for improved decision making and, ultimately, enhanced asset performance and owner-operator value." www.bentley.com/AssetWiseAmulet.

NEW MOBILE GIS AND GEO SOLUTION THAT WORKS WITHOUT NETWORK CONNECTIVITY

Nutiteq has launched an offline maps service with new mobile multi-platform SDK for GIS and GEO application developers. Nutiteq Maps 3.0, a new generation for advanced mobile map visualization tools on mobile platforms, has a unique feature set, to allow customization flexibility as their SDK (Software Development Kit), usage of Open Standards and enables building professional GIS and GEO applications for Android, iPhone, iPad, Windows Phone, wearables and other device platforms. Nutiteq Maps SDK is used for enterprise and professional solutions with custom base data, within corporate firewalls and in private clouds. Bringing professional GIS and GEO features into wider variety of mobile platforms makes it possible to build handheld devices for various user segments and helps to offer user-friendly and innovative solutions at currently one platform dominant world. www.nutiteq.com



GLOBALSTAR'S SPOT DELIVERS PEACE OF MIND FOR OUTDOOR ENTHUSIASTS

SPOT products from Globalstar Europe Satellite Services Ltd. have been used to initiate over 600 rescues globally in 2014. With hundreds of thousands of SPOT units in service, SPOT delivers affordable and reliable connectivity and real-time GPS tracking, providing reassurance when there is unreliable or no mobile coverage. David and Jayne Turner of Birmingham UK, set off around the world in a reconditioned Land Rover,

dubbed Lizzybus. Their 134,000-mile odyssey lasted five years and took in 66 countries on six continents. They chose a SPOT device to keep in touch with family in the UK and let them know they were safe. SPOT continues to innovate with products and services that deliver peace of mind, reliable connectivity and accurate GPS tracking solutions that are relevant to millions of users around the world. www.globalstar.com

THINKGEO UPDATES MAP SUITE GIS EDITOR

ThinkGeo has updated their Map Suite GIS Editor application, designed for Geographic Information System professionals. The upgrade includes a number of new features, bug fixes, and stability improvements. This is a major product update and the most significant update since the product was first released. The latest release includes the latest Map Suite World Map Kit Online base-map which now is based on OpenStreetMap data and includes world-wide street level coverage,

improved map rendering and frequent map updates. In addition to the basemaps the new release also includes support for new file types including parcel data, GPS, NOAA weather, and many more. Map Suite developers can now also utilize the GIS Editor to render their maps using the easy to use interface save it as a layer then loading the saved layer into Map Suite. This saves time by using a UI instead of having to write tedious rendering code. www.thinkgeo.com

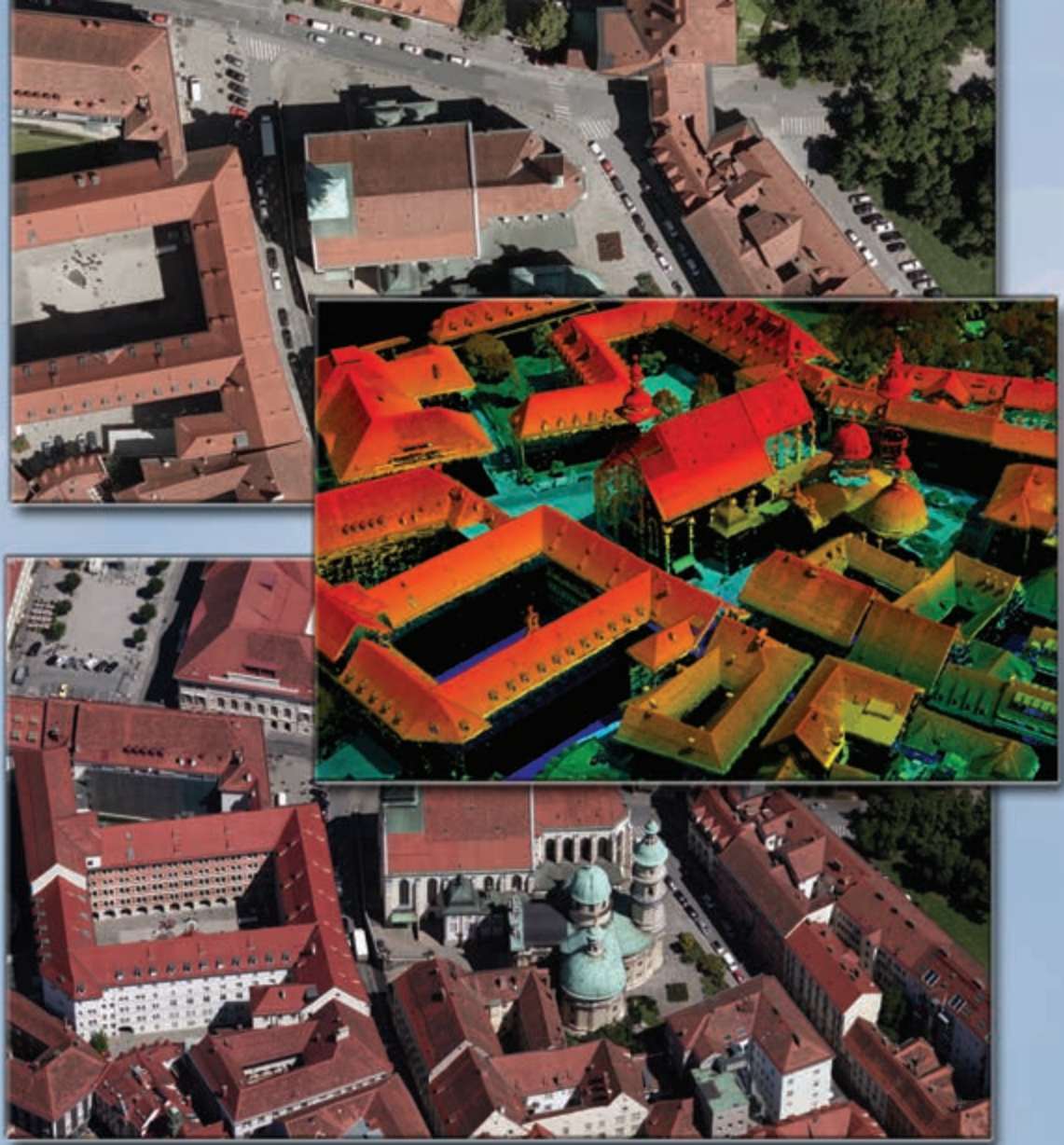
EXPRODAT'S SOFTWARE PUTS ARCGIS AT THE HEART OF UNCONVENTIONALS

Exprodat has released a new version of its Unconventionals Analyst, the ArcGIS extension that allows oil and gas companies to estimate reserves and optimise well patterns throughout the life of an unconventional oil and gas development. Unconventionals Analyst version 221, which supports the latest ArcGIS 10.3 release, includes enhanced support for the Society of Petroleum Evaluation Engineers' (SPEE) Monograph 3 geostatistical reserves analysis which was designed to determine the undeveloped areas in resource plays that could be considered to have been proved. The new features mean that users of Unconventionals Analyst v221 can now run multiple iterations of the complex Mono-



graph 3 workflow, easily create proved area polygons, repeat runs using the same anchor wells as a previous calculation and create a final heat map view of overlap areas. <http://www.exprodat.com/Software/TGUA/>

We have you covered



from all angles.

Need a large format camera system for low-altitude, corridor missions? High-altitude ortho collections? Something in between?

Need to be able to collect oblique imagery? How about oblique and nadir imagery in panchromatic, color and near-infrared all in the same pass?

Need a software system that will allow you to take that aerial imagery and create point clouds in LAS format, digital surface models, and orthomosaics? **No problem.**

The UltraCam series of large format photogrammetric digital aerial sensors includes systems of varying image footprints and focal lengths. Whether you need multi-spectral nadir imagery or obliques—or both from the same camera—we have a system for you.

Meanwhile, our highly automated UltraMap photogrammetric workflow software enables you to process UltraCam data to Level 3, radiometrically corrected and color-balanced imagery, high-density point clouds, DSMs, DSMorthos and DTMorthos.

We've got you covered.



iFlyUltraCam.com

ULTRACAM



Microsoft

HERE RAPIDLY ADVANCES CONNECTED DRIVER EXPERIENCES

HERE and BMW AG have collaborated to create connected driver experiences at the forefront of automotive technology. HERE and BMW combined car engineering with software development to develop a suite of location-based services. Experts from the two companies worked together to develop driver services, rooted in highly precise and dynamic location information. The BMW "Intelligent Drive", uses sophisticated capabilities of the HERE location cloud to personalize in-vehicle technology, including; smart recommendations for parking and fuel, sharing destination and estimated time of arrival, and safety alerts for hazards, speed restrictions and traffic. A HERE companion app running on iOS and Android will help drivers find their parked car, and their favorite destinations will already be waiting for them in their in-car navigation system when they arrive. Other app features such as pedestrian navigation and local search will help drivers reach their final destination after they park the car. <http://360.here.com>

SPATIALTEQ RELEASES MAPBUSINESSONLINE.COM 4.4

Map Publisher SpatialTEQ Inc. has announced the release of MapBusinessOnline.com 4.4 business mapping software for sales, marketing and territory planning professionals. With MapBusinessOnline.com 4.4 MBO users will be able to overlay vector layers of cities and roads on top of sales territory maps, demographic maps or business planning maps. In addition, 4.4 provides a series of enhanced account management tools controlling the set-up of map editing teams, groups of annual subscribers interested in sharing map editing capabilities. **City and road vector layers** are new optional vector layers that provide accurate, labeled line and point layers to be used as overlays on user maps. **Team Account Management** enables easier purchasing and upgrading options so that businesses can easily move users into and out of team editing groups. **Sales Territory Planning** enables the addition and views of demographic values by territory with easy creation of territory workflows. www.MapBusinessOnline.com



AVANTE MARITIME SCHOOL EXPANDS ITS VSTEP SIMULATOR CAPACITY

Following the successful installation of a VSTEP desktop trainer classroom last year, the Avante Escuela de la Marina Mercante in Colombia has now purchased a Class A Full Mission Bridge Simulator to further expand its simulator training capacity. The follow-up order for an additional VSTEP NAUTIS Class A Full Mission Bridge simulator was placed following the delivery of a desktop trainer classroom at the Avante Maritime School, and also the

overwhelmingly positive feedback by students and instructors about the ease of use and high quality training possibilities of the desktop trainers. The NAUTIS Class A Full Mission Bridge simulator will be installed by VSTEP at the Avante Headquarters in Bogota. The Avante instructors will receive in-depth train-the-trainer courses from the VSTEP engineers to familiarize themselves with operation of the simulator. www.vstepsimulation.com

ENHANCEMENTS TO MAPTITUDE 2015

Maptitude 2015, provides the most up-to-date and accurate maps and demographics available, encompassing the latest streets, postal codes, business locations, census data, and more. Maptitude 2015 improves upon a number of areas of the software. One of the key areas focused on is significant enhancement of reporting capabilities. The improvements to the latest edition of Maptitude will make it even easier to present and share the results of analysis in concise and informative formats. Maptitude now sup-

ports completely new ways to share your data including single click exports to Microsoft Excel, cutting-edge charts, and PDF reports. The reporting tools have been redesigned to be much more intuitive, and to allow for report personalization. 2-D and 3-D charts can be created to perform multi-dimensional data analysis and reporting. The latest data standards and file formats are supported with new import capabilities for Google Maps, Microsoft MapPoint, and Excel. www.caliper.com

SAFE SOFTWARE RELEASES FME 2015



Safe Software has announced that the latest version of its core technology, FME 2015, is now available in both FME Desktop and FME Server. Developments aim to help users easily move their data where it needs to be and keep

up with technology that is constantly evolving, not only with tools that enable them to use more data in more ways, but with enhanced usability features that allow them to work with FME more efficiently and focus on getting the most from their data. FME Desktop 2015 includes changes to FME Workbench that have created a more convenient workflow authoring environment with new functionality, features, and canvas enhancements. The latest version of FME Server has made changes aimed at extending its capabilities to a wider audience including a revamped web interface that is more approachable, enabling users of all technical skill levels to automate data transformation workflows. www.safe.com



NEW PRODUCTION PLANT FOR PBS AND PBSE DETECTORS

Laser Components has announced the significant expansion of their R&D and production capabilities expanding the range of IR components. Located in Phoenix, Arizona, Laser Components Detector Group has opened a development division and production plant for PbS and PbSe detectors; showing that LASER COMPONENTS continues to establish itself as a world leading manufacturer of IR products. **Patrick Paul, General Manager of the group** explains: "Since its founding in

1982, Laser Components (LC) has specialised in IR components. Its collective know-how is extensive. Customers now profit from our in-house production facilities worldwide. As we offer IR detectors that implement different technologies, it is possible for our customers to always find their ideal solution." Following preliminary testing by selected customers the PbS/PbSe detector's performance has been approved, with production starting immediately. www.lasercomponents.com

SOUTH TYROLEAN TETRA NETWORK FOR CIVIL PROTECTION ORGANISATIONS TO BE EXPANDED

The **Office for Civil Protection in South Tyrol** has awarded **Airbus Defence and Space** and its Austrian partner company **Center Communications Systems** an extension contract for the **Tetra radio communication network** in South Tyrol, Italy. The conclusion of this second-phase contract was achieved only one year after signing the first contract. The Tetra network will replace over 40 analogue communications systems currently used by the civil protection organisations. Thanks to the extension the whole province will be covered by secure digital radio communications. The implementation of a new training system will support the introduction of the Tetra technology and the new devices to the



end users, who now use over 50 analogue systems. The contract includes an extension of the radio coverage by 47 sites up to a total of 102 sites using the advanced Tetra TB3 base station. www.airbusdefenceandspace.com

PIX4DMAPPER VERSION 1.3 NOW RELEASED

The release of **Pix4Dmapper V1.3** has been announced with many new features. Version 1.3 of Pix4Dmapper creates a full **3D textured mesh** that can be exported in **OBJ** and **PLY** format and be used for Fly-through animations. Leverage the power of **Nvidia GPUs** for faster processing. For initial processing, **GPU support** will improve processing speed from 10% to 75%, depending on image content and project size. GPU support is also used for densification and semiglobal matching. The new **Automatic Brightness and Color**

Correction feature automatically compensates for change of brightness, luminosity and color balancing of images to generate visually improved orthomosaics. **Improved DTM Extraction** offers users more control with more selection tools to manually select and delete points and by classifying points into classes. More features include project splitting for large scale mapping projects, standard camera rig support, improved point cloud editing and Fly-through animations, and more. www.pix4d.com

FUGRO TO PROVIDE SERVICES FOR FLOOD RISK DATA CONTRACT

Fugro has been awarded an indefinite delivery/indefinite quantity (ID/IQ) contract for flood risk data services by the **U.S. Department of Homeland Security's Federal Emergency Management Agency (FEMA)**. The **Compass PTS** joint venture, led by **AECOM Technology Corporation** and **CDM Smith**, unites partners **Fugro**, **T&M Associates**, **Half Associates**, and **ABSG Consulting**. It will provide architectural and engineering support services to continue FEMA's goals to reduce risk to life and property by increasing public awareness. Fugro will deliver integrated LiDAR-derived solutions and traditional and oblique imagery solutions as well as visualization software. The geospatial knowledge will aid in critical flood management services to support FEMA's Risk Mapping, Assessment and Planning (Risk MAP), Hazard Mitigation Technical Assistance Program (HMTAP) and Technical Assistance and Research Contracts (TARC) programs. "Fugro is proud to work with its Compass joint venture partners to support FEMA's critical mission activities," said **Fugro Geospatial President, Brian Wegner**. www.fugro.com

OGC REQUESTS COMMENT ON LANDINFRA CONCEPTUAL MODEL

The **Open Geospatial Consortium (OGC)** membership has issued a **Request for Comments** on the **OGC LandInfra Conceptual Model**. This document communicates the proposed intent and content of a new candidate OGC standard to be called the **OGC InfraGML Encoding Standard**. The UML conceptual model establishes a single set of consistent concepts that could be implemented in GML (as InfraGML) or in other encoding mechanisms. After reviewing the existing **LandXML** format, the **OGC Land and Infrastructure Domain Working Group (LandInfraDWG)** decided that a fresh start standard was warranted. The new standard would have a use case driven subset of LandXML functionality, but it would be consistent with the OGC standards baseline, implemented with the OGC Geography Markup Language (GML), and supported by a Unified Model Language (UML) conceptual model. www.opengeospatial.org

2015 URISA VANGUARD CABINET ANNOUNCED

URISA is pleased to announce the 2015 members of its **Vanguard Cabinet**. The Vanguard Cabinet (VC) is a URISA initiative to engage young GIS practitioners to increase their numbers in the organization, and better understand the concerns facing these future leaders of the GIS community. The Cabinet's mission is to collaborate with URISA's Board of Directors and Committees in creating and promoting programs and policies of benefit to young professionals. The **New 2015-2016 URISA Vanguard Cabinet Members** are: **Daniel Behnke**, GISP - Data Transfer Solutions, Orlando, Florida, **Yuriy Czoli** - Development Seed, Toronto, Ontario Canada, **Derreck Deason** - WhoData.org, New Orleans, Louisiana, **Carey-Lee Dixon** - National Spatial Data Management Division, Kingston, Jamaica, **Damian Graham**, GISP - GE Capital, Chicago, Illinois, **Kitty Hurley**, GISP - State of Minnesota, Saint Paul, Minnesota. Each member serves a two-year term. Meet each member and learn more about VC activities here: <http://www.urisa.org/about-us/vanguard-cabinet/>

MDA ANNOUNCES STRATEGIC PARTNERSHIP WITH PCI GEOMATICS

MDA's Information Systems Group (MDA), has announced a strategic partnership with a world-leading developer of software and systems for remote sensing, imagery processing, and photogrammetry, **PCI Geomatics (PCI)**. The partnership introduces a solution that streamlines access to **synthetic aperture radar (SAR)** imagery for **Geomatica 2014** users. A key benefit of this partnership provides **Geomatica** users with direct access to **MDA's SAR** experts who have decades of expertise in radar remote sensing analysis. The solution provides access to **RADARSAT-2** order handling services through both the PCI Geomatica website, and PCI Geomatica, a state-of-the-art desktop software package for processing Earth observation data that allows users to load satellite and aerial imagery where advanced analysis can be performed. **MDA** is a primary source of geospatial solutions for the Oil and Gas, Defence and Security, Disaster Management, Aviation, Natural Resources, Agriculture, and Mining markets. www.mdacorporation.com
www.pcigeomatrics.com



COMBAT ELEPHANT POACHING IN AFRICA WITH GEOSPATIAL ANALYSIS

A new report published by **DigitalGlobe Inc., African Parks, Enough Project** and the **Satellite Sentinel Project** details how the use of satellite imagery and predictive analytics is helping park rangers combat illegal elephant poaching in the **Democratic Republic of Congo's Garamba National Park**. The African elephant population has declined by more than 50 percent in the past 30 years, and poachers are killing the elephants of Garamba at an unprecedented pace. Working with the

Enough Project and African Parks, DigitalGlobe analysts were given the location and date of the elephant remains discovered between 2011 and 2013. Using this data, analysts conducted historical geospatial trend analysis, cost surface travel analysis, key terrain analysis, and predictive analysis using DigitalGlobe's Signature Analyst™ geospatial analytic software. This data is being used to focus scarce patrol resources and establish checkpoints at key access points to poaching hot spots. www.digitalglobe.com

MAIDEN FLIGHT OF THE DA50-JP7 WITH TURBINE

A **DA50** powered by a turbine engine made its first flight on 19 January 2015 in Wiener Neustadt, Austria with **Christian Dries, CEO Diamond Aircraft**, as test pilot, along with **Ingmar Mayerbuch, Head of Flight Test**. This concept was first introduced at general aviation show AERO Friedrichshafen in April 2013. After the flight Christian Dries says: "This aircraft with this turbine engine almost flies like a rocket." The single turboprop with room for up to seven passengers bears the name **DA50-JP7 (JP for Jet Prop)**. The airplane will be manufactured in two different versions. The Tundra variant with big wheels and rugged landing gear is perfect for uneven strips and



rough terrain. The second version is targeting training and private customers requiring high performance. The **DA50-JP7** is perfectly suited for aerial photographic operations in harsh climates with temperatures ranging from minus 50°C to plus 50°C. www.diamond-air.at

LAUNCH OF THE "RACE FOR WATER ODYSSEY" EXPEDITION



The "**Race for Water Odyssey**" expedition is a race against time to protect oceans from plastic pollution. Initiated by the **Race for Water Foundation** based in Lausanne, Switzerland. The objective of this unique expedition is to conduct the first global assessment of plastic pollution in oceans by visiting island beaches situated in the 5 trash vortexes using advanced

technology including **senseFly** drones. It is estimated that over 260 billion tons of plastic are currently polluting the oceans. This waste accumulates inside immense whirlpools of water created by marine currents; gigantic heaps of debris called trash "gyres" or "vortexes". There are five gyres in existence today, but only one—the North Pacific Gyre—is being actively studied. Innovative drone company senseFly has donated eBee drones to capture high-resolution aerial photos of plastic debris, with a view to advancing scientific research in this domain. www.sensefly.com

ALGIZ 10X

EXTREME FIELD PERFORMANCE



The popular Algiz 10X rugged tablet just got better! Laughing off the roughest weather and harshest handling, it is a perfect match for today's mobile workforce.

The Algiz 10X now comes with Windows 8 and optional LTE and boasts a quad-core processor for top-of-the-line computing capability in even the toughest environments.

handheld
www.handheldgroup.com



NEW SUAS SIROL-110 V2015 SUCCESSFUL OPERATIONAL ROLLOUT IN ATACAMA'S DESERT

The new **Sirol-110 v2015** small unmanned aerial system designed and produced by **IDETEC Unmanned System** has been successfully used during a mapping campaign in Atacama's desert. The new system achieved a series of flights in desert conditions, handling heavy winds, dust and extreme temperature conditions. "The new Sirol-110 v2015 integrates advanced features and functions, it's RTK ready, extremely transportable and capable to flight in windy conditions, being an ideal professional mapping solution to be carried in airline flights as personal baggage" says **Juan Sainz, CEO IDETEC Unmanned Systems**. A key of the new system is a new detachable tail boom that permits a compact and modular transport design and a three panel wing configuration. The ground control station is based on a Panasonic Toughbook multi-touch tablet PC. www.idetec-uas.com

AVEVA OPENS NEW OFFICE IN SAUDI ARABIA

AVEVA has announced the opening of its new office in the Middle East and further enhances its growing global network. The office will offer sales and support for all of AVEVA's solutions and services, with particular focus on Owner Operators (OOs) and Engineering, Procurement and Construction (EPCs) contractors in the very important oil & gas and power sectors. "This strategic location in Saudi Arabia positions AVEVA to add even greater value to our growing client base in the Middle East", said **Richard Longdon, CEO, AVEVA Group**. "The new office is another example of our continued investment to deliver local sales and support where our customers operate. We will be focused on helping our OO and EPC customers improve their businesses through predictable project delivery and reliable operations." www.aveva.com

ADELAIDE TRIO DELIVERING ADVANCED 3D SOLUTIONS

South Australian company **Redstack** has formed alliances with local partners **Maptek** and **Avitus UAV Systems** to deliver end to end reality capture, 3D scanning and 3D modelling solutions. These new partnerships complement Redstack's relationships with **Autodesk, Apple** and **Makerbot**, enabling Redstack to deliver end to end solutions for design, engineering and BIM professionals. **Redstack Managing Director, Michael Lachs** says "As a proud Australian company, we are very pleased to be partnering with leading Australian profession-

als in **Maptek** and **Avitus**. We are passionate about assisting Australian companies to grow and thrive in a global marketplace. Maptek and Avitus are just two of many South Australian success stories. We look forward to introducing their technologies to our clients throughout Australia and Asia Pacific." Maptek is a leading provider of 3D scanning hardware and Avitus UAV Systems offer customised aerial systems for professional aerial photography and videography. www.maptek.com www.redstack.com.au www.avitus.com.au

NOVARA GEOSOLUTIONS SIGNS INTREPID PIPELINE SOFTWARE AGREEMENT WITH KHATIB & ALAMI

Novara GeoSolutions, creator and supplier of market-leading oil & gas pipeline management software, **Intrepid®**, has signed a **Memorandum of Understanding** with **Khatib & Alami - Geospatial Systems Integration (GSI) Division**. Headquartered in Beirut and with offices throughout the Middle East and beyond, **Khatib & Alami** work on projects in diverse industries such as; oil & gas, transportation, energy and water. The agreement between the two companies will support the development of the market place for **Intrepid®** throughout the Middle East. Developed on top of the **Esri ArcGIS** platform, **Intrepid®** is a fully featured software used around the world to increase the cost



effectiveness of planning, monitoring and managing pipelines. By bringing together critical asset data into a single repository, **Intrepid®** allows managers to quickly and easily interrogate and analyse their pipeline networks. www.novargeosolutions.com

ZURICH INSURANCE GROUP IMPROVES ITS GLOBAL GEOCODING CAPABILITIES WITH PITNEY BOWES

Pitney Bowes has announced that the **Zurich Insurance Group** has extended its contract with Pitney Bowes to utilise **Pitney Bowes' Spectrum Global Geocoding** services. Over the past three years, Zurich has broadened its address level geocoding coverage from 35 to 120 countries. As such, they needed a solution that would meet their expanding global needs, collating extensive amounts of information to help understand global location-based exposures and learn how the company's accumulations will help

improve efficiencies with its reinsurance strategies. With the support of Pitney Bowes' geocoding technology, Zurich can easily maintain increased geographic accuracy of risk locations, resulting in more accurate and confident underwriting decisions and fulfilment of regulatory requirements around risk reporting. With the cloud-based Spectrum Geocoding services available across more than 200 countries, Zurich have the global coverage it needs to better understand risk across the regions it is active in. www.pb.com

ORBIT GT AND LUXCAD, LUXEMBOURG SIGN RESELLER AGREEMENT

Orbit GeoSpatial Technologies is proud to announce that **LuxCad, Luxembourg** has been appointed as **Reseller of Orbit GT Mobile Mapping** software products. "We are pleased to have signed a Reseller Agreement with LuxCad, a leading provider of GIS related solutions in Luxembourg", says **Peter Bonne, CEO of Orbit GT**. "Their excellent reputation and smart market access makes LuxCad a perfect match to Orbit GT in a growing mobile

mapping business." **Jean Wagner, CEO of LUXCAD** said, "We at LUXCAD are proud for this agreement with Orbit GeoSpatial Technologies and look forward to an excellent relationship. The Orbit range of software fits our offer to both industry and government markets. As a complement to our aerial mapping activities we are now in a position to provide the full spectrum of data and related software and services." www.orbitgt.com