

TRAINING DAYS

THE LATEST EDUCATIONAL INFORMATION ON TRAINING COURSES, DISTANCE LEARNING, COMPANY TRAINING DAYS, SEMINARS AND WORKSHOPS CURRENTLY AVAILABLE. THIS SECTION WILL ALSO INCLUDE COMPETITIONS, AND STUDENT OFFERS AMONG OTHER EXCITING OPPORTUNITIES

HEXAGON MINING'S ANNUAL GLOBAL SEMINAR SERIES

Hexagon Mining's annual seminar series will this year start in Tucson, AZ, US, on April 18-22, before moving to the following cities around the world:

- Australia (Perth, June 20-22)
- Namibia (Swakopmund, June 22-24)
- Chile (Santiago, August 8-10)
- Peru (Lima, August 10-12)
- Mexico (Hermosillo, August 15-17)
- Brazil (Belo Horizonte, TBD)

Courses will include MineSight for Short Term Planning, MineSight for Geology 3D Blocking, Designing and Managing Patterns with HxM Blast and Estimating Resources Using Basic Geostatistics.

For details of all courses and to register, visit: www.hexagonmining.com/downloads/MineQuest_Schedule_Sign_Up_2016.pdf

GLOBAL MAPPER TRAINING CLASSES

This month, Blue Marble application specialists will be conducting three days of Global Mapper training, as well as a single day covering the features and functions of the Geographic Calculator.

To be held in the Golden Nugget Hotel and Casino, Las Vegas, NV, US, the Global Mapper class will run from February 22-24, from 8am to 5pm. The first day will be an introduction to Global Mapper, day two will cover advanced data processing, while the final day will cover LiDAR, 3D modelling and terrain analysis. Users who successfully complete all three days of training will be recognised as certified Global Mapper users.

The one-day Geographic Calculator session at the same location on February 25 will cover the theory and principles of geodesy and projection management as well as the features and functions of the Geographic Calculator. This course is an essential foundation for understanding the concepts behind mapping and spatial data management and includes a detailed overview of coordinate transformation and coordinate system definitions.

Cost: A single class costs US\$498, while the three-day Global Mapper course costs only US\$996.

For more information, visit: www.bluemarblegeo.com/solutions/global_mapper_nv.php or www.bluemarblegeo.com/solutions/applied_geodesy_nv.php

DISTANCE LEARNING GIS PROGRAMMES

UNIGIS UK

Study for a postgraduate qualification in GIS by online distance learning

UNIGIS UK has been at the forefront of GIS education for over 20 years, providing online distance learning-based postgraduate education and training in Geographical Information Systems and Science. Our part-time programmes support the personal and career development of GI professionals and those seeking to enter the GI industry. We support you with personal tutors, online resources and web collaboration software for surgeries and tutorials. There are no examinations, our courses are delivered through our bespoke VLE, and are 100% coursework assessed.

"The material covered in this course is relevant and up to date. I landed the GIS job I always wished for only 2 months after completing the UNIGIS programme".

MSc GIS Student 2013

unigis@mmu.ac.uk
+44 (0) 161 247 1581

- part-time online, distance learning
- flexible entry requirements
- one year for the PgC, two years for the PgD, and three years to complete the Masters
- specialist pathways in GIS, Applied GIS, and GI Technologies
- degrees awarded either by Manchester Metropolitan University or the University of Salford
- recognition by the UK Association for Geographical Information (AGI) for continuing professional development
- annual intake in September
- competitive fees with instalment options
- key textbook and industry standard software included

Educating GIS Professionals Worldwide



www.unigis.org

TRAINING DAYS

EARLY CAREER PROFESSIONALS' WEBINAR



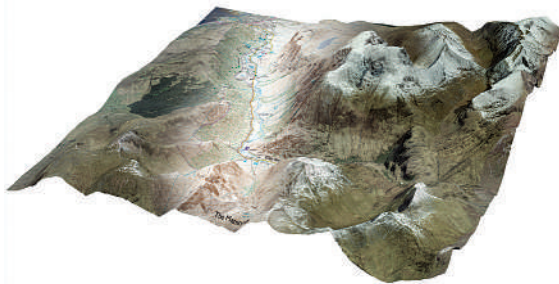
The UK's Association for Geographic Information (AGI) is holding a two-part webinar, the first part of which will be held on February 10 from 1pm to 2pm GMT and will look at cartography and cartographic design.

The webinar will cover:

- Why good cartography is important
- Cartographic design principles
- Sources of map inspiration
- Cartographic technologies
- Open source and open data: what does it mean for cartography?
- Map critique
- Tips and tricks

There will be time for questions from the audience so please feel free to submit any questions in advance of the webinar.

The hosts for the webinar are Charley Glynn and Paul Naylor, who are cartographic design consultants at the UK's national mapping agency. They specialise in the design of new products and services and the promotion of good map design.

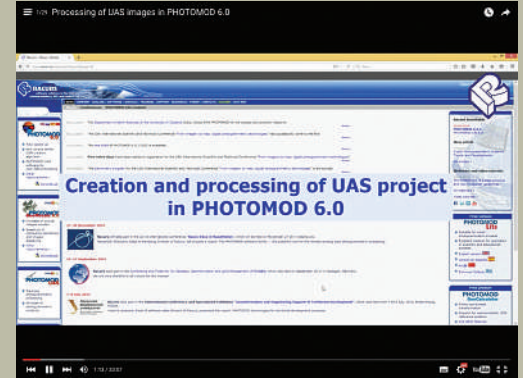


To register for the webinar, visit: www.agi.org.uk/component/civicrm/?task=civicrm/event/register&Itemid=238&id=123&reset=1

For more information about Charley Glynn and Paul Naylor, visit: <https://www.ordnancesurvey.co.uk/resources/carto-design/about-us.html>

To submit questions for the webinar, email: ecn@agi.org.uk

NEW PHOTOMOD TRAINING VIDEOS



Racurs has created a new series of training videos for Photomod 6. Videos are free to view and download from www.racurs.ru/?page=676 and cover topics including block layout creation, stereovectorization and the processing of UAS images. Videos from previous webinars created by the company are also available to download from the same URL.

1SPATIAL WEBINARS

1Spatial is holding a number of webinars this month:

- February 9, 16: 1Integrate for ArcGIS
- February 12: FME 2016 – 5 hot features you might have missed

It is also offer a two-day introductory FME training course at its Cambridge, UK offices on February 3-4.

For more information and to register for any course, visit: <http://1spatial.com/events>

ADVERTISER INDEX

| COMPANY | PAGE |
|-------------------------|-------|
| Cadcorp | 9 |
| GeoConnexion | 25/35 |
| IFEN GmbH | 11 |
| INTERGEO 2016 | 29 |
| Leica Geosystems | 5 |
| Manchester Met Uni | 42 |
| Phase One | 44 |
| Riegl | 2 |
| Sky Drone Survey | 7 |
| Trimble | 19 |
| University of Leicester | 15 |

To advertise call: Micki: +44 (0)7801 907666
or Mai: +44 (0)1223 279 151

AERIAL SURVEY SERVICES

PRE OWNED AERIAL SURVEY ITEM FOR SALE

These very good (one previous owner) items are available for quick sale.

APPLANIX POSAV 410 & 510 systems (non restricted)

VEXCEL UCX & UCXp .Vexcel LP prime few months old with warranty

TRACKER FMS system

SOMTAG GSM3000 mount & NEW PAV30 mount.

PIPER PA31 DUAL hatch aeroplane-Europe

BEECH Kingair A90 single hatch- Europe

Please email aerialsurvey@aerialsurvey.com

www.aerialsurvey.com

ADVERTISE HERE FROM ONLY £30 PER MONTH!

Contact: MickiKnight@geoconnexion.com

TRAINING/GIS COURSES

DISTANCE LEARNING GIS PROGRAMMES

UNIGIS UK

MSc/PgDip/PgCert courses in GIS by distance learning

Jointly delivered by Manchester Metropolitan University and the University of Salford

New Masters in

- GIS
- Applied GIS
- GI Technologies

Designed to meet the needs of GIS professionals and those new to the industry.

See our website for further details:

www.unigis.org

+44 (0)161 247 1581

unigis@mmu.ac.uk

Educating tomorrow's GIS professionals

English Press Releases

for German-Speaking Companies:

Call Andrea Schmitz

+49 89 53859903

as-marketing-services.com

PHASE**ONE**
A e r i a l

iXU 1000 SERIES

WITH 100 MEGAPIXEL SENSORS

Large format coverage
Medium format price and size

More coverage • More flying hours • More details

