

HERE© AND 1SPATIAL© ANNOUNCE A STRATEGIC PARTNERSHIP

HERE and 1Spatial has announced that they are teaming up to deliver high grade map content to the enterprise market. As part of a strategic partnership formed to fulfil key enterprise account requirements and market opportunities, HERE is working with 1Spatial to provide data quality and processing solutions incorporating selected high quality map data from HERE. The partnership will bring multiple benefits to clients and the market. These benefits will include the utilisation of 1Spatial's technology, which will facilitate the automated integration of HERE's data with clients' own spatial and asset based information. This will enable clients' current data holdings to be embellished quickly and easily with the high grade HERE datasets. The partnership will also allow HERE to offer a more tailored version of their data, through the use of the 1Spatial technology in an automated and repeatable process through change-only updates. www.1spatial.com
<http://360.here.com>

HEXAGON ACQUIRES SCCS, A LEADING UK SUPPLIER OF LEICA SURVEYING EQUIPMENT

Hexagon AB has announced the acquisition of **Paul MacArthur Limited ("SCCS")** – one of the UK's leading suppliers of surveying equipment to the engineering and infrastructure market and a **Leica Geosystems** distributor for over 20 years. Headquartered in Cambridge, UK, **SCCS** provides surveying solutions across the country, offering customers rent, purchase and service options. Through its strong customer relations, service capabilities and business processes, **SCCS** has become a trusted and reputable partner in the sector, helping some of the UK's major providers deliver on complex and challenging road, rail and construction projects. As the UK continues to fund major infrastructure projects with more stringent processes related to **Building Information Modelling (BIM)**, collaboration between the construction and software sectors becomes increasingly vital. **SCCS's** local market expertise and relationships coupled with Hexagon's digital technologies, will strengthen adoption of Hexagon's solutions in this area. www.hexagon.com.



ESRI UNVEILS ARCGIS EARTH TO THE WORLD

Esri has launched **ArcGIS Earth**, a free, desktop-based interactive globe that anyone can use to explore the world and work with a variety of 3D and 2D map data formats including KML. ArcGIS Earth allows users to quickly display data on the globe, sketch place marks, measure distances and areas, and add annotations to easily understand spatial information. "ArcGIS Earth is a revolutionary desktop application that offers GIS to the world," said **Jack Dangermond, Esri founder and president**. "It supports spatial

data formats and workflows that are familiar to your enterprise. It is a core component of Esri's secure, stable, and mature ArcGIS platform, and it's another tool for serving all your internal and external users through GIS." ArcGIS Earth allows users to examine interrelationships of assets in 3D, report project status, and present work to stakeholders or clients in a compelling and interactive experience.

www.esri.com/earth

RTM SIGNS AGREEMENT AS DISTRIBUTOR FOR BENTLEY

RECURSOS TÉCNICOS MADRID, S.L. (RTM) has recently signed an agreement with **Bentley Systems** in order to distribute and sell Bentley products in Spain, European Union and Latin America. **Carmen Bermejo García, International and Financial Manager**, is pleased to be able to expand their product portfolio to existing and new customers. RTM are already very experienced in the use of Bentley products and are planning to increase their staff training to ensure the Bentley products are well supported. The training will be carried out by two members of RTM who have vast experience with Bentley software. Plans are also in place to develop application based on the Bentley platform to include 3D GeoSpatial

applications for many and various industrial projects. With addition of Bentley products to their portfolio, RTM are now able to provide their customers with a complete range of products and services to meet their 3D GeoSpatial and Construction needs.

www.rtm.es



RECORD ACTIVATIONS AS 9,800 MORE CUSTOMERS RELY ON SPOT IN EUROPE IN 2015

Globalstar Europe Satellite Services Ltd. announced that 2015 was another record year for **SPOT activations in Europe**. In addition, 41 customers were rescued last year in Europe, Middle East and Africa thanks to **SPOT's SOS** functionality. This figure excludes rescues handled by VARs and other third parties. SPOT delivers affordable, location-based messaging and life-saving emergency notification technology to tens of thousands of EMEA users, completely independent of mobile phone

coverage. SPOT products make it easy to track adventurers in the wild and provide anti-theft protection for valuable assets such as boats, cars and bikes. The French and UK markets have recorded particularly high growth with 360 per cent and 74 per cent increases in activations respectively since 2013. Spain and Germany also saw very strong growth. Highlights include the take-up of the SPOT Trace tracker in the burgeoning leisure marine and automotive sectors. www.globalstar.com

Urban mapping solutions

Visit www.leica-geosystems.com/products/airborne-systems to request a demo.



Leica RealCity Airborne 3D Reality Capture

Leica RealCity is the first comprehensive solution meeting the demands of urban mapping applications. It combines state-of-the-art sensor technology with high performance 2D and 3D processing to generate geospatial base layers for smart cities.

HxGN | LIVE  **ANA** | ANAHEIM
HEXAGON'S GLOBAL NETWORK 13-16 JUN 2016

Leica Geosystems AG
www.leica-geosystems.com



© Copyright 2016 Leica Geosystems. All rights reserved.

- when it has to be **right**

LIZARDTECH INTRODUCES ENHANCED GEOEXPRESS®

LizardTech® has released **GeoExpress 9.5.1**. The company's flagship product for compressing geospatial images and **LiDAR** data into high-quality **MrSID** files now boasts a streamlined interface, faster processing and support for .pix raster files. "Last year, we introduced the ability to compress raster and LiDAR imagery to MrSID and LAZ formats," said **Robert Parker, LizardTech product owner**. "With GeoExpress 9.5.1, we're excited to introduce a beautiful new design, seamless mosaicking of LiDAR files and the added choice to compress .pix raster files to MrSID." GeoExpress 9.5.1 features include: **Intuitive User Interface** - more user-friendly while delivering top-quality compressed and manipulated images, **Seamless mosaicking of LiDAR files** - uses four times less storage space, **Faster default workflow** for existing MrSID images, **New Format Support**. Compression of PCIs standard .pix raster files to MrSID means greater flexibility. GeoExpress 9.5.1 is available in several versions to meet your imaging requirements. www.lizardtech.com.

POWERFUL SOFTWARE NOW MORE AFFORDABLE

Hexagon Mining has introduced a campaign to appeal to the aggregates and industrial minerals sector of the mining industry. Flexible and affordable licenses are central to the campaign, which broadens the appeal of Hexagon Mining solutions to thousands more mines. Industrial minerals typically represent smaller operations mining for non-metallic deposits such as granite, sand, and cement. In contrast to the economic downturn affecting much of the mining industry, construction is rebounding in many parts of the globe, buoying the industrial minerals sector. New exploration licenses and standalone solutions will make it easier for smaller operations to access **MineSight**, the powerful mine planning suite for which Hexagon Mining is known worldwide. New licenses and standalone solutions mean smaller mines can now integrate the most powerful solutions on the market into their workflow, even if they don't own a full version of MineSight. www.hexagonmining.com



FUGRO'S SEAFLOOR DRILL 2 COMPLETES CHALLENGING SITE INVESTIGATION

Fugro's Seafloor Drill 2 (SFD2) has successfully completed a challenging multi-site investigation across the **North West Shelf of Australia**, encountering variable calcareous sediments and delivering results to support a jack-up drilling campaign. The work was performed in water depths up to 112 metres and required in situ testing and sampling to a total length of 323 metres. The SFD2 proved effective in sampling some of the world's most difficult seabed sediments, from ultra-soft carbonate muds to highly weathered

limestone. Its success can be attributed to a number of factors including the flexibility provided by the proprietary wireline system, the innovative approach to mud supply and a 'hands-on' approach by the geotechnical drillers. An additional advantage was the ability to airfreight the SFD2 to Australia. This drilling technology significantly enhances Fugro's fully integrated geoscience service, from optimally scoping data acquisition, through successful execution, and then into engineering design and construction support." www.fugro.com

PTV GROUP AND TOMTOM ANNOUNCE ENHANCED PARTNERSHIP

PTV Group and **TomTom** has announced an extension to their partnership, providing TomTom's full global mapping and traffic content for use in PTV's newest **Logistics and Traffic** product suite. Mapping and traffic data have become 'big data', as its scale and dynamic nature have grown over the course of the last few years. With big data, the demand for easy-to-use visualization, simulation and optimization tools grows. PTV provides a solution to this

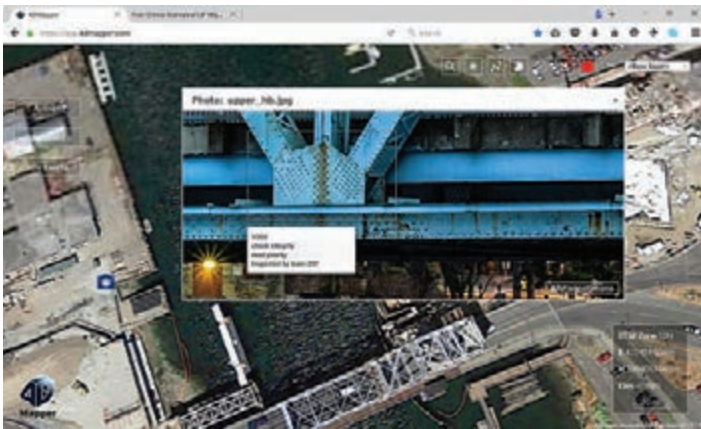
challenge, aiming to support GIS specialists and transportation professionals by bringing these teams closer together. "TomTom is excited to further enhance our already strong relationship with PTV Group. By using TomTom's vast map and traffic database, PTV Group is raising the bar when it comes to 'big data' utilization" states **Darren Cottage, VP Sales and Marketing, TomTom Geospatial and Traffic**. www.ptvgroup.com www.tomtom.com



4DMAPPER RELEASES ASSET INSPECTION DATA SUPPORT

4DMapper integrates asset inspection data from drones or other devices and manages them in a custom, browser based, 3D geospatial environment with digital terrain and imagery. Until now, asset inspection data management has been limited, with clients having to manage large volumes of photos and video without any spatial frame of reference or relation to other project data such as imagery and 3D digital models. 4Dmapper now supports streaming of geotagged and non-geotagged photos, videos and inspection

data with live annotation and collaboration. Now, inspection data can be managed spatially, in a 3D visual framework, with other data such as imagery, DTMs and GIS mapping (shapefiles). "4DMapper's asset inspection data support makes this valuable data mean something. End users receive not just a folder of photos and videos, but a logical, visual organisation of these data, streaming immediately on their browser" states **Rob Klau, Business Development Manager at 4DMapper.** <http://.4dmapper.com>

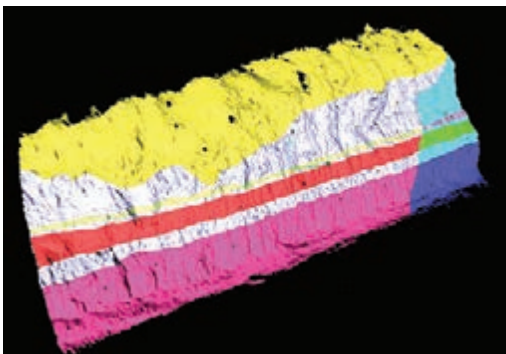


MAPTEK RELEASES I-SITE STUDIO 6 POINT CLOUD MODELLING TOOLS

The latest I-Site point cloud processing tools from Maptek focus on the everyday needs of mine surveyors for fast, accurate volumes, conformance reporting, geotechnical analysis and CAD design. I-Site Studio software offers an expanding range of applications with increasing sophistication. The new release of I-Site Studio 6 provides exciting new tools and requested enhancements. New CAD design tools include

user friendly preferences for snapping to angles and points. Other in-demand items include auto registration and alignment of scans, complex surface modelling, waviness analysis for geotechnical modelling and analysis. "I-Site Studio has matured into a powerful, fully functioned software package that does more than just process point clouds," said Jason Richards, Global Business Development Manager

for Laser Imaging Solutions at Maptek "Accurate data is crucial to a mine's success. I-Site Studio makes survey data understandable and useful for all stakeholders." www.maptek.com

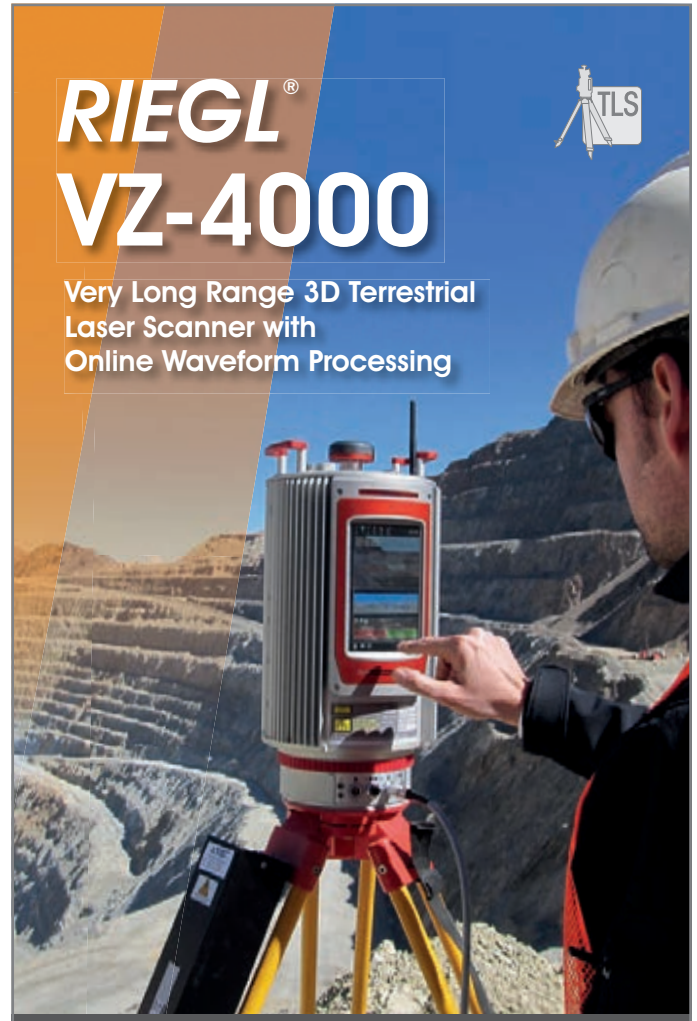


RIEGL®

VZ-4000

Very Long Range 3D Terrestrial Laser Scanner with Online Waveform Processing





RIEGL® VZ-4000

3D Terrestrial Laser Scanner

With the RIEGL VZ-4000 Laser Scanner and specifically designed software packages, RIEGL provides a perfect solution for the demanding fieldwork in open pit mining and topography.

- | up to 4,000 m range | eyesafe Laser Class 1 | accuracy 15 mm, precision 10 mm | Laser Pulse Repetition Rate up to 300 kHz (222,000 meas./sec)
- | multiple target capability | multiple-time-around (MTA) processing | full waveform export capability (optional)
- | built-in camera, on-board inclination sensors, GPS receiver and compass integrated, external GNSS receiver (optional) | stand-alone operation

Visit us and our partner  at booth 22 and get informed on the latest RIEGL developments. Noida, India | March 1-3, 2016



GEOSMART
INDIA 2016
1-3 MARCH 2016
INDIA EXPO CENTRE, BHAI WADY, GURGAON, INDIA



GEOSMART
INDIA 2016
1-3 MARCH 2016
INDIA EXPO CENTRE, BHAI WADY, GURGAON, INDIA




RIEGL LMS GmbH, Austria | RIEGL USA Inc. | RIEGL Japan Ltd. | RIEGL China Ltd.

TELEMATICS COMPANY TRANSPOCO LAUNCHES NEW SERVICE TO HELP EUROPEAN FLEETS CUT COSTS

Transport telematics company, **Transpoco**, has launched a new service designed to help Europe's car, van and truck fleets reduce fuel, maintenance and insurance costs. The new product called **SynX** is a cloud computing based service which integrates **Transpoco GPS** software with data from fuel cards to provide cost saving business intelligence. "Fleet managers are not fully exploiting GPS tracking technology, because they are too busy," commented **Andrew Fleury, CEO, Transpoco**. "While they use basic features of GPS, they never really get to the stage of accessing real business intelligence. They don't have time to analyse data from different suppliers, such as fuel, vehicle maintenance etc. The SynX product automates this analysis and pinpoints key actions that need to be taken." The expansion follows a two year major research and development programme supported by Enterprise Ireland. www.transpoco.com

AVENZA LAUNCHES PDF MAPS AFFILIATE PROGRAM

Avenza Systems Inc. is pleased to announce the launch of its affiliate program for **PDF Maps**, its market-leading consumer and enterprise mobile map app. Any retailer or business, including both online and physical stores, blogs, portals and information sites, can now earn revenue by promoting and selling maps directly to its customers using affiliate links on websites or by using signage with QR codes. Each map sale conducted in this manner will earn the affiliate a share of the revenue. The PDF Maps Affiliate program is free to join with no application or setup fees or ongoing costs. Existing PDF Maps Store vendors can opt-in to the affiliate program and earn commission in addition to their normal revenue share. Retailers and businesses interested in joining the affiliate program can sign up for free and can get in contact with the PDF Maps team at <http://www.pdf-maps.com/affiliates>. www.avenza.com.



INTEL ACQUIRES ASCENDING TECHNOLOGIES!

Intel has signed a definitive agreement to acquire the German drone developer and manufacturer **Ascending Technologies**. Intel plans for the Ascending Technologies team to continue supporting their current customers while also collaborating with **Intel's Perceptual Computing team** to develop **UAV technology** that can help drones fly with more awareness of their environments. To express its sheer excitement Ascending Technologies produced a brief drone light painting episode where the

AscTec Falcon 8 draws "happy to join" and the "Intel" logo. The patented V-form drone mounted with a LED was controlled by the flight planning software **AscTec Navigator** to perform the painting fully automated. The bright light leaves glowing trails, which form depictions according to the flown drone flight paths. Ascending Technologies had used that technique recently to produce world's first drone-driven light paintings of any real quality. www.asctec.de

NEW VERSION OF TERRAGO EDGE HELPS COMPANIES OPTIMIZE THEIR LOCATION-BASED WORKFLOWS

TerraGo has made available **TerraGo Edge 3.9**, which gives customers powerful new features to help them optimize their location-based workflows. The latest release of TerraGo Edge, available on **iOS®** and **Android®**, makes it easier than ever to assign, monitor and manage tasks for mobile personnel. "Our customers rely on TerraGo Edge's innovative workflow features and task management to help them manage workers with very different job functions, anywhere on the planet in any industry," said **Dave Basil, VP of Products and Services at TerraGo**. "We designed TerraGo Edge from the ground up so it can be customized to give our customers exactly what they need to manage their unique

operations and varying projects. They not only get the features, custom forms, maps and GPS precision they need to collect data; we give them workflow tools that help them get the job done better and faster."

www.terragotech.com



GÉANT DEPLOYS INFINERA CLOUD XPRESS WITH 100 GBE FOR DATA CENTER INTERCONNECT

Infinera announced that **GÉANT**, Europe's leading collaboration on e-infrastructure and services for research and education (R&E), and operator of the pan-European R&E network that interconnects **Europe's National Research and Education Networks (NRENs)**, has deployed the **Infinera Cloud Xpress** to extend their 100 gigabit Ethernet (GbE) network connectivity into data centers. Initial connectivity is being provided to Jisc, the UK organization for education and research digital services and solutions, which enables

the **Janet** network, and **CERN**, the **European Organization for Nuclear Research**, to deliver connectivity to their data center in Budapest. The addition of the Cloud Xpress allows GÉANT to extend GbE services seamlessly into more European data centers with hyper-scale density, operational simplicity and low power consumption. Together with its **NREN** partners, the GÉANT pan-European network connects over 50 million users at 10,000 institutions across Europe. www.infinera.com

ECHOBOAT-RCV FROM SEAFLOOR SYSTEMS SUCCESSFULLY INTEGRATED WITH NORBIT IWBMSc

Seafloor Systems has successfully integrated and tested the **Norbit iWBMSc** (Integrated Wideband Multibeam Sonar, Compact) multibeam echosounder system with the **EchoBoat-RCV** remotely controlled survey vehicle. In addition to its ultra compact form factor, the Norbit system features an **integrated INS and Sound Velocity** sensors, eliminating the need to install separate devices while greatly reducing calibration and offset measurements. The EchoBoat-RCV is Seafloor Systems' multi-payload, remotely controlled survey platform, which features portability, improved thrust, and large payload capacity. Seafloor Systems is a multidisciplinary company providing integrated solutions



for hydrographic survey equipment sales, rentals, technical support, and training. The company is manufacturer of the well known **HydroLite Survey Pole Kit, HyDrone-RCV Catamaran Survey Platform, and EchoBoat-RCV**. Seafloor Systems has built the largest multibeam echosounder rental pool in the U.S.A. www.seafloorsystems.com

W3C AND OGC PUBLISHES FIRST PUBLIC WORKING DRAFT OF ITS BEST PRACTICES

The **W3C** and **OGC Spatial Data on the Web Working Group** has published the First Public Working Draft of its **Best Practices** document for **Spatial Data on the Web**. This is a concerted attempt to bring together techniques used by the geospatial industry and Web technologists, especially those making use of Linked Data techniques. Typical use cases include environmental and cartographic data, transport and administrative data. Although

clearly a lot remains to be done, the editors seek to illustrate the full scope of the best practices. If you wish to make comments regarding this Public Working Draft, please send them to public-dwbp-comments@w3.org. All comments are welcome. The editors are particularly keen for reviewers to cite examples that may be used to further illustrate the best practices. www.opengeospatial.org.

ORDNANCE SURVEY TO MAP OMAN'S WORLD CLASS GEOSPATIAL PATH

Ordnance Survey (OS) has signed a deal with the **Sultanate of Oman Ministry of Defence** to help the **National Survey Authority (NSA)** advance its position as Oman's national mapping authority. This contribution to the development of **NSA** as a world-class national mapping authority is the start of a long-term strategically-important relationship between Oman and OS, as digital mapping and location data increasingly underpins Oman's digital economy and Government. The deal will see **OS International (OSI)** assisting Oman's NSA with the creation of a new online geospatial manual. Contributing to the **Oman National Spatial Data Infrastructure**, the manual will provide guidance to the survey and geospatial community across Oman, giving government, business and citizens the reliable, credible and authoritative geospatial information necessary for a 'smart' economy and society. The OSI delivery team will work with the NSA to update existing material and draft new content for the manual. www.os.uk

3d.luciad.com

LUCIADRIA
SITUATIONAL AWARENESS IN ANY BROWSER

Experience 3-D at
3d.luciad.com

luciad.com LUCIAD

NEW AND IMPROVED GRASS GIS 7.0.3 RELEASED

The new **GRASS GIS 7.0.3** release provides 210 stability fixes and manual improvements, compared to version 7.0.2. Of particular interest is the new **winGRASS 64 bit support**. Its graphical user interface supports the user to make complex GIS operations as simple as possible. The updated **Python interface to the C library** permits users to create new GRASS GIS-Python modules in a simple way while yet obtaining powerful and fast modules. Furthermore, the libraries were significantly improved for speed and efficiency, along with support for huge files. A lot of effort has been invested to standardize parameter and flag names. Finally, GRASS GIS 7 comes with a series of new modules to analyse raster and vector data, along with a full temporal framework. First time users may explore the first steps tutorial after installation. As a stable release series, 7.0.x enjoys long-term support.
www.grass.osgeo.org

BLUESKY REVOLUTIONISES AERIAL PHOTOMAP PRODUCTION WITH MICROSOFT ULTRAMAP

Aerial mapping company **Bluesky** has revolutionised the production of aerial photography, reducing the time taken to process the terabytes of data captured by more than 75 percent. Following a major research project, the team at Bluesky's Leicestershire production facility has implemented a **Vexcel UltraMap** system, which has allowed for the introduction of a continuous, uninterrupted processing workflow. By investing in an entirely new workflow, Bluesky has also improved the quality of the aerial images, reducing "building lean" and image distortion, and the accuracy of its digital height models. Bluesky's investment in software follows the recent purchase of two **UltraCam Eagle** cameras, also from **Microsoft**, and the introduction of new flying practices. In addition, Bluesky has recently secured a number of high profile contracts, including a multi-million pound contract for the **Department for Environment, Food and Rural Affairs (DEFRA)**, and the **Ordnance Survey**.
www.bluesky-world.com



SAN DIEGO POLICE DEPARTMENT SELECTS HEXAGON SAFETY & INFRASTRUCTURE

The City of San Diego Police Department has selected an integrated suite of public safety software from **Hexagon Safety & Infrastructure** for emergency call handling, officer dispatch and incident management. Replacing an out-dated and unsupported dispatch system, the Hexagon solution will expand the San Diego Police Department's incident response capabilities through map-based views for calls, events and units in the field. The agency's field officers will have in-car access to call information in real

time to improve efficiency and situational awareness. The solution features Hexagon's **Intergraph Computer-Aided Dispatch (I/CAD)**, industry-leading incident management software. "Our solution will help the San Diego Police Department manage calls, incidents and resources better while enabling it to interface with other municipal, state and federal agencies," said **David McDonald, Vice President and General Manager for U.S. public safety, Hexagon Safety & Infrastructure**.
www.hexagonsafetyinfrastructure.com.

NEW IGI AEROOFFICE & TERRAOFFICE V5.4.4350

IGI has launched the new version of **AEROoffice & TERRAoffice** software. This new version has improved, and the most important feature is the newly introduced coverage maps for scanning sensors. The sensor footprint can now be adjusted via the setup page. It is now possible to select and define if the sensor has a camera footprint, a scanner footprint or maybe no footprint. The scanner footprint is now no longer an extension

to a camera, like as it was in earlier versions. It is now possible to operate changing colours for the scanner footprints. Each scanline can have its colour in order to well identify scanlines from neighbouring scanlines and therefore notice the overlapping areas or potential holes. Such effects are considered important in the new IGI AEROoffice & TERRAoffice software which is available now. www.igi-systems.com

VISIONMAP LAUNCHES THEIR NEW WEBSITE

Israel based **VisionMap** has announced the launch of its new intuitive website. The new website provides quick and intuitive access

to VisionMap's versatile line of products and applications, as well as extensive resources for customers. It features rich interactive content that demonstrates VisionMap's unique offerings such as vast-area coverage and extremely high resolution imagery. The homepage introduces VisionMap's new slogan, "**When You Need the Big Picture**," representing the company's mission to provide customers with the means to quickly capture extensive areas while acquiring comprehensive layers of information. According to **Sarah Hakim, Marcom Manager at VisionMap**, "The new enhancements will provide a superior and informative experience for our visitors. The new application-driven content will help guide visitors to the imaging solutions best suited to their needs." www.visionmap.com.

