

CGG ENTERS INTO A BINDING AGREEMENT FOR THE SALE OF ITS MULTI-PHYSICS BUSINESS

CGG has entered into a binding agreement with NEOS for the sale of its **Multi-Physics Business Line** encompassing gravity, magnetic, electromagnetic and radiometric surveys with an advanced range of airborne fixed-wing and helicopter systems and the General Geophysics Italy business specializing in high-end land EM processing and imaging. NEOS is a US American exploration solutions provider to energy ministries and natural resource firms involved in oil & gas, minerals, and groundwater extraction. The Transaction is expected to close during the summer following receipt of required approvals and licenses, at which time the businesses will transfer. Financial terms of the Transaction are not being disclosed.

Jean-Georges Malcor, CEO of CGG, said: "We look forward to establish long term business relationships with NEOS as our clients are looking for extensive knowledge and expertise of the Oil and Gas value chain. www.cgg.com

HERE TRAFFIC IMPROVES ETA IN LATEST TELOGIS NAVIGATION AND ROUTE PLANNING

The latest releases of **Telogis Navigation** and **Telogis Route** software will include **HERE Real Time Traffic** and **Traffic Patterns** with historical data and real-time estimated time of arrival (ETA) updates. These powerful analytic tools provide Telogis mobile enterprise customers comprehensive road information for more accurate and efficient route planning. With **HERE Traffic**, the accuracy of ETA estimations can be precision tuned whether companies and organizations are planning a route on the fly or days ahead. Real-time traffic gives a comprehensive picture of current road conditions that will affect truck-specific directions in Telogis Navigation and accurate calculations in Telogis Route. Additionally, HERE technology enables Telogis customers to optimize their route planning in advance by taking into account how traffic flows historically on the selected roadway at a given point in the day. <http://360.here.com>.



WORLD HERITAGE SITE SURVEYED BY QUESTUAV TEAM IN A NARROW-WINDOW MAPPING MISSION.

Pafos Archaeological Park saw modern technology meet the ancient world when a **QuestUAV** pilot and commander team used the **Q-100 DATAhawk** professional mapping drone to successfully complete a narrow-window operational survey. A mere 15 minute flight allowed the team to collect 410 high-resolution images (with a 3.5cm GSD) across a 1.1km² region of this famous **UNESCO World Heritage** site near Pafos harbour. Fortunately, the weather was sunny with medium wind strength. The

international survey was commissioned by the **Cyprus University of Technology** at the **RSCy2016 Fourth International Conference on Remote Sensing and Geoinformation of Environment** in April 2016. The team arrived on-site for a "narrow-window" survey and their mission was completed, and they were off-site within 3 hours. Similar surveys performed from a UK base of operations could be concluded within 2 days, including planning and travel. www.questuav.com

ANATUM FIELD SOLUTIONS PUBLISHES EVALUATION OF BLUETOOTH SUB-METER RECEIVERS

Anatum Field Solutions, a GNSS equipment rental company, has published the results of an extensive evaluation of **Bluetooth sub-meter GNSS receivers**. The evaluation was conducted on a GNSS test course in Tigard, Oregon with 13 Reference Points established in open sky, light tree canopy, moderate tree canopy, and heavy tree canopy using an optical instrument operated by a land surveyor and referenced to NAD83/2011 datum with ITRF08 coordinates computed as well. The evaluation was focused on the performance of Bluetooth GNSS receivers rated at or near sub-meter precision by its manufacturer, and

focused on performance in difficult conditions, namely light/moderate/heavy tree canopy, even within arms reach of 30" Douglas Fir trees. The results of the evaluation focus on the accuracy of each receiver in various environments and also the receiver's ability to reasonably estimate the precision in those environments. The full report can be viewed at www.anatumfieldsolutions.com



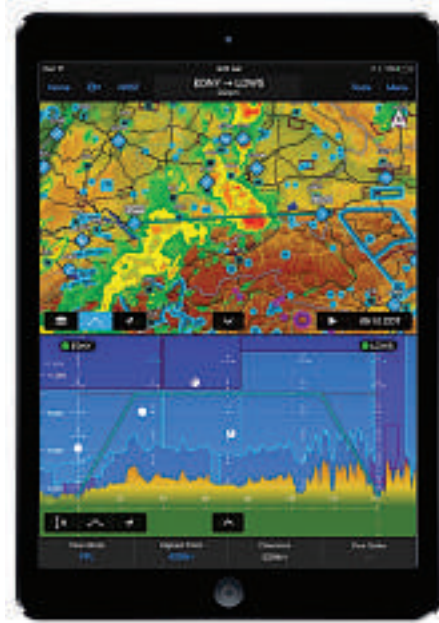
NEW MEXICO CHOOSES HEXAGON SAFETY & INFRASTRUCTURE

The **New Mexico Department of Public Safety** has selected an integrated suite of public safety software from **Hexagon Safety & Infrastructure** for its state-wide incident management system. For use by the **New Mexico State Police**, the computer-aided dispatch (CAD), mobile and analytics solution will improve call handling and dispatching, enhance officer response and enable agency-wide reporting. Replacing a decades-old system, the Hexagon solution will modernize the Department of Public Safety's incident

management capabilities by providing a robust platform to meet the high demands of its dispatching operations and field units. The solution will also help the agency achieve its long-term goal of expanding incident management capabilities to other agencies across the state. "The Hexagon solution will help us meet our goals through a modern, scalable platform built for future growth," said **Cesario Alvillar, project management bureau chief, New Mexico Department of Public Safety**. www.hexagonsafetyinfrastructure.com.

GARMIN® INTRODUCES MAJOR ENHANCEMENTS TO GARMIN PILOT™ FOR EUROPEAN OPERATORS

Garmin International Inc. has announced new enhancements made available within the **Garmin Pilot app for iOS mobile devices**. Pilots flying around the globe, including Europe, are now offered the option of filing VFR flight plans for free directly with the country **Aeronautical Information Service (AIS)** with a **Garmin Pilot** subscription. Additional features for iOS include a flight profile view, new VFR charts for the United Kingdom and France, customized personal minimums, preferred runway selection based on favorable winds, **aera® 660 integration** and new, cost-effective pricing subscriptions. "We're dedicated to growing our global presence with Garmin Pilot by now offering pilots the capability to file their flight plans directly within the app, while also expanding chart availability within select European countries," said **Carl Wolf, Garmin's vice president of aviation sales and marketing**. Visit the Apple App store to download Garmin Pilot and visit www.garmin.com/aviation



JUNIPER UNMANNED AND PULSE AEROSPACE ANNOUNCE STRATEGIC BUSINESS PARTNERSHIP

Juniper Unmanned, Inc. has entered into a strategic business partnership with **Pulse Aerospace**, to provide operator training services for Pulse's unmanned aircraft system (UAS) product line. This agreement includes comprehensive training support for both the VAPOR 35 and 55 unmanned helicopter systems. In this role, Juniper Unmanned will provide classroom and "hands-on" field training instruction for all Pulse Aerospace customers worldwide. To support Pulse's UAS training requirements, Juniper Unmanned plans to deploy its team of experienced aviation professionals to deliver expert technical instruction that supports the implementation of UAS solutions for commercial applications. In addition, Juniper has agreed to provide a 12 month subscription of **Sparrow**, its cloud-based flight management system, with the purchase of each Pulse Aerospace aircraft. "Juniper Unmanned is delighted to support Pulse Aerospace with operator training services for their unmanned helicopter systems," remarked **Jeff Cozart, Chief Executive Officer of Juniper Unmanned**. www.pulseaero.com <http://juniperunmanned.com>

SIMACTIVE ACHIEVES BREAKTHROUGH WITH LATEST CORRELATOR3D™ RELEASE

SimActive Inc. a world-leading developer of photogrammetry software, is pleased to announce the latest version of **Correlator3D™**, including a completely redesigned aerial triangulation (AT) module. The tie point extraction and bundle algorithms have been further enhanced, along with the added capability to address problematic input data (e.g. low overlap projects). The release features an industry-first alignment tool which automatically registers new projects to older mosaics and DEMs. It removes the need for recollecting ground control points (GCPs). In addition, a new semi-automatic workflow was developed for GCP tagging. "Our significant R&D efforts on the AT are due to its substantial impact on all subsequent results", said **Louis Simard, CTO of SimActive**. "As such, the release vastly improves and simplifies the entire production chain." www.simactive.com



FIRST BENTLEY CONTEXTCAPTURE WORKSHOP IN MADRID, SPAIN

Hosted by Bentley partner, **RECURSOS TECNICOS MADRID, S.L. (RTM)**, and sponsored by **Bentley Systems**, the first **Bentley ContextCapture** workshop took place in Madrid on April 21st. The workshop was attended by companies, institutions and professionals of the many different industries interested in photogrammetry software producing high resolution 3D models from aerial photographs. The attendees were very impressed with the practical presentations of examples already conducted and could follow

the whole teaching process through exercises provided by **RTM** in their laptops. They mentioned that the event was very friendly with easy to learn and to follow contents of the workshop. The attendees came from various parts of Spain like Toledo, Catalunya, Basque Country, Galicia, Madrid, even Balearic Islands and kept very attentive along the whole workshop. They found the applications really interesting with a high potential use for a great variety of projects, soon to be undertaken. www.rtm.es

MICROMINE AND CARLSON SOFTWARE INC. STRENGTHEN THEIR PARTNERSHIP

MICROMINE continues to strengthen its partnership with **Carlson Software Inc.** after a recent week-long visit at MICROMINE's Perth HQ. **Pitram**, MICROMINE's leading Fleet Management and Mine Operations Solution for underground mines will be integrated with Carlson's machine control solutions. The objective of the integration is to enhance Pitram's machine guidance and fleet management capabilities. The integration between the two systems will increase Pitram's surface fleet management capabilities by providing high precision machine guidance. Equipment operators will be able to perform activities such as drilling, excavation and loading more precisely, ensuring objectives are achieved more efficiently. **MICROMINE Chief Operations Officer, Michael Layng** said "MICROMINE's partnership with Carlson will provide significant benefits to both existing and future Pitram customers globally. Through the introduction of machine guidance within Pitram, we are strengthening the solution's fleet management capabilities". www.micromine.com www.carlsonsw.com

ALIGNED ASSETS ANNOUNCES PARTNERSHIP WITH WHAT3WORDS

Aligned Assets are pleased to announce the introduction of **what3words** into their gazetteer products. **what3words** is a simple way to communicate a precise location based on a global grid of 57 trillion 3 meter x 3 meter squares. Each square has a pre-allocated fixed and unique 3 word address. For example, the 3 word address for the front door of the **what3words** office West London is **index.home.raft**. **Aligned Assets** office in Woking is at **fresh.parent.apple**. Why are 3 word addresses useful? Whilst latitude/longitude coordinates are accurate they very hard for regular people to use. By using 3 word addresses with the **Aligned Asset** product range, **Aligned Assets** will be able to automatically generate and store the 3 word address for any address held in its Gazetteers. This includes **Symphony iManage**, **Bluelight** and **International**. The 3 word address can then be viewed, searched for and updated within the products mentioned above. www.aligned-assets.co.uk <http://what3words.com>



NCTECH GOES OFF-ROAD WITH TOP GEAR!

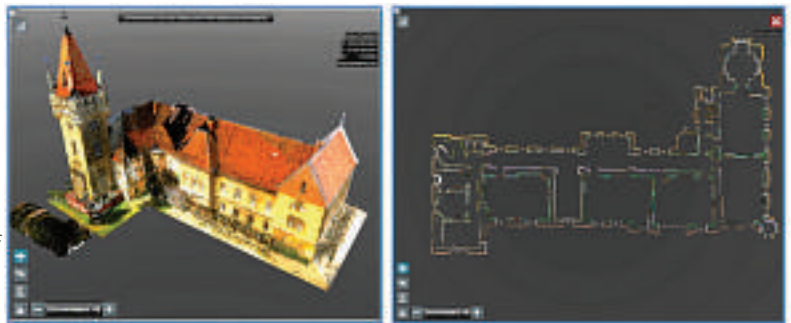
Top Gear USA in Los Angeles approached **NCTech** with the idea to capture in 360 degrees the **Rubicon Trail**, which is both one of the USA's toughest and one of the WORLD'S toughest off road trails covering over 22 miles with 12 miles of rough rocky terrain. The **NCTech iSTAR 360 degree HDR 50 Megapixel** camera was the most suitable camera for this task with its automatic tilt leveling and is controlled by its internal touchscreen, features time-lapse modes

and can also be vehicle mounted. These features made it perfect for the project. It was mounted to the front convoy vehicle, automatically capturing images on time-lapse mode for the entire trip. The vehicles drivers could now concentrate on driving while the **iSTAR** captured 1000's of images during the journey, in full 360 degrees and at 50 megapixel resolution including on-board GPS positioning and horizon leveling. www.nctechimaging.com

ANNOUNCING EUCLIDEON GEOVERSE 1.4, INCLUDING AUTOCAD® SUPPORT

Euclidean has announced the release of **Geoversion 1.4**, a unique technology allowing users to instantly load and interact with point cloud, CAD and image data of any size and even stream it over the internet. **Geoversion 1.4** adds incredible performance improvements to streamline workflow like never before. With a complete visualization up to a volume of 128TB of point clouds data and image data, CAD models and 3D city models in less than a second, the users will obtain an overall quality assessment of their projects in the blink of

an eye. **Euclidean's Unlimited Detail** technology facilitates global access to data through the internet, enabling users to perform quality assessments, kilometers away from production units, to increase productivity. The **Unlimited Detail** algorithm is so efficient that even the largest of point clouds can now stream easily across ordinary ADSL or even mobile 3G. www.meixnerimaging.com.



RAC'S NEW CANADIAN RAIL PORTAL IS POWERED BY K2 GEOSPATIAL'S JMAP

K2 Geospatial, the editor of **JMap**, is pleased to announce the creation of the **Canadian Rail Portal**. Initiated by the **Railway Association of Canada (RAC)**, the **Portal** was built using **JMap**, **K2 Geospatial's** map-based integration platform. The idea of the portal arose from a need to provide online access to the Canadian Railway Atlas and its data on Canada's 45000-km railway network. With **JMap**, the **RAC** can now offer a map-based overview of the entire

network in real time, along with powerful geospatial tools, all of which are accessed through a user-friendly interface. This visual representation of the network results from a consolidation of data from various private and public sources. The **Canadian Rail Portal** is poised to become an indispensable tool to plan and manage initiatives in areas such as community involvement, marketing, and emergency response. www.k2geospatial.com

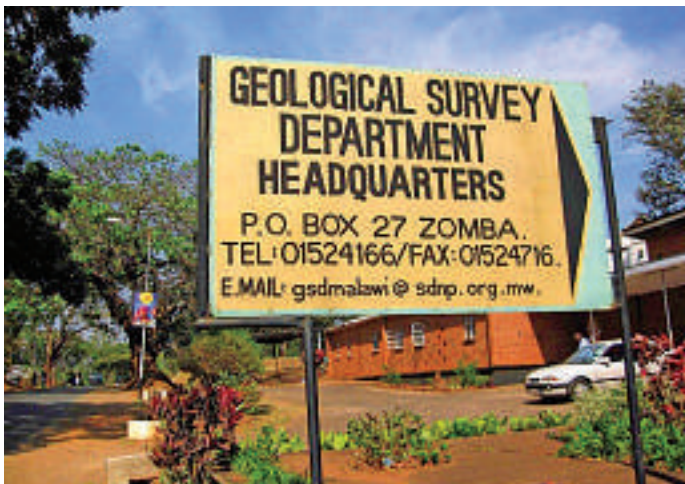
LIZARDTECH LAUNCHES NEW WEBSITE

LizardTech, the creator of **MrSID** and provider of software solutions for managing and distributing geospatial content, has announced the launch of its newly redesigned website. The site boasts a clean design, improved functionality and enhanced content. The site can be accessed at www.lizardtech.com. "We are happy to announce the launch of our new website and the improved experience it offers to our customers, partners and the media," said **LizardTech's Director of Product & Development, Lisa McLeod**. "The redesigned website is part of our ongoing efforts to provide our customers with quick and easy access to LizardTech products and essential industry information." LizardTech will update the site regularly with news about product launches, business activity, events and partner information. Visitors are encouraged to explore the new website and sign up for the company's newsletter at www.lizardtech.com.



GAF TO IMPLEMENT A GEOLOGICAL DATA MANAGEMENT INFORMATION SYSTEM IN MALAWI

The Ministry of Natural Resources, Energy and Mining in Malawi is establishing a **Geological Data Management Information System (GDMIS)**. German company, **GAF** has been awarded a contract to design and implement the system at the **Geological Survey Department (GSD)** in Zomba. Access to geological information is essential for every government, in order to assess the country's mineral potential. It is also a cornerstone for attracting new investors to the country's mining sector. Straightforward and comprehensive access to geological and mineral information is essential in promoting and developing the mineral resources sector. To increase the capacities of the Geological Survey Department, GAF are to design and implement a modern, GIS-based GDMIS comprising of a central data repository, a management cockpit and a data catalogue accessible through the internet. The system will support the GSD in the management, safe storage and dissemination of geoscientific data for the entire country. www.gaf.de



RIEGL VP-1

Helipod for Airborne Laser Scanning



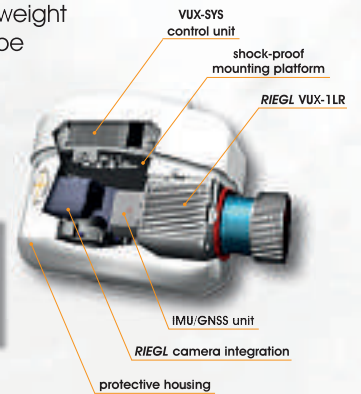
The **RIEGL VP-1**: Fully integrated Helipod for Airborne Laser Scanning!

With the VP-1 Helipod, RIEGL provides a new, user-friendly, turnkey airborne laser scanning solution.

The **RIEGL VP-1** is designed for the **VUX-SYS**, which comprises the **RIEGL VUX-1LR** survey-grade LIDAR Sensor, the **IMU/GNSS** unit, the control unit and a digital camera. The **VUX-SYS** is fully integrated into the small and lightweight **RIEGL VP-1** pod, to be mounted on standard hard points and typical camera mounts of manned helicopters.

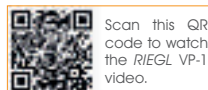
Meet us at

GPEC 2016
Leipzig | Germany
June 7 - 9, 2016
Booth H40



RIEGL VP-1 Key Features:

330° field of view | 750,000 meas./sec. | range up to more than 1,300 m | operating flight altitude (AGL) up to 1,740 ft | multiple target capability | eye safe (Laser Class 1)



www.riegl.com



RIEGL LMS GmbH, Austria | RIEGL USA Inc. | RIEGL Japan Ltd. | RIEGL China Ltd.

EXACTEARTH AND LARUS TECHNOLOGIES ANNOUNCE STRATEGIC ALLIANCE

exactEarth Ltd. has entered into a **Strategic Alliance Agreement** with **Larus Technologies** an Ottawa-based provider of adaptive learning and predictive analytics software. Under the Agreement, the two companies will work together to develop and market Big Data analytics-based software applications and information services for the global surveillance and intelligence markets. As part of the Agreement, exactEarth will gain an exclusive license to Larus' Big Data analytics platform, **Total::Insight™**, for the Maritime market. Developed over 10 years, Total::Insight provides an advanced adaptive learning and Big Data analytics decision-support capability that has been deployed predominantly in the defence market. In return, Larus will gain access to exactEarth's map visualisation IP for integration into Total::Insight-based solutions for non-Maritime markets and to exactEarth's extensive data archive to perform advanced pattern-of-life analysis. "Larus and exactEarth are an exciting Canadian combination," said **George Di Nardo, President and Founder of Larus**. www.exactearth.com www.larus.com

MICROPILOT SELECTS SPIRENT GNSS SIMULATORS

MicroPilot, experts in autopilots for unmanned aerial systems (UAS), has selected GNSS specialists **Spirent Communications**, to help enhance the location accuracy and positioning resilience of its devices. MicroPilot engineering teams are using **Spirent's GSS9000 GNSS** simulator to quickly verify their designs to offer end users the most accurate positioning regardless of location. MicroPilot is using multiple-antenna systems and required a simulator that can support these features and provide high-speed simulation. "Our customers demand products that are reliable and built to a high standard; and as UASs become more widely used their location and motion accuracy are becoming important issues," said **Howard W. Loewen, President of MicroPilot**. "MicroPilot systems use GPS to navigate accurately, so we need to rigorously verify this functionality. The Spirent simulators have the performance to meet our most demanding use cases." The GSS9000 GPS/GNSS simulator is the ultimate solution, giving the very best in performance, flexibility and capability. www.spirent.com



MERRICK AWARDED CONTRACT WITH SOUTHERN NEVADA WATER AUTHORITY

Merrick & Company was recently awarded a contract through the **Southern Nevada Water Authority (SNWA)** to provide high-resolution **LiDAR** services in support of the water agency's most successful water conservation program, known as the **Water Smart Landscape (WSL)** program. The high-resolution LiDAR data will be collected as part of the **United States Geological Survey's (USGS) 3D Elevation Program (3DEP)** to identify different types of vegetation throughout the Las Vegas Valley, as well

as help with ongoing vegetation research associated with the WSL program. SNWA developed the WSL program in the late 1990s as a rebate incentive program for property owners in Southern Nevada. The program involves transforming existing turf landscaping into drought-tolerant landscaping that blends with the environment and promotes SNWA's water conservation goals. To date, SNWA has successfully converted over 177 million square feet of turf and has an estimated water savings of over 98 billion gallons. www.merrick.com

BASYS USER CONFERENCE: A VALUABLE BENEFIT TO EVERY USER!

BARTHAUER will be hosting the **BaSYS User Conference** for the seventh time on 6 and 7 July 2016. The focus of the **Trade and User Conference** is a wide-spectrum programme of lectures, workshops and new developments around the BaSYS network information system. "As a provider of software solutions we want to ensure that our users get the most practical use out of the software that we developed," explains **Jürgen Barthauer, Managing Director of**

Barthauer Software GmbH. "This was our reasoning behind the 2010 launch of the BaSYS User Conference, an event focusing on the efficient use of the BaSYS network information system. What started as a small meeting has now become a permanent fixture in the diaries of our users." The seventh BaSYS User Conference will be held in Heidelberg and it represents the ideal platform for professional knowledge and know-how transfer. www.barthauer.de





TRIMBLE VRS NOW AND TRIMBLE XFILL-ALWAYS ON

Combine your Trimble VRS Now™ subscription with CenterPoint® RTX to use enhanced Trimble xFill™* on your Trimble R10 GNSS receiver and continue working through potential cellular outages or interruptions, avoiding downtime and enhancing productivity in weak mobile coverage areas.

Powered by Trimble RTX™ Technology, Trimble xFill™ runs seamlessly in the background, automatically bridging the gap if your RTK or VRS correction source is interrupted due to cellular signal disruption or loss of radio line of sight.

xFill continues to be free for the first 5 minutes of use on all Trimble R10 GNSS receivers and can now be used indefinitely beyond 5 minutes with a valid CenterPoint RTX subscription, allowing you to maintain centimeter-level satellite-delivered corrections so you're always on, even when your cellular network may not be.

- ▶ **To purchase: Contact your local Trimble authorized reseller**
- ▶ **For more information: [Trimble.com/positioning-services](https://www.trimble.com/positioning-services)**

Maintain productivity in weak mobile coverage areas with enhanced Trimble xFill



© 2015 Trimble Navigation Limited. All rights reserved. Trimble, the Globe & Triangle logo are trademarks of Trimble Navigation, Limited, registered in the United States and in other countries. VRS Now™, Trimble xFill and CenterPoint RTX are trademarks of Trimble Navigation Limited. All other trademarks are the property of their respective owners.

*Performance and coverage availability dependent on user's geographic location, GNSS constellation health, level of multipath and proximity to obstructions such as large trees and buildings.

CALL FOR SPEAKERS FOR TRIMBLE'S 2016 DIMENSIONS USER CONFERENCE

Trimble is now accepting speaker candidates for **Trimble Dimensions 2016 International User Conference** being held in **Las Vegas, Nevada—The Venetian**, November 7-9, 2016. Sessions at Dimensions User Conference address some of the hottest topics and groundbreaking trends in Agriculture, Building Design, Construction and Operation, Civil Engineering and Construction, Drilling and Piling, Earthworks, Forestry, Mapping and GIS, Marine Construction, Mobile Mapping, Monitoring, Paving, Photogrammetry and Remote Sensing, Public Administration, Quarry and Aggregates, Rail, Scanning, Surveying, Transportation and Logistics, and Utilities. Tracks are designed to highlight the many ways businesses in these markets can gain a competitive edge by using Trimble's software, hardware and services. Speakers will share their knowledge with thousands of industry professionals on the innovative ways technology and solutions are used in real-world applications. Potential speakers are encouraged to visit Trimble's website to learn more about the application process and to submit their abstract. www.trimble.com.

GEOTAB OFFERS NEW PERSONALIZED CUSTOMER SUPPORT SERVICES FOR ITS TELEMATICS SOLUTIONS

Geotab has announced a new level of customer support aimed at creating a truly personalized experience for customers. Geotab leverages the knowledge and technical expertise of its support teams such as one-on-one training; device staging; dashboard configuration and custom reports; in addition to live chat, web and telephone support; extended hours of operation; and multi-language support. This level of customer support is unlike anything currently offered in the telematics industry. "At Geotab, we are firm believers that customer service doesn't end with simply addressing customer requests – rather, it also involves providing education, building engagement, and fostering personal relationships," said **Geotab CEO Neil Cawse**. "We are dedicated to helping customers get the most they can out of the customer support experience, and on an ongoing basis, so that they come away with a thorough understanding of a product's full capabilities for optimal fleet management." www.geotab.com



GLOBAL MAPS FROM EUROPA TECHNOLOGIES HELP DEFINE NO-FLY ZONES FOR DRONES

The latest version of **Europa Technologies'** global map data products includes layers that can assist in the creation of no-fly zones for unmanned aerial vehicles (UAVs). A recent aircraft-drone collision in the United Kingdom highlights the immediate need for mandatory geographic restrictions on drone operation. On 17 April 2016, a British Airways A320 aircraft was struck by a drone during its approach into London Heathrow airport. The aircraft, travelling from Geneva,

was carrying 132 passengers and 5 crew. The incident has been well publicised in both UK and international press and demonstrates the real danger of operating UAVs in controlled airspace. Many media reports have referred to on-board "geofencing" which is the concept of using GPS (or other positioning technologies) with a reference database of explicit areas, which are inclusion or exclusion zones. Should a geofence rule be broken, an action can be taken. www.europa.uk.com

ORBITAL TRACKING CORP. SETUP SPOT GEN3® MESSENGERS FOR UK FORESTRY COMMISSION

Orbital Tracking Corp. has completed its final delivery and setup of new **SPOT Gen3 messengers** for the **UK Forestry Commission** as part of its partnership with **Globalstar**. The SPOT Gen3, is a small, rugged, pocket-sized GPS based tracker designed for use in remote locations, allowing the user to email or text pre-arranged messages to designated family or friends. Up to 550 of the devices will be used by the Forestry Commission to enhance the safety of its staff when working in

areas with unreliable mobile phone and radio communications. In an emergency situation, lone workers can press a single button on the SPOT Gen3 to alert emergency services via the **GEOS International Emergency Response Coordination Centre**. "This recent contract is further proof that Orbital's partnership with Globalstar has positioned us for long-term success in our global markets," stated **David Phipps, CEO of Orbital Tracking Corp.** www.OrbitalTracking.com

