

PEOPLE

Award-Winning Author Andrea Wulf Leads Keynote Address at the 2016 Esri User Conference

Andrea Wulf joined **Jack Dangermond** on the plenary stage at the 36th Annual **Esri User Conference**, the world's largest GIS event. The conference was held June 27–July 1 at the San Diego Convention Center. Wulf recently won the **Los Angeles Times Book Award** in the science and technology category for her book **The Invention of**

Nature: Alexander von Humboldt's New World, published by Alfred A. Knopf. Her Keynote Address related to the exciting adventures of von Humboldt, the most influential naturalist, adventurer, and cartographer of the eighteenth and nineteenth centuries. The Esri User Conference offers inspirational guest speakers, an enormous Map Gallery, software workshops, technology demonstrations, and hundreds of discussions led by users and GIS experts. The annual Esri User Conference is the destination for thousands of international technology experts, who seek the latest innovations in location analysis. www.esri.com



PEOPLE

Molly Schar Named First NSGIC Executive Director

The **National States Geographic Information Council (NSGIC)** has announced that **Molly Schar** joined the organization as its first executive director. Schar, an established nonprofit executive with significant leadership experience growing organizational programs and revenue, started the post on June 20. "The hiring of Molly is the result of nearly two years of planning by the Board. I'm thrilled to have Molly as NSGIC's first Executive Director," said **NSGIC Board President Chris Diller**, the GIS Coordinator for the Wisconsin Department of Military Affairs. "I am impressed by the passion of NSGIC members. Quickly, I've come to understand the significant implications of geographic information technology and data. Our members are leading the way, and I have the great honor of facilitating this intergovernmental and private sector cooperation, coordination, collaboration, and partnership," said Schar. For 25 years NSGIC has provided a unified state voice on geographic information and technology issues. www.nsgic.org



AWARD

Satellite navigation expert is most decorated by Royal Institute of Navigation

A satellite navigation expert at **The University of Nottingham** has now received more top medals from the **Royal Institute of Navigation (RIN)**, in its near 70-year history, than anyone else. **Professor Terry Moore** receives his latest accolade, the **J E D Williams Medal**, for his significant and varied contributions to the RIN, in particular his leading role in staging its major conferences. **His Royal Highness, The Prince Philip, Duke of Edinburgh**, who is patron of the Royal Institute of Navigation, presented the award to Professor Moore at the RIN Annual General Meeting on July 19 at the **Royal Geographical Society** in London. "I am really surprised and delighted," said **Professor Moore, Director of the University's Nottingham Geospatial Institute**. "I have been proud to serve the RIN for many years, and it is a great honour for my contributions to be recognised in this way." www.nottingham.ac.uk

PEOPLE

HERE appoints Peter Meier as Chief Financial Officer

HERE has announced the appointment of **Peter Meier as Chief Financial Officer (CFO)** who joined HERE on August 15. "Peter is a proven leader with profound knowledge of both international financial markets and corporate governance standards. He will play a decisive role in securing the long-term growth of HERE as an independent company and helping it to realize its vision of becoming the open location platform serving multiple industries," said **Edzard Overbeek, CEO, HERE**.

"This is a time when the full potential of location intelligence is coming into view, and I am thrilled to join a company which has so much to bring to this space," said Peter Meier.

Meier brings with him an extensive background in corporate finance and governance, treasury, financial planning and analysis, tax, investor relations, strategic planning, M&A and risk management.

He joins HERE from Kuoni Group where until November 2015 he served as CEO. <http://360.here.com>.



AWARD

Pinellas County Receives Esri Enterprise GIS Award

Esri presented **Pinellas County, Florida**, with the **2016 Enterprise GIS Award** for innovating a smart community governance model that fulfilled county initiatives to build a public GIS with apps that benefit the community. One of those apps used **Federal Emergency Management Agency (FEMA)** open data to save property owners \$5.3 million on **National Flood Insurance Program (NFIP)** premiums. The Pinellas Business Technology Services Board established a group to prioritize and create web GIS apps. Working with the board, the GIS group produced a total of 16 task-driven apps, which make up its public GIS gallery. Tasks included apps for monitoring local crime activity, obtaining zoning information, and researching tax parcel and property valuation information. The board also guided the creation of an open data portal, a self-service hub that allows anyone to map open datasets in the same manner as using the Flood Map Service Center. www.esri.com

PEOPLE

New Managing Director For Fugro GeoServices

Ross Stevens has been appointed MD of **Fugro GeoServices Ltd**, the UK based site characterisation specialist.

Stevens is a chartered civil engineer who joined **Fugro**

Seacore in 2007 after a decade in project management and civils contracting. In 2012, he was appointed deputy MD of Fugro Engineers BV based in the Netherlands. He returned to Fugro Seacore as a director in 2015, ahead of its integration in October 2015 as part of Fugro GeoServices Ltd. During his time at Fugro, Stevens has developed extensive experience in managing global marine site investigations in oil and gas and the renewables markets. Commenting on the appointment Stevens said: "To be taking on the position of MD is a great honour, especially at a time when Fugro is playing such a key role in site characterisation for the UK's new nuclear programme and high speed rail network and supporting infrastructure projects around Europe". www.fugro.com





TWO NEW

RIEGL High Speed Mobile Mapping Systems

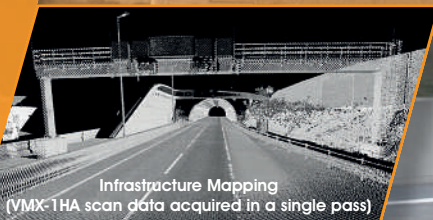
Meet us at

INTERGEO®

Hamburg | Germany
October 11 - 13, 2016
Hall A3, Booth C3.059



The core component: RIEGL VUX-1HA high-accuracy LiDAR sensor



Infrastructure Mapping (VMX-1HA scan data acquired in a single pass)



VMQ-1HA scan data true color point cloud



NEW

Use the latest advancements in RIEGL LiDAR Technology for your mobile applications!

With the introduction of the VUX-1 Series, RIEGL presented the **VUX-1HA High Accuracy LiDAR sensor**. The sensor offers a maximum measurement rate of up to 1 MHz, 5 mm accuracy / 3 mm precision, 250 scan lines per second, and a 360 degree full field of view – a sound basis for survey-grade mobile data acquisition at regular traffic speeds using the new RIEGL Mobile Mapping Systems.

NEW RIEGL VMX-1HA

High Speed, High Performance Dual Scanner Mobile Mapping System

- up to 2 MHz laser pulse repetition rate
- up to 500 scan lines/sec
- eyesafe operation at Laser Class 1
- optional camera system with up to 6 cameras
- aerodynamically-shaped protective cover



NEW RIEGL VMQ-1HA

High Speed, Single Scanner Mobile Mapping System

- up to 1 MHz laser pulse repetition rate
- up to 250 scan lines/sec
- eyesafe operation at Laser Class 1
- interfaces for up to 4 optional cameras
- multiple swivel positions of the measuring head



Scan this QR code to watch the new RIEGL VMX-1HA video. VMQ-1HA video also available.

www.riegl.com

