

COMPANY SHOWCASE

AUTUMN 2016

Our regular 'Company Showcase' feature is the opportunity for suppliers of goods and services from all branches of the geomatics industry to acquaint readers with their latest offerings. Innovation is key to success in today's geomatics market place... one where traditional boundaries are being blurred by the latest trends in convergence and functionality, and it is vital that users can take advantage of these technological advances.

Surveying equipment now incorporates GNSS, GIS, Laser-based and communications, as well as optical capabilities to offer ever higher accuracy and greater local processing power at lower cost. Remote Sensing, in the widest sense, achieves new levels of resolution and precision from Laser, LIDAR, satellite, and aerial sensors, including those carried aboard a new generation of UAVs. The huge volumes of geodata captured by these and other sensors and devices are incorporated in ever more innovative information and location based services that support public and private sector decision makers at all levels, as well as citizens.

Look also for advances linked to the convergence between technologies, from CAD and BIM suites now incorporating GIS and decision support tools to smart phones used to collect and disseminate location-tagged data for commercial and citizen-oriented Open Source applications. For field use, consumers are now spoiled for choice with a wide variety of portable rugged and semi-rugged geodata collection devices based on PDA, tablet and notebook computers. And, of course, the advent of data and software as hosted services via the Cloud presents new challenges and opportunities for users everywhere.

This is an exciting decade for all sectors of the geomatics industry, with innovation powered by creativity, convergence and advances in several allied technologies. Watch this space to keep yourself up to date!

**Next Available Showcase:
Spring 2017
(Published March)
Entry Deadline: January 2017**

BARTHAUER

1

BARTHAUER



Software for Infrastructure and Water Management



GeoDS - construction kit for individual information systems

With GeoDS, the Geoobjects Design Studio, BARTHAUER offers a new kind of tool that saves time through efficiently creating individual information systems. GeoDS can meet almost all individual requirements of the most varied customer groups for an information system through its versatile possibilities for application. GeoDS software solutions can be used, for instance, for asset management, network management, agriculture, pipeline management, community infrastructure management all the way to facility management quickly and cost effectively.

The unique BARTHAUER multi-platform concept

Thanks to the flexible integration of BARTHAUER products with GIS/CAD systems from manufacturers such as Autodesk, ESRI, Intergraph, Bentley and QGIS, along with support for database management systems such as Microsoft SQL Server, Oracle and PostgreSQL, clients have the greatest possible freedom of choice and investment safety.

Visit us at INTERGEO 2016: Hall 1 Booth C1.036

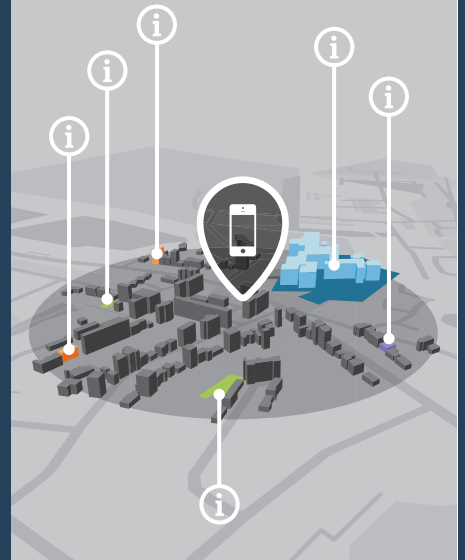
Barthauer Software GmbH
Tel: +49 531 23533-0
e-mail: info@barthauer.de
www.barthauer.de

CADCORP

2

Cadcorp®

SPATIAL INFORMATION SYSTEM



In web mapping, simplicity is the ultimate sophistication

Cadcorp's flagship web mapping product – **Web Map Layers** – is now even easier to use and includes on-line editing.

Web Map Layers 8.0 features a completely redesigned, responsive user interface; stripping it down to the bare essentials. Don't think for a moment that the product has become less powerful. We think that there is no place for complexity in a user interface.

You can judge for yourself by going to the on-line demonstrator at <http://cdcp.io/g>

Web Map Layers 8.0. Sharing Local Knowledge™ on desktop, tablet and mobile devices.

See us on the UK Pavilion at Intergeo 2016 (Hall A1 D1.049)

Cadcorp

Sterling Court,
Norton Road, Stevenage
Hertfordshire SG1 2JY
United Kingdom

Tel: +44 (0) 1438 747996
Fax: +44 (0) 1438 747997
e-mail: cadcorp@cadcorp.com
www.cadcorp.com

CHC NAVIGATION

3



CHC Navigation designs, manufactures and markets a wide range professional GPS/GNSS solutions with a strong international presence and employs more than 800 professionals worldwide. Since 2003, CHC Navigation has been providing thousands of advanced GNSS receivers worldwide combining high performances and features.

180 GNSS Receiver

With the ability to compute a true Triple Frequency RTK pole solution using all four worldwide and multiple regional constellations, the i80 receiver brings a futureproof sub-centimeter RTK solution to surveyors and contractors everywhere.

Without the need of a data collector or computer, the i80's LCD GUI allows for common workflow operations. The CHC i80 is the smallest receiver on the market incorporating dual hot-swappable batteries, allowing for days of uninterrupted work. While small and lightweight, it is packed with a full array of sensors and modules: Internal Tx/Rx UHF, multi-band cellular modem, Wi-Fi, Bluetooth, Serial, USB, etc. – having all these modules integrated into an ergonomic package, GNSS users will realize their most productive day yet.

Meet us at Intergeo: Hall A4, Booth No. E4.001



CHC Navigation
599 Gaojing Road, Building C,
Shanghai, 201702, China.
sales@chcnv.com
www.chcnv.com

ELAINE BALL

4



HOW DO MY COMPETITORS GAIN MORE SALES LEADS?

Want to find out how to improve your own lead generation? Looking for an extra pair of hands or just some support? We're a super hands-on International Marketing Consultancy. A team of marketers with one mission... To design, deliver and implement technical marketing solutions that really deliver results and make you stand out from the crowd.

Don't just take our word for it

"Elaine and her team did an excellent job of assisting us in a European market that was not our expertise to gain both awareness and visibility of our new product, I was not disappointed in the results. I would therefore, indefinitely, recommend Elaine because of the professionalism, enthusiasm and technical marketing ability Elaine brought to the table during this project." Nick Ackerson, Director, Global Marketing and Product Management at LTI

Want to find out how we can help you develop your sales? www.elaineball.co.uk/campaigns

EBTM Ltd
Geospatial Marketers
Amanda@elaineball.co.uk
+44 7968 585824
@EBTMarketing
www.elaineball.co.uk/campaigns

EOS POSITIONING

5



Eos offers the world's most advanced, palm-sized BYOD (Bring Your Own Device) Bluetooth GNSS receivers.

The Arrow GNSS receiver product line is a complete line of high-accuracy Bluetooth receivers from sub-meter to decimeter and centimeter. All of the Arrow receivers deliver accuracy in real-time, anywhere in the world.

The Arrow GNSS receivers are compatible with Apple iPads, iPhones, Android and Windows smartphones, tablets, notebook and desktop computers.

Our products support GPS, Glonass, BeiDou and Galileo for improved performance in difficult environments such as under trees and near buildings.

All Arrow products are built to survive outdoors. They are waterproof and dustproof with an IP-67 rating. The rechargeable battery pack lasts from 9 to 16 hours depending on the model and is field replaceable.

Visit us at: Intergeo 2016 Hamburg

Eos Positioning Systems
191A, Rue St-André
Terrebonne, QC
Canada
Tel: +1 450 824 3325
e-mail: info@eos-gnss.com
www.eos-gnss.com

EUROPEAN SPACE IMAGING

6



30 cm WorldView-3 | Hamburg, Germany | 03 Oct 2015 | © 2015 DigitalGlobe, Inc. – provided by European Space Imaging

Europe's leading provider of VHR satellite imagery

Highest Resolution & Capacity

We provide global satellite imagery of the highest resolution available. Through our partnership with DigitalGlobe we offer a comprehensive portfolio of imagery products up to 30 cm resolution derived from the world's largest and most capable fleet of satellites. Furthermore, customers can access to over 6 billion km² of archive imagery.

Direct Access to DigitalGlobe Satellites

Local tasking and direct satellite up- and downlinking through the European Space Imaging ground station enables optimized data collection strategies, increased flexibility and real-time weather assessments for new collections.

Since 2002 offering services and data to customers in Europe, North Africa, Middle East and CIS countries

Meet us at Intergeo Hamburg, Hall 4A EA.021



European Space Imaging

Arnulfstrasse 199
80634 Munich, Germany
Tel: +49 89 1301420
Fax: +49 89 13014222
e-mail: info@europeanspaceimaging.com
www.europeanspaceimaging.com

GENESYS

7



Photogrammetric Mapping Mapping / Classification from Terrestrial / Mobile / Airborne/ Bathymetric LiDAR.

3D City Modelling using Photogrammetry / LiDAR AM / FM & GIS

Orthophoto Production Field Survey and Data Collection

GIS Application Development Remote Sensing

UAV Data Collection & Processing for Survey & Mapping.

Established in 1997, we are the oldest and most experienced Indian company providing services in Remote Sensing, Photogrammetric mapping, CAD, GIS applications and LiDAR surveys.

Our ISO 9001 2008 Certified production facilities are at Bangalore and Mumbai, India. We are also certified for ISO 27001, 20000 and SEI-CMM Level 5.

Our portfolio includes work done for local and federal governments in the US, Australasia, Indonesia, Europe, the UK, the Middle East, Africa, the UN and India. Based on requirements, and geographical location advantage, we team with local companies in varying roles - partners / sub-contractors / contractors, and participate in Bidding and Execution of Projects.

Genesys International Corporation Ltd

Prestige Terminus II
Airport Exit Road,
Bangalore 17, India
e-mail: jakes.j@igenesys.com
Telephone : +91-9845013234

GEOKYLIA

8

GeoKyLia

GPS-based low cost deformation monitoring system

GeoKyLia and IGN present the GEOCUBE system



Designed to withstand worst environmental conditions, each sensor consumes as low as 0.5W,

It works as a sensor network deployed on the field, interconnected by a robust meshed self-healing RF network.

Thanks to advanced filtering, it measures in real time deformations as low as 1mm RMS.

Data are made available on-site or can be retrieved via Ethernet.

Post processing is also possible, and RINEX data are also available, in order to use the sensors with user's algorithms.

Dedicated to landslide monitoring and infrastructure monitoring, the system can also be exploited as a precise baseline measurement instrument.

The keyword of the device is cost effectiveness enabling dense coverage and longtime measurements

GeoKyLia will exhibit at Intergeo Hall: A3,Booth: B3.035

GeoKyLia

10 rue de Montmorency, 75003 Paris
France
info@geokylia.com
www.geokylia.com

handheld



The ALGIZ RT7 ultra-rugged Android tablet
www.handheldgroup.com/ALGIZ-RT7

Rugged Computers for Tough Environments

Handheld Group is a manufacturer of ultra-rugged tablets and handhelds carrying high IP-ratings and meeting stringent MIL-STD-810G standards for withstanding water, dust, shock and extreme temperatures.

We work with a strong network of reselling partners worldwide, supplying rugged computers to a wide area of field applications, often in the most demanding environments.



Handheld has local offices in Sweden, Finland, Italy, Netherlands, Germany, Switzerland, UK, Australia and the USA. You will find our online product information in 9 different languages.

Meet us at:

SOTI Sync 16 Partner & User Conference
 26-28 September, London

InterGeo Hall A3, booth B3.027
 11-13 October 2016, Hamburg, Germany

European Utility Week
 15-17 November, Barcelona, Spain

Handheld Group AB
 Tel +46 510 54 71 70
info@handheldgroup.com
www.handheldgroup.com

HI-TARGET



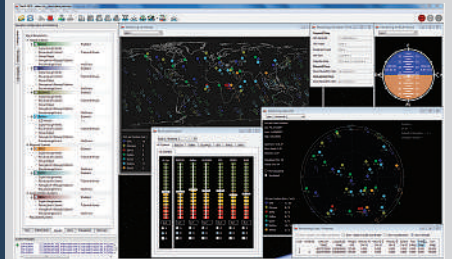
First China now the world!

Since its foundation in 1999, Hi-Target Survey Instruments Co., Ltd has engaged in GNSS high-tech industry, with its business range covering from research and development of GNSS technology, production and marketing of surveying, marine, GIS products, etc. In China, Hi-Target has established a nationwide sales and service network with more than 35 branches and 10 technical service centers. The core business fields of the corporation consists of GNSS surveying product series, digital sounder series, GIS data acquisition system, integrated marine engineering application system, marine surveying, and marine mapping software products.

At present, Hi-Target has more than 1,600 employees, who have constantly dedicated to GNSS technology research and development, production, marketing services and actively participated in the localization campaign of GNSS technology in China. In 2011, Hi-Target has successfully went public on Growth Enterprise Market in Shenzhen, and established its first maintenance branch in Hong Kong. In June 2016, a new maintenance center in Jicin, Czech was founded which symbolizes the first monumental step of Hi-Target's expansion in Europe.

See Hi-Target at INTERGEO, Hamburg, 11-13 October. (Hall A4, stand 069).

Hi-Target Survey Instruments Co.
 Building 13, Tian'An Technology Zone HQ Center, No. 555, the North of Panyu RD, Panyu District, 511400 Guangzhou, China.
 +86 020-28688296
 +86 020-22883900
info@zhdgps.com
www.zhdgps.com/en/Index.aspx



IFEN GmbH is a leading provider of GNSS products and services. The technology portfolio includes GNSS simulators, receivers, test ranges, simulation and data processing tools as well as seamless LBS.

IFEN's GNSS Simulators are designed to provide the users with a complete range of integrated navigation test products and services unique on the market. The configurable flexibility enables the user to select the best solution - all in one box. Support of all existing and coming GNSS systems is the basic offer you can rely on.

The SX3 GNSS Receiver



supports all GNSS systems on all frequencies. Its unique real-time signal processing capability supports more than 300 channels simultaneously. Take full advantage of the 4x50 MHz RF bandwidth available with the SX3 RF front-end hardware.

Our outstanding satellite navigation know-how is also offered to customers for services like GNSS system studies, research and development of navigation and integrity algorithms, design and development of GNSS software and hardware up to engineering of turnkey facilities and systems.

Visit us at:
ION GNSS+ 2016 / Portland, Oregon
12 September – 16 September
Booth #208

IFEN GmbH
 Alte Gruber Str. 6
 85586 Poing
 Germany
 +49 8121 22 38 20
sales@ifen.com
www.ifen.com



Introducing the NEW Geode™, a real-time, sub-meter GNSS receiver, designed for high-quality data collection in rugged environments.

This all-in-one receiver affordably provides real-time, precision data. Featuring one-button simplicity and versatility, it's compatible with any Juniper Systems rugged handheld computer, including the new Mesa 2™ Rugged Tablet. Plus it works with a wide range of Windows®, Windows Mobile, and Android® devices.

The small, compact design makes the Geode easily carried by hand, in a pack, or mounted on a pole. It has all-day battery power and a wide operating range in extreme temperatures. It's built to Juniper Rugged™ standards for reliable performance in harsh environments, with an impressive IP68-rating against dust and water.

Based near Birmingham, U.K., Juniper Systems designs and manufactures ultra-rugged handheld computers for extreme environments – ideal for surveyors' needs in the geomatics and GIS industries.

See Juniper Systems at InterGeo, Hamburg, 11-13 October: Halle A1, Stand D1.046



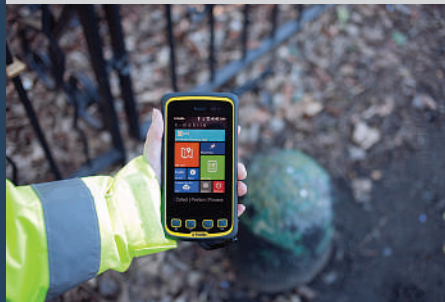
Juniper Systems
Tel +44 (0) 1527 870773
United Kingdom
info@EMEA@junipersys.com
www.junipersys.com



K-MATIC, KOREC's in-house software development division, provides a wide range of off the shelf and customised data capture software solutions. The K-MATIC team works on the principle that customisation is the key to solving industry specific challenges and works closely with customers to streamline workflows and turn ideas into workable solutions. Led by one of the industry's most innovative software specialists no job is too small, too large or too diverse.

Key customisable solutions include K-Mobile and K-Asset data collection software. Just released is K-Mobile Android offering the same full functionality of the windows version and ideal for affordable roll outs on large projects or those that wish to carry out data capture with existing hardware such as a smartphone.

See us at Geodata Edinburgh 6 Oct, Geodata London 1 Dec



K-MATIC (a KOREC Group company),
Blundellsands House,
34-44 Mersey View, Brighton le Sands,
Liverpool, L22 6QB.
UK 0845 603 1214
IRE: 00353 1 456 4702
info@k-matic.com
www.k-matic.com



KOREC specialises in bringing Trimble's most innovative, reliable and productive positioning solutions to UK and Irish geospatial professionals, all backed up by extensive technical support, training and consultancy. Market led product development is key to KOREC's offering.

Trimble R10 GNSS – a Trimble and KOREC best seller because, unlike most other providers of survey grade GNSS, development is in-house and fully under Trimble's control allowing the company to meet a very specific set of requirements, namely those of the busy surveyor in the field.

TX8 3D laser scanner – because surveyors want clean, noise free data, a 340m range, fast set ups and a scan time of just 3 minutes.

Trimble S-Series total stations – Trimble's extensive R&D program delivers the S-Series' performance, reliability and patented Trimble technology, including MultiTrack™ for target tracking - 10 year old technology that's still unrivalled by anything else in the marketplace.

KOREC
Blundellsands House,
34-44 Mersey View, Brighton le Sands,
Liverpool, L22 6QB.
UK 0845 603 1214
IRE: 00353 1 456 4702
info@korecgroup.com
www.korecgroup.com



Mapping with Lasers and Smart Devices

LTI designs and manufactures the TruPulse® series, the most widely used professional-grade laser rangefinders in the world for field measurements and mapping. All TruPulse lasers have an inclinometer for 2-D slope values and height calculations which can be viewed right in the scope display. TruPulse 360 models include a fully integrated electronic compass capable of producing highly accurate azimuth measurements from any angle which is used to calculate a 3-D missing line value with a simple, two shot routine. Professionals can BYOD and pair their laser via Bluetooth® to use LTI's Measure App to save, organize, and email raw measurements and calculated values. A universal phone adaptor is also available and serves to align the laser's sighting scope with the smartphone's camera enabling a magnified image of each measured feature.

**Visit LTI at the InterGeo Conference
Hall: A3 Booth: C3.043**

Laser Technology, Inc.
Centennial, Colorado, USA
Tel: +1.303.649.1000
e-mail: info@lasertech.com
www.lasertech.com/GEOCI



Leica Captivate: Be Confused!
Leica ScanStation: Because every detail matters.
Leica Pegasus: Backpack. Mobile. Ready. Capture.

Revolutionising the world of measurement and survey for nearly 200 years, Leica Geosystems creates complete solutions for professionals across the planet. Known for premium products and innovative solution development, professionals in a diverse mix of industries, such as surveying and engineering, safety and security, building and construction, and power and plant, trust Leica Geosystems to capture, analyse and present smart geospatial data. With the highest-quality instruments, sophisticated software and trusted services, Leica Geosystems delivers value every day to those shaping the future of our world.

Leica Geosystems is part of Hexagon (Nasdaq Stockholm: HEXA B; hexagon.com), a leading global provider of information technologies that drive quality and productivity improvements across geospatial and industrial enterprise applications.

Leica Geosystems AG
Heinrich-Wild-Strasse
CH-9435 Heerbrugg
Switzerland
Phone: +41 71 727 31 31
www.leica-geosystems.com



MicroSurvey Software Inc. is pleased to announce MicroSurvey STAR*NET 8.2, the latest and highly anticipated version of the industry-leading STAR*NET least squares network adjustment suite.

STAR*NET 8.2 is all about saving time and money! Network adjustments run much faster and the new Adjust Network with Cluster Detection command lets you combine measurement data for points with different names that fall within a specified 2D or 3D proximity of each other! See the advancements made in STAR*NET 8.2 by visiting microsurvey.com and downloading a trial version or visit booth A1.079 at INTERGEO 2016 and get a one on one breakdown of all the new features of STAR*NET 8.2. by a MicroSurvey software specialist.

VISIT US AT INTERGEO 2016

Location: Hamburg, Germany

Date: October 11-13

MicroSurvey Booth: A1.079

MicroSurvey Office
MicroSurvey Software Inc.
#205-3500 Carrington Road
West Kelowna, BC, Canada
V4T 3C1

Toll Free: 1-800-668-3312
Phone: (250) 707-0000
www.microsurvey.com

OPTI-CAL SURVEY EQUIPMENT

18

opti-cal
surveyequipment.com

Opti-cal Survey Equipment is an industry-leading supplier of land survey and precision measurement technologies based in the UK.

Our partnerships with Leica Geosystems, FARO Technologies, GeoSLAM and SPX Radiodetection mean that we match world-class instrumentation with effective service and unrivalled technical expertise.

Supporting professionals across a diverse range of industries – from Engineering and Construction, to Archaeology and Forensics – we hire and sell both new and reconditioned equipment, as well as providing comprehensive service, technical support and training.

Our mission is to supply you with the latest equipment for the job in hand at competitive prices and support you all the way through to project completion.

We are Europe's biggest supplier of Leica Geosystems instrumentation and with 15 years' experience in the industry, Opti-cal are best placed to supply you with the latest instruments – for any kind of project.

We will be exhibiting at Intergeo, drop by the stand to see a large range of reconditioned survey equipment offering great value for money.

Stand C1.035, Hall A1

Opti-cal Survey Equipment

Unit 3, Orpheus House
Calleva Park
Aldermaston
Reading
RG7 8TA

Reading | Gatwick | Milton Keynes |
Bristol | Huddersfield | Livingston

01189 820 500
sales@surveyequipment.com
www.surveyequipment.com

PHASEONE

19

PHASEONE
Aerial

Medium format, metric cameras for aerial photography.

Phase One are known for their image quality, accuracy and easy integration with leading flight management systems, IMU/GNSS receivers and all popular LIDAR systems.

Dedicated to research, development and manufacturing of these solutions, built specifically for applications such as aerial photography, homeland security and inspection, we provide advanced hardware and imaging software solutions that meet the unique requirements of their users.

IXU 1000 SERIES WITH 100 MEGAPIXEL SENSORS

Large format coverage
Medium format price and size
More coverage • More flying hours • More details



With a flagship camera series, incorporating a 100 MP CMOS sensor we offer large format coverage at medium format size and price.

These cameras are distinguished by their high resolution, wide ISO range and fast capture rate. With a wide choice of lenses, we offer solutions for everything from small UAVs up to large manned aircraft.

Phase One cameras enable more coverage, more detail and more available flying time to increase productivity.

**Exhibiting at Intergeo: Hall A3,
Booth C3.031 Come and view our
winning digital medium format
cameras.**

Phase One Aerial

Roskildevej 39
DK-2000 Frederiksberg
Denmark
Phone: +45 36 46 0111
<http://industrial.phaseone.com>

PIX4D

20

PIX4D
simply powerful



Software for professional drone-based mapping, purely from images

Pix4D technology truly enables lightweight civilian drones to become the mapping and surveying tool of the future: empowering individuals to instantly capture a 3D map of any changing environment.

Pix4Dmapper Pro desktop software is known for its accuracy and reliability, with products used by professionals worldwide in Surveying, Construction, Agriculture, Real Estate and more. The algorithms developed by Pix4D also form the base of many other cloud-processing solutions.

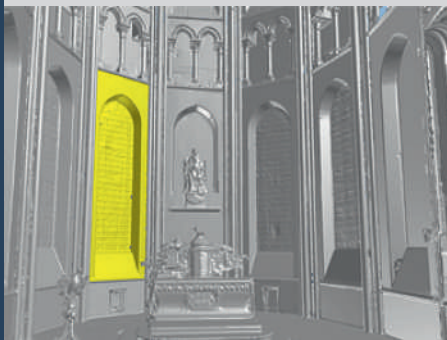
Stay Tuned for Special INTERGEO Launch

Come see us at our INTERGEO booth, where we will unveil your industry's solution, and let you experience firsthand our vision of the future of mapping solutions.

Pix4D
info@pix4d.com
www.pix4d.com



Pointfuse V2 provides an automatic, fast and universal way of converting point cloud datasets to vector geometry, creating a more streamlined workflow compared with manual or semi-automated methods.



The generated surfaces consist of 'discrete' geometries separated by breaklines and edges, making them more usable in third party software. Pointfuse can process data from a wide range of 3D imaging technology, regardless of the data density, scale or quantity. Whether the scan is of an intricate manufactured part or magnificent architectural structure, and whether collected from hand-held, tripod-mounted, mobile or airborne platforms, Pointfuse processes the data in the same way.



Pointfuse is automatic. Pointfuse is universal. Pointfuse is scalable and produces valuable vector geometry.

**See us at InterGeo
Hall 1, Stand D1.050**

**Pointfuse
www.pointfuse.com**



**1 Operator
8 Hours
500+ Scans**

**High Speed Data Acquisition
with the RIEGL VZ-400i**

The latest 3D terrestrial laser scanning solution, the RIEGL VZ-400i, is one of the fastest scanners on the market. High performance scanning technology provides the highest pulse repetition rates and a high line scan speed. Useful features, pre-defined workflows, and helpful apps support efficient data acquisition missions in the field. Up to 500,000 measurements per second and a new standard in user friendliness have been proven in a special field project. Over 500 scans of approx. 5 km of city roads within the complex urban environment of Vienna, Austria, have been captured by just one operator in 8 hours of acquisition time!



**INTERGEO 2016,
Booth C3.059, hall A3:**

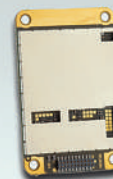
See the full RIEGL product range in Hamburg - the RIEGL team looks forward to meeting you there!

RIEGL Laser Measurement Systems

Riedenburgstrasse 48
3580 Horn, Austria
phone: +43 2982 4211
e-mail: office@riegl.co.at
www.riegl.com



Satel introduces new lightweight M3-modules that have same form factor and pin outs to enable easy integration and quick swap inside host devices. Also a multiband board that combines two Satel modules, GSM and Bluetooth connection into a one motherboard is going to be available very soon.



M3 - TR8
868 - 870 MHz
w/ w.o AES 128
TX 500 mW
4FSK
CMOS -UART



M3 - TR9
902 - 929 MHz
w.o AES 128
TX 1W
2FSK
CMOS -UART



M3 - TR4
403 - 473 MHz
w/ w.o AES 128
TX 1W
4FSK, 8FSK, 16FSK, GMSK
CMOS -UART

Finnish, globally operating high technology company Satel specializes in private mission-critical data connectivity radios. Customers include different types of industrial operators and high technology system providers, using radios of utmost reliability in their solutions. Key application areas for Satel include control of smart utility networks, GNSS support systems (in e.g. land surveying, precision farming, machine control and marine) and Intelligent Traffic Systems.

Satel Oy

P.O.Box 142, FI-24101 Salo, Finland
Tel. +358 2 777 7800
info@satel.com
www.satel.com



SphereVision are leaders in the supply of 360 video recording systems, 360 imaging services and interactive software.

SphereVision Project Builder now includes brand new functionality, allowing iSTAR users to capture measurements directly from within a spherical image. With applications including forensic evidence collection, surveying, asset management and construction, this new functionality lets iSTAR users combine fast data capture and measurement within their existing work flow.



SphereVision Project Builder already allows the integration of 360 media with maps, plans or layouts, to create an interactive view by linking rich media such as video, audio and documents.

**See us at InterGeo
Hall 1, Stand C1.062**



SphereVision
www.spherevision.com



WHY TOPCON

Topcon is the global positioning partner for construction and geo-businesses in the UK and Ireland, offering precision technology that delivers increased efficiency across the workflow. With tailored support across a number of specialisms, including surveying, civil engineering, machine operation, Building Information Modelling and education, Topcon helps professionals to work smarter.

From Japanese origins, Topcon first came to our shores in the 1980s and has since become a well-established name in the construction and geospatial industries. With offices from Newbury to Dublin and a network of dealers reaching across the UK and Ireland, Topcon supplies a range of reliable, robust and easy to use equipment to meet the demands of construction and geo-businesses.

Topcon equipment is compatible with all site conditions and is easy to manage through real-time, remote monitoring. With a five-year warranty on all lasers, a total station management system that provides asset tracking and remote diagnostics and local support for all its customers, Topcon offers added security and dependable technology to avoid downtime on site.

Topcon
www.topconpositioning.co.uk
0845 450 4300



Triad Resourcing is a leading supplier of GIS/Geospatial recruitment resources. Over time we have developed an intimate knowledge of the Geospatial Recruitment market. We understand our clients resourcing requirements at all levels.

Whilst Triad's resourcing capability covers a broad spectrum of IT disciplines, we have developed a specialist practice in Geographical Information Systems that has now been established for over 16 years.

Why Choose Triad?

A partner you can trust.

Over 16 years recruitment experience in GIS.

Commitment to build mutually beneficial long lasting relationships.

Access to a huge amount of potential candidates.

Proven track record in the geospatial recruitment industry.

Cost effective recruitment solutions

Flexible contracts

AGI Members

We are keen to start working with you. Please feel free to get in touch today if you feel we can help.



Jon Graham
Triad | GIS Business
Development Manager
+44 (0)1908 278450
Jon.graham@triad.co.uk

TRIMBLE
NAVIGATION

27



Geospatial information is changing the way people, businesses and governments work throughout the world. By applying Trimble's solutions across industries, Trimble innovation enables economic breakthroughs while enhancing safety, boosting compliance, reducing environmental impact and improving productivity.

Trimble solutions facilitate high-quality, productive workflows and information exchange, driving value for a global and diverse customer base of surveyors; construction, engineering and GIS service companies; farmers; mobile workers; governments; utilities and transportation authorities. Trimble's innovative technologies include integrated sensors, field applications, real-time communications and office software for processing, modeling and data analytics. Using Trimble solutions, organizations can capture the most accurate spatial data and transform it into intelligence to deliver increased productivity and improved decision-making. Whether enabling more efficient use of natural resources or enhancing the performance and lifecycle of buildings and civil infrastructure, timely and reliable geospatial information is at the core of Trimble's solutions to transform the way work is done.

At INTERGEO 2016 Trimble will be showcasing survey, GIS and 3D solutions that are designed for optimal productivity.

**Visit us: INTERGEO 2016, Hall A4,
Stand No: E4.045**

Trimble Navigation Limited
email: geospatial@trimble.com
www.trimble.com

TRAVERSE PC

28



We can't say enough about our Quick View™ Technology. You get to see what your data looks like without drawing it and without fiddling with those drawing commands you can never remember how to use. Just choose the settings you want for Control Points, Side Shots, Setbacks, Curves / Spirals, Surfaces, Alignments and Lot Labels and let our Quick View™ Technology do the rest. We like to say "It starts with your data... and ends with your drawing".

Draw everything the same using templates and stored settings, or choose settings for individual traverses and you have a very sophisticated drawing without ever drawing a thing yourself.

TPC has used Quick View™ since its inception in 1987. Now millions of drawings later, it still creates drawings that same way because it works.

And best of all - it's not CAD!



Traverse PC
+1 541-997-3518
sales@traverse-pc.com
traverse-pc.com

ZOLLER + FROEHLICH

29



3D laserscanners with automated in-field registration

By today, laserscanners improved dramatically regarding speed, range and accuracy. An efficient workflow for data capturing and processing is still the key to a profitable project. Cutting edge developments and integrations of hardware, software and additional sensors allow professionals to manage operation times individually and increase efficiency.

For example, automatic targetless scan registration has become powerful but the algorithms often get robust only under particular conditions, such as preliminary line-up of scans. The combination of initial pose estimation by additional sensors with targetless registration algorithms offers unequalled capacities regarding real-time registration and project control.

An external tablet PC used as synchronized digital fieldbook is capable to run fully automated processing sequences. Shifting registration from the office to the field is beneficial especially in large projects.

**Visit us at InterGeo, Hamburg,
October 11-13, 2016, Hall A4, booth
D4.001**

Zoller + Fröhlich GmbH
Simoniusstr. 22
88239 Wangen
Germany
Tel: +49 7522 9308-0
E-mail: info@zf-laser.com
www.zf-laser.com