

GEOSOFT AND MINALYTIX PARTNER TO BRING MX DEPOSIT TO THE MARKETPLACE

Geosoft and Minalytix have entered a business partnership to commercially release **MX Deposit**, a new Software-as-a-Service (SaaS) solution for drill hole and sample data management. Cloud-based MX Deposit provides a breakthrough solution that simplifies how drilling data is collected, managed, and shared. Drill hole data can be logged and accessed from anywhere in the world. A mobile data entry application is available for more efficient data collection in the field. According to global survey results, cost and complexity of implementation are among the biggest barriers to industry uptake of data management technologies. MX Deposit targets both – providing an agile and affordable way to manage your drilling and sample data with a solution that's easy to implement and use. "We're delighted to partner with Geosoft on its market release," said **David Peres, President of Minalytix** www.geosoft.com www.minalytix.net

9-1-1 CENTERS EQUIPPED WITH ACCURATE LOCATION FROM SMARTPHONE CALLERS

Hexagon Safety & Infrastructure and RapidSOS have partnered to provide public safety agencies that use Hexagon's **Intergraph® Computer-Aided Dispatch (I/CAD)** with accurate location and additional data from the **RapidSOS NG911 Clearinghouse**. Through this partnership, **Public Safety Answering Points (PSAPs)** working with Hexagon will be able to harness data to include accurate handset location from all smartphone location sensors. Millions of smartphones and other connected devices transmit precise device-based hybrid location and additional data to the RapidSOS Clearinghouse when a 9-1-1 call or other request for emergency is made. Through the RapidSOS integration, I/CAD users will be able to query the RapidSOS Clearinghouse when a wireless call is received to retrieve supplementary location and additional data through NG9-1-1 delivery mechanisms. For the first time, PSAPs are able to fully leverage the capabilities of modern smartphones to aid in emergency response, without a need for the caller to use an app. www.hexagonsafetyinfrastructure.com



AGI AND BENTLEY SYSTEMS ANNOUNCE CESIUM CONSORTIUM

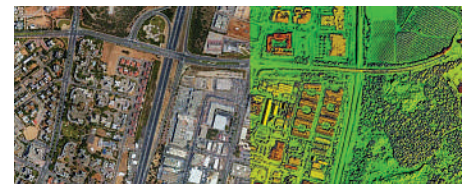
Analytical Graphics Inc. (AGI) and **Bentley Systems** are pleased to announce Bentley Systems as a co-founder of the new **Cesium Consortium**. Cesium is an open source, browser-based virtual globe, first developed by AGI in 2011 for the aerospace and defense communities. Cesium's unparalleled performance in streaming very large datasets through a browser to desktops, tablets, and smart phones has enabled it to become the virtual globe of choice for geospatial viewing. The consortium will now

enable AGI and Bentley to collaborate on the Cesium roadmap to better accelerate and support the requirements for building infrastructure modeling (BIM) and for owners of infrastructure assets. The digital engineering models are created with Bentley's **MicroStation** and BIM applications, and the context is provided through reality meshes, created from digital photography and scanning devices using Bentley's ContextCapture. www.agi.com www.cesiumjs.org www.bentley.com

OPTIMIZING PHOTOGRAMMETRY WITH LARGE-FRAME SENSORS

Pix4Dmapper Pro is more than just drone-mapping software. For professional photogrammetrists, the objective of mapping is not just to generate simple 2D ortho-mosaics and 3D visually-pleasant models, but also to create cartography that provides accurate location and precise measurements. In Pix4Dmapper Pro, users can process large-frame images with an additional add-on. This add-on is for processing images larger than 55 megapixels. Metric camera users like UltraCam, can enter pre-calibrated camera interior and exterior parameters in Pix4Dmapper Pro. By choosing either to fix or to re-compute parameters, it is more flexible and efficient to generate accurate cartography in a short

time. Pix4Dmapper Pro supports the input of pre-calibrated camera interiors, such as focal length, principal point of auto-collimation (PPA), and lens distortion coefficients, etc. One recent method to avoid surveying ground control points for every project is direct geo-referencing, giving the six accurate exterior orientations to produce the surface model and ortho-mosaic. www.pix4d.com



BLUESKY ANNOUNCES 2017 FLYING PLANS FOR IRELAND

Aerial mapping specialist **Bluesky** has announced ambitious plans for the forthcoming 2017 Irish flying season. Already dedicated to producing a high quality orthophoto base for the whole of the Republic of Ireland, together with derived and complementary data products such as 3D height models and Colour Infrared imagery, Bluesky has committed additional resources to fulfill existing orders and future requirements. In addition to extra survey planes, camera equipment and state of the art sensors, Bluesky is also expanding its Cork based headquarters and launching an online Mapshop dedicated to serving the rapidly expanding Irish geographic data

market. "Despite often challenging weather conditions and sporadic acquisition windows, our local knowledge and strategically based aircraft have meant that we have been able to capitalise on virtually every flying opportunity in the last two years," commented **Rachel Tidmarsh, Managing Director of Bluesky**. www.bluesky-world.com



THE KULLASOFT ANDROID VERSION IS HERE!



Kullasoft Ltd are pleased to announce the Android version release for the **PGM Manager app**. The PGM Manager app was specifically developed by **CEO Jimmy Pewtress**, to allow surveyors to capture control point data on-site, upload it to a web portal and create witness diagrams at the click of a button. This significantly minimizes time on site and thus increases productivity throughout the organisation. Now with 96 registered users the PGM

Manager app for surveyors can now officially be utilized by Android users too. Pewtress says, "After talking to a lot of surveyors over the past few months, it became apparent that the majority of smartphones used in the geospatial world run on Android. To accommodate this, it gives us great pleasure to unveil the Android version of our PGM Manager app. To anybody who's already used our iOS version, it will look and feel almost identical. www.kullasoft.com

PCI GEOMATICS MARKS MILESTONE IN CLOUD-BASED IMAGE PROCESSING

PCI Geomatics announced that it is six years since it began providing clients with cloud-based processing.

Big data is a challenge that the remote sensing industry has grappled with for several years, given the flood of imagery increasingly available. In 2011, PCI Geomatics was among the first to innovate and embrace the cloud as an ideal processing platform to handle large-volume data sets. PCI Geomatics implemented a cloud-based GXL system with hundreds of parallel-processing compute nodes that would grow and contract based on processing requirements. For example, Esri Inc. needed to produce over 50 million square kilometers of color-balanced, pansharpened ortho mosaics for publication to its web-based mapping platform, ArcGIS Online. Esri used a cloud-based GXL system to process over 350,000 images in just a few months thanks to the power of the system and its cloud architecture.

www.pcigeomatics.com



SENTINEL DATA ACCESS SERVICE (SEDAS)

An online datahub



SEDAS is an online data hub providing all businesses, researchers and students free access to Sentinel 1 & 2 Earth Observation data.

To download data, or to find out more, visit: sedas.satapps.org



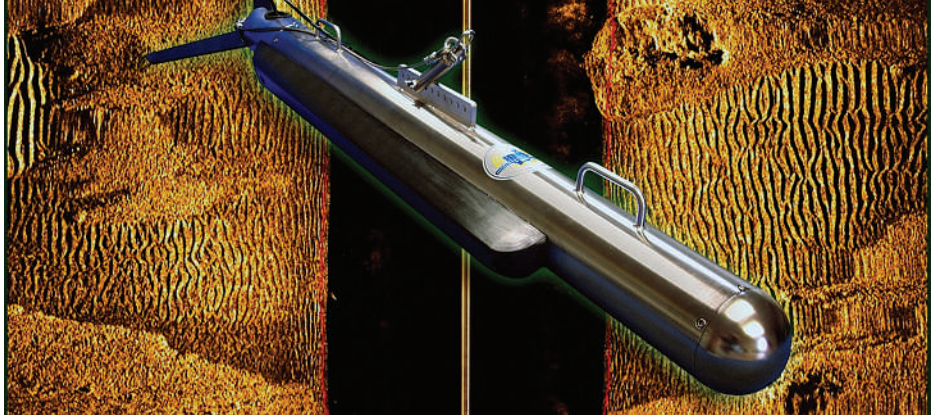
MAPMAKER AND SEES REQUESTS FOR GEOCODING RISING AFTER GOOGLE CHANGES PRICING POLICY

Since Google's policy change that has dramatically increased their pricing, AND experiences a rise of requests for geocoding services. Geocoding is the process of transforming a postal address description to a geographic location. AND CEO **Hugo van der Linde**: "For years AND has provided premium quality geocoding. Of course, we are happy to see an increased demand for our geocoding services as a response to Google changing their pricing policy for heavy geocoding users and are committed to the highest level of uninterrupted service for our users."

Geocoding by AND is based on the AND proprietary digital maps. The proprietary database of AND has street level data up to house number levels for Canada, the United States and all Western European countries. The rest of the world is offered on neighborhood or city level. www.and.com

NEW TRIMBLE GIFT EXPANDS TRAINING AND RESEARCH FOR BUILDING DESIGN AND FABRICATION

A significant in-kind gift from will expand the **University of Massachusetts Amherst's** leadership in training and research in 3D building design, digital fabrication and the sustainable built environment. Partnering with Trimble allows **UMass Amherst** to more fully integrate across its curricula the technological tools that are rapidly transforming how building and living environments are designed and constructed. The gift will establish the 1,300-square-foot Trimble Technology Lab in the new Design Building at UMass Amherst. The lab will include equipment such as Trimble's laser scanners, advanced robotic surveying systems, imaging rovers, Global Navigation Satellite System (GNSS) receivers and many of Trimble's software packages including RealWorks® scanning software, Trimble Business Centre, Vico Office Suite, GCEstimator™ Suite, Tekla® Structures, Sefaira Architecture and its popular 3D modeling software SketchUp Pro. The gift is part of the successful \$300 million-plus UMass Rising fundraising campaign. www.trimble.com



NEW HIGH PERFORMANCE CHIRP SIDE SCAN SONAR SYSTEM BASED ON DEEP ROOTS

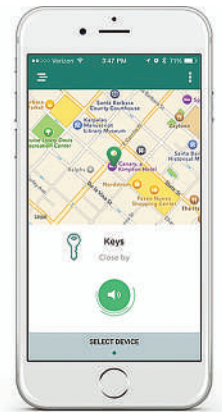
Falmouth Scientific, Inc. (FSI) has reached into its deep well of experience and knowledge to bring you the **HMS-624 digital CHIRP Side Scan Sonar System** which offers dual simultaneous 100/400 KHz frequency operation. "A large percentage of our engineering and production teams, including VP of Engineering Fred Hegg and me, worked at Datasonics developing the first Digital CHIRP side scan sonar as well as their sub-bottom profiling systems," said **FSI's President and Chief Engineer,**

John Baker. "Our portfolio of products and systems are a reflection of that wealth of experience combined with today's advanced technologies." The new HMS-624 leverages these advanced technologies to provide superior imaging capabilities for deep and shallow water applications. The **Tow Fish** electronics incorporate **FSI's CHIRPceiver™ 24-bit CHIRP** signal processing, which results in very high-resolution side scan data at towing depths up to 2,000 meters. www.falmouth.com

TRACKR LAUNCHES UPDATED FIND MY PHONE SKILL FOR AMAZON ALEXA

TrackR announced the **Find My Phone** skill for **Amazon Alexa**, the cloud-based voice service behind the **Amazon Echo** and **Echo Dot**, which gives people the comfort of always knowing the exact location of their phone. Once the skill has been enabled, customers can say, "**Alexa, ask TrackR to find my phone,**" and Alexa will provide the last known address of the phone, no matter where it is in the world. If the customer is already located in the same place as the phone, Alexa will ring it loudly, even if it is on silent mode making it easy to find a misplaced phone. **Chris Herbert, CEO and co-founder of**

TrackR said. "With this new Alexa skill, our customers have the peace of mind of knowing that with a simple request, Alexa will tell them exactly where they left their most frequently used piece of technology, their phone." www.TheTrackR.com



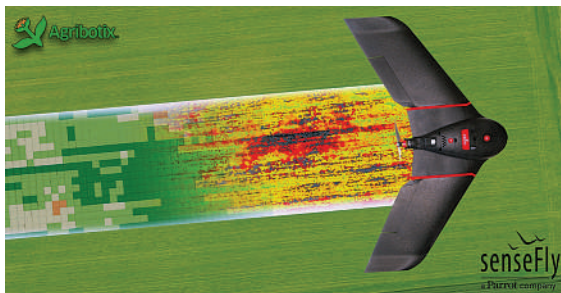
ANITE ENABLES THE CROSS REFERENCE OF CORE NETWORK DATA WITH LOCATION DATA

Anite, now part of **Keysight Technologies**, launched a new module for its **Nemo Xynergy** platform, the **Nemo Xynergy Geospatial Intelligence**. The solution is targeted at RF/performance engineering teams for driveless optimization through correlated analytics, and customer care and service assurance teams for customer experience management, so that they can efficiently prioritize and resolve issues that degrade network quality and customer experience. Nemo Xynergy Geospatial Intelligence addresses three main use cases:

(1) Driving cost effectiveness and efficiency through driveless optimization of the network using OSS generated call trace data. (2) Improving customer experience by analyzing and troubleshooting customer specific calls, sessions and events that are accurately geolocated using proprietary geolocation algorithms. (3) Improving the depth and quality of analytics by enabling correlation of multiple data sources to enhance the problem identification and troubleshooting routines. www.anite.com

AGRIBOTIX™ PARTNERS WITH SENSEFLY

By combining the **eBee SQ**, **senseFly's** advanced, long-range agricultural drone with **Agribotix's** award-winning **FarmLens™** cloud processing platform, the companies have created an easy-to-use solution that is perfectly optimised for the early identification and troubleshooting of crop issues that now offer a new combined solution for professional users. This premium technology solution combines the top drone, sensor and agricultural data processing technologies available today to make collecting and analysing aerial data easier than ever, with several times more coverage, per flight, than is possible with most quadcopter solutions. By adopting the eBee SQ as its new fixed-wing drone platform, Agribotix is signalling



its on-going commitment to sourcing the best hardware on the market to bundle with its award-winning FarmLens™ SaaS platform, a 100% agricultural data processing cloud solution. Having purchased the combined solution, customers will be able to receive full professional hardware support via senseFly's existing network of expert distribution partners. www.agribotix.com www.sensefly.com

CALTRANS TAKES DELIVERY OF THE RIEGL VMX-1HA

Caltrans, the California state agency responsible for highway, bridge, and rail transportation planning, construction, and maintenance, has taken delivery of the new **RIEGL VMX-1HA** mobile mapping system! The RIEGL VMX-1HA is a high speed, high performance dual scanner mobile mapping system. It provides industry-leading performance and dense, accurate, and feature-rich data at highway speeds. With two million measurements and five hundred scan lines per second; this turnkey solution is ideally suited for survey-grade mobile mapping applications to meet the standards of Departments of Transportation nationwide. The powerful technology of the system comprises of two RIEGL VUX-1HA high accuracy waveform LiDAR sensors and a high-performance INS/



GNSS unit, housed in an aerodynamically-shaped protective cover. Four 9mp cameras, along with a LadyBug 5 camera, complement the waveform LiDAR data with precisely georeferenced images. The proven RIEGL software suite provides seamless workflows for mobile data acquisition, processing, adjustments, and deliverables. www.rieglusa.com

FREQUENTIS' LOCATION INFORMATION SUPPORTS NASA UAS TEST IN NEVADA

Frequentis' Location Information Service (LIS) provided situational awareness for ground control stations during **NASA's** latest **Unmanned Aircraft System (UAS) Traffic Management (UTM)** flight tests at Reno Stead airport in Nevada. **Drone Co-Habitation Services LLC**, (DCS) partnering with Frequentis, participated in NASA led test to track flight missions and facilitate air traffic management of drones. Multiple teams flew their drones beyond the line of sight of their operators in order to test the planning, tracking and alerting capabilities of NASA's UTM platform. The **Frequentis LIS** is at the core of the company's UTM client software and provided accurate geo-location and telemetry data received from **DCS** drones and other UAS detected by the LIS service. Frequentis is actively

participating in research activities cooperating with Air Navigation Service Providers globally, integrating small UAS into the airspace. The number of drones is expected to exceed the number of aircraft in approximately 5 years. www.frequentis.com



www.geoconnexion.com



ARROW SERIES

HIGH PRECISION GNSS RECEIVERS

for every mobile device

ARROW GOLD



1 cm RTK with SafeRTK™ & Atlas

ARROW 200



1 cm RTK

ARROW 100



Submeter & Subfoot GNSS

ARROW LITE



Submeter GPS

40-60cm with EGNOS and all SBAS
1cm real-time RTK accuracy
iOS/Android/Windows compatibility
GPS/GLONASS/BeiDou/Galileo/QZSS

 EOS POSITIONING SYSTEMS

WWW.EOS-GNSS.COM

ORBIT GT RELEASES INDOOR MAPPING SOLUTION WITH FLOOR PLAN BUILDER

Orbit GT releases its premiere **Indoor Mapping** product with a spectacular range of functionalities. It's available for download now. "Indoor Mapping v17 is an awesome new release", says **Peter Bonne, CEO of Orbit GT**. "It's wonderful blend of point cloud and imagery management, floor plan building and advanced feature extraction. On top of that, it supports all major manufacturers of Indoor Mapping hardware systems." **Orbit Indoor Mapping** supports ViaMetris, TIMMS, NavVis, Vexcel Panther, Pegasus:Two, and many more through a generic import interface. Imagery and Point Cloud are perfectly aligned. Using Orbit's extent viewing capabilities, one can easily switch between different views. The standard slice viewer has been further tweaked to make the extraction of a floor plan extremely simple. Furthermore, manual, semi-automated and advanced feature extraction tools are available integrated within workflow optimized procedures. www.orbitgt.com

TOMTOM AND MAPPY EXTEND THEIR LONG-TERM RELATIONSHIP

TomTom and **Mappy** announced that they have extended their long-term relationship. Through this new agreement, Mappy has increased its access to TomTom traffic data from 10 countries to now the whole of Europe, matching its coverage access to TomTom maps. Mappy is also positioned to leverage TomTom's next generation map database, leading the way to smarter mobility. Mappy is licensing TomTom map and traffic information to power its Internet mapping site and mobile consumer app via app stores. Mappy leverages traffic information from TomTom when calculating a route. **Bruno Dachary, COO of Mappy** comments, "Our customers rely on dynamic advice for their route planning. By extending our relationship with TomTom, having access to live traffic information displaying incidents and congestion on a map, assures that we are meeting our customers' mobility needs." www.tomtom.com fr.mappy.com

/// purchased.imploring.partaken
Utulei, Tonga



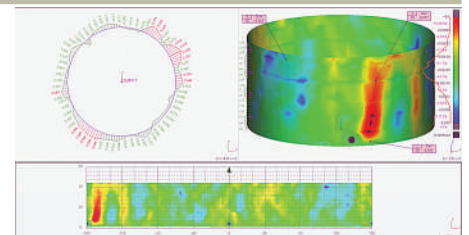
TONGA ADOPTS WHAT3WORDS AS NATIONAL POSTAL ADDRESSING SYSTEM

what3words has been adopted as an addressing standard by **Tonga Post**. The Kingdom of Tonga is the first nation in the region, and the fourth in the world to adopt 3 word addresses to improve its national infrastructure. With 170 islands scattered over 700,000 square kilometres of ocean, delivering anything to anyone is a challenge. 36 of Tonga's islands are inhabited, with a population of approximately 103,000 citizens. By using what3words, every location in the

Kingdom of Tonga now has an instant address. what3words provides an easy-to-use, accurate, and fixed address for every 3m x 3m square in the world. By making this addressing system part of the country's infrastructure, Tonga Post is helping unlock the region's economic growth and social development. Using 3 word addresses for Tonga's Postal system is both practical and user friendly for residents, as well as time and cost efficient for the company. www.what3words.com

3DRESHAPER PLUGIN DEDICATED TO TANKS ANALYSIS

3D scanners are being used more often to analyse storage tanks and inspect their integrity because they allow the fast and accurate acquisition of a large amount of data. The new **2016 MR1** version of **3DReshaper** has an optional module dedicated to tank analysis and processing. The tank inspection plugin allows users to inspect plumbness, create 3D inspections to detect possible problem areas on the tank by creating a 3D colormap to highlight problem areas. This map can be unrolled and displayed as a 2D colormap. It can evaluate roundness and verticality by creating section cuts of the tank and displays the different sections with exaggerated deviations



to allow users to detect the slightest anomaly. Also can compute the differential settlement or localized settlement on the bottom of the tank according to API 653 standard tolerances. Finally, complete reports can be generated at the end of the analysis. www.3dreshaper.com

AIRBUS PROVIDES SATCOM FOR EU SECURITY MISSIONS IN MALI, NIGER AND SOMALIA

Airbus Defence and Space delivers satellite communications systems for EU military training missions in **Somalia** (EUTM Somalia) as well as for the EUCAP (European Union capacity-building mission) Sahel **Niger** and EUCAP Sahel **Mali** civilian missions. Led on behalf of the European Union, these missions aim to support the efforts of the respective governments to strengthen their stability and to respond to the security issues faced by their populations. Airbus Defence and Space teams have deployed C-band satcom systems between Europe and Somalia, Niger and Mali, as well as satellite-based mobile phone terminals to enable communications in Malian and Nigerien territories. Airbus Defence and Space supplies the ground equipment,



communications services and airtime. Around twenty ministries of defence in Europe and EU organisations are taking part in this project, which allows them to equip themselves with satcom solutions and services across the globe. www.airbusdefenceandspace.com

GROUND TRIALS OF VOLCANIC ASH DETECTION PERFORMED SUCCESSFULLY

Elbit Systems and **Nicarnica Aviation** achieved a significant milestone by successfully performing ground trials, demonstrating detection of volcanic ash using the **ClearVision EVS** system. The **Enhanced Vision System (EVS)**, that was modified to incorporate ash detection capability, is one of a kind in the market. During the conducted trials, the system demonstrated unprecedented volcanic ash detection capability. The trial findings verify that the final product will achieve a

successful detection at a range of 100 kilometres in sufficient time to allow pilots to avoid the no-fly zone affected by the presence of volcanic ash. The ground-breaking modified design was funded by the Eurostars™ program. Elbit Systems and Nicarnica's technologies enhance operational efficiency, reduce maintenance costs and prevent delays in the flight schedules of commercial airlines caused by adverse ambient flight conditions.

www.elbitsystems.com



DIAMOND AIRCRAFT INTRODUCES NEW GARMIN G1000 NXI FLIGHT DECK

Diamond Aircraft Industries introduces the next generation **Garmin G1000 NXi** integrated flight deck to its piston product line, including the twin-engine DA62 and DA42-VI/DA42 NG and the single-engine DA40 NG. "We are excited to present the all-new Garmin G1000 NXi to our state-of-the-art piston aircraft. In 2001, we were the first OEM to commit to Garmin's then top-secret fully integrated G1000,

selected as an integral key part of the DA42 TWINSTAR and we are happy to offer our customers the latest in avionics yet again," says **Christian Dries, CEO and Owner Diamond Aircraft Austria**. Garmin NXi uses the same basic user interface of the G1000 boasting a number of big improvements further reducing pilot workload and enhancing the flight experience.

www.diamond-air.at



RIEGL VZ-400i

Ultra High Performance 3D Laser Scanner



1 operator – 8 hours

500+ scan positions

high-accuracy scan data

Historic Downtown Vienna preserved with RIEGL VZ-400i

Farther, Faster, Better:
The RIEGL VZ-400i is Redefining Productivity!

This evolution of laser scan engine technology is based on its new innovative processing architecture. Real-time data flow is enabled through dual processing platforms: a dedicated processing system for data acquisition, waveform processing and system operations, and a second processing platform to execute on-board data registration, geo-referencing, and analysis simultaneously. Thus, the new VZ-400i is an extremely fast field-to-office Terrestrial Laser Scanning Solution, setting the benchmark in 3D Laser Scanning, again!

Ultra High Speed Data Acquisition with **1.2 MHz laser pulse repetition rate** combined with up to **240 lines/sec scan speed** | up to **800 m range** | survey-grade **accuracy 5 mm** | highly informative scan data attributes | on-board registration with GPS and orientation sensors | Cloud Connectivity via Wi-Fi and LTE 4G/3G | user friendly touchscreen interface | pre-defined workflows for easy operation | advanced flexibility through support for external peripherals and accessories | high end camera option

SPAR3D
EXPO & CONFERENCE
Houston, Texas
April 3 - 5, 2017
Visit us at booth no. 5

Scan this QR code to watch the RIEGL VZ-400i video.
www.riegl.com



NEW PROJECT TO BOOST SAT NAV POSITIONING ACCURACY ANYWHERE IN WORLD

The service, to be developed at prototype level, will benefit safety-critical industries like aviation and maritime navigation, as well as high accuracy dependent applications such as offshore drilling and production operations, dredging, construction, agriculture and driverless cars and drones, just to name a few.

The **EU-funded TREASURE** project, will integrate signals from satellite navigation systems such as GPS, launched by the US, alongside Russia's GLONASS, China's BeiDou and Europe's new Galileo system. Combining these different satellite systems to operate together is a new development known as multi-GNSS, which is key to provide instantaneous, high accuracy positioning anywhere in the world. The four-year project will focus on a service that will take the current use of GNSS - normally based on just one or two systems - to the next level, to provide accuracy of a few centimetres in real time, opening up a multitude of new possibilities. www.nottingham.ac.uk

SUCCESSFUL INITIAL LAUNCH FOR ITS SECOND GENERATION REAL-TIME CONSTELLATION

exactEarth Ltd. announced the successful launch of four hosted payloads for its next generation constellation, **exactView™ RT** powered by **Harris**. Launched aboard an **Iridium NEXT satellite** on **SpaceX's Falcon 9** rocket from Vandenberg Air Force Base in California, these hosted maritime payloads are now being commissioned and are expected to be brought into service shortly. **exactView RT** will offer for the first time a continuous, global real-time ship tracking capability, providing an unprecedented view of the world's maritime domain to **exactEarth** customers. Designed to provide significant improvements to current and future customers, the RT satellites will deliver best-in-class vessel detection rates as well as instantaneous downlinking of AIS information. This will enable average global revisit rates of under one minute with the Company's customers receiving data in real time. **exactView RT** will consist of more than 60 payloads aboard the **Iridium NEXT** constellation, scheduled for completion in 2018.

www.exactearth.com



PAKISTAN GOVERNMENT CHOOSES FUGRO FOR EXTENSIVE MINERALS EXPLORATION

Fugro has been awarded a multi-million Euro contract for the exploration of minerals in Pakistan. The world's leading independent geo-intelligence provider will plan and supervise exploration of areas of the Punjab – Pakistan's second largest province and the country's most populated region – for iron ore and other minerals. The two-year survey has been commissioned by the **Punjab Mineral Company (PMC)** and the exploration programme will include geophysics,

geotechnics, hydrology, drilling and laboratory testing as well as quality and budget control. The programme will culminate in a detailed estimation report of metal deposits in Punjab. The €10m contract with **Fugro** was signed in Lahore in January. Addressing the signing ceremony, Punjab's Chief Minister, Muhammad Shahbaz Sharif, called the exploration project a 'progressive initiative'. He added that the survey would reveal authentic data on the Punjab's mineral reserves. www.fugro.com

ENABLING A BREAKTHROUGH IN HYBRID UNDERWATER VEHICLES

The Fusion is a breakthrough in hybrid underwater vehicles. In a unique way, it combines AUV and ROV capabilities with diver navigation and propulsion- into just one system. Crafty engineering and high-end bespoke sensors have produced an underwater vehicle with efficient, capable and robust design. The **Fusion** underwater vehicle has a unique in-line transducer arrangement and **Nortek** has been there to help with this design. **Nortek's** contributions included recommendations and minor tweaks to make the vehicle work optimally. The **Fusion** breaks with tradition by uniquely combining several underwater systems into a single platform. The specific suite of sensors refers to inclusion of a multi-beam forward-looking sonar, side-scan sonar, USBL,



DVL and AHRS. Most other platforms do not include these as standard and are certainly not integrated as tightly as in **Fusion**. This design makes the **Fusion** more efficient, capable and cost effective. www.nortek-as.com

ABP CHOOSES OCEANWISE PORT-LOG

Associated British Ports (ABP) has contracted **OceanWise** to install **Port-Log** across all of ABP's 21 UK ports. The project has not required any of ABP's existing sensors to be replaced. A major benefit of **Port-Log.net** is its ability to accommodate a wide range of sensors from different manufacturers. Consequently, pressing deadlines for installing and testing the system were able to be met. The service utilises **OceanWise's** Smart Telemetry units to transmit data to a

cloud server, providing real-time publishing of monitoring data direct to individual VTS centres at each Port Cluster, as well as to other users and devices at other locations. ABP opted for the **OceanWise** online (aka cloud based) subscription service, **Port-Log.net**, which offers great value and is quick and easy to set up. This enabled an on time go-live date for the Port of Southampton, with the other Ports following on smoothly. www.oceanwise.eu