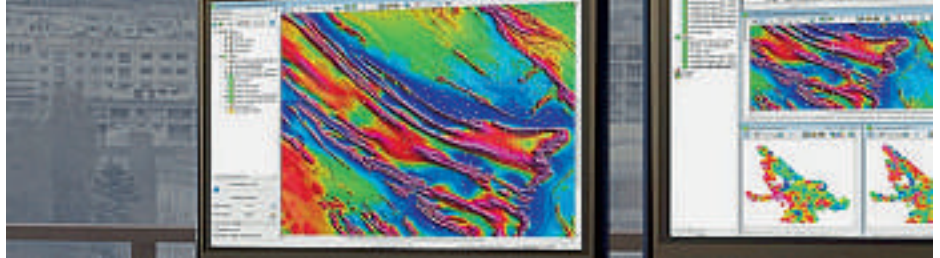


## URTHECAST AND ESRI PARTNER IN BRINGING IMAGERY TO LIFE IN ARCGIS

**UrtheCast Corp.** and its subsidiary, the Earth Observation company **Deimos Imaging**, announced a broad partnership with Esri, starting with a new UrtheCast imagery service, which is powered by **Esri: Kanvas**. The service will enable all Esri users to access timely, reliable and quality assured imagery, directly into their apps and desktops. The on-the-fly imagery service curated by Deimos imaging, is a precursor to the upcoming UrtheDaily™ constellation which is expected to image the entire Earth daily at 5m resolution, complimenting Sentinel-2 and Landsat applications. Anyone with the ArcGIS platform will have access to the multi-season time series of medium and very-high resolution satellite imagery, over the whole of Spain and California. Hosted in Amazon Web Services using ArcGIS, Esri users can utilise the multi-temporal imagery service and start building valuable apps for monitoring, change detection, precision insights and more. [www.urthecast.com](http://www.urthecast.com)

## ESRI AND HERE SIGN MULTI-YEAR MAP DATA LICENSING AGREEMENT

Users of **ArcGIS** can now take advantage of a wide range of map data from **HERE Technologies**, following a new multi-year licensing agreement between the two companies. The agreement means ArcGIS users have access to global, accurate and fresh geospatial content, including dozens of new and rich map attributes. The expanded set of attributes will enhance core ArcGIS capabilities of mapping, geocoding, routing and spatial analysis, allowing ArcGIS users to consume these enhanced capabilities in their ArcGIS applications and, at the same time, allow partners and developers to create new and innovative solutions. Esri is also integrating HERE's historical, real-time and predictive traffic data into the ArcGIS platform. These data streams can serve as a powerful asset in everything from deciding where to build a new road, to developing services for which accurate ETA calculations are critical. [www.here.com](http://www.here.com)



# GEOSOFT ANNOUNCES NEW SUBSCRIPTION PLANS FOR ITS OASIS MONTAJ SUITE OF GEOSCIENCE SOFTWARE

**Geosoft** has announced new subscription plans for its **Oasis montaj** suite of geoscience software with options that include monthly, annual and multi-year terms. This follows the company's introduction, earlier this year, of subscription plans for its Target geology software. The new Oasis montaj Essentials Subscription provides cost-effective access to a powerful suite of 3D modelling and geoscience data analysis tools for exploring near surface, subsurface and marine environments. Subscribers can add more capabilities with

over 15 geoscience extensions for geology and geochemistry; geophysical processing, interpretation and modelling; and specialized toolsets for Unexploded Ordnance (UXO) detection and analysis. **Troy Wilson, Geosoft Senior Director of Strategy and Business Development** said, "With the new subscription plans and bundling options customers can easily scale software use based on their business requirements - adding more subscribers, or more tools, as their team and project needs change." [www.geosoft.com](http://www.geosoft.com)

## PARAGON ENHANCES ROUTING AND SCHEDULING SOFTWARE WITH FUEL USAGE

**Paragon** has launched a fuel usage enhancement to its routing and scheduling software that will enable logistics operations to accurately compare planned versus actual levels of consumption leading to greater fuel savings. This latest update to Paragon's Route Execution module means fuel data can be taken directly from an approved, **CANbus-integrated vehicle tracking system** and analysed against predicted consumption figures, calculated during the planning process, to identify where route planning can be improved. Transport managers will be able to use the added insight to give immediate fuel efficiency feedback to

drivers as well as generate bespoke usage reports, based on credible data, for relevant stakeholders



within the business. This will provide greater visibility and understanding of where excessive consumption is occurring within a fleet and what action can be taken to help drivers reduce fuel costs and the associated carbon emissions. [www.paragonrouting.com](http://www.paragonrouting.com)

## HURON GEOMATICS INC. ACQUIRES OPTECH MAVERICK MOBILE MAPPING SYSTEM

**Teledyne Optech** announced that **Huron Geomatics Inc.** (HGI) has acquired an **Optech Maverick** mobile mapping system that will greatly support the expansion of the company's operations. The Maverick sets a high bar for size, portability and versatility in mobile asset mapping. Weighing less than 9 kg, the Maverick integrates a LiDAR, 360° camera, and an INS into an extremely small form factor that is easy to install, while maintaining the data quality that users expect from a Teledyne Optech system. **Wayne Szameitat, Teledyne Optech's International Sales Manager** said, "We are very happy that HGI has chosen to

add the Optech Maverick to their surveying toolset."

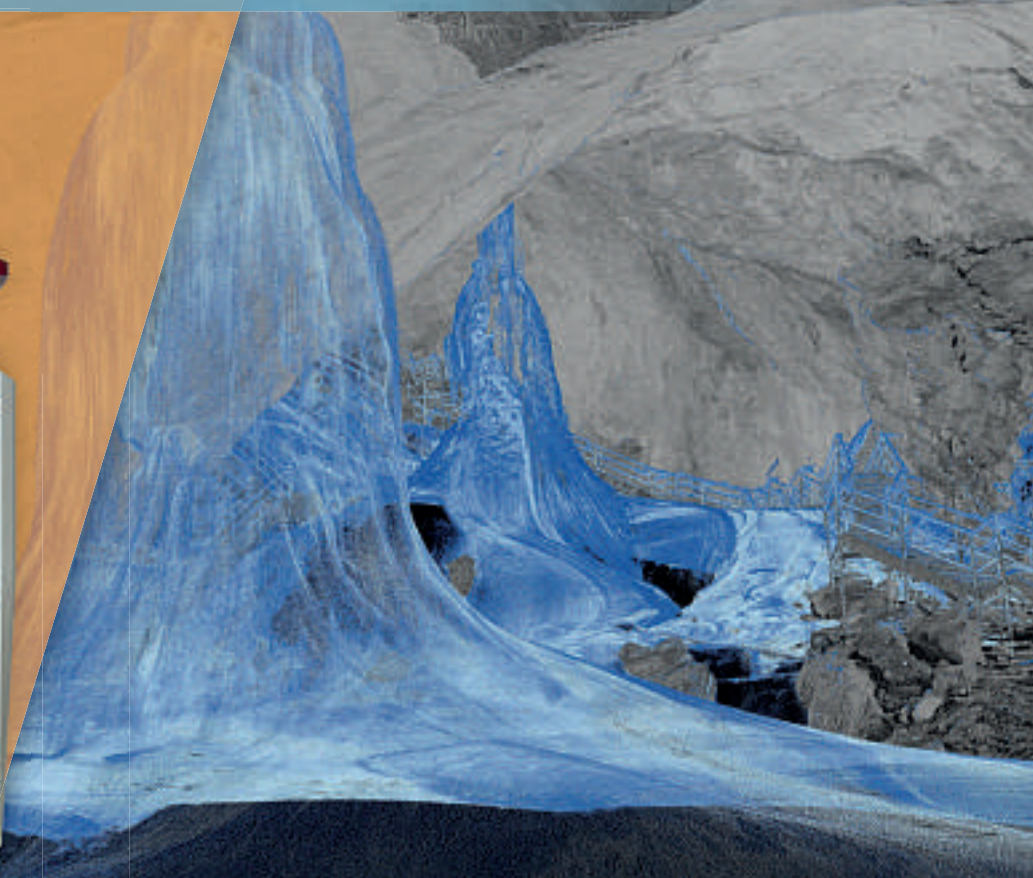


**Doug Culbert, General Manager at Huron** said, "The Optech Maverick is a unique tool that will allow us to give our clients quick and reliable data with a myriad of applications to manage their assets." [www.teledyneoptech.com](http://www.teledyneoptech.com) [www.hurongeomatics.com](http://www.hurongeomatics.com)



# RIEGL VZ-400i

## Ultra High Performance 3D Laser Scanner



World's largest glacial cave in Werfen/Austria:  
Measurement data colored by reflectance for surface material detection  
(here: blue - ice)

**Proven in the Field:  
Extremely Fast Data Acquisition,  
Automatic On-Board Registration, User Friendly!**

- » **NEW** Automatic registration during data acquisition – **Tremendous time savings!**
- » Up to 1.2 million measurements/sec – **Extremely fast data acquisition!**
- » RIEGL Waveform-LiDAR technology – **Highly informative and precise data!**
- » Cloud connectivity via LAN, Wi-Fi and LTE 4G/3G  
– **Worldwide access for smart remote scanner control and data upload!**
- » Customizable workflows – **High field efficiency!**
- » User-friendly touch screen – **Easy to operate!**

Visit us at

### INTERGEO®

GLOBAL HUB OF THE  
GEOSPATIAL COMMUNITY

BERLIN 2017  
26 – 28 SEPTEMBER

**RIEGL booth C4.032 in Hall 4.1**



RIEGL VZ-400i  
videos on our  
YouTube Channel  
online!



[www.riegl.com](http://www.riegl.com)



# RIEGL®

## REMOTE GEO LINEVISION ESRI MARKETPLACE AVAILABILITY

Remote GeoSystems is pleased to announce the availability of the company's **LineVision™ Esri®** applications in the **ArcGIS Marketplace** with access to **ArcGIS Online** content. The **LineVision ArcMap Add-in** and stand-alone **LineVision Esri Maps** are commercial software tools for UAV, airborne and terrestrial mobile inspection and survey projects requiring georeferenced video playback, analysis, collaboration and reporting using the Esri ArcGIS platform. "Remote Geo has developed a global reputation as the go-to source for ubiquitous GIS video mapping hardware and software, and we are excited to now offer their LineVision Esri apps in the ArcGIS Marketplace," says **Esri's Startup Program Manager, Kurt Daradics**. "This gives both the traditional and non-traditional GIS user the ability to easily leverage geospatial video and other inspection data with ArcGIS Online content and ArcGIS Desktop tools." [www.remotageo.com](http://www.remotageo.com)

## MAJORITY OF DRONE OWNERS WELCOME FLYING EXAM

ALMOST two-thirds of drone owners would welcome compulsory flying exams similar to Government proposed assessments, according to new research. **The Drone Usage Report 2017** compiled by **DronesDirect.co.uk** revealed 61% of drone owners would welcome a compulsory flying exam before taking to the skies with their gadget as they think it would increase public safety. The news comes as the UK Government has announced plans to introduce mandatory safety awareness courses and registration for owners of small unmanned aircraft, including drones. More than half (56%) of drone owners are confident in their piloting skills and think they would pass a flying exam if they had to sit one before doing so alone. While the vast majority of users (65%) also say they would be willing to have their drone electronically registered to make it easier to identify the owner if the gadget was lost or stolen. [www.DronesDirect.co.uk](http://www.DronesDirect.co.uk)



# SEAGULL™, ELBIT SYSTEMS' MULTI-MISSION UNMANNED SURFACE VESSEL (USV) SYSTEM

**Seagull, Elbit Systems'** ground-breaking **Multi-Mission USV**, participated in the bi-national MCM trials for unmanned maritime systems that were organized by the Directorate General of Material Resources (DGMR) of the **Belgian Defence Ministry**. Taking part in the trials conducted at the beginning of June off the Belgian Zeebrugge Naval Base, were several companies operating different types of unmanned underwater and surface vehicles. Seagull provides multi-mission capabilities including Anti-Submarine

Warfare (ASW), Mine Hunting & Mine Sweeping (MCM), Electronic Warfare (EW), maritime security and underwater commercial missions, leveraging modular mission system installation and offering a high level of autonomy. It features inherent C4I capabilities for enhanced situation awareness and mission endurance of more than four days. Elbit Systems displayed Seagull's quick mission ready capabilities in an unfamiliar setup, and completing all tasks in just a few hours. [www.elbitsystems.com](http://www.elbitsystems.com)

## DMT EXPLORES SUBSOIL IN THE DEAD SEA

The world's 8th largest potash producer, the Jordanian firm **Arab Potash Company Ltd.**, is engaging the services of the German engineering and exploration company **DMT** for a ground survey at the **Dead Sea**. In the Jordanian part of the sea, in the south-eastern area, depths, reliefs and coastal lines are to be mapped. In addition the layers and sediments below the seabed will be explored and characterized. The aim of this geophysical ground survey is to create a subsurface model for a planned pumping station, which will transport water from the Dead Sea to the potash production plant. "This highly

demanding and interesting project supports DMT's strategy to expand our business activities in this region," explains **Prof. Eiko Räkens, CEO**. The survey will be carried out over a period of 2 to 3 months. [www.dmt-group.com](http://www.dmt-group.com)



## MAXOPTRA HELPS MERCEDES-BENZ DEALERSHIP MAKE PARTS DELIVERIES SMART

**Maxoptra's** dynamic multi-drop route planning software is helping **Sandown Mercedes-Benz** plan and complete deliveries of spare parts to garages across the south of England. Operating from a centralised hub in Basingstoke, the Mercedes-Benz dealership offers trade customers two deliveries a day and

completes in excess of 1,000 deliveries a week. Integrated with in-cab navigation devices from TomTom, the Maxoptra cloud-based multi-drop planning solution is already saving Sandown time and money whilst improving customer service. **Charlotte Grummitt, Key Account Manager at Sandown Mercedes-Benz** commented. "Since implementing Maxoptra, we have reduced the time taken to plan our daily deliveries and reduced the time taken to complete the delivery schedule. We wanted a solution that could look at the resource we had and tell us how best to use it, and Maxoptra does exactly that" [www.maxoptra.com](http://www.maxoptra.com)





### City of Coatesville Brownfield Redevelopment Project

Site revitalization project leveraged reality modeling to prepare plans for future commercial development and to quantify 22,400 cubic yard of available clean fill.

- » 750 aerial photos in 20 minutes
- » 3D engineering-ready model in 8 hours
- » Final engineered plan in 3 days

“ContextCapture has changed the way we work. It helped us reduce risk, ensure safety, and deliver a superior project result. And, we accomplished it all with a dramatically compressed timeline and with significant cost savings.”

*April M. Barkasi, PE, Coatesville's  
City Engineer, CEO/President,  
CEDARVILLE Engineering*

**Visit the Bentley exhibit  
at INTERGEO**

Stand: B2.008 Hall: 2.1

## High Fidelity, Engineering Ready Reality Context

### ContextCapture Saved the City of Coatesville \$300,000

With ContextCapture, you can quickly and automatically generate a *high fidelity* geo-referenced 3D model from ordinary digital photography captured from UAVs, vehicles, or handheld smartphones. The resulting 3D mesh is precise and extremely accurate, *available within hours* for the most demanding projects. The model is engineering ready and does not require any further processing, translation, or manipulation.



To learn more and try it out yourself visit [www.bentley.com/CoatesvilleFidelity](http://www.bentley.com/CoatesvilleFidelity)

## GLOBAL MAPPER SDK AND LIDAR MODULE SDK V18.2 RELEASED

Blue Marble Geographics is pleased to announce the immediate availability of version 18.2 of the **Global Mapper Software Development Kit (SDK)** along with the **Global Mapper LiDAR Module SDK**. Released in conjunction with the desktop version of the application, this powerful developer's toolkit shares many of the software's functional enhancements and performance improvements. Some of the highlights of the 18.2 release include support for Amazon's cloud-based Simple Storage Service; 3D fly-through improvements; hydro-flattening for LiDAR data; and improved lighting display for vector features and models in the 3D Viewer. For over two decades, Blue Marble's affordable, user-friendly GIS software has been meeting the needs of hundreds of thousands of satisfied customers throughout the world. Users come from all industries including software, oil and gas, mining, civil engineering, surveying, and technology companies, as well as government departments and academic institutions. [www.bluemarblegeo.com](http://www.bluemarblegeo.com)

## ORBIT GT AND LEHMANN+PARTNER, GERMANY, SIGN RESELLER AGREEMENT

Orbit GT is happy to announce that **Lehmann+Partner**, Germany, has joined as Authorized Reseller of Orbit GT Mobile Mapping products. "We're very pleased to join with Lehmann+Partner as our new Reseller", says **Peter Bonne, CEO of Orbit GT**. "Lehmann+Partner is a well known and respected company in Germany and beyond. We're looking forward to a great co-operation and take services and solutions to our joint customers to a next level." **Alexander Bock of Lehmann+Partner** adds: "We provide services and equipment for infrastructure management all over the Globe and Orbit GT solutions meet our requirements perfectly. With this partnership we are able to bring our ideas forward and strengthen our existing portfolio." [www.orbitgt.com](http://www.orbitgt.com)

# NEW RAF TRAINER IS 'READY TO FLY'

**Affinity Flying Training Services** is delighted to announce that the **Grob 120TP, 'The Prefect'**, has achieved Military Release to Service and is a step closer to commencing its role as the next Elementary Flying Training aircraft for the UK Ministry of Defence. The Prefect is the first of a suite of new training aircraft due to enter service from 2017, which will support the Fixed Wing element of the UK Military Flying Training System programme. Specifically designed for training ab-initio students, the Prefect boasts a G-range of +6/-4, and a top speed of 235kts. Equipped with a fully digital cockpit, it is EASA certified

for day, night and full IMC operations. The Prefect, which will be based at RAF Cranwell, is one of a total of 18 aircraft that will be delivered under the programme this year.

[www.AffinityFTS.co.uk](http://www.AffinityFTS.co.uk)



## MAPTITUDE NOW HAS 2 MILLION NEW ZEALAND ADDRESS POINTS

Address data in New Zealand continues to boost the economy because of shrewd moves by the New Zealand government. Initiatives under the Business Growth Agenda and the Open Government Partnership are making public data more available for the benefit of everyone in New Zealand. With precedent in only a few countries these "open data" initiatives provide significant boosts to the host economy. By integrating the now freely available **Address Information Management System (AIMS)** addresses into **Maptitude**, the value of the mapping software is even more unassailable and empowers even non-techie users with map aptitude. When you know where every single address in the country is, the possibilities for

geospatial analysis are limitless. When you have direct access to this data for visualization, research, and address matching, then you will be empowered to achieve what would otherwise require a significant investment and a specialized education.

[www.caliper.com](http://www.caliper.com)



## BLUESKY LAUNCHES NATIONWIDE MAP OF BUILDING HEIGHTS



**Bluesky** has launched the first nationwide map providing accurate height measurement for around 40 million buildings. Created from a combination of remote sensing surveys, including data from aircraft mounted lasers (LiDAR), the Bluesky Heighted Building dataset covers the whole of England, Wales and Scotland, and will help to change the

way we visualise and understand the built environment. By applying height values to 41,083,111 buildings, Bluesky is giving planners, developers, local government, utility companies and the emergency services a brand new perspective. Including multiple values for every residential, leisure, retail, commercial and industrial structure in mainland UK, the Bluesky Heighted Building dataset will provide new intelligence to underpin decision making and service delivery. The **Bluesky Heighted Building** dataset is based on and compatible with the **Ordnance Survey's MasterMap (OSMM)** product range and can be packaged with the original OSMM building polygons or supplied as standalone attributes.

[www.bluesky-world.com](http://www.bluesky-world.com)

## DFS LAUNCHES FREE APP TO SUPPORT SAFE DRONE FLIGHTS

German aviation authority **DFS**, together with its Belgian technology partner **Unifyfly**, has developed the "DFS drones app" to increase safety in uncontrolled airspace. The German speaking app provides drone pilots with an interactive map for each location in a simple, comprehensive and reliable manner, showing in which areas drones can safely and legally take off and where restrictions and prohibitions exist. Areas and facilities that are not allowed to be flown over are displayed

clearly and individually. Besides obvious location such as airfields and other protected airspaces, this includes hospitals, industrial and energy installations, police and military facilities as well as waterways and highways, railways and nature reserves. The DFS app takes the new air traffic regulations (Drones Ordinance) of April 2017 into account. The free app is available for both iOS and Android devices in the Apple App Store and Google Play Store. [www.dfs.de](http://www.dfs.de) [www.unifyfly.aero](http://www.unifyfly.aero)



## VIVA ESPAÑA: PTV GROUP STARTS UP IN SPAIN

PTV is continuing its global expansion and has now opened its first office in **Spain**. An important current project is the partnership with the "**Cooperative Automotive Research Network**" (**CARNET**) – with the goal of closing the gap between the automobile industry and urban mobility. In the newly-created PTV Spanish branch office in Barcelona, the PTV mobility experts for both traffic and logistics planning and optimization will support local customers and partners. PTV will also recruit locally

and augment its existing team of experts with local expertise and undoubted talent. Customers will profit from Spanish speaking PTV software experts being close to hand and truly localized customer support and after sales services. In recent years, PTV has intensified its activities in Spain and increasingly deployed partners and direct employees in the region. Many companies are already taking advantage of the company's expertise in traffic optimization and transport logistics. [www.ptvgroup.com](http://www.ptvgroup.com)



## ARROW SERIES HIGH PRECISION GNSS RECEIVERS for every mobile device

### ARROW GOLD



1 cm RTK  
with SafeRTK™  
& Atlas

### ARROW 200



1 cm RTK

### ARROW 100



Submeter  
& Subfoot GNSS

### ARROW LITE



Submeter GPS

40-60cm with EGNOS and all SBAS  
1cm real-time RTK accuracy  
iOS/Android/Windows compatibility  
GPS/GLONASS/BeiDou/Galileo/QZSS

## MICASENSE ATLAS IS NOW INTEGRATED INTO PIX4D DESKTOP SOFTWARE

BLUE  
This partnership will offer MicaSense customers the power of desktop processing, as well as the flexibility of MicaSense Atlas. "Our customers value Atlas as an analytics and collaboration platform," says **Gabriel Torres, CEO of MicaSense**. "They also tell us that processing data locally is important to them and their operations. By combining the processing capability of Pix4D's software with the power of the MicaSense Atlas analytics, we provide a solution that optimally fulfills these needs." With the new "Upload to Atlas" feature, users can share the processed results with MicaSense Atlas directly from the Pix4D user interface. **Jorge Fernandez, Solution Manager for Agriculture at Pix4D** says: "Pix4D's agricultural focus has always been to provide the most radiometrically and geometrically accurate results possible. We are happy to open this up to MicaSense Atlas users. This new button simplifies everything for them, we are really excited to make this happen."  
[www.pix4d.com](http://www.pix4d.com)  
[www.micasense.com](http://www.micasense.com)

## SKYLINE SOFTWARE SYSTEMS RELEASES TERRAEXPLORER FOR WEB V7.0

Skyline Software Systems Inc. has released TerraExplorer for Web v7, a lightweight 3D geographical information system, or GIS, viewer that enables the user to view high-resolution, stunningly realistic SkylineGlobe 3D content in a web browser, without any plugins. This latest version offers a simple, no-download, no-installation solution for online viewing and analysis of 3D environments. Building on standard Cesium support for imagery, elevation and KML layers, TerraExplorer for Web can display most spatial databases including 3D city layers (3DML/3D Tiles) and feature layers (WFS). TerraExplorer for Web integrates smoothly with the entire Skyline product line for easy access to data – from photo-realistic, geographically accurate terrain databases created in TerrainBuilder to PhotoMesh's automated high-resolution, textured, 3D mesh models created from photographs, video and other sensors. Based on HTML5/WebGL standards, TerraExplorer for Web provides support for multiple platforms and browsers (Windows, Mac, Linux and more).  
[www.skylineglobe.com](http://www.skylineglobe.com)



# SEAROBOTICS RECEIVES CONTRACT FOR AUTONOMOUS HYDROGRAPHIC SURVEY VEHICLES

**SeaRobotics Corporation** (SeaRobotics) has delivered two complete autonomous 2.5m unmanned surface vehicles (USVs) to a government hydrographic service. These USVs, built by SeaRobotics, are complete hydrographic systems, including multibeam echo sounders, support sensors, a cast winch, deployment carts, and road trailers. This contract reinforces the commitment government and commercial entities are making to take unmanned surface vehicles out of the laboratory and research environment and integrate them into the world

of professional surveyors. The efficiency and cost effectiveness of each application will be reviewed, and a profile of high-productivity, cost-reducing activities will be developed. Both traditional survey tasks and previously denied areas that remain unsurveyed will be evaluated. This system leverages SeaRobotics' extensive expertise and history delivering USVs for high-precision bathymetric surveys, water quality analysis, hydrographic surveys, and many other applications.

[www.searobotics.com](http://www.searobotics.com)

## OKEANUS SCIENCE & TECHNOLOGY ACQUIRES DT MARINE PRODUCTS

**Okeanus Science & Technology, LLC** (Okeanus) has acquired the business assets of **DT Marine Products, Inc.** (DT Marine) of Houston, TX. This acquisition will allow Okeanus to offer for sale or rental DT's full catalogue of marine and oceanographic winches to customers around the world. The acquisition will also give Okeanus a new presence in Houston, expanding the company's capabilities in the Gulf of Mexico region and complementing its existing offices in Houma, LA and Redmond, WA. **Darrell Troville, President and CEO of DT Marine** said "The combination of our manufacturing capabilities with Okeanus's Redmond-based engineered solutions team

will allow us to offer a complete range of competitively priced custom and standard products." **Okeanus CEO, Ted Brockett** said "The addition of DT Marine to the Okeanus family is exciting as it adds to our product portfolio a proven line of dependable, industry-accepted winches." [www.okeanus.com](http://www.okeanus.com)



## BENTLEY ACADEMIC PROGRAM SUBSCRIBED BY ETSICCP OF MADRID

Through **Recursos Técnicos Madrid, S.L. (RTM), Escuela Técnica Superior de Ingenieros de Caminos, Canales y Puertos (ETSICCP)** in Madrid has signed the new "Programa Académico de Bentley Institute" for the incoming course 2017-2018. This program includes "STUDENTserver" in order to provide professors and pupils with over the 60 most recent Bentley software applications. **RTM-Bentley** supply as many access codes as they need to provide the start up of any of the Bentley products downloaded and installed. Every logged pupil will be able to access the

information about on line courses "On-Demand" and "Live". RTM will supply a continuous assistance to the School as they have been doing to other centres with whom they have participated in with the subscription of the Academic Program by Bentley Institute.

[www.rtm.es](http://www.rtm.es)



## GAF AG SIGNS DISTRIBUTION PARTNERSHIP WITH PLANET

**GAF's GEO-Information experts** have now signed up Planet, one of the global leading providers of high frequent **Earth Observation** data to extend GAF's multisource satellite data and service portfolio for a new quality of timely observations. GAF customers in Germany, Europe and worldwide can now access Planet's substantial portfolio of optical satellite data, as well as derived value-added products, through a new partnership. According to **GAF's CEO, Dr. Peter Volk**, important domains like Defence, Security, Insurance and Agriculture will benefit from this unmatched imaging and data capacity made available by an experienced

service provider like GAF. With its current constellation of about 190 satellites, Planet can image the entire earth every day with 3-5 meters ground sampling distance (GSD) and offers RGB, RedEdge and NIR spectral bands. Planet products Planet Monitoring and Planet Basemaps are available through GAF using the Planet Platform or via Planet API.

[www.gaf.de](http://www.gaf.de)



## NIGERIA AFRICA'S LARGEST ECONOMY ADOPTS WHAT3WORDS ADDRESS TECHNOLOGY

Nigeria's postal service, **NIPOST**, has just announced its adoption of the innovative global addressing system **what3words**. Nigeria is Africa's largest economy and its most populous country with approximately 184 million inhabitants. Nigeria's poor addressing system means that only 20% of its inhabitants receive mail at home. Determined to improve this situation, NIPOST has set itself the ambitious target of increasing home delivery to 70% within the next 2 years and 90% by 2020 through the Mail for Every House Initiative (MEHI), and

has adopted what3words to help it achieve these goals. It means that



every home and business in Nigeria has a simple and accurate address that is easy to remember and to use. For example **///bracelets.hesitations.mutes** refers to the exact 3m x 3m square at the entrance to the main post office in Nigeria's capital, Abuja.

**hesitations.mutes** refers to the exact 3m x 3m square at the entrance to the main post office in Nigeria's capital, Abuja.

[www.what3words.com](http://www.what3words.com)

## PDF3D RELEASE PV+ 5.4 VISUALIZATION & PUBLISHING UPDATE

PDF3D have announced the latest release of their popular PV+, extending the award-winning **ParaView** application to convert the 3D visualizations generated by ParaView into 3D PDFs. PDF3D's latest PV+, based on Kitware's ParaView 5.4 visualization application features, reaches higher with a range of new visualization techniques, which are particularly useful for those working with CAE, Geophysical, and Geospatial data. **Ian Curington of PDF3D** explained, "The latest version of ParaView 5.4 provides rich and annotated visualizations, and takes advantage of current graphics hardware GPUs as well as software-only emulation when needed. The extended suite of plugins enable users to upload geospatial images, geological structures and geophysical mesh types that can then be converted to 3D PDF for easier archiving and sharing with others who don't have access to the ParaView app."

[www.pdf3d.com](http://www.pdf3d.com)

**SILICON SENSING**



## High Precision MEMS Inertial Sensors and Systems

Silicon Sensing offers a flexible toolkit for the discerning system designer – high precision **MEMS IMUs**, **gyroscopes** and **accelerometers** for all points on the price/performance curve.

- ⚙ High accuracy
- ⚙ Excellent bias instability
- ⚙ Evaluation kits, breakout boards and expert support available
- ⚙ Low output noise
- ⚙ Robust and reliable



[www.siliconsensing.com](http://www.siliconsensing.com)  
[sales@siliconsensing.com](mailto:sales@siliconsensing.com)

Visit us on the UK Pavilion at  
 Intergeo 2017