

### 3G VEHICLE CAMERAS CAN CUT PREMIUMS BY MORE THAN HALF

**First Insurance Solutions** is using 3G vehicle cameras to implement risk management that is reducing insurance premiums for its fleet clients by as much as 55% in some cases. The company uses **Intelligent Telematics'** industry-leading **IT1000** devices to help lower claim frequency, better defend fraudulent claims and improve driving styles. As a result, one London-based fleet has reduced its annual claims costs by 85% in year one of having them installed, resulting in a premium saving of almost £4,000 per vehicle. **Best Catering** was experiencing a high frequency of claims, which had a detrimental impact on the company's insurance premium, with over forty claims paid in a three-year period. However, Best Catering has experienced just six claims since installing the IT1000 3G vehicle cameras in January 2016, three of which are being challenged using video evidence and supporting data and less than £15,000 in paid and outstanding claims. [www.intelligent-telematics.co.uk](http://www.intelligent-telematics.co.uk)

### GPS REPEATER TECHNOLOGY ENSURES END-TO-END VISIBILITY OF CARGO IN TRANSIT

Every day, vast amounts of cargo are transported around the world by land, sea and air. One way to keep track of shipments as they make their way around the globe is by use of GPS-enabled tracking devices. Knowing the exact location of a highly valuable consignment would surely make any logistics professional sleep better at night. A tracking device can be fitted to almost anything, in an open or a covert way. While there are many options and variations on a theme, there are essentially two types of trackers – passive and active. **Passive trackers** use GPS location information to record their position. **Active trackers** provide real-time location and environmental information to a central tracking portal. When the shipment is delayed, for example by stormy weather at sea or by leaves on the railway line, the tracking data can be used to update clients with an accurate timeline. [www.gps-repeaters.com](http://www.gps-repeaters.com)



## DAIRY FARMERS TO BENEFIT FROM SATELLITE DATA

**Rezatec**, in conjunction with the **University of Reading**, is delivering its **PASQUAL** ("Monitoring and prediction of PASTure QUALity and productivity from satellites") project to develop an Earth Observation satellite based pasture farming intelligence tool. Through the analysis of multiple remote sensing satellite data sources (visible and radar) and meteorological data, in combination with the University of Reading's detailed modelling and data-assimilation techniques, the tool will enable dairy farmers to monitor and predict pasture productivity and quality. Trials are

currently being conducted by the University of Reading over a two-year period, initially at controlled research plots, and are now being extended to operational dairy farms. This approach is driving iterative development of models and data products, which will be delivered to users through Rezatec's geospatial web-portal platform. The platform will be upgraded and extended to support the required data streams and implement the bespoke grass growth models to create an innovative decision support tool for dairy farmers. [www.rezatec.com](http://www.rezatec.com)

### PARAGON ENHANCES ROUTE EXECUTION WITH VISIBILITY OF SUB-CONTRACTED VEHICLES

**Paragon** can now help logistics operations gain added visibility of sub-contracted loads through its advanced routing and scheduling software. Following enhancements to the company's Route Execution module, data can now be combined from as many as 35 different telematics systems, making it possible to see in real-time how third-party vehicles are performing against plan in addition to the in-house fleet. Using real-time tracking information, **Paragon's Route Execution** can now allow logistics operations

to monitor all schedules regardless of which vehicle is handling the deliveries, even if it is using a different telematics system to that of the in-house fleet. As a result, companies can achieve consistent levels of service across their entire operation, ensure customers are kept up to date regarding the status of orders and have a complete picture of on-time performance. This includes the ability to send automated notifications should expected arrival times change. [www.paragonrouting.com](http://www.paragonrouting.com)



**Leica Cyclone**  
A smarter way  
to view the world

# SMARTER

MODELLING FLEXIBILITY  
EFFICIENCY ANALYSIS  
SHARING PRODUCTIVITY



**Are you ready to view the world from a smarter perspective?**

Leica Cyclone brings a new dimension to construction mapping and surveying. Fuse the real and digital worlds to deliver smarter registration, visualisation and collaboration for enhanced efficiency, productivity and interaction.

**Explore more: [cyclone.leica-geosystems.com](http://cyclone.leica-geosystems.com)**

**Leica Cyclone**

Smarter Registration, Visualisation, Collaboration

Leica Geosystems AG  
[leica-geosystems.com](http://leica-geosystems.com)



©2017 Hexagon AB and/or its subsidiaries and affiliates.  
Leica Geosystems is part of Hexagon. All rights reserved.

PART OF  
**HEXAGON**

**Leica**  
**Geosystems**

## EFFICIENT MANAGEMENT OF LARGE PROCESS FACILITIES

The **NEOLANT Group of Companies**, which has been a partner of the **Hexagon Company** for many years, has released today its brand new software package – **InterStorage**, which expands the potential of **Intergraph SmartPlant Foundation** in the sphere of managing engineering data with help of navigation through complex 3D model integrated from various CAD/BIM/PLM formats. Usage of the single information model for a plant to review and obtain data provides crucial advantage in making managerial and engineering decisions throughout all stages of the facility lifecycle from design to operation, including renovation and retrofitting. Introduction of **InterStorage** in the **Intergraph SmartPlant Foundation** environment made it possible to create a tool for easy and timesaving operation with a complex 3D model. Due to its capabilities **SmartPlant Foundation** has been successfully used in solving operating tasks whilst making the customers greatly satisfied with the system as a whole. [www.neolant.com](http://www.neolant.com)

## GEOBLINK SELECTS HERE TO HELP THE RETAIL INDUSTRY

**Geoblink** is drawing on **HERE Technologies'** global database of places, to better understand consumers' real-world behaviour. Armed with location insights, **Geoblink** translates that data into valuable information for retailers looking to optimize their store portfolio and grow their reach with smart geomarketing. **HERE** continuously updates its **Places** data by drawing on thousands of different sources, including social media partners, and by applying machine learning to identify actual locations and remove irrelevant or duplicated information. Today, **HERE Places Extract** covers 79 million places, each accurately geocoded to the map. **Miguel García-San Román, Marketing Manager, Geoblink** says, "Data availability, granularity, and quality remains the number one challenge in leveraging the power of location intelligence. Our partnership with **HERE** helps us to tackle this challenge," **Eric Fumat, Vice President Sales, HERE Technologies** says, "We are delighted to work with one of the most promising companies in the Geospatial business intelligence industry." [www.here.com](http://www.here.com) [www.geoblink.com](http://www.geoblink.com)



## BRITISH DESIGNED 365M TOWER IS UNDERWAY

Construction of Istanbul's 356m high **Küçük Çamlıca TV Tower (KCTV)**, with facades devised by UK building engineering designers **Newtecnic**, has commenced. When the futuristic building is completed the £36m structure will be the city's tallest replacing several unsightly existing broadcast towers. As part of its work, **Newtecnic** developed an innovative facade concept that allows inhabitable spaces to be attached to the whole of the tower's core. The tower, which will host 125 broadcasting transmitters, is

expected to attract 4.5 million annual visitors and become a new city landmark. The design, which incorporates restaurants, exhibition and meeting spaces, two high-level observation decks and a panoramic elevator, was wind tunnel tested. This allowed **Newtecnic** to develop accurately sized facade components from the first stage studies. **Newtecnic CEO Andrew Watts** stated, "We are proud to see our work on dramatic and intriguing structures contributing prestige and value to UK export success." [www.newtecnic.com](http://www.newtecnic.com)

## COMPASSDRONE™ ANNOUNCES CIRRUAS DRONE PROGRAM FOR PUBLIC SAFETY AGENCIES

**CompassDrone** announced a comprehensive drone-based mapping program designed specifically for Public Safety applications. The **Complete Incident Response Recovery Unmanned Aerial System (CIRRUAS)** program is designed primarily for Accident Reconstruction and Crime Scene Mapping, but is also applicable to Search & Rescue and Reconnaissance missions. "CIRRUAS was designed by law enforcement for law enforcement to meet their unique mapping and data collection needs," said **CompassDrone**

**Vice President Hayden Howard**. "The result is a complete drone program comprising all the hardware, software and training they need to deploy drones in their daily operations. We designed CIRRUAS to make data collection safer, faster and more accurate for public safety officers," The CIRRUAS package contains everything needed for public safety personnel to quickly and accurately map an accident or crime scene for 3D reconstruction or evidence preservation purposes. [www.compassdrone.com](http://www.compassdrone.com)

## SURVEY HIGHLIGHTS COUNCILS' NEED TO ENCOURAGE ONLINE REPORTING

A new survey commissioned by technology company, **Yotta** gauging the public's views of council-run environmental services, highlights the need for local authorities to encourage residents to engage and report issues through online channels, while also making the case for new technologies that drive digital transformation. According to the survey, which polled the views of 1,000 UK adults, a fixed line phone call remains the most popular means of reporting a missed waste or recycling collection to the council. 41% of the sample said it was their preferred method. Just 28% would opt to visit the council website using a laptop or a PC while only 1% favoured using an app. "These

figures should give councils cause for concern," says **Steve White, software business development manager, Yotta**. "Environmental services including waste collections are among the biggest areas of interaction between the public and local councils." [www.yotta.co.uk](http://www.yotta.co.uk)



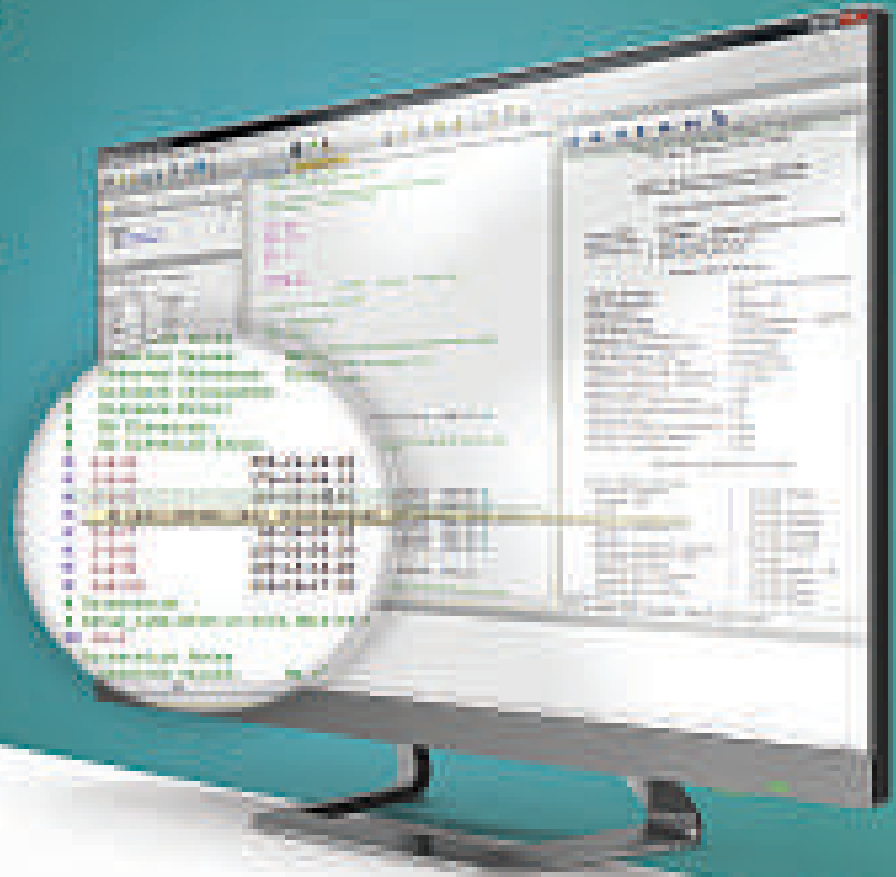
# The Best Just Got Better.

Least Squares Adjustment Software

See why the New STAR\*NET 9 is an absolute must have.

Now available as a true 64-bit program, STAR\*NET 9 has powerful new functionality including command auto-completion, context sensitive syntax tips, hyperlinked station names, inline error messages, column editing, and more!

MicroSurvey  
**STAR\*NET 9**



## NEW FEATURES

### • 64-Bit Version

The 64-bit version supports higher memory usage and faster execution.

### • Auto-Completion

Auto-Completion of inline station text to assist when manually entering data.

### • Inline Help Tips

Context-sensitive help tips appear when clicking on any data line.

### • Column Editing

STAR\*NET 9 now lets you select and type columns of text, to make multi-line edits spanning multiple lines of similarly formatted text.

### • Advanced Find

Advanced find of a station name now also works from the Data Editor.

### • Inline Error Messages

Error messages appear at the exact location of any errors when an adjustment is run, and can be jumped to directly from the Error Log.



Download your 15 day **FREE** Demo

Visit [www.microsurvey.com/free](http://www.microsurvey.com/free)

## DRONEMAPPER CHOOSES GLOBAL MAPPER FOR UAV IMAGERY PROCESSING

**Blue Marble Geographics** is pleased to announce that Colorado-based **DroneMapper** has selected **Global Mapper** to perform the bulk of its data processing workflows. The company employs the software's intuitive 2D and 3D visualization tools to provide quality control of its ortho-rectified imagery and makes use of Global Mapper's extensive LiDAR processing capabilities for DTM creation and terrain analysis. Global Mapper is DroneMapper's go-to application for filtering point cloud data to create accurate, bare-earth Digital Terrain Models. These DTMs allow the company to generate customized contour lines that can be exported in shapefile or virtually any other vector format. Global Mapper's powerful cut and fill analysis capability, and volumetric calculation tools are used to precisely measure volumes, providing DroneMapper's clients in a variety of industries with site-specific intelligence that is essential for efficient project management.

[www.bluemarblegeo.com](http://www.bluemarblegeo.com)

## TELEDYNE CARIS RELEASES NEW VERSION OF BATHY DATABASE

**Teledyne CARIS™** is pleased to announce the release of **Bathy DataBASE™ (BDB) 4.4**. This new version addresses the important areas of feature generalization and automation of product generation for chart compilation, as well as the increasing emphasis on bathymetric LiDAR surveys. A collection of new techniques for generalizing bathymetry in chart compilation workflows can be found in **BASE Editor™**, which is part of the BDB suite. Point suppression and smoothing techniques help reduce the manual work associated with turning survey data into chart ready vector features. These techniques can be used in isolation or together with other bathymetric feature compilation tools to produce the best results possible. New Lidar point cloud editing tools allow for visual inspection, elimination of outliers, and point re-classification to be performed at the same time; with one tool. [www.teledyne.com](http://www.teledyne.com)



## SHINGLE B: THE ONLINE TOOL HELPING PROTECT AND MONITOR SHINGLE BEACHES

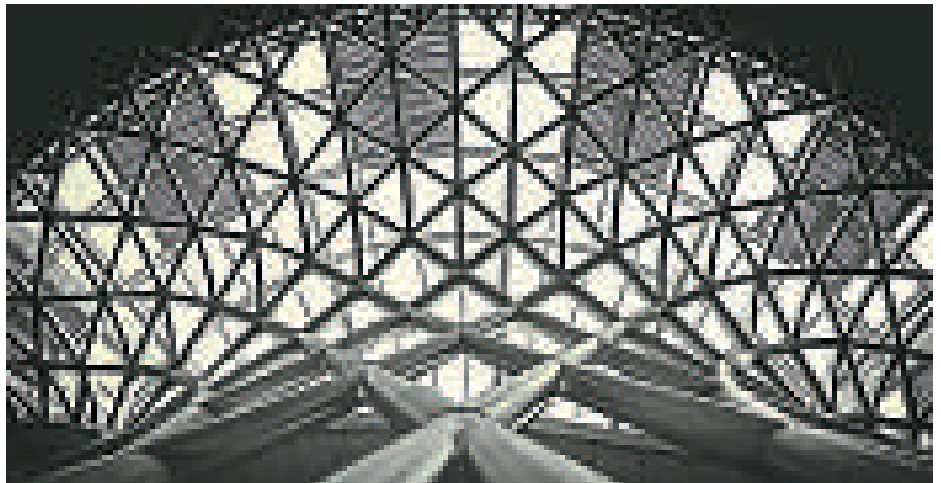
Shingle beaches occur in relatively few places around the world, with most of them found in the UK, Japan and New Zealand. Instead of consisting of fine sand, they are made up of sediment of coarse beach material in varying sizes from 2mm upwards. Shingle beaches have received much less attention from the research community than sandy beaches, with the result that fewer modelling tools exist to predict changes on shingle beaches. Funded by an Environment

Agency flood and coastal erosion risk management grant, New Forest District Council commissioned **HR Wallingford**, in collaboration with the **Channel Coastal Observatory**, to develop a shingle beach profiling tool, which can also account for wave conditions which include swell. The new parametric model, **Shingle-B**, is an online tool, which predicts the profile of shingle beaches, as they respond to bi-modal sea states. [www.hrwallingford.com](http://www.hrwallingford.com)

## GEOSLAM UNVEILS PREDICTIONS FOR ENGINEERING'S DIGITAL FUTURE

**GeoSLAM**, a leader in 3D mobile mapping technology is calling on the engineering and construction sector to recognise the 'fourth industrial revolution' in a new white paper entitled 'Digital Engineering: Building Reality'. Published by **GeoSLAM**, the whitepaper comes after latest forecasts reveal that growth in the construction sector will rise by 70 per cent across the world by 2025, with big data analytics, drones, mobile connectivity, sensors and other digital technology playing

a significant role in enabling this growth. Underlining the increased role digital engineering will play in future planning, **John Allan, Vice President of Sales & Marketing at GeoSLAM** said, "Compared to other industry sectors, the construction and engineering industry has been slow to embrace digital technology. But this is about to change. In this competitive market, now is the time to embrace digital engineering; those who do will not only survive, but thrive. [www.geoslam.com](http://www.geoslam.com)



# PHASEONE INDUSTRIAL

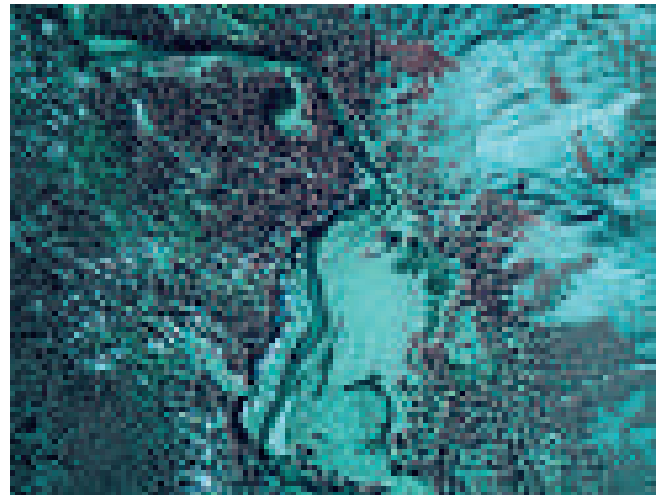
## 100MP Aerial Camera Systems

Phase One cameras offer reliability and versatility for users looking for full-featured metric medium format aerial cameras. Easily integrated into existing or new system setups, the cameras offer maximum connectivity with diverse systems for a wide range of high accuracy applications.

Mapping



Environmental



Oblique



Inspection



## PCI GEOMATICS RENEWS EDUCATION ALLIANCE AGREEMENT WITH STELLENBOSCH UNIVERSITY

PCI Geomatics announced that it has extended a Strategic Education Alliance Agreement with **Stellenbosch University** (SU) for another year. Now entering its second year, this agreement recognizes SU as the sole PCI Technology Centre of Excellence in Remote Sensing and Geomatics in South Africa. PCI's desktop software suite, **Geomatica**, is widely used during the teaching and training of the professionally accredited qualification of **GeoInformatics at SU**. **PCI OrthoEngine** is used exclusively during the teaching of the second-year GIT 242 Digital Photogrammetry module. The Centre for Geographical Analysis at SU also offers a range of short (one-week) courses to individuals in the industry who cannot register for the full-time SU GeoInformatics programmes. PCI Geomatica is used in the majority of image pre-processing training in both the Introduction to Earth Observation and the Geographical Object Based Image Analysis (GEOBIA) courses. Both courses were offered in 2016 and were well attended. [www.sun.ac.za](http://www.sun.ac.za)  
[www.pcigeomatics.com](http://www.pcigeomatics.com)

## ESRI AND SMART DUBAI SIGN ENTERPRISE AGREEMENT

Esri has announced that **Smart Dubai**, the government agency leading Dubai's smart city transformation, has signed an enterprise agreement (EA) providing **ArcGIS** technology to 44 entities across the government. The EA will be used by Smart Dubai for its smart city platform, called **Dubai Pulse**, to integrate and map data for better decision-making. The shift toward smart technologies in recording and processing data, is the foundation for success in the era of big data. Dubai Pulse will use Esri's geographic information system (GIS) technology, clubbed with data accumulated by the Dubai Data Establishment, to offer smart and secure services and tools including dashboards, mobile apps, and analytics capabilities. Dubai Pulse will empower the government of Dubai to identify issues such as traffic accident hot spots, increase citizen engagement in planning projects through the sharing of realistic 3D models, and assist with sustainability initiatives including solar energy generation. [www.esri.com](http://www.esri.com)



## 3D REPO'S VR SIMULATOR HELPS TRL SHAPE FUTURE OF AUTONOMOUS VEHICLE SERVICES

**3D Repo** is creating 3D Virtual Reality visualisations to help simulate driverless vehicle routes as part of a GBP 100 million government backed research project. Led by TRL, the project is part of the **Smart Mobility Living Lab**, located in Greenwich, London. The Living Lab provides a real-life environment where Connected and Autonomous Vehicles (CAVs) can be developed, evaluated and integrated with the local community. 3D Repo's cloud-based Building Information Modelling (BIM) collaboration software

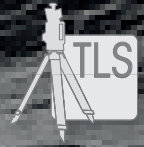
combines with the latest Virtual Reality (VR) headsets, so enabling visitors to the Living Lab to explore the local transport environment from the convenience of an 11th floor office. Designed to showcase advances in online BIM projects and 3D visualisation techniques in the context of autonomous vehicle transportation, the 3D Repo simulator offers the potential for developing and testing CAV mobility services, including communication, physical, digital, vehicle and control centre infrastructure. [www.3drepo.org](http://www.3drepo.org)

## BLUESKY LASER MAPS HELP ARCHERITAGE REVEAL HIDDEN TREASURES FOR THE NATIONAL TRUST

3D maps created from aircraft mounted lasers are helping the National Trust uncover secrets at the historic **Canons Ashby** estate in Northamptonshire, UK. Working with specialist archaeological and heritage practice ArchHeritage, the National Trust commissioned aerial mapping company **Bluesky** to complete a LiDAR survey of an area of 690 hectares, around and including the estate. From the millions of individual laser measurements

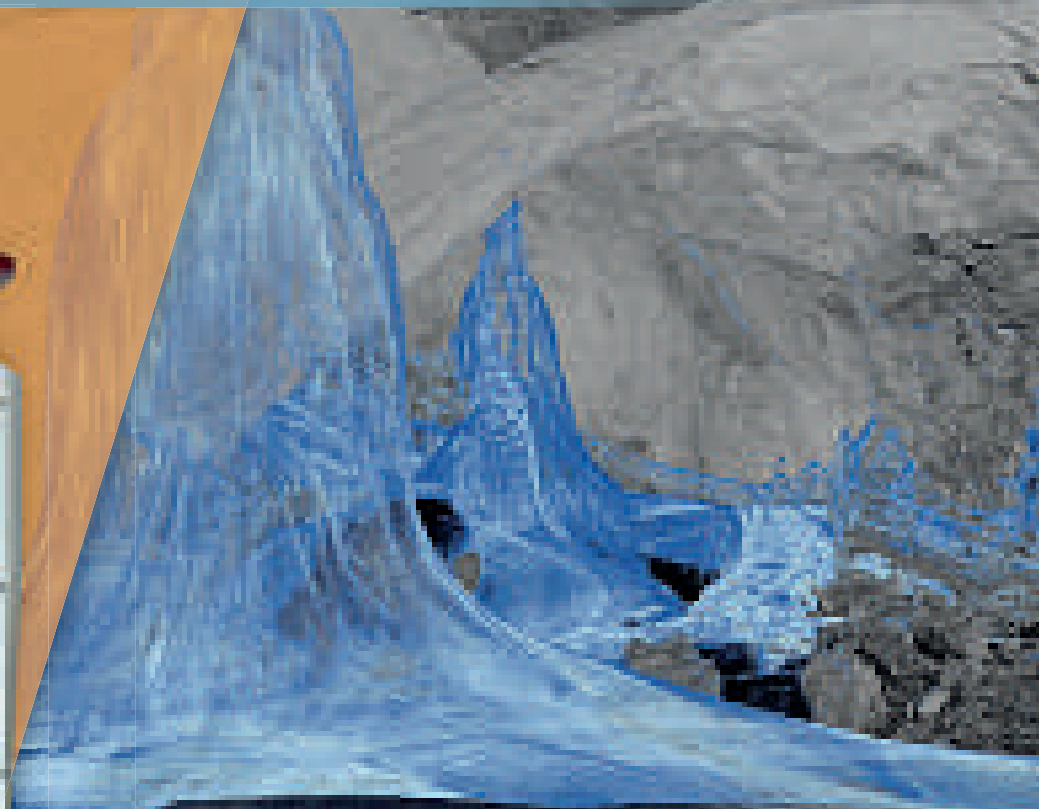
collected, Bluesky created high-resolution 3D models of the bare earth surface and of its surface features, including building and trees. Analysis of the Bluesky models has already uncovered evidence of more than 300 potential archaeological features within the survey area, whilst comparison with aerial photographs, dating back to the 1940s, is helping to identify more recent features and activities. [www.bluesky-world.com](http://www.bluesky-world.com)





# RIEGL VZ-400i

## Ultra High Performance 3D Laser Scanner



World's largest glacial cave in Werfen/Austria:  
Measurement data colored by reflectance for surface material detection  
(here: blue - ice)

**Proven in the Field:**  
**Extremely Fast Data Acquisition,**  
**Automatic On-Board Registration, User Friendly!**

- » **NEW** Automatic registration during data acquisition – **Tremendous time savings!**
- » Up to 1.2 million measurements/sec – **Extremely fast data acquisition!**
- » RIEGL Waveform-LiDAR technology – **Highly informative and precise data!**
- » Cloud connectivity via LAN, Wi-Fi and LTE 4G/3G  
– **Worldwide access for smart remote scanner control and data upload!**
- » Customizable workflows – **High field efficiency!**
- » User-friendly touch screen – **Easy to operate!**

Visit us at

**INTERGEO**

GLOBAL LEADER IN THE  
SURVEILLANCE MARKET



**RIEGL booth C4.032 in Hall 4.1**



RIEGL VZ-400i  
videos on our  
YouTube Channel  
online!



[www.riegl.com](http://www.riegl.com)



**RIEGL**®



## SECURITAS TAKES THE GREENROAD

**Securitas** has partnered with **GreenRoad** – the industry leader in driver safety and behaviour technology – to improve driver safety among its 11,000 employees. With vehicle collisions the number one cause of work-related deaths in the UK, Securitas wants to reduce risks associated with driver behaviour – both for the welfare of its employees and other road users. GreenRoad technology will allow Securitas to track the movements of its fleet, monitoring driver behaviour, such as harsh braking, cornering, lane handling, acceleration and speeding. Each vehicle will be fitted with technology providing real-time data, cascaded to an online reporting and analytics platform. This will enable Securitas to track its entire fleet, while monitoring driver behaviour. This latest initiative demonstrates how Securitas is investing in technology to provide a superior service. Blending people, technology and knowledge, Securitas delivers complete peace of mind. This technology will be fully implemented by October 2017. [www.greenroad.com](http://www.greenroad.com)

## SKYLINE SOFTWARE SYSTEMS RELEASES TERRAEXPLORER FOR WEB V7.0

**Skyline Software Systems Inc.** has released **TerraExplorer for Web v7**, a lightweight 3D geographical information system, or GIS, viewer that enables the user to view high-resolution, stunningly realistic **SkylineGlobe 3D** content in a web browser, without any plugins. This latest version offers a simple, no-download, no-installation solution for online viewing and analysis of 3D environments. Building on standard Cesium support for imagery, elevation and KML layers, TerraExplorer for Web can display most spatial databases including 3D city layers (3DML/3D Tiles) and feature layers (WFS). TerraExplorer for Web integrates smoothly with the entire Skyline product line for easy access to data – from photo-realistic, geographically accurate terrain databases created in TerrainBuilder to PhotoMesh's automated high-resolution, textured, 3D mesh models created from photographs, video and other sensors. Based on HTML5/WebGL standards, TerraExplorer for Web provides support for multiple platforms and browsers (Windows, Mac, Linux and more). [www.skylinelobe.com](http://www.skylinelobe.com)



## SOLAR ORBITER ON TRACK TO LAUNCH BEFORE NEXT TOTAL SOLAR ECLIPSE

The recent Solar Eclipse across the United States of America provided a spectacular view of the mysterious Solar Corona, the one million degree "halo" around the sun. The European Space Agency spacecraft **Solar Orbiter** is in the final stages of spacecraft integration at the **Airbus** spacecraft assembly hall in Stevenage, UK. Solar Orbiter will be launched in February 2019 into a close orbit around the Sun and will allow scientists to

study the solar corona in much more detail, for much longer periods, and at a much closer distance that can ever be reached here on the ground, or for that matter, by any spacecraft circling the Earth.

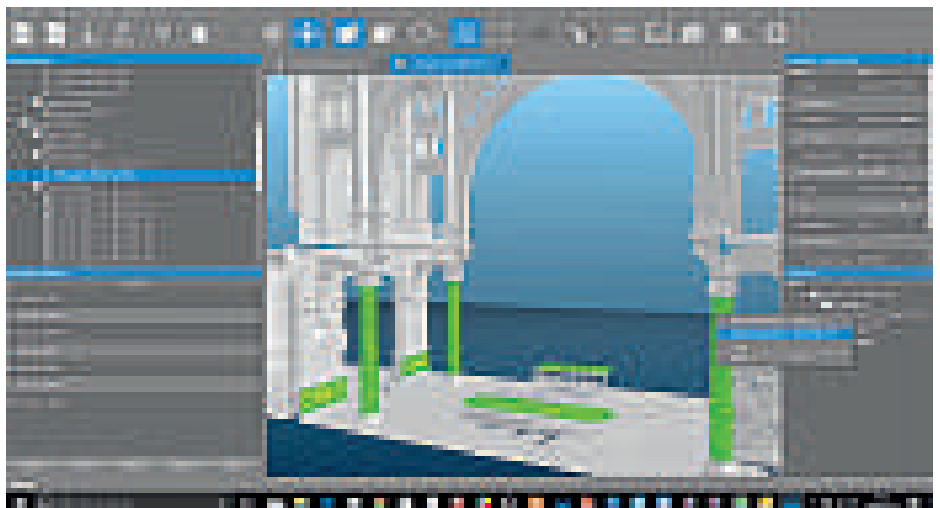
By the time of the next global total eclipse, on 2nd July 2019, Solar Orbiter will have begun its three and a half year journey to the inner solar system to get close to our Sun.

[www.airbusdefenceandspace.com](http://www.airbusdefenceandspace.com)

## POINTFUSE V3 POINT CLOUD SOFTWARE ANNOUNCED

**Arithmetica**, the company behind **Pointfuse** point cloud conversion software, has announced the release of Pointfuse V3. Offering a new approach to the processing of point cloud data, Pointfuse V3 produces 3D models that are 1:4 the size of the original point cloud, and streamlines the workflow of the engineering and design professional user. The automatic data conversion process in Pointfuse V3 reduces the cost of projects undertaken by anyone using

a 3D reality capture system to supply data for use in 3rd party architecture or engineering design solutions. Pointfuse V3 provides a unique approach, classifying objects within a 3D scene. Surfaces within the 3D models produced by Pointfuse V3 can now be identified, grouped and classified. These characteristics bring workflow efficiencies to the project that are not possible when working with point clouds or traditional mesh models. [www.arithmetica.com](http://www.arithmetica.com)



# RUGGED COMPUTERS FOR TOUGH ENVIRONMENTS



## SERIOUSLY RUGGED AND READY FOR ANY FIELD TASK

The rugged computers from Handheld are best known for the combination of high performance and the strength to be able to handle the most demanding field applications. Laughing off the roughest weather and harshest handling, they are perfect for today's mobile workforce.

Get to know our best GIS products at [www.handheldgroup.com/geo17](http://www.handheldgroup.com/geo17)

Meet us at INTERGEO Hall 2.1, Stand C2.002

**handheld**

## TCARTA MARINE CHANGE THE WAY DYNAMIC ENVIRONMENTS ARE MANAGED AND MONITORED

TCarta Marine is creating the **Vector Shoreline Products** at Global, National and Local scales for mapping applications as diverse as environmental protection, coastal infrastructure development and flood insurance rate calculations. Many of the Vector Shoreline Products are available off-the-shelf, while others are custom derived from archived or newly collected satellite imagery. Available off-the-shelf for the entire world, the **Global Vector Shoreline** are 1:60,000-scale vectors derived from **U.S. Landsat** satellite imagery. The data sets include 2 million linear kilometers of coastlines, 400,000 islands, and thousands of rivers and streams. This scale provides broad-area resolution in a manageable file size ideal for monitoring global change over time. **TCarta Marine President Kyle Goodrich** said, "Whether your application requires a snapshot of shoreline locations in the 1970s or continuous monitoring of a changing coastal ecosystem today, we can provide the right data set." [www.tcarta.com](http://www.tcarta.com)

## SKYLINE SOFTWARE SYSTEMS RELEASES PHOTOMESH 7.2 WITH FULL MOTION VIDEO CAPABILITY

**Skyline Software Systems Inc.** has announced the release of **PhotoMesh v7.2**. This latest version of the software offers new performance features including the use of Full Motion Video files during the production of 3D Geospatial Models. All popular video formats are supported. Additional improvements in the new version of PhotoMesh include an easy to navigate user interface, enhanced reconstruction of trees, solid surfaces and water bodies, and support for external aero triangulation results from industry standards (Inpho, Bingo and others). PhotoMesh incorporates breakthrough edge-extraction algorithms, noise removal, improved colour texturing, and optimized point cloud densification for the highest geometric quality. Utilizing revolutionary parallel processing techniques and accessing Cloud Web Services, Skyline can produce high-quality 3D models in a variety of different formats with unlimited scale, surpassing processing capacity of 1 million Megapixels per day. [www.skylineglobe.com](http://www.skylineglobe.com)



## GARMIN RECEIVES EASA APPROVAL FOR NEW GTN 650/750 FEATURES

**Garmin** has announced an expanded feature set, an enhanced user interface and additional wireless connectivity solutions for its popular **GTN 650/750** touchscreen navigators. New GTN enhancements include pinch-to-zoom and Flight Stream 510 integration, which supports wireless Database Concierge between the GTN and the Garmin Pilot app on a mobile device. Flight plan transfer, as well as traffic, weather, GPS information and more also display on select mobile devices when paired with **Flight Stream 510**. Pilots can also utilize the Garmin

Pilot app on Apple mobile devices to send text messages and initiate phone calls. These new features bring advanced capabilities and even more functionality to new and existing GTN 650/750 touchscreen avionics. Flight Stream 510 is a small, patented Wi-Fi and Bluetooth-enabled MultiMediaCard (MMC) that enables wireless Database Concierge and communication between the GTN 650/750 series, select avionics and up to two compatible Apple or Android mobile devices operating Garmin Pilot. [www.garmin.com](http://www.garmin.com)

## TABOOLA CHOOSES DIGITAL ELEMENT TO ENHANCE GEOLOCATION SERVICES

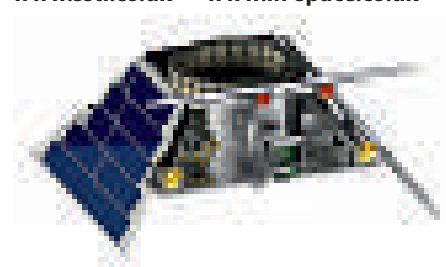
**Digital Element** announced that global content discovery platform, **Taboola**, has chosen its **NetAcuity Pulse** technology to help identify users' IP, worldwide. Leading publishers, marketers, and agencies – including NBC, USA Today, and Fox Sports – utilise Taboola's predictive technology to increase user engagement, monetise traffic, and distribute content to global audiences. By using Digital Element's NetAcuity Pulse technology, Taboola will be able to identify each consumer's location, connection speed, and connection type without

the user becoming personally identifiable. WiFi connection type data is particularly valuable when promoting mobile app downloads, as users are more likely to download mobile apps when WiFi is available. **Adam Singolda, CEO and Founder of Taboola** said, "We're excited to partner with Digital Element's NetAcuity, bringing better and more precise ways to recognise users' IP as we're constantly looking to improve our mobile services." [www.digitalelement.com](http://www.digitalelement.com) [go.taboola.com](http://go.taboola.com)

## "FARADAY", AN ULTRA-LOW COST RIDE TO LOW EARTH ORBIT OPPORTUNITY

**Surrey Satellite Technology Ltd (SSTL)** and **In-Space Missions Limited (In-Space)** have today revealed an opportunity for an ultra-low cost ride to Low Earth Orbit (LEO). The in-orbit demonstration Faraday missions, named in honour of Michael Faraday, one of Britain's greatest experimentalists and scientific communicators, will offer ultra-low cost prices for a ride to LEO starting at \$12,000. The Faraday satellite platforms will be designed and manufactured by SSTL making use of their world leading robust space design approach, with In-Space managing the payload interface and providing customers with expert support for design, test and service exploitation. **Anita Bernie, Director of Platforms at SSTL** said

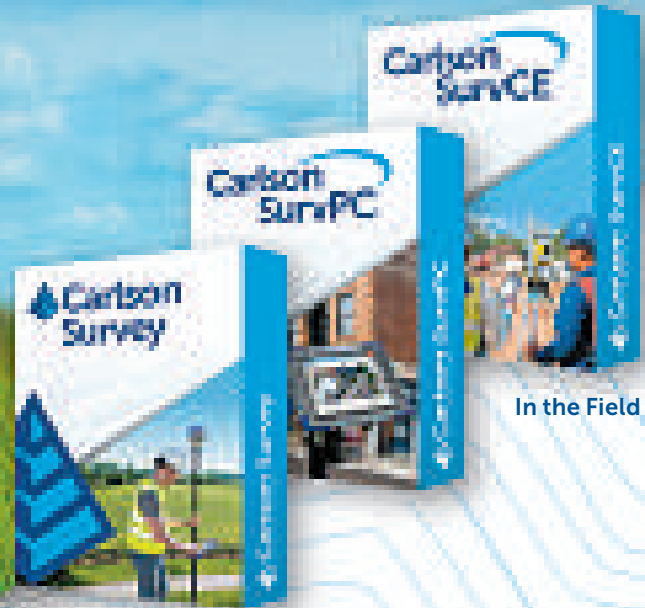
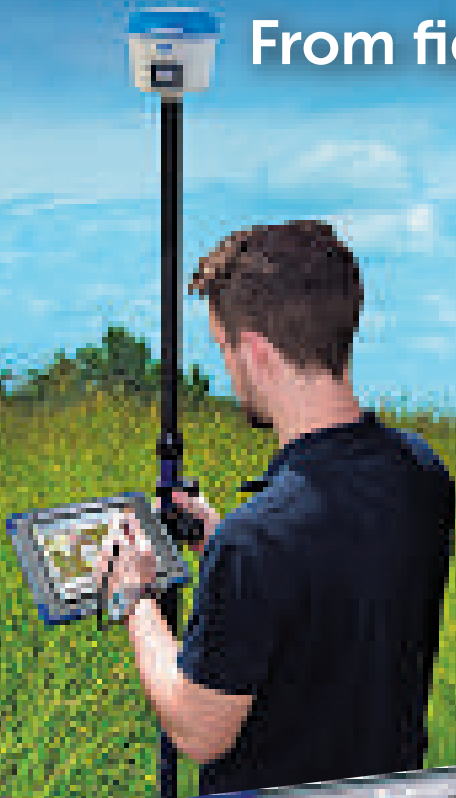
"The cost of accessing space on a robust and flight-proven platform has traditionally been out of reach for many small payload providers so I am delighted that SSTL and In-Space are working together on Faraday's ultra-low cost ride opportunity to LEO orbit." [www.sstl.co.uk](http://www.sstl.co.uk) [www.in-space.co.uk](http://www.in-space.co.uk)



# Carlson for Surveyors

Visit us at  
Intergeo  
Hall 1.1  
Booth #  
B1.059

From field... to finish



In the Field

In the Office



RT3



BRx6

## BRx6 GNSS Receiver

Combined with SurvCE, get the highest positional accuracy.

## Carlson RT3 Rugged Tablet

Cross Platform Field Solution. Work natively in Esri,<sup>®</sup> DGN<sup>®</sup> & DWG with no conversion.

Carlson Software Inc.  
33 East 2nd St, Maysville, KY 41056, USA  
800-989-5028 ■ 606-564-5028  
www.carlsonsw.com

Carlson EMEA  
Markerkant 1338 ■ 1314 AN Almere  
The Netherlands ■ +31 36 750 1781  
emea@carlsonsw.com ■ carlsonsw.com

