

LIZARDTECH RELEASES MRSID GENERATION 4 DECODE SDK VERSION 9.5.4

LizardTech® announced the release of the MrSID® Generation 4 Decode SDK Version 9.5.4 to compliment the release of LizardTech's GeoExpress® Version 9.5.3. This latest SDK release includes support to view MrSID compressed Harris Geiger-Mode LIDAR point clouds, paralleling previously incorporated tools for viewing MrSID compressed LAS and LAZ point clouds. LizardTech continues to enhance LIDAR and raster compression capacity across its image asset handling platform for image compression, management, distribution, integration and deployment. This includes updating compilers, refreshing target computing platforms and improving compression performance. Trusted as a raster format by geospatial professionals since 1992 and supported in a broad spectrum of GIS and CAD applications, MrSID is the highest quality file format with the most advanced compression technology available. MrSID Generation 4 Decode SDK is available online enabling application developers to add support for viewing and decoding multiple image files. www.lizardtech.com

ALIGNED ASSETS RELEASES ADDRESSBASE TOOLKIT FOR MAPINFO

The AddressBase Toolkit has been developed to provide a visualisation of AddressBase Premium data for MapInfo users, allowing the use of AddressBase Premium within their GIS without the cost or complexity of a full database management system. The AddressBase Toolkit was created as a means by which all users can benefit from the success of the AddressBase Premium dataset. The Toolkit imports AddressBase Premium into MapInfo format and provides a fast search engine to find addresses. The AddressBase Toolkit carries out all the heavy lifting to import and convert the complex AddressBase Premium Data into a meaningful format without the user having to know the AddressBase data structure. It allows users to zoom to the property once found, as well as being scalable and providing sub-second search performance on all the street and property data for the whole of the UK. It works seamlessly with MapInfo Professional. www.aligned-assets.co.uk



TWO EU PEACEKEEPING FORCES SELECT GLOBALSTAR

Globalstar Europe Satellite Services Ltd announced that two EU peacekeeping organisations have deployed the **SafeFleet Telematics** fleet management solution, incorporating **Globalstar's SmartOne** device. The **European Union Monitoring Mission in Georgia** (EUMM) and **EU Rule of Law Mission** (EULEX) both chose SafeFleet Telematics to track and manage fleets, monitor driver behaviour, and safeguard personnel and civilian passengers in Georgia and Kosovo respectively. Both organisations have responsibility for maintaining law and

order, as well as carrying out judiciary, policing duties and border patrol in their regions. They both sought a fleet tracking and monitoring platform to replace incumbent technology that was deemed inadequate. Only SafeFleet Telematics was able to deliver the required high level of functionality, reach and reliability, and at the right price. The phased deployment at the two organisations is now complete with SafeFleet Telematics installed in vehicles used for logistics and transport, including armoured vehicles and all-terrain pathfinder vehicles. www.globalstar.com

AIRMAP AND SENSEFLY PARTNER TO ADVANCE SAFETY FOR COMMERCIAL DRONES

AirMap and **senseFly** announced that they have partnered to deliver AirMap's airspace services to **senseFly's eBee** fixed wing drones and albris quadcopter. **AirMap's airspace** platform services will be directly integrated into **senseFly's eMotion** flight and data management software, providing professional operators and their drones with critical information and tools to enable safe missions. AirMap's industry-leading situational awareness data include airspace rules and advisories, locations of critical infrastructure, and real-time alerts about nearby manned air traffic flying in the surrounding airspace. senseFly drones will also begin leveraging AirMap's flight planning tools and solutions for Unmanned Traffic

Management, including technology that will allow senseFly drones to submit digital flight notices to more than 125 airports. **AirMap CEO Ben Marcus** said, "We're excited to partner with senseFly to realize safe, efficient commercial drone operations." www.airmap.com www.sensefly.com



APPLIED STREETVIEW AIDS BUSINESSES WITH TURN-KEY STREETVIEW CAMERA SOLUTION

With its turn-key **Streetview Camera Solution**, versatile enough to suit all business types and industry applications, **Applied Streetview** gives organizations the opportunity to capture data and tell their own tale in 360° grace, without the need to outsource any part of the process. Understanding a business's desire to keep its high-volume footage secure at all times, it offers total control to companies with its high resolution, end-to-end Streetview Camera Solution, differentiating itself from the uncontrolled, ever-changing public streetview services and low-resolution products currently dominating the market. **Jan Martin, CEO of**

Streetview Technology said, "High quality, up-to-date streetviews aid critical business decisions every day – whether that is to learn the true nature of the surroundings of a new construction site, or if it is to show customers where an office is actually located." www.applied-streetview.com



PHASEONE INDUSTRIAL

iXU-RS 1000 Aerial Camera Precision With Reliability and Speed



The 100MP Aerial Camera with exceptional performance and advanced capabilities

- 100MP: More coverage during flight whilst maintaining GSD
- Innovative electromagnetic central leaf shutter
- Enhanced exposure speed: 1/2500s
- Unprecedented reliable shutter life span, 500,000 exposure warranty
- CMOS Technology: capture high quality images up to 6400 ISO
- Capture rate of 0.6 seconds per frame



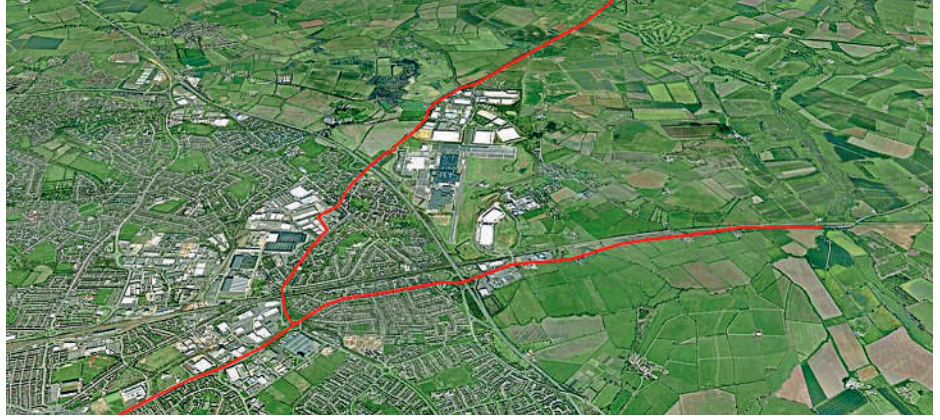
industrial.phaseone.com

GAUSS+LÖRCHER: NEW BARTHAUER TRAINING PARTNER IN SOUTHERN GERMANY

GAUSS+LÖRCHER Ingenieurtechnik GmbH, a dependable sales and distribution partner of **Barthauer Software GmbH**, becomes a certified training partner for the **BaSYS network information system**. By awarding this trainer licence, BARTHAUER extends its support and sales activities in southern Germany. GAUSS+LÖRCHER has been operating as an engineering firm for municipal services since 1992, specialising in civil engineering and sewer rehabilitation, as well as geographic information systems. Currently, the GIS department supervised by **Dr. Karl-Heinz Röder** supports the design and project development of geo-information systems in approximately 80 cities, municipalities, public utilities and associations in southern Germany. The company entered into a sales and distribution partnership with Barthauer Software GmbH early in 2015. Municipal users in the area from Stuttgart to Lake Constance benefit from the close spatial proximity to the customer that the new point of contact for the market-leading infrastructure management solutions from BARTHAUER brought with it. www.barthauer.de

ADW-SOFTWARE LAUNCHES MYCUMULUS: "MOBILE DATA COLLECTION HAS NEVER BEEN EASIER!"

ADW Software has launched **MyCumulus** a combination of an app, a website and a number of tools that allows any user to create its own forms, collect data on an Android smartphone or tablet and view the data on the MyCumulus website. The data can be imported in Excel© and in **Pythagoras CAD+GIS Software**. MyCumulus has an **Open API**, allowing developers to write tools that interact with the MyCumulus server. Integration of databases and making custom reports are just a few examples of the plenitude of solutions the API offers. MyCumulus is the ideal solution for GIS data collection for land surveyors, municipalities, public facilities, fieldwork research and surveys to name just a few. **Jan Van Looy, Sales Director at Pythagoras** said: "MyCumulus offers an exceptional new way of collecting GIS data and getting them in Pythagoras. This opens new opportunities for Pythagoras users." www.adw-software.com



CARTOCONSULT PIONEERS GIS INNOVATION TO TACKLE TRAFFIC CONGESTION

CartoConsult is to develop technology to reduce traffic congestion and improve transport services as part of a £4 million **Department for Transport (DfT)** initiative. The mapping software technology company has been selected by **Swindon Borough Council**, together with IT and networking company Cisco, to deliver an alert system for traffic managers to improve the dissemination of congestion information. The Government-funded scheme will use the latest technology to transmit

real-time traffic information to road users, such as delivery drivers, including those making just-in-time deliveries. CartoConsult will use the latest innovations in mapping and the Internet of Things (IoT) to help improve traffic management on key routes in Swindon. The project provides live data from a much larger sample of traffic and allows the latest technology to be tested to identify if it would be of benefit across the town's – and ultimately the country's – entire highway network. www.cartoconsult.co.uk

FUGRO'S STRATEGIC ROLE IN THE ZUIDASDOK PROJECT IN AMSTERDAM

Fugro will provide consultancy and site characterisation services for the **Zuidasdok** project in Amsterdam to the **ZuidPlus** partners **Fluor, Heijmans** and **HOCHTIEF**. The Zuidasdok project is one of the largest infrastructure projects in The Netherlands and includes the widening and partial tunneling of the A10 South motorway and expansion of the Amsterdam South railway station. The new proposed highway will be extended to eight lanes for through traffic and four

lanes for local traffic. Improvements will also include the construction of a new Amsterdam South railway station. The Zuidasdok project is essential for accessibility to the Zuidas business district. Partial tunneling will create space for a new public area and the new Amsterdam South railway station, turning it into a high-quality public transport hub. Planning and construction will commence in 2019 and the project is expected to be completed around 2028. www.fugro.com



QUESTUAV – DRONE GIRLS VERSUS DRONE BOYS

The face of the **Drone** industry is changing. Girl power is taking an increasingly important role in the Drone industry. It has long been proven that women have skill sets in engineering, training and project management that more than compliment their male counterparts. As a male driven hobby, it's not surprising that men were historically at the forefront of the game. But as the Drone Industry has flourished it's not surprising that girls have decided it is their frontier too. At **QuestUAV** they have a team of 20 people, almost a third of whom are women. Two of their staff are truly "Drone Girls" and fulfil roles on the flight team itself. Already the QuestUAV product including the **DataHawk**



and **Q200 Surveyor Pro** is being flown by several female clients who have attended training at the QuestUAV UK based flight school. www.questuav.com

EUROPEAN SPACE IMAGING MAIN PROVIDER OF VHR SATELLITE IMAGERY TO THE EUROPEAN COMMISSION

European Space Imaging announced that the company has signed a multi-year framework supply contract with the **European Commission** for the provision of very high-resolution (VHR) satellite data and associated services in support of the European Union's Common Agricultural Policy (CAP). This third exclusive framework agreement between the European Commission's Joint Research Centre (JRC) and European Space Imaging (EUSI) covers imagery from the most advanced fleet of VHR satellites and grants the JRC and the EU Member States access to imagery of the highest spatial and spectral resolution currently commercially available. The contract has an estimated total value of 38 million EUR over a period of up to 4 years and will be carried out by European Space Imaging its technology partner GAF AG and in



close cooperation with the satellite operators DigitalGlobe and SI Imaging Services. www.euspaceimaging.com

BELL GROUP BOOSTS TRACKING CAPABILITIES WITH CTRACK

Bell Group UK has upgraded its vehicle tracking capabilities with an advanced telematics solution from **Ctrack**. The contract painting, decorating and maintenance specialist has adopted **Ctrack Online** along with the **Ctrack Mobi2** mobile app, which will enable supervisors and managers to access tracking information when away from the office. Bell Group will use the system to monitor driver behaviour, business/private mileage and operational performance across a fleet of more than 300 vans. Ctrack Online will support Bell Group's ongoing fleet strategy, which is designed to improve road safety, minimise environmental impact and achieve operating efficiencies. The company has been working with Ctrack for over ten years, resulting in measurable improvements in fleet performance including significant fuel savings, lower insurance premiums and a reduction in unauthorised personal vehicle usage. www.ctrack.com



NEW LIDAR QC TOOL FOR GLOBAL MAPPER LIDAR MODULE V18.1

Blue Marble Geographics is pleased to announce the immediate availability of an update to the **Global Mapper LiDAR Module**. Released in conjunction with Global Mapper version 18.1, Blue Marble's popular GIS software, the latest edition of the Module includes a powerful **LiDAR Quality Control** function; a new option for visualizing and filtering a point cloud based on density; and a tool for assigning colors to LiDAR points from an underlying gridded layer. The Global Mapper LiDAR Module is an optional add-on to the software providing numerous advanced point cloud management and analysis tools, including automatic ground point detection and classification; feature extraction; cross-sectional viewing and point editing; significantly faster terrain surface generation; and much more. Current users of Global Mapper can activate a free two-week trial of the LiDAR Module from the Module/Extension License Manager in the software. www.blumarblegeo.com

ADVANCED GROUNDWATER TECHNOLOGIES JOINS PCI RESELLER PARTNER NETWORK

PCI Geomatics announced that **Advanced Groundwater Technologies** (AGWT) has joined its reseller network. AGWT will provide Serbian and Croatian customers with **Geomatica®** software products, support, and training. The PCI Geomatics Reseller Partner Network includes companies from over 40 countries that work closely with their customers on challenging image-processing projects such as understanding the impact of aquifer ground water extraction and the impacts on critical infrastructure due to the resulting subsidence. "Our Reseller Partners provide a local presence to ensure customers are successful with our software products," said **Arnold Hougham, VP of Sales and Marketing at PCI Geomatics**. "AGWT's experience and industry contacts in Serbia and Croatia will greatly help clients by providing training and front-line support in this growing market," Dr. Dragan Kaludjerovic, founder and owner of AGWT said, "We are very pleased to join the PCI Geomatics Reseller Partner Network, and to support our quantitative hydrogeological consulting practice." www.pcigeomatics.com www.advancedgwt.com

SITEIMPROVE CHOOSES DIGITAL ELEMENT TO ENRICH ITS OFFERING

Digital Element announced that Siteimprove has deployed its NetAcuity Edge™ hyperlocal IP geolocation technology to enrich its analytics and audience segmentation capability. Siteimprove offers Software as a Service (SaaS) to help more than 5,000 global customers create a better experience for their website visitors. By incorporating Digital Element's highly accurate IP geolocation technology into its analytics platform, Siteimprove has dramatically improved its ability to accurately track users' locations for its clients' websites, all in a privacy sensitive manner. This enables their clients to make more informed decisions for website optimisation and better segment visitors. The deployment of NetAcuity Edge™ produced some incredible results in a short period of time; for example, the number of unknown visitor locations to its customers' sites has dramatically reduced from 25% to less than 1%. www.digitalelement.com

AVENZA RELEASES GEOGRAPHIC IMAGER 5.2 FOR ADOBE PHOTOSHOP

Avenza Systems Inc. is pleased to announce the release of **Geographic Imager 5.2 for Adobe Photoshop®**. This latest update includes many new features including full compatibility with the latest **Adobe Photoshop Creative Cloud 2017** release. This Geographic Imager release also introduces the ability to import spatial image layers directly from **Esri's ArcGIS Online** accounts and web services into Adobe Photoshop enabling users to harness Geographic Imager's and Adobe Photoshop's tools to edit georeferenced high-resolution imagery. "This release means that both Geographic Imager and MAPublisher are fully compatible with Adobe CC 2017 and have ArcGIS Online integrated," said **Ted Florence, President of Avenza**. "We're continuously providing more ways for our users to import their data into an excellent map design environment," he added. "Avenza software covers your needs from any point in your mapping workflow, including output to mobile devices." www.avenza.com



3D REPO WINS EUROPEAN FUNDING FOR CYBER SECURITY SYSTEM

3D Repo is to play a key role in protecting industry from cyber attacks after winning a major research grant as part of a **European Commission-funded project**. Backed by a project fund of five million Euros, 3D Repo joins a consortium of eleven leading IT and communications organisations led by CNR, Italy's National Research Council. Other members include Hewlett Packard Italiana, British Telecommunications and SAP. The aim of the project is to define a collaborative and

confidential information sharing, analysis and protection framework as a service for cyber security management. 3D Repo was chosen as one of the best three SMEs from across Europe to participate due to its unrivalled technical skills and market traction. With the growth of digital information and Building Information Modeling (BIM), the cloud is the obvious platform for collaboration between multiple parties involved in construction and infrastructure projects. www.3drepo.org

WHAT3WORDS ADDRESSES SOUTH AFRICAN TOWNSHIP

what3words has collaborated with South African non-governmental organisation (NGO) **Gateway Health Institute**, to get some 54,000 residents of an impoverished informal settlement, on the map. With a mobile address printing machine and a team of local field workers, what3words and Gateway Health Institute addressed hundreds of homes in KwaNdengezi, a township on the outskirts of Durban, over the first two days. The project gives residents access to medical services such as ambulances and medicine, and has provided them with a medical record for the first time. Almost half (45%) of the 18.7 million adults in South Africa live in townships or



informal settlements. Homes in these informal settlements have no formal addresses, leaving those who live there invisible to the system. Residents can't order goods or receive deliveries, and they struggle to access basic utilities, amenities and medical care.

www.what3words.com

BLUESKY ANNOUNCES NEW ONLINE FLOOD RISK MAP OF THE UK

A groundwater flood risk map of the UK is being made widely available for the first time. Created by **JBA Consulting** and available online from aerial mapping company **Bluesky**, the map is designed to help home owners, developers and risk management authorities understand the threat of groundwater flooding. The new colour coded hazard map is easy to use and complements other flood maps and geographic datasets already available from the **Bluesky Mapshop**. Created using a range of data, including known locations of past groundwater flooding events, rainfall measurements and aquifer properties, the new map provides



classification of hazards on a 50 metre grid using a simple traffic-light system. A three tiered methodology, used to create the map, allows for quick and efficient updates and refining of the map for local areas of particular interest. www.bluesky-world.com

OPENING THE DOORS TO INNOVATION IN MANCHESTER'S CORRIDOR

Ordnance Survey (OS) is in Manchester collecting geospatial data to a similar level that it did across all the 2012 Olympic sites. The activity **OS** is undertaking is part of **CityVerve**, the UK's Smart City demonstrator project. Data is collected to stimulate innovation that it believes will lead to better services for residents, visitors and businesses. The OS digital database of Great Britain contains more than 500 million unique geographic features, presenting the

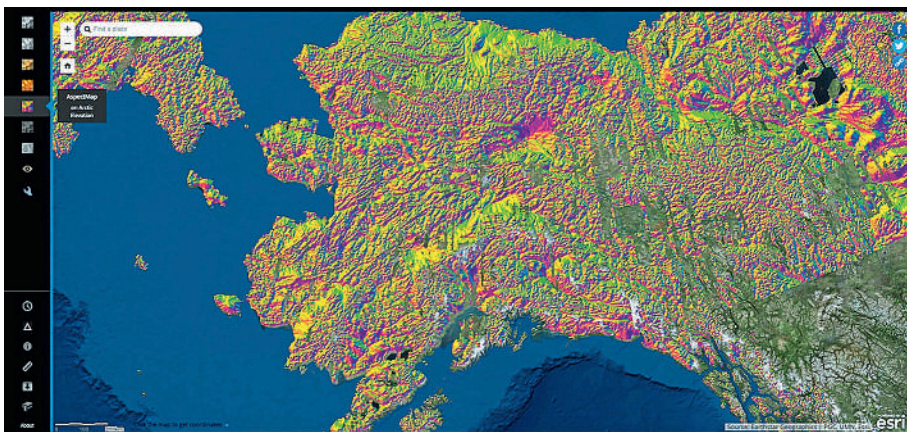
most detailed, location data rich picture of the country, is challenging itself through CityVerve to see what extra information can be found in the real world that will be of benefit to the nation. So far, the precise location of more than 40,000 individual street assets housed within the Corridor have been noted. Now Manchester is set to become a live arena for in-field innovation trials that demonstrate the capability of Smart Cities. www.os.uk



BIGGEST COLLECTION OF ARCTIC ELEVATION DATA YET AT ESRI FEDGIS CONFERENCE

Esri together with the **ArcticDEM** project has released the largest addition of new elevation models to the project thus far. The ArcticDEM project is an ongoing collaboration between **National Geospatial-Intelligence Agency (NGA)**, the **Polar Geospatial Center**, and Esri to produce high-resolution elevation models to support scientific and national security implications in the Arctic. Coupled with the accessibility of Esri's online platform, ArcticDEM can meet the need for high-quality elevation data in remote

locations and provide accurate measurement of topographic changes. "The latest release of this elevation data is the largest collection to date for this project," said **Don Kerr, Chief of News and Information, National Geospatial-Intelligence Agency**. "The release includes a much broader area of the Arctic geography than ever before, comprising more populated areas that will see a substantive benefit from access to this kind of detailed location data." www.esri.com



www.geoconnexion.com



ARROW SERIES

HIGH PRECISION GNSS RECEIVERS

for every mobile device

ARROW GOLD



1 cm RTK
with SafeRTK™
& Atlas

ARROW 200



1 cm RTK

ARROW 100



Submeter
& Subfoot GNSS

ARROW LITE



Submeter GPS

40-60cm with EGNOS and all SBAS
1cm real-time RTK accuracy
iOS/Android/Windows compatibility
GPS/GLONASS/BeiDou/Galileo/QZSS

 EOS POSITIONING SYSTEMS

WWW.EOS-GNSS.COM

ROC FRIESE POORT OPENS INLAND SIMULATOR CENTRE IN URK

ROC Friese Poort has opened an **Inland Simulator Centre in Urk** for inland navigation training in the region. The official opening ceremony was inaugurated by the regional commissioner **Mr. Leen Verbeek**. He took the helm, coached by a student from ROC Friese Poort and maneuvered a vessel through Rotterdam, experiencing sudden weather conditions and other traffic vessels. The Inland Simulator Centre features two **NAUTIS Simulators** from **VSTEP**, one with a 240° field of view and one with 120°. Also included are an Instructor Station and a Debriefing Room for after action review. The two inland simulators are named after an inland ship and icebreaker of Urk owners, Hinte and Jelly Auke. "In the area of inland shipping this is the haute couture. There are no nicer developed inland simulators than these ones from VSTEP", states **Mr. Harold Munsterman, Instructor at ROC Friese Poort**. www.vstepsimulation.com

THE GETECH GROUP WINS OGA 21CXRM CONTRACT

Getech has been awarded a contract by the **Oil and Gas Authority (OGA)**, in collaboration with the **21CXRM Technical Advisory Committee**, for a petroleum system related study of the **United Kingdom Continental Shelf (UKCS) South West Approaches region**. A key finding of the Wood Report was that the Government and the oil and gas industry should have a current and easily accessible digital record of the geology and prospectively of the UKCS. To support this objective, the **21st Century Roadmap Technical Advisory Committee** was set-up to support technical assurance in mature areas and promote investment into frontier regions. The committee is led by the OGA and includes industry representation from Azinor Catalyst, BayernGas, BP, Chevron, DONG, ENGIE, Hurricane Energy, Maersk Oil, Shell and Siccar Point Energy. Their role is to award contracts and develop a collaborative framework to enable the UK exploration and production community to meet the Wood Report's recommendations. www.getech.com



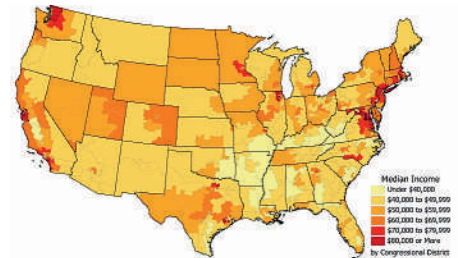
MAYOR OF FREMANTLE OPENS AUSTRALIA SHIP SIMULATION CENTRE

City of Fremantle Mayor Dr Brad Pettitt, performed the official opening at a reception for a new specialist **Ship Simulation Centre**, based in Fremantle, on Thursday 9 February 2017. The **Australia Ship Simulation Centre**, owned and operated by **HR Wallingford**, has moved into new premises from where it will continue to provide expert navigation consultancy and a dedicated Pilot training centre for Western Australia and the wider region. **HR Wallingford UK's Chief Executive, Dr**

Bruce Tomlinson and Dr Mark McBride, Ships Group Manager, joined **Ben Spalding, Manager of the Australia Ship Simulation Centre**, in inviting clients, Pilots and members of Western Australia's maritime community to explore the new facilities, which include state-of-the-art ship and tug simulators. Mayor, Dr Brad Pettitt, said: "It is really good to see this restored heritage building, now housing today's state-of-the-art technology." www.hrwallingford.com

MAPTITUDE 115TH CONGRESSIONAL DISTRICTS WITH 2010/15 CENSUS & ACS DEMOGRAPHICS

Caliper is excited to announce that **Maptitude 115th Congressional Districts** data are now available for the entire USA. These are the most accurate boundaries available, reflecting the expertise in the field as the market leading redistricting software package. The Congressional Districts data is packed with essential information for corporate legislative affairs departments, lobbyists, political consultants, political parties, and anyone else involved in political affairs. You will be able to answer questions such as "In which districts are my addresses located?" or "In which districts should I expend the most effort?" The 115th Congressional Districts data contains a nationwide area database



with boundaries of the 115th (January 2017-January 2019) Congressional Districts. It also includes demographic data from the 2010 Census and from the 2015 American Community Survey (ACS) 5-year estimates. The price is US\$495 and it is available online at the Caliper Store. www.caliper.com

NEW SOFTWARE RELEASES FROM GOLDEN SOFTWARE

Golden Software announces the release of **Surfer version 14**, a powerful 2D and 3D mapping, modeling and analysis program designed to facilitate a deeper understanding of geospatial data. Used by thousands of scientists, engineers, and educators across the globe, Surfer is a leading competitor in data modeling software. Surfer offers thirteen different gridding methods, including Kriging with variograms, to convert regularly or irregularly spaced XYZ data into uniform grids. Display a grid or

digital elevation model (DEM) as one of ten fully customizable 2D and 3D grid-based map types: contour, watershed, viewshed, shaded relief, color relief, 1-grid and 2-grid vector, grid value, 3D wireframe, and 3D surface maps. Enhance the display by adding post maps and base maps. Maps generated with Surfer are renowned for their accuracy, clarity, and vibrancy. The latest version of Surfer contains over 60 user-requested new features and 150 enhancements. www.GoldenSoftware.com