

NEWS & EMERGING TECHNOLOGY

FUGRO COMPLETES THE DEEP FOUNDATION TESTING FOR SIGNATURE TOWER IN DUBAI

Fugro has played a key role in the ground engineering of the **Dubai Creek Tower**, a vast slender structure which will comprise a central concrete column supported by a network of steel cable stays. Because of its significant height and design, ground engineering was critical in the programmed schedule and foundation design. Fugro was appointed to provide data collection and interpretation that could be relied upon by the construction contractor leading the foundation design

and engineering. The project specifications also called for a state-of-the-art, robust system including the use of fibre optics to carry out the intense static load test programme using **Fugro's Osterberg Cells® (O-cells)**. Close collaboration, as well as Fugro's worldwide network and engineering capabilities, allowed the team to successfully complete the preliminary testing scope of works in due time and set the right pace for the project.

www.fugro.com



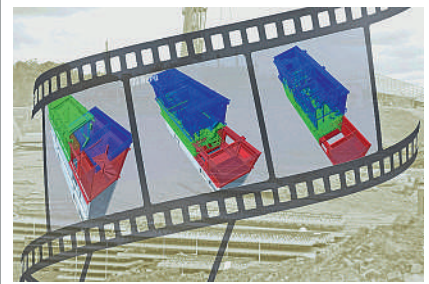
3D AT DEPTH PARTNERS WITH IQ3CONNECT

3D at Depth Inc. has partnered with **iQ3Connect Inc.** (iQ3) to deliver a new data visualization tool to help clients build, maintain, map and monitor subsea assets, environments and resources. The partnership leverages the unique features of 3D at Depth's subsea **LiDAR** data and the power of iQ3's innovative augmented reality (AR) and virtual reality (VR) platform to transform the value of offshore survey data. "Powered by iQ3's" cloud-based software platform, customers can access 3D at Depth's subsea LiDAR data through a secure, optimized web-based portal. The technology creates an immersive VR environment with true 1-to-1 3D scale models generated using repeatable, millimetric subsea LiDAR data inputs. Using a laptop, desktop or smart device, geographically dispersed teams can collaborate within a single VR session and be present in the same scene. iQ3Connect's underlying technology runs from a computer aided design (CAD) based platform allowing simulation of structures overlaid with subsea infrastructure. www.3DatDepth.com

BRYDEN WOOD AND 3D REPO LAUNCH CLOUD BASED 4D VIRTUAL REALITY MODELS

Bryden Wood and **3D Repo** have launched a new platform for visualising how construction projects change over time. Using Virtual Reality (VR) technology and 3D Repo's database driven Digital Construction Platform, the new 4D sequence visualisation tool gives users a new perspective on design and construction projects. Accessed using VR headsets the outputs will improve collaboration between project stakeholders, facilitate decision making and allow for better communication at all stages of a project. This functionality, together with enhanced online collaboration and visualisation features, is released as a Bryden Wood digital portal powered by 3D Repo. 4D modelling is a term used in the construction sector and refers to the fourth dimension of time, so a 4D schedule is a 3D model that includes the construction sequencing. This enables teams to analyse events on a time-line and visualise the steps required to complete tasks within the construction process.

www.3drepo.org



GEOSLAM CELEBRATES 5 YEARS IN BUSINESS WITH NEW HQ & RECORD GROWTH

Leading 3D mobile mapping technology specialist, **GeoSLAM**, is on track to achieve its ambitious growth plans in 2018 after relocating to new UK headquarters. The Nottinghamshire-based firm, which recently celebrated five years in the industry, has moved to Innovation House, a technology hub at Ruddington Business Park just outside the city of Nottingham. The new premises will enable the company to achieve its goal to double in size in the coming year. GeoSLAM, the global experts in 'go anywhere' 3D mobile mapping technology, develops handheld laser scanners that quickly and simply capture geospatial data on complex, indoor or difficult-to-access sites for the creation of 2D floorplans and 3D BIM models. GeoSLAM is a joint venture between **3D Laser Mapping** in Nottinghamshire and Australia's national science agency **CSIRO** (Commonwealth Scientific and Industrial Research Organisation). www.geoslam.com



NAUTIZ X9

THE ULTIMATE OUTDOOR-RUGGED PDA



TOUGH-AS-NAILS AND READY FOR ANY ENVIRONMENT

The NAUTIZ X9 ultra-rugged Android computer can handle any environment a field worker might encounter. Targeted for demanding field applications this IP67-rated device comes with plenty of computing power, a scanner, camera, 4G/LTE phone and NFC, plus all the capabilities that come with the Google GMS license, such as access to Play Store and Google Maps.

Learn more at www.handheldgroup.com/nautiz-x9

handheld

POINTFUSE LAUNCH POINT CLOUD SOFTWARE FOR DOTPRODUCT LASER SCANNERS

Users of **DotProduct 3D** handheld scanners can now produce 3D models at the touch of a button following the release of **Pointfuse for DP**. A powerful meshing solution that offers a one-button approach to converting DotProduct scan data into lightweight, intelligent 3D models, Pointfuse for DP can potentially reduce output file sizes by tenfold, dramatically improving downstream workflows including solid modeling and Virtual Reality environments. Offering a “one button” approach, Pointfuse for DP not only converts DotProduct point clouds into 3D models with accurate geometry, but also enables the discrete mesh surfaces within the models to be isolated and manipulated in third-party CAD software. Pointfuse for DP allows DotProduct users to access Pointfuse’s powerful 3D modeling engine, directly from the Dot3D software, providing a fast, easy and accurate method for generating 3D models. www.pointfuse.com



RUAS AND BANGOR UNIVERSITY WORK TOGETHER TO MAP ECOSTRUCTURES AROUND THE COASTLINE OF WALES

RUAS division are delighted to have recently partnered with **Bangor University** to work alongside them on a new project to map artificial and natural substrates at coastal locations across Wales. The project will raise awareness of eco-engineering solutions to the challenge of coastal adaptation to climate change. RUAS have joined them to help conduct a range of aerial mapping surveys at coastal locations in Wales where there is artificial hard substrate present, such as sea defences or coastal structures. Working in close partnership, RUAS will provide high quality aerial imagery and associated topographical information for sites around the coast of Wales for Bangor University to analyse. Using both fixed wing and multirotor drones, the project has been timed carefully to make the most of near-Spring low-tides and to ensure maximum visibility of all coastal structures. www.ruas.co.uk www.bangor.ac.uk



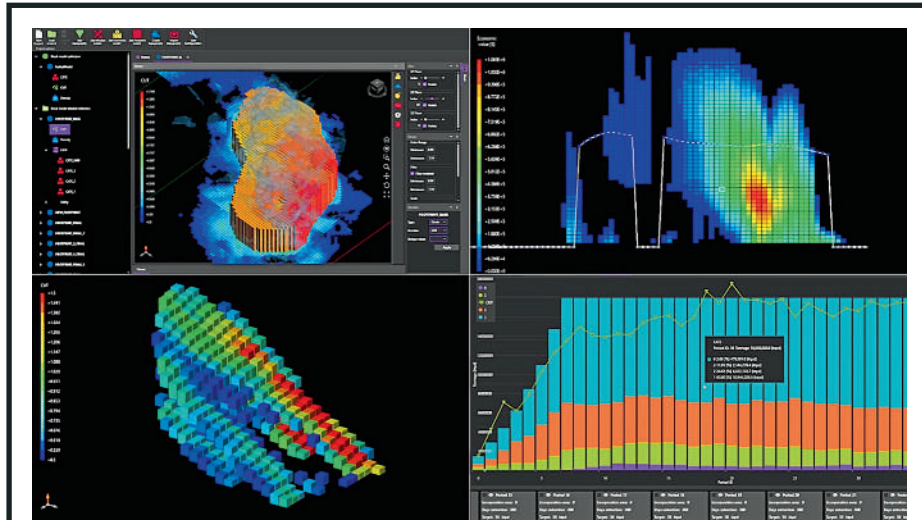
ESRI TECHNOLOGY WILL HELP POWER THE UNITED NATIONS' NEW GLOBAL DATA HUB

Esri and the **United Nations Statistics Division (UNSD)** are working with a number of member states to utilize a data hub that will allow countries to measure, monitor, and report on the **Sustainable Development Goals (SDGs)** in a geographic context. This new hub, called the **Federated System for the SDGs**, is based on **Esri's ArcGIS** platform and will use location intelligence to make it easier for countries to collect, analyse, and share the data required to monitor progress toward the SDGs. The SDGs are a set of global goals that include such objectives as poverty eradication, access to safe water, clean oceans, eliminating hunger, gender equality, climate action, peace and justice, education, and other important areas on the UN agenda. The Federated System explores new pathways for facilitating dataflows and action through data hubs. It then supports and informs data-driven decision-making by making the data open, usable, interoperable, and visual. www.esri.com

PHASE ONE INDUSTRIAL RELEASES IX CAPTURE 3.0 SOFTWARE FOR AERIAL PHOTOGRAPHY

Phase One Industrial has released **Phase One iX Capture 3.0** capture, control and RAW conversion processing software, designed specifically for use with Phase One Industrial aerial cameras. iX Capture 3.0 offers a new user interface, post processing capabilities and advanced workflow to help speed the production of distortion free RGB and CIR images, with exclusive support for processing 190MP images. Setting up the camera is easier now with a well-organized display of essential information, including exposure settings, time interval captures, available disk space, GPS data and frame count. A new interface option enables users to choose different skins and font sizes to match the ambient lighting condition of the aircraft and to ease operation on multiple screen sizes and resolutions. iX Capture 3.0 contains all necessary tools in a single package to enable users to capture, organize and process images into industry standard formats. <http://industrial.phaseone.com>





MAPTEK UNVEILS NEW STRATEGIC PANEL CAVING APPLICATION

A new strategic panel-caving product developed by **Maptek™** targets the most cost effective underground mining method in a transparent, analytical way while maximising productivity. Panel, or block caving, is widely considered the 'new frontier' as mining operations move towards underground methods. **Maptek CaveLogic** allows engineers to more effectively plan and reduce the financial risk associated with this subsidence mining method that involves massive volumes of material and large investment. Importantly for users, the calculations in CaveLogic are transparent. The planning engineer is in total control of tracking all of the variables and processes. This leads to better strategies with direct implications for improving business outcomes. CaveLogic is applicable to greenfield and brownfield projects. It can also guide management decisions at open pit operations where feasibility studies are required to evaluate the transition to underground mining. The system works directly with **Maptek Vulcan™** mine planning systems. www.maptek.com

LANDMARK INFORMATION SECURES MET OFFICE DIGITAL CONTRACT

Landmark Solutions has become a **Strategic Digital Partner** to the **Met Office**. Following a procurement exercise under the Government Digital Outcomes and Specialists framework, Landmark, in association with the digital experience design agency **Nomensa Ltd**, will together manage an initial two-year contract to implement a new consumer digital strategy for the UK's national weather service. The contract will see Landmark and Nomensa work in partnership to deliver a programme of work to optimise the Met Office's Consumer Digital portfolio and to drive market share, helping the Met Office to extend its reach and influence in the UK and beyond. This includes helping to implement a new consumer digital strategy by providing specialist skills, services and technology to the benefit of users of the Met Office's weather services. The aim is to enable users of the Met Office to utilise the data on any digital platform, and provide a rich, responsive service.

www.landmarksolutions.co.uk
www.nomensa.com

TOPCON AND BENTLEY ANNOUNCE KICK-OFF OF CONSTRUCTIONEERING ACADEMY

Topcon Positioning Group and **Bentley Systems** announce their collaborative **Constructioneering Academy** initiative. Topcon and Bentley have joined efforts to provide opportunities designed to allow construction industry professionals to learn best practices in constructioneering, a process of managing and integrating survey, engineering, and construction data, to streamline construction workflows and improve project delivery. The courses are designed in a dialogue format to allow Topcon and Bentley personnel to interact directly with attendees to cater the experience for their specific questions and demands. Topcon and Bentley's federated constructioneering technologies enable firms to gain unprecedented digital visibility and insights into their project outcomes, as compared to traditional construction workflows. The Constructioneering Academy will continue with additional sessions throughout learning centers located worldwide designed to reach industry professionals with hands-on training in real-world scenarios and workflows.

www.topcon.com www.bentley.com



U.S. EMBASSY OFFICIALLY ON THE MAP

On December 18, **Ordnance Survey (OS)** was joined by **Deputy Chief of Mission, Lew Lukens**, from the **U.S. Embassy** to accurately survey and map the new building. Mr. Lukens worked with **OS Surveyor, Steve Ives**, to capture the new Embassy and its surrounding site. Using precision GPS equipment, the surveying duo mapped the state of the art building to centimetre accuracy. The survey work was then added to Ordnance Survey's master map database, which contains over 500 million geographic features of the nation. Steve Ives added: "Over the last decade the Nine Elms area has completely transformed and there are some major projects still underway. This is an area of London, which has kept me busy, and I have been watching the new U.S. Embassy rise from its footings. It was great to be joined by DCM Lukens on the site and to officially capture the new building." www.os.uk



EAST VIEW GEOSPATIAL NOW OFFERING SWEDISH AERONAUTICAL CHARTS

East View Geospatial (EVG) is pleased to announce an agreement with **Luftfartsverket (LFV)**, Sweden's leading provider of civil and military aviation services, to offer digital aeronautical charts over Sweden. Containing a total of seven map sheets at 1:500,000 scale, the series offers customers the latest authoritative data for Sweden and portions of neighbouring countries, including Finland, Norway, Denmark, Germany and Poland. This agreement allows EVG to now distribute GeoTIFF charts in addition to the original paper charts. Customers will have the option of ordering the map sheets as original paper charts or as georeferenced charts that can be used in GIS software. Both formats include the most recent corrections made by LFV, and digital options mean that delivery time is greatly reduced. With this latest partnership, EVG continues its mission to provide customers with the most authoritative and up-to-date geospatial data from across the globe. www.eastview.com

HEXAGON MINING RELEASES IMPROVED SCHEDULE OPTIMIZER

Hexagon Mining released an improved version of its mine scheduling tool, which addresses the challenge of sequencing and modeling waste dumps with multiple access roads. **MineSight Schedule Optimizer (MSSO)** is used by hundreds of mines worldwide to determine the most productive cut mining sequence to achieve the highest project profitability. **MSSO Version 11** features a Multi-Entry tool, which responds to customers' haulage needs for open pit truck and shovel operations. Version 11 allows mine engineers to plan for haulage access to dumps via multiple entrances or ramps based on the mining location and available dumping points. If you are trying to determine the best routing destination for your material while accounting for sequencing destinations with multiple entries, then MSSO Version 11 is the answer. **Carl Brackpool, Product Manager** said, "The value to our customers is that low confidence in sequencing has a direct impact on time and cost, and MSSO 11 improves the haulage component significantly." www.hexagonmining.com



SSTL SHIPS REMOVEDEBRIS MISSION FOR ISS LAUNCH

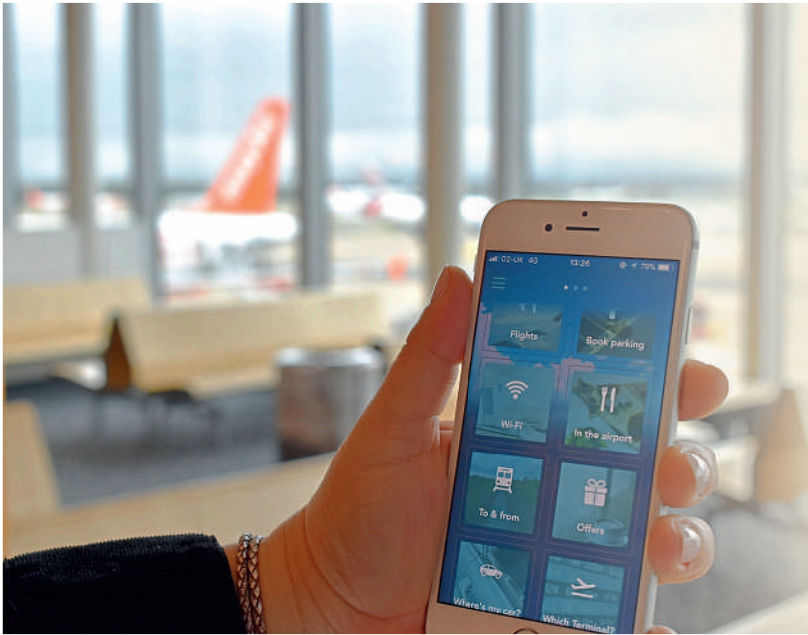
Surrey Satellite Technology Ltd (SSTL) has shipped the **RemoveDEBRIS** spacecraft to the Kennedy Space Centre in Florida for launch to the International Space Station (ISS). RemoveDEBRIS is an **Active Debris Removal (ADR)** demonstration mission led by the Surrey Space Centre at the University of Surrey. Once in orbit the ADR experiments on board the spacecraft will be performed. In the first of two capture experiments a net will be discharged to demonstrate net capture in space. The second capture experiment will see a harpoon launched at a deployable target plate made of representative satellite panel materials. The third experiment involves vision-based navigation by deploying the second cubesat and demonstrating rendezvous navigation using cameras and a LiDAR. Finally, the RemoveDEBRIS spacecraft will deploy a large dragsail to speed de-orbit, where it will burn up as it enters Earth's atmosphere. www.sstl.co.uk

HERE ANNOUNCES HERE TRACKING

In a typical year, shipping companies lose more than 1,000 containers at sea; the airline industry mishandles more than 20 million pieces of luggage; and enterprises lose billions of dollars when road freight is stolen, misplaced or routed inefficiently. **HERE Technologies** is helping industry maximize logistics efficiencies with the launch of **HERE Tracking**, a powerful cloud Platform as a Service (PaaS) for low-energy, high accuracy and real-time tracking of goods, devices and people both indoors and outdoors. HERE Tracking helps users maintain an accurate and trusted real-time and historical record of items through space and time. The service, built on the HERE Open Location Platform, combines several HERE capabilities and technologies including: industry-grade maps for indoor venues and outdoor environments with geo-coding capabilities, highly accurate and energy-efficient indoor-outdoor positioning technology with offline capabilities that enables conventional tracking devices to work longer due to superior battery management. www.here.com

JOINT EXERCISE BETWEEN THE BRITISH ROYAL NAVY AND THE ISRAELI NAVY

Elbit Systems Unmanned Surface Vessel (USV), the **Seagull™** participated in a recent joint exercise between the **Israeli Navy** and the **British Royal Navy** ("RN") in Haifa Bay. During the exercise the USV performed a Mine Counter Measure (MCM) mission, scanning and charting a secure path for HMS Ocean, the RN helicopter carrier. Once encountering Mine-Like-Objects, the Seagull alerted HMS Ocean to avoid them, thus securing its safe route. The Seagull performed the mission while being remotely operated from a Mission Control Station onshore. Additionally, the Seagull took part in a tactical maneuvering exercise and sailed in formation with the Navy vessels and British RN's carrier. In addition to MCM capabilities, the Seagull features switchable, modular mission payload suites. Seagull offers navies a true force multiplier delivering enhanced performance to naval operations, reducing risk to human life and dramatically cutting procurement and operating costs. www.elbitsystems.com



APP, APP AND AWAY - GATWICK LAUNCHES FIRST PASSENGER APP

Gatwick's new app – one of several passenger-facing digital innovations offers passengers personalised flight alerts, real-time queue updates for check-in and security, intuitive navigation using beacon technology and shopping, restaurant and airport offers. Other initiatives in Gatwick's 'digital transformation' programme include advanced chat bots, augmented reality way-finding and the airport-wide use of the Internet of Things. The new app means that holidaymakers and business travellers can enjoy a more seamless experience when travelling through Gatwick as it boasts a range of features including: Personalised flight information, Real-time queue updates, Intuitive maps and Shopping and eating offers. Personalised flight information pushed to your phone includes boarding status and gate access, which means passengers can enjoy their time at the airport without having to hunt for flight information screens. www.gatwickairport.com

AVENZA MAPS IOS APP LAUNCHES IN THE GEOINT APP STORE

Avenza Systems Inc. is proud to announce that it has officially launched **Avenza Maps®**, its market-leading, award-winning mobile mapping app, on the **GEOINT** App Store. Created by the United States National Geospatial-Intelligence Agency (NGA), the GEOINT App Store is exclusively for Department of Defence (DoD) and Intelligence Community (IC) personnel. Avenza Maps is available for iOS devices to all DoD and IC personnel by creating a GEOINT account using existing federal credentials, such as Common Access Card (CAC) or Personal Identity Verification (PIV). Once registered, the Avenza Maps app can be downloaded without cost to their mobile device. **Ted Florence, president of Avenza** said, "With the launch of Avenza Maps in the GEOINT App Store, we're proud to be partnering with the NGA to bolster the value of offline maps for critical missions, safety, and locational awareness," www.avenza.com



BLUESKY AERIAL PHOTOS HELP DARLINGTON COUNCIL MAP OUT ECONOMIC GROWTH

High-resolution aerial photography from **Bluesky** is helping **Darlington Borough Council** produce plans of Council owned land, in order to promote growth and development in the North East of England authority. Primarily used by the Estates and Property Section of the Economic Growth Group, the Bluesky imagery helps locate and identify previously undeveloped land parcels, producing maps for acquisitions and disposals, right to buy and tenancy agreements. Used in combination with GPS surveying, the Bluesky photomaps provide comprehensive ground detail, are up to date and accurately match the Council's Ordnance Survey mapping. Darlington Council currently uses the Bluesky data to map out proposed developments, including land ownership and potential restricting constraints – from Conservation Areas to Civil Aviation restrictions. The data also helps identify underground features, evidenced by earthworks or ground disturbance, and grid locations can be extrapolated from a variety of other sources, including Highways data, architects' plans and the Land Registry. www.bluesky-world.com

GEOPLACE RECOGNISED AS AN INVESTOR IN PEOPLE

GeoPlace LLP has been awarded **Investors in People** accreditation demonstrating their commitment to high performance through good people management. **Paul Devoy, Head of Investors in People**, said: "We'd like to congratulate GeoPlace. Investors in People accreditation is the sign of a great employer, an outperforming place to work and a clear commitment to success. GeoPlace should be extremely proud of their achievement." Commenting on the award, **Richard Mason, Managing Director of GeoPlace** said: "GeoPlace's staff are our greatest asset. Our people are talented and committed and like working here because they feel challenged, can collaborate with others and enjoy freedom in their work. Our expertise, along with our ability to manage and define our work effectively and efficiently to meet changing business, user and industry needs in a robust, adaptable and professional manner allows us to achieve the results we do. I am delighted that we have been recognised as an investor in people." www.geoplace.co.uk www.investorsinpeople.com

MONSANTO AND BOUNDLESS COLLABORATE FOR OPEN SOURCE GIS CONTRIBUTIONS

Boundless and **Monsanto Company** announced their collaboration on the contribution of open source geospatial code back to the Free and Open Source Software for Geospatial (FOSS4G) community. Among the contributions is an **OAuth Plugin** that was donated to enable modern authorization of users within the **Quantum GIS (QGIS)** open source desktop project. This contribution enables the users of the most widely used open source desktop GIS software to utilize user-based authentication to determine what data on the system the user can access. The code only covers the authentication process and does not share any company information or data from Monsanto or any of its customers. This contribution marks part of a larger open source initiative Monsanto is undertaking. This code has allowed the company to have a smoother authentication system and allows employees easier access to the data they need while in the field. www.monsanto.com www.boundlessgeo.com



PERUVIAN GOVERNMENT: "SATELLITE INVESTMENT RECOVERED AFTER FIRST YEAR OF OPERATIONS"

PerúSAT-1 has completed its first year of operation and the Peruvian government has recently declared that in that time, the investment it has made into the satellite programme has already been recouped. The Earth observation satellite, built by **Airbus** in a record time of only two years, has acquired more than 71,000 images, which have been delivered to more than 80 organisations across Peru. Peruvian specialists from the National Satellite Image Operation Centre (CNOIS) located in Pucusana, near Lima, have been in control of the satellite since handover from Airbus on December 7th, 2016. PerúSAT-1 is the most advanced satellite in the region. The Earth observation satellite system PerúSAT-1 provides very high resolution imagery for multiple applications, including security and defence, agriculture, mining, illegal deforestation, risk prevention, mapping, urban planning, land use, ecological economy zoning, countering drug trafficking, among others. www.airbusdefenceandspace.com

FINDING DATA RANKS AS TOP CHALLENGE FOR GEOSCIENCE DATA MANAGEMENT

Accessibility and security are among the top challenges geoscience organizations face when managing data, according to **GeoSoft's 2017 Geoscience Data Management Report**. Close to half of respondents rank the inability to find and access data with one integrated search tool as the most important challenge, while data security is a close second. The 2017 survey is an expanded version of a similar survey completed in 2015. This year's report provides more insight into the challenges geoscience organizations face when implementing data management solutions or leveraging the cloud for data management and access. GeoSoft received 1400 responses from 1072 organizations in 115 countries. Half of the respondents work in the mineral resources sector, while the remainder represents the government, energy, near surface and education sectors. About 70% are geoscientists. Most respondents (83%), regardless of their role or organization, ranked data management as a critical or top five issue for their organization. www.geosoft.com

CALIPER CORPORATION (MAPTITUDE, TRANSCAD) JOINS THE USGS COALITION

Caliper Corporation announced that it has become a member organization of the **U.S. Geological Survey (USGS) Coalition**. The USGS Coalition is an alliance of more than 80 organizations united by a commitment to the continued vitality of the USGS and its ability to provide critical data and services to the nation. The Coalition supports increased federal investment in USGS programs that underpin responsible natural resource stewardship, improve resilience to natural and human-induced hazards, and contribute to the long-term health, security, and prosperity of the nation. Caliper Corporation mapping software has a long, productive relationship with the USGS. The **Maptitude** and **TransCAD** applications directly support USGS digital elevation model data, topographic maps, and aerial imagery. **Vice President Stewart Berry** said, "With nearly a 35-year relationship with USGS, we look forward to growing our collaborative efforts with the organization through our membership in the USGS Coalition," www.caliper.com



TELENT ANNOUNCED AS CONTROL ROOM AWARDS PLATINUM SPONSOR

APD Communications revealed leading UK intelligent transport solutions and network maintenance provider **telent Technology Services** as the Platinum Sponsor for the first Control Room Awards. APD, a company specialising in mission critical solutions for the emergency services, has launched the inspiring awards to celebrate unsung heroes within emergency services and other critical control rooms in the UK. The **Control Room Awards** will recognise the life-changing work of control room personnel across the emergency services and within a variety of public and private sector organisations. Warwick-based telent is a delivery partner of APD and provides technology and network services to enable organisations to improve and maintain mission-critical communications networks. **Mike Isherwood, APD's Managing Director**, said: "We're delighted to welcome telent on board – telent's work supporting mission-critical communications networks makes them the perfect partner for the first Control Room Awards." www.apdcomms.com



GSSI SHOWCASES THE NEW UTILITYSCAN® GPR SYSTEM AND PROFILER™

GSSI highlighted its new UtilityScan® GPR System and Profiler™ EMP-400 Conductivity Meter at American Geophysical Union (AGU) 2017 Fall Meeting, held in December 2017. Also showcased was the Profiler™ EMP-400 Conductivity Meter, a powerful electromagnetic (EM) induction tool that enables reliable and accurate examination of soil conditions and subsurface targets on both small and large-scale sites. The new UtilityScan system compact size makes it extremely portable and easy to maneuver in tight survey areas. It features a robust new wireless antenna that can handle required data rates and is ruggedly built to withstand challenging field conditions. The UtilityScan's electrical design uses GSSI's patented HyperStacking technology, which increases depth penetration in challenging soils while also providing high near surface data resolution. The unit also has a backup Ethernet connection if Wi-Fi is not desired or allowed on a particular jobsite or facility. www.geophysical.com



URTHECAST AND SIIS SIGN AGREEMENT FOR THE GLOBAL DISTRIBUTION

UrtheCast Corp. and its subsidiary, the Earth Observation company **Deimos Imaging**, announced the signing of an agreement with **SI Imaging Services** ("SIIS"), a leading provider of remote sensing satellite data and exclusive worldwide marketing and sales representative of the KOMPSAT series, for the mutual global distribution of their respective product portfolios. The space assets of Deimos Imaging and SIIS result in a wide portfolio of X-band SAR and optical data in a wide range of resolutions, from 22 m to 0.4 m per pixel. The combination of radar with very high-resolution optical imagery will allow observation of the Earth day and night, regardless of weather conditions, and is intended to provide a constant asset monitoring service. The assets of SIIS now combine with the recent strategic partners aligned with Deimos Imaging, resulting in a multi satellite, multi resolution virtual constellation, to deliver imagery services and geo-analytic applications to customers globally.

www.urthecast.com www.si-imaging.com

EARTH-I CHOOSES SPACEMETRIC FOR IMAGE AND VIDEO PROCESSING

British 'New Space' pioneer **Earth-i** announced that images and video from its new prototype satellite launched early January 2018 will be managed, catalogued and geometrically corrected using software from Swedish photogrammetry and imagery specialist, **Spacemetric**. Earth-i is building the first commercial constellation in the world to provide full-colour video and the first European-owned constellation able to provide both video and still images. Footage recorded by Earth-i's fleet of satellites will be available for analysis within minutes of acquisition. Spacemetric's Keystone software will be installed at Earth-i's Data Processing Centre in Guildford, UK and will perform two vital processes: Pin-pointing the precise location of each pixel of every image and video frame and Correcting for distortions owing to the motion of the satellite, the shape and rotation of the satellite and effects due to the Earth's terrain. <http://www.earthi.space>

Notice Board™

A web mapping application which brings mobile-friendly smart searching to community websites.



What day should we put our green recycling bin out?

Find a vet for Patch

Find out more: cdcp.io/nbd/

Who's our local councillor?

Jack's football Sunday 9.30am - Black Park

Where is it?

Call Highways - yet more potholes!!! ☹️

Where can we recycle our old fridge?

**CANADIAN COMPANY
TIMBERCRAFT
CONSULTATION CHOOSES
SUPERPAD**

The global GIS software provider, **Supergeo Technologies Inc.**, is excited to announce that the Canadian consulting firm **Timbercraft Consultation Inc.** selected **SuperPad** to record spatial data. Specialized in geographic data collection, Timbercraft Consultation provides various professional services to both the public and private sectors, including precise measurements, GPS surveying and mapping, forestry consultation, environmental impact studies, and so on. Because most services provided by Timbercraft need many field works, they continuously seek reliable, powerful, and versatile mobile GIS software for a long time. Developed by Supergeo product team, SuperPad is a mobile GIS originally designed for handheld devices using Windows Mobile OS, but now it is available on Windows OS as well. Integrating advanced GNSS and GIS technologies, SuperPad not only can display and edit spatial data with or without internet connection but also can collect high accuracy GPS positioning data via post-processing and NTRIP service. www.supergeotek.com

**EUMETSAT TAKES STEPS TO
EXTEND METEOSAT AND EPS
OPERATIONS**

At its 88th session, the **EUMETSAT** Council agreed to exploit the Meteosat second generation (MSG) and EUMETSAT Polar System (EPS) satellite systems for another seven years and opened the votes enabling the 30 Member States to formalise associated financial commitments in the course of 2018. These decisions reflect the substantial impact of observations from Meteosat and Metop satellites on weather forecasts at all ranges and take into account the latest assessment of the performances and foreseen lifetime of all satellites in orbit and the forthcoming launch of the last Metop satellite (Metop-C) planned in the autumn 2018. The Council also approved two ground segment contracts for the next generation Meteosat Third Generation and Jason-CS/Sentinel-6 systems currently under development. The Payload Data Acquisition and Processing (PDAP) component of the Jason-CS ground segment will acquire data from the Copernicus Jason-CS/Sentinel-6 satellite and perform end-to-end processing. www.eumetsat.int

**LINEAR DRAFT - 3D BIM OVERHEAD LINE ELECTRIFICATION
DESIGNER**

Zebraware Ltd, a leading global software vendor based in the United Kingdom, have announced the release of their newest software product – **Linear Draft**. Linear Draft is a 3D & BIM Overhead Line Electrification (OLE) design package. It's available off-the-shelf and is compatible with popular computer-aided design packages such as Bentley Systems® Microstation V8i™, Connect Edition™ and AutoDesk® AutoCAD 2018™. Linear Draft is a flexible approach to OLE design, enabling users of all backgrounds, drafts-people and engineers alike, to deliver detailed 3D BIM OLE models and construction deliverables within hours. Linear Draft is a unique application for many reasons, but the most important to note, is that Linear Draft is a stand-alone platform. **CEO of Zebraware Ltd, Jon Mercer** says "We're committed to augmenting and enhancing our expert customers' capabilities in a wide variety of engineering and scientific fields and Linear Draft embodies that commitment." www.lineardraft.com

**MAXAR TECHNOLOGIES APPOINTS MIKE GREENLEY AS GROUP
PRESIDENT OF MDA**

Maxar Technologies Ltd. announced the appointment of **Mike Greenley** to serve as Group President of MDA, a Maxar Technologies company with internationally recognized leadership in space robotics, satellite antennas and subsystems, surveillance and intelligence solutions, and defence and maritime systems. Reporting to the CEO of Maxar, Mr. Greenley assumes responsibility for taking MDA to the next level of growth and profitability. His responsibilities will include all of the MDA lines of business and its 1,900 employees. "I am extremely pleased to announce this appointment, given Mike's outstanding track record and over 20 years of experience leading profitable growth for aerospace and defence companies in Canada and internationally", said **Howard L. Lance, president and chief executive officer of MDA**. "MDA is one of Canada's most innovative technology companies with an earned reputation as a trusted partner, due to its decades of industry leadership. www.maxar.com

**MARSS TO INSTALL
LONG-RANGE
SECURITY AND
CLIMBER DETECTION
SYSTEMS**

MARSS has secured a refit contract for the installation of their automated security systems **NiDAR** and **CLIMBERguard** onboard specialist merchant vessels. This project will integrate security radar and daylight/infrared cameras, as well as climber detection capability to deliver layered 360° surveillance for the monitoring, detection and tracking of surface objects in the vicinity of a vessel. The NiDAR system developed by MARSS is providing all-round air, surface and underwater perimeter security to protect high value maritime assets. Operating autonomously and discreetly 24/7, NiDAR tracks both known and unknown objects around a vessel, while smart software algorithms automatically analyse and rank threats, triggering alerts to notify users as required. Climber detection is achieved with the self-contained CLIMBERguard units that combine micro-radars, imaging sensors and processing to automatically detect, classify and track approaches close to and scaling the vessel sides. www.marss.com

**UNLOCK INFORMATION
FROM IMAGERY FOR USE IN
MAPS AND ANALYSIS**

Esri has announced the publication of **Imagery and GIS: Best Practices for Extracting Information from Imagery**. The book teaches the fundamentals of collecting imagery via remote sensing systems and then using the imagery within a geographic information system (GIS). Imagery is at the heart of GIS technology, providing most of the data in maps. The data comes in the form of aerial photos, thermal and satellite images, digital elevation models, and scanned maps. **Imagery and GIS: Best Practices for Extracting Information from Imagery** shows how imagery can be integrated into a GIS for mapping and analysis. Readers will learn how to select the correct imagery for their GIS projects, conduct image analysis, efficiently manage and serve imagery datasets, and accurately extract information from imagery. Helpful resources in the book include case studies, along with a section on acronyms and a glossary of imagery, remote sensing, and GIS terms. www.esri.com

