

COMPANY SHOWCASE

Our regular 'Company Showcase' feature is the opportunity for suppliers of goods and services from all branches of the geomatics industry to acquaint readers with their latest offerings. Innovation is key to success in today's geomatics market place... one where traditional boundaries are being blurred by the latest trends in convergence and functionality, and it is vital that users can take advantage of these technological advances.

Surveying equipment now incorporates GNSS, GIS, Laser-based and communications, as well as optical capabilities to offer ever higher accuracy and greater local processing power at lower cost. Remote Sensing, in the widest sense, achieves new levels of resolution and precision from Laser, LiDAR, satellite, and aerial sensors, including those carried aboard a new generation of UAVs. The huge volumes of geodata captured by these and other sensors and devices are incorporated in ever more innovative information and location based services that support public and private sector decision makers at all levels, as well as citizens.

Look also for advances linked to the convergence between technologies, from CAD and BIM suites now incorporating GIS and decision support tools to smart phones used to collect and disseminate location-tagged data for commercial and citizen-oriented Open Source applications. For field use, consumers are now spoiled for choice with a wide variety of portable rugged and semi-rugged geodata collection devices based on PDA, tablet and notebook computers. And, of course, the advent of data and software as hosted services via the Cloud presents new challenges and opportunities for users everywhere.

This is an exciting decade for all sectors of the geomatics industry, with innovation powered by creativity, convergence and advances in several allied technologies. Watch this space to keep yourself up to date!

Next Available Showcase:
Spring 2020
(Published March/April)
Entry Deadline: January 2020

COMNAV
TECHNOLOGY

1

SinoGNSS[®]
By ComNav Technology Ltd.

T30 GNSS Receiver



Founded in 2012, ComNav Technology is a world leading hi-tech company focus on high-precision BDS/GNSS technologies. ComNav Technology engages in R&D, manufacturing, sales and services, aiming to provide worldwide customers with high-precision GNSS chips, modules, terminals, software and solutions across industries. We committed to be an innovator and leader in high-precision BDS/GNSS technologies and applications.

Until 2019, ComNav Technology has sold its products and solutions to more than 100 countries with total quantity of more than 300000 units' modules (receivers) in 10 different industries.

With a strong tradition of innovation, ComNav Technology is continuing to invest at least 20% annual revenue into R&D every year to pursue the best of GNSS technologies and solutions. The final goal is to provide the best products and solutions to worldwide customers.

INTERGEO 2019
Visit us at Hall Number: 1, Booth
Number: F1.013

SinoGNSS by ComNav Technology
Building 2, No.618 Chengliu Middle Rd.
201801 Shanghai China
Tel : +86 21 64056796
Fax: +86 21 54309582
Email: sales@comnavtech.com
www.comnavtech.com

EOS POSITIONING

2



Eos Positioning Systems® (Eos) designs and manufactures the high-accuracy Arrow Series™ GNSS receivers. Arrow GNSS receivers are able to Bluetooth® connect to any mobile device (e.g., iOS, Android, Windows) and provide submeter/RTK locations to any data-collection app. Eos makes it easy and affordable to achieve submeter or centimeter accuracies in your preferred mobile workflows. Each Arrow GNSS receiver is manufactured by hand in Montreal, Quebec, by a team of technicians who were trained by those who created the world's first Bluetooth RTK GNSS receiver for iOS. Our mission is to provide a positive customer experience to every customer, backed by a superior product design. Our products are used globally in local government, utility, forestry, archaeology, infrastructure, engineering, construction, and other like-minded professionals.

Contact Eos for more details.

Visit Eos at INTERGEO,
September 17-19:
Hall: 3
Stand number: D3.068



Eos Positioning Systems
A Canadian Company
Tel: +1 450 824 3325
e-mail: info@eos-gnss.com
www.eos-gnss.com

EUROPEAN SPACE IMAGING

3



RELIABLE EXPERTS
**RELIABLE
INSIGHTS**

Based in Munich, Germany and established in 2002, European Space Imaging is a leading premium supplier of global very high resolution (VHR) satellite imagery and derived services.

With over 15 years' experience, European Space Imaging have developed a reputation for expert and personalised customer service and an unbeatable track record for supplying tailored very high resolution imagery solutions to meet the diverse projects and requirements of their customers.

Introducing EarthWatch & SecureWatch

Accessed via an online browser, these innovative subscription-based services provide online access to global content layers in one consolidated interface. With one subscription you can gain access to up-to-date very high resolution satellite imagery only hours after acquisition in addition to more than 6 billion square kilometres of archive imagery.

EARTHWATCH LIVE DEMO
Intergeo, Stand F1.053

European Space Imaging
Arnulfstrasse 199
80634 Munich, Germany
Tel: +49 (0) 89 130 142 0
e-mail: info@euspaceimaging.com
www.euspaceimaging.com

HANDHELD

4

handheld

RUGGED COMPUTERS FOR TOUGH ENVIRONMENTS

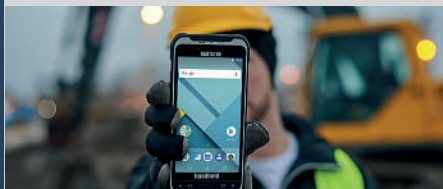
Handheld is a manufacturer of ultra-rugged mobile computers built rugged from the inside and out.

Our rugged tablets and handhelds can withstand tough field work days, with water, dust, shock and extreme temperatures.



The NAUTIZ X6 ultra-rugged Android Phablet. A phablet, you ask? Yes, it has the large-screen functionality of a tablet, with the work-anywhere ruggedness of a handheld. Get all the details at: www.handheldgroup.com/nautiz-x6

Together with a strong network of reselling partners Handheld supply rugged computers to a wide area of field applications, often in the most demanding environments.



The NAUTIZ X6 ultra-rugged phablet comes with a 6-inch capacitive touchscreen and a superior u-blox NEO-M8N receiver. Learn more at: www.handheldgroup.com/nautiz-x6

Handheld has subsidiaries worldwide, including local service partners all over the world to ensure a personal level of assistance as well as quick turnaround time for any repairs. Contact us today to learn more!

Visit Handheld at INTERGEO:
Hall 3, booth B3.075



Handheld Group AB
Tel HQ: +46 (0)510 54 71 70
info@handheldgroup.com
www.handheldgroup.com

HEXAGON

5



Hexagon is a global leader in sensor, software and autonomous technologies. We are putting data to work to boost efficiency, productivity and quality across industrial, manufacturing, infrastructure, safety and mobility applications.

Our technologies are shaping urban and production ecosystems to become increasingly connected and autonomous – ensuring a scalable, sustainable future.

Hexagon (Nasdaq Stockholm: HEXA B) has approximately 20,000 employees in 50 countries and net sales of approximately 3.8bn EUR. Learn more at hexagon.com and follow us @HexagonAB.

INTERGEO
Stuttgart, Germany
17-19 September 2019
Hall 1, Booth B1.022

Smart City Expo World Congress
Barcelona, Spain
13-15 November 2019
Booth Number C-343

Consumer Electronics Show
Las Vegas, USA
7-10 January 2020
Booth Number CP-15



Hexagon Head Office
Hexagon AB (Publ)
P.O. Box 3692,
SE-103 59 Stockholm, Sweden
Lilla Bantorget 15
SE-111 23 Stockholm, Sweden
Telephone: +46 8 601 26 20
Fax: +46 8 601 26 21

JUNIPER SYSTEMS

6



Need more versatility in your data collection work? Check out the Geode™. Our sub-metre GNSS solution is more versatile than ever, now connecting to Apple® iOS® devices!

Small and lightweight, the Geode contains both receiver and antenna inside, and features intuitive, one-button operation. Multiple correction sources deliver precise, real-time, reliable data.

Now choose the OS that's right for you: Windows®, Windows Embedded Handheld, Android® or iOS. With multiple models to fit your needs, it's an easy choice.

Pair the Geode with our Mesa 2™ or CT8 Rugged Tablets, or CP3 Rugged Smartphone, for a complete, dependable data collection solution.



**See us at InterGeo:
Hall 1, Stand D1.046**

Juniper Systems Ltd
Bromsgrove, near Birmingham, U.K.
Tel +44 (0) 1527 870773
info@EMEA@junipersys.com
www.junipersys.com

KOREC

7



At KOREC, it's our relationship with our customers that sets us apart from the rest.

We are bringing the survey & construction industries into the 21st century, with advancements such as on-demand equipment rental and bespoke, field to finish solutions with Professional Services.

We recently launched an hourly pricing model for Trimble Catalyst, which provides low cost, high accuracy GNSS positioning from metre down to cm accuracy.

And our new Professional Services division delivers access to cutting edge technology that may otherwise be out of reach – such as the MX9 vehicle mounted mobile mapping system.

Alongside Trimble, we are also proud to represent GeoSLAM (handheld, mobile mapping), senseFly (fixed wing UAVs) and Parrot (rotary UAVs) for the latest, most ground-breaking mapping products.

We believe that good software is as vital as hardware, which is why we've invested in the development of our K-Mobile software – which works seamlessly with Trimble software to enable fast and easy data collection in the field.

KOREC Group
UK 0345 603 1214
IRE: 00353 1 456 4702
info@korecgroup.com
www.korecgroup.com

PHASE ONE INDUSTRIAL

8



Aerial cameras and image processing systems built for multiple applications such as mapping, surveying, agriculture, inspection, 3D modelling, machine vision, homeland security, and more.

See our range of high-resolution cameras for aerial imaging applications, which include our fully integrated 190 megapixel, 4-Band multi-spectral, and iXM-RS 150MP and 100MP solutions. Our iXM 100MP and 50MP cameras are ready for integration with multiple UAV platforms. Also on display, our new long-range lenses - RSM 300mm AF, designed for aerial and ground inspection, RS 180mm, and 150mm MK II.

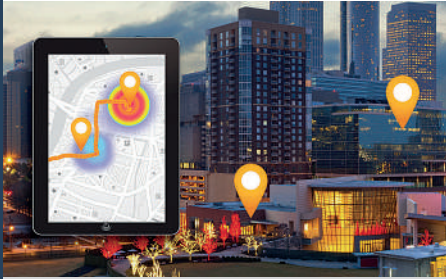
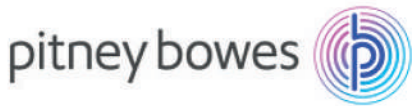
• **Cameras** - 50MP-190MP - performance, reliability and accuracy in low weight & cost-effective systems.

• **Aerial systems** - RGB, CIR, NIR, 4-Band - Complete systems offer easy integration into existing or new setups, manned or unmanned.

• **Software** - iX Plan, iX Flight, iX Capture - Quickly and easily plan and lighten the workflow for operator, pilot and image processor.

**See us at:
Intergeo 2019: Stand: H1.022 (Hall 1)**

Phase One Industrial
Email: industrial@phaseone.com
industrial.phaseone.com



Transform your location data into greater value - Digital Transformation powered by Location Intelligence

Everything geospatial challenge is addressable with software and data crafted to unlock the full potential of location intelligence.

- Engage clients and constituents more effectively
- Optimise service planning and delivery
- Make intelligent infrastructure decisions
- Drive digital self-service initiatives

Achieve location intelligence through a software and global data portfolio chosen by leading businesses and local government across the world.

- Over 1400 local authorities
- 25 out of the top 35 Insurers
- 16 of the top 25 Commercial Banks
- 25 out of the top 30 Telecom Providers

Surface smarter insights by understanding the relationships between people, places and things.

Pitney Bowes and Partners invite you to visit us at the Intergeo 2019 from 17.- 19. Sept. in Stuttgart/Germany. Meet our experts, see show cases, learn from live demos!

For free tickets or booking 1:1 meetings on-site, just email us to Kerstin.kraemer@pb.com

Find us in Hall 1, Booth I1.040

Pitney Bowes Software

The Smith Centre The Fairmile, Henley-on-Thames Oxfordshire RG9 6AB
 Phone: +44 1491 416600
www.pitneybowes.com



You need a precise position for your mobile GIS?

The ppm 10xx GNSS Sensor System gives you centimeter accuracy even in narrow streets and under canopy.

GPS - GALILEO - GLONASS - BEIDOU

Attached to a tablet or "all on the pole".

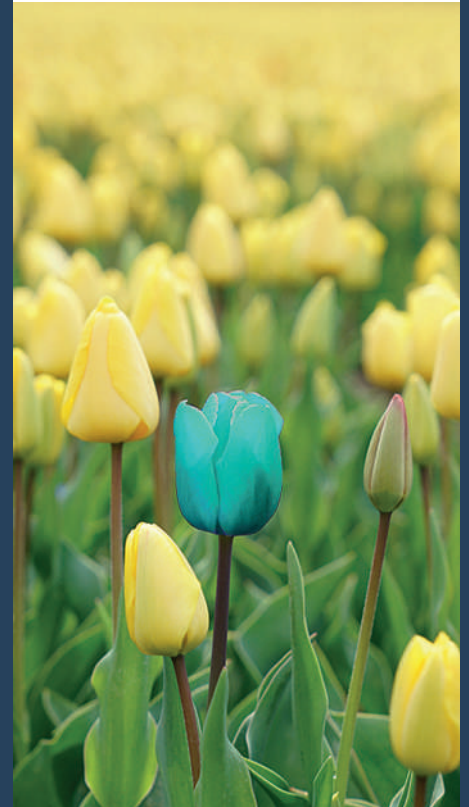
More information www.gps4gis.de
 Our GIS-partner: www.ili-gis.com

Visit us at INTERGEO in Stuttgart Hall 1, Booth E1.004



ppm GmbH

Grube 39A, D-82377 Penzberg
info@ppmgmbh.com
www.ppmgmbh.com



GET NOTICED IN THE CROWD

You are working in an ever more competitive marketplace and to rise above the noise, your key sales and marketing messages must be seen, understood and acted upon.

To achieve these critical business goals, every geospatial company in the world needs to stop talking about what it is they can do and focus on what it is they can do for their prospects and customers.

That's what we do for our clients

Quarry One Eleven

questions@quarry-one-eleven.com
www.quarry-one-eleven.com



www.riegl.com

Smart Waveform LiDAR Technology

RIEGL's dedication to "Innovation in 3D" is presented in their continuous advancement of their product portfolio for terrestrial, mobile, airborne, and unmanned laser scanning.

RIEGL produces commercial LiDAR systems and focuses on pulsed time-of-flight laser radar technology in multiple wavelengths. RIEGL's core "smart waveform" technologies provide pure digital LiDAR signal processing, unique methodologies for resolving range ambiguities, multiple targets per laser shots, optimum distribution of measurements, calibrated amplitudes and reflectance estimates, as well as the seamless integration and calibration of systems.

With a wide array of performance characteristics RIEGL laser scanners meet the requirements of most diverse applications in surveying.

Come experience the high performance RIEGL product portfolio at:

INTERGEO 2019
Stuttgart, September 17-19
Booth No. 11.024

Commercial UAV Expo Americas 2019
Las Vegas, October 28-30
Booth #300

RIEGL Laser Measurement Systems
3580 Horn, Austria
phone: +43 2982 4211
e-mail: office@riegl.co.at
www.riegl.com

NVIDIA
3D VISION REPLACEMENT

3D PluraView



The new reference of passive 3D stereo monitors

-  4 different models (22", 24", 27" 28") with 2 housing designs
-  Increases the user motivation and acceptance
-  Completely flicker free for relaxed work
-  Window seat-ready thanks to double brightness
-  Highest resolution per eye from full HD up to 4K (UHD) @ 10bit
-  Established for 14 years Plug & Play technology
-  Certified e.g. from ESRI HEXAGON and TRIMBLE

Request further information or demo device: www.pluraview.com



83714 Miesbach, Germany
Phone: +49 (8025) 9930-0
info@schneider-digital.com
www.pluraview.com



Senceive are the world's leading supplier of wireless Remote Condition Monitoring solutions.

Wireless Remote Condition Monitoring solutions are a digital, automated alternative to manual methods of monitoring. These highly adaptable solutions are ideal for monitoring the health of various geotechnical and structural assets across the rail, construction and utilities sectors.

Senceive's Remote Condition Monitoring solutions offer:

- 24/7 asset monitoring
- A wireless solution - comms and mains power free
- A long battery life and robust design, reducing the need for costly maintenance
- Control of trigger levels and reporting rates of monitored parameters
- SMS and email alerts if thresholds are triggered
- The ability to interface with 3rd party sensors and visualisation software

Visit Senceive on stand D1.017 in Hall 1, where we will be showcasing our latest innovations and answering questions on Remote Condition Monitoring.

Senceive
+44(0)20 7731 8269
info@senceive.com
www.senceive.com



At Silicon Sensing Systems we develop and manufacture precise, ultra-reliable, highly affordable silicon MEMS gyroscopes, accelerometers and inertial systems. We are an Anglo-Japanese joint venture that has delivered over 30 million sensors worldwide since our inception 20 years ago.

Our products suit all applications where functionality, performance, survivability and integrity are critical - and we can meet requirements across the price/performance curve.

DMU30 is our latest high-performance all-MEMS inertial measurement unit, offering ultra-reliable inertial performance equivalent to fibre optic gyro (FOG) -based solutions at lower size, weight and cost.

We also offer DMU11, a low-cost 6-DOF inertial sensor module in use in many applications worldwide, plus CMS300/390 multi-axis inertial modules, single-axis gyro and dual-axis accelerometer chip. All our customers benefit from comprehensive technical support from our expert team.



Silicon Sensing Systems Ltd
Tel: 01752 723330
www.siliconsensing.com



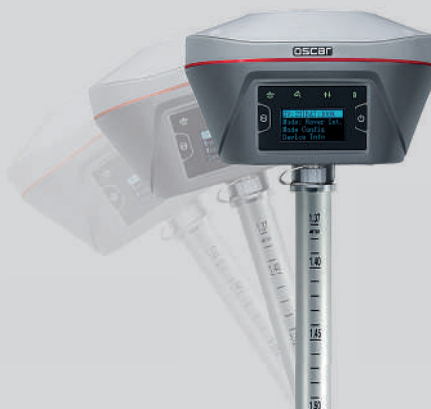
Tersus is a leading GNSS RTK solution provider. Our engineers have been pioneers in the design of GNSS products to support high-precision positioning applications.

Our products include GNSS RTK & PPK OEM boards and receivers, as well as integrated solutions such as the David GNSS Receiver, Oscar GNSS Receiver, MatrixRTK, and GNSS-aided Inertial Navigation System.

Designed for easy and rapid integration, our GNSS solutions offer centimeter-level positioning accuracy and flexible interfaces for a variety of applications including unmanned aerial vehicles (UAVs), surveying, mapping, construction engineering, and precision agriculture.

Tersus values industry solutions, as well as innovations. Accurate, reliable, state-of-the-art hardware is not where we stop. We support you with the most straightforward workflow, from the site to the office. Come to our stand, share your thoughts and your needs with Tersus GNSS RTK Architect and CAD/GIS/BIM Coders.

Visit us at:
InterGEO 2019 Hall 1, Stand B1.006



Tersus GNSS Inc.
sales@tersus-gnss.com
www.tersus-gnss.com



TPC Desktop is the Best Land Surveying Software on the Market

It's real survey software that has everything you need – and nothing you don't. Just enter your data, and drawings generate automatically. Your data is always in front of you and updatable. Plus, our built-in decision-making tools make it simple to reconcile differences with one click.

Works like you think - No need to interact with engineering platforms. It's instinctive and intuitive.

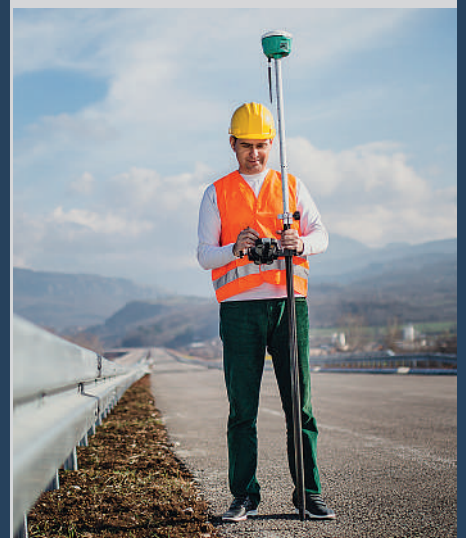
Optimizes your workflows - What you see is what you get. And, you can easily produce quality deliverables.

Makes your drawing quick and easy - Draws your map as you enter data and updates automatically when data changes. Super efficient!

Get the Job Done Right With the Most Effective Tool!

Priced Right!

**By Surveyors
For Surveyors
Since 1987**



Traverse PC
+1 541-997-3518
sales@traverse-pc.com
traverse-pc.com



Developing cutting-edge digital aerial cameras, mobile mapping systems and photogrammetric processing software with innovative approaches beyond well-trodden paths together with constant product upgrades and a world-class support has made Vexcel Imaging one of the market leaders in this area.

The industry-leading UltraCam aerial sensor portfolio covers all applications in airborne photogrammetry: From nadir to oblique to wide-area data collection. On the ground, the portable and vehicle-mounted UltraCams help customers meet even the most demanding mobile mapping challenges. Processing of the UltraCam data is done with the UltraMap photogrammetric software suite offering an end-to-end processing workflow for highly automated generation of exceptional quality point clouds, DSMs, ortho imagery and 3D textured TINs.

In addition, the Vexcel Data Program offers a cloud-based aerial image library empowering organizations with geospatial intelligence. Vexcel already powers the Geospatial Intelligence Center (GIC), the leading industry initiative for insurers and first responders.

Come visit us at:

**Intergeo
Hall 3, B3.020
Stuttgart, Germany
17-19 September 2019**

Vexcel Imaging GmbH
+43 (0) 316 849 066
info@vexcel-imaging.com
www.vexcel-imaging.com



DEEP REALITY VIEWER

GLASSES FREE, 3D DISPLAY

Unique ergonomic digital stereo 3D full high definition viewer

DRV-D1 is a unique, advanced, stereo image presentation system designed to provide fully interactive, real time, natural 3D visualisation with outstanding depth perception

- Digital Stereo 3D with vivid depth perception
- 4 million pixel image
- No glasses or headsets required
- Ergonomic and comfortable
- British optical specialists since 1958

Vision Engineering Group Ltd has been designing and manufacturing high quality ergonomic microscopes, digital instruments, inspection and non-contact measuring systems for over 60 years.



Vision Triteq Ltd
Phone: +44 1483 248300
generalinfo@visiontriteq.com
www.visiontriteq.com



Mobile Mapping in color

Zoller + Fröhlich (Z+F) is one of the world's leaders in 2D and 3D laser measurement technology and continues to develop innovative solutions for the surveying industry.

The new Z+F MapCam® is used in the field of kinematic laser scanning. It collects color information to subsequently colorize the point cloud realistically. It was specially designed and optimized for using together with a Z+F Profiler® 9012.

The two different versions Z+F MapCam® S and Z+F MapCam® C are characterized by high precision in coloration with high efficiency on datasets and computing time. With the new Z+F LaserControl® module "SynCaT", scan- and navigation data can be processed, colorized, visualized and exported for further application.

For more information on events and where else to meet us in 2019, please visit our company website www.zf-laser.com

Visit us at INTERGEO 2019!
Location: Stuttgart, Germany
Date: September 17-19
Booth: G1.014

Zoller + Fröhlich GmbH
Simoniusstr. 22
88239 Wangen
Germany
Phone: +49 7522 9308-0
E-mail: info@zf-laser.com
www.zf-laser.com