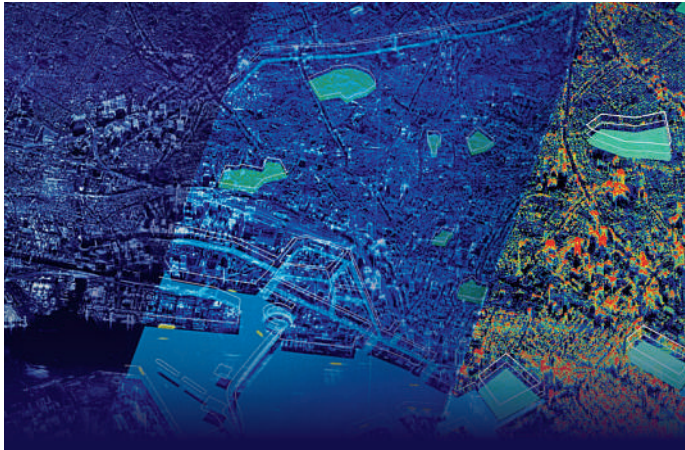


ASIAN SPOTLIGHT

THE LATEST NEWS AND PRODUCTS FROM ASIA



SYNSPECTIVE AND NEOGEOINFO TECHNOLOGIES SIGN PARTNERSHIP AGREEMENT TO APPLY SAR SATELLITE SOLUTIONS IN INDIA

Synspective, a synthetic aperture radar (SAR) satellite data and solutions provider, and NeoGeoInfo Technologies Pvt, a technology oriented geospatial services organization, jointly announced that they are partnering together to utilize **Synspective's analytic solution services** for infrastructure, utilities, disaster management, forestry, and defense/national security in India. Under this partnership agreement, NeoGeoInfo will bring their **15+ years of experience** and engagement in the geospatial domain to supplement Synspective's new technology products and solutions. Together, they aim to create new opportunities and applications for SAR satellites solutions in India. www.synspective.com

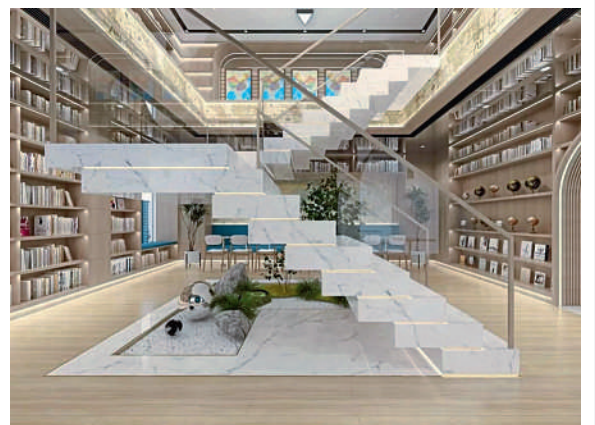


FUGRO AND NATIONAL MARITIME SAFETY AUTHORITY IMPROVE PAPUA NEW GUINEA'S NAVIGATION SAFETY

Working with the National Maritime Safety Authority (NMSA) and with funding from the Asia Development Bank (ADB), Fugro has completed a hydrographic survey to determine a safe channel through the **Star Reef Passage**. That will be used to support updated nautical charting and improved coastal zone management. The project is a key initiative contributing to Papua New Guinea's sustainable economic development. To accomplish the work, the **Fugro LADS HD+ Airborne Lidar Bathymetry (ALB) system** was deployed with a team of surveyors from both the NMSA and Fugro working in collaboration. Fugro's ALB system meets **International Hydrographic Organization (IHO) standards** with the data now set to be used to update nautical charts. The data was collected safely and with minimal environmental impact on the sensitive reef environment or local marine activity. www.fugro.com

NEW VEXCEL PARTNER BEIJING GUOCE OPENS FLAGSHIP STORE IN CHINA

Vexcel Imaging announced a new partnership with 'Beijing GuoCe Space Digital Technology' located in Shi Jing Shan District, Beijing. Beijing GuoCe will become a Sales & Support Partner of Vexcel Imaging and **distribute UltraCams and UltraMap software** directly in China. In addition, Vexcel Imaging's new partner will also operate a service center and open a chain of **physical map stores**, offering geospatial products such as cartographic books, navigation systems, digital maps, etc. Beijing GuoCe's modern flagship store is already open. Vexcel Imaging's new partner is a subsidiary of **Beijing Siwei Spatial Data Technology**. Given the company's core business in remote sensing engineering, geospatial data processing and solutions, and system integration and development, Beijing GuoCe is the ideal partner to promote Vexcel products in the Chinese market. www.vexcel-imaging.com



FUKUI COMPUTER PARTNERS WITH BENTLEY SYSTEMS TO PROMOTE DIGITAL TRANSFORMATION IN JAPAN'S INFRASTRUCTURE FIELD

FUKUI COMPUTER, the CAD vendor for the construction industry, has entered into a strategic partnership with Bentley Systems, the infrastructure engineering software company, to accelerate the adoption of **digital workflows in the Japanese construction industry** and support the

promotion of digital transformation (DX) in the infrastructure field. In Japan, there are concerns about the increasing shortage of labour in the infrastructure field, which is impacting the ability to take measures to mitigate aging infrastructure. This situation is further aggravated by the intensification and

frequent occurrence of natural disasters. To help combat this, FUKUI COMPUTER will leverage the **Bentley iTwin platform** to augment its cloud-based data sharing service **CIMPHONY Plus** with 3D/4D visualization, simulation, and digital twin capabilities. www.bentley.com