

COMPANY SHOWCASE

Our regular 'Company Showcase' feature is the opportunity for suppliers of goods and services from all branches of the geomatics industry to acquaint readers with their latest offerings. Innovation is key to success in today's geomatics market place... one where traditional boundaries are being blurred by the latest trends in convergence and functionality, and it is vital that users can take advantage of these technological advances.

Surveying equipment now incorporates GNSS, GIS, Laser-based and communications, as well as optical capabilities to offer ever higher accuracy and greater local processing power at lower cost. Remote Sensing, in the widest sense, achieves new levels of resolution and precision from Laser, LiDAR, satellite, and aerial sensors, including those carried aboard a new generation of UAVs. The huge volumes of geodata captured by these and other sensors and devices are incorporated in ever more innovative information and location based services that support public and private sector decision makers at all levels, as well as citizens.

Look also for advances linked to the convergence between technologies, from CAD and BIM suites now incorporating GIS and decision support tools to smart phones used to collect and disseminate location-tagged data for commercial and citizen-oriented Open Source applications. For field use, consumers are now spoiled for choice with a wide variety of portable rugged and semi-rugged geodata collection devices based on PDA, tablet and notebook computers. And, of course, the advent of data and software as hosted services via the Cloud presents new challenges and opportunities for users everywhere.

This is an exciting decade for all sectors of the geomatics industry, with innovation powered by creativity, convergence and advances in several allied technologies. Watch this space to keep yourself up to date!

Next Available Showcase:
Spring 2023
(Published April 2023)
Entry Deadline: January 2023

HEXAGON

1



Hexagon is a global leader in digital reality solutions, combining sensor, software and autonomous technologies. We are putting data to work to boost efficiency, productivity, quality and safety across industrial, manufacturing, infrastructure, public sector, and mobility applications.

Our technologies are shaping production and people related ecosystems to become increasingly connected and autonomous – ensuring a scalable, sustainable future.

Hexagon (Nasdaq Stockholm: HEXA B) has approximately 23,000 employees in 50 countries and net sales of approximately 4,3bn EUR. Learn more at hexagon.com and follow us @HexagonAB.

The Smart Digital Reality™

Hexagon's Smart Digital Reality™ is a digital replica of a complete physical world, where all associated things, places and processes within it are machine-readable and subject to the power of algorithms. Every Smart Digital Reality has three defining characteristics:

- **Digitally accessible:** Provides seamless access to physical world information in a digital world
- **Infinitely connected:** Draws and acts on data from multiple sources simultaneously
- **Autonomously intelligent:** Leverages data to make unaided decisions and becomes smarter over time



Hexagon Head Office

Hexagon AB (Publ)
P.O. Box 3692,
SE-103 59 Stockholm, Sweden
Lilla Bantorget 15
SE-111 23 Stockholm, Sweden
Telephone: +46 8 601 26 20
Fax: +46 8 601 26 21
hexagon.com

JUNIPER SYSTEMS

2



Rough Days Need a Rugged Solution

Need a field computer for those rough days? Get one as strong as you are with superior productivity to boot. Our rugged tablet and GNSS receiver handle whatever your day brings.

The Mesa 3 Rugged Tablet keeps you going. It's Juniper Rugged™ with an IP68 rating: dustproof, waterproof, shockproof. Use the battery for 8-10 hours, then hot-swap it with another to keep working, all day and into the night.

Add the new Geode GNS3 GNSS Receiver with its IP68 rating for professional accuracy at a budget-friendly price. With a choice of either a single or multi-frequency antenna, and Atlas L-Band correction service, users have a scalable and simple-to-use precision receiver with accuracy from sub-metre (50cm) to decimetre (10cm).

For complete reliability and low cost of ownership choose Juniper Systems' rugged mapping solutions.

InterGeo 2022: Visit us on Stand F3.072



Juniper Systems Ltd
Birmingham, U.K.
+44 (0) 1527 870773
rugged@junipersys.com
<https://junipersys.com>

KOREC

3



When operating in the natural and built environment, consistent success demands accuracy, safety and speed, whilst reducing costs and environmental impact.

At KOREC, we believe embracing geospatial solutions will transform your outcomes and deliver that success.

KOREC's mission is to empower you to measure, map and manage the natural and built environment.

Combining industry knowledge, with intuitive software, and world-leading positioning technology, KOREC transforms your operations bringing certainty to your decision making.

So, whatever your challenge, application or industry – get in touch with us today, and see how we can help you.

www.korecgroup.com



Scan to visit our website

KOREC Group
UK 0345 603 1214
Ireland 01 456 4702
Email: info@korecgroup.com
www.korecgroup.com

PHASE ONE

4



Aerial imagery solutions for highest accuracy and reliability

Phase One is the global leading provider of high-end imaging technology across many business segments. This includes both hardware and software for aerial mapping, industrial inspection, and cultural heritage digitization, as well as serving the world's most demanding photographers.

Founded in 1993, Phase One provides the world's highest image quality in terms of resolution, dynamic range, color fidelity and geometric accuracy. With a passionate commitment to imaging technology, creative freedom and data to boost productivity, quality, efficiency and safety, we empower our customers with imaging beyond imagination.



Phase One Industrial A/S (HQ)
Roskildevej 39
DK-2000 Frederiksberg
Denmark
Tel: +45 36 46 0111
Fax: +45 36 46 0222
geospatial.phaseone.com

RIEGL

5



RIEGL Expanded their Production Capabilities in Horn

RIEGL stands for innovative, powerful, and reliable **High-Performance LiDAR Sensors and Systems** of latest technology, that are perfectly suited for a wide range of applications in surveying.



Now, the **new production buildings** with 27,000 square feet of additional workspace expand the company's infrastructure in Horn, Austria, by

- a completely new PCB production line including the latest fully automatic pick-and-place machines
- a large-scale production hall for UAV-LiDAR sensors
- another open-plan office for firmware and software development
- a new subterranean long-range calibration and measuring tunnel and associated extended test capabilities

The investments ensure an efficient and up-to-date production and allow to maintain and even improve the quality and the output of RIEGL products.

Explore the latest RIEGL innovation, the **RIEGL VZ-600i Terrestrial Laser Scanner**:



RIEGL
e-mail: office@riegl.co.at
newsroom: newsroom.riegl.international
www.riegl.com

TALLYSMAN

6



TALLYSMAN®
A CALIAN® COMPANY



Discover Tallysman's SSL990XF – the smallest and lightest full-band, precision GNSS antenna on the market.

The SSL990XF provides full GNSS + L-band corrections frequency coverage. The SSL990XF is 63mm in diameter and 28mm tall and weighs ~50 grams making it one of the smallest and lightest housed full-band precision antennas on the market. It has a very tight average phase center variation of 4mm or lower for all frequencies and overall azimuths and elevation angles above 15 degrees.

The radio frequency spectrum has become congested worldwide as many new LTE bands have been activated, and their signals or harmonic frequencies can affect GNSS antennas and receivers. Tallysman's new SSL990XF with eXtended Filtering (XF) technology mitigates the interference effects of these new signals.

It is an ideal antenna for precision UAV and all applications where lightweight and precision matters.

For product inquiries:

Tallysman Wireless Inc.
36 Steacie Drive
Ottawa, Ontario, Canada
K2k 2A9

Tallysman

General Inquiries Tel: +1 613 591 3131
Email: info@tallysman.com
www.tallysman.com

QUARRY ONE ELEVEN

7



QUARRYONEELEVEN



GET NOTICED IN THE CROWD

You are working in an ever more competitive marketplace and to rise above the noise, your key sales and marketing messages must be seen, understood and acted upon.

To achieve these critical business goals, every geospatial company in the world needs to stop talking about what it is they can do and focus on what it is they can do for their prospects and customers.

That's what we do for our clients

Quarry One Eleven

questions@quarry-one-eleven.com
www.quarry-one-eleven.com

COMPANY SHOWCASES 2023

NEXT AVAILABLE EDITION:

SPRING 2023

PUBLISHED APRIL 2023

BOTH ONLINE & PRINT

The Spring 2023 Showcase will highlight many more new products and services available from UK, Europe, the Middle East, Africa, North America and Asia. It will give readers an insight into the companies operating in these vibrant areas, their innovations and technologies.

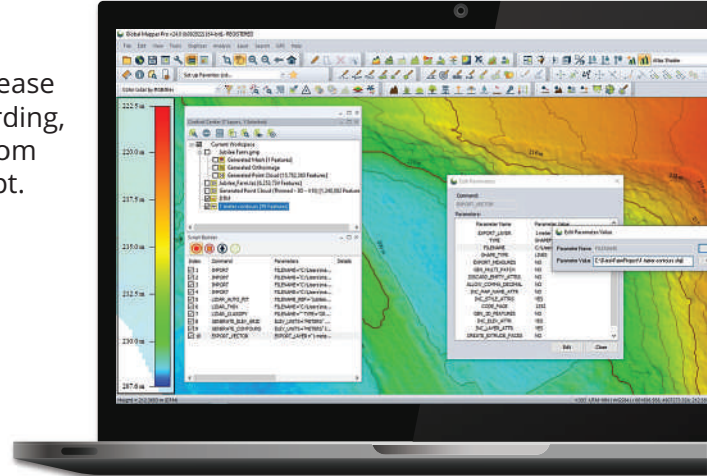
Entry Deadline: January 2023

Top New Features in Global Mapper Pro v24

Established as an advanced and comprehensive geospatial software, Global Mapper Pro excels in terrain analysis, point cloud editing, drone-collected image processing, and more. The latest version of Global Mapper Pro, v24, expands the toolset with new workflow optimization methods and additions to advanced analysis and data creation, including:

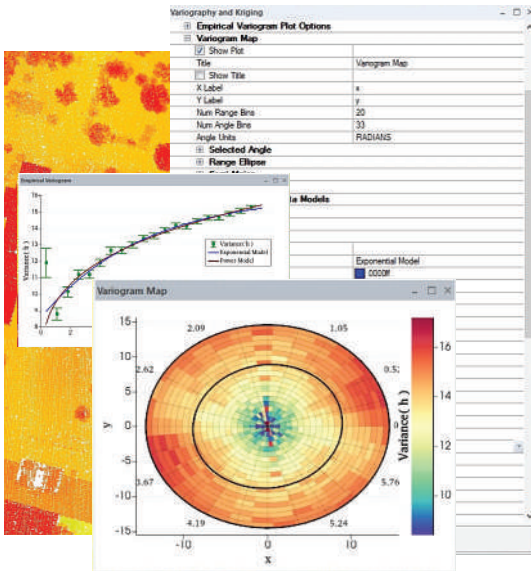
Script Builder

Global Mapper Pro v24 introduces the Script Builder tool to ease the creation of Global Mapper Scripts. When open and recording, the Script Builder transforms movements and tool setups from the Global Mapper Pro user interface to Global Mapper Script. Each recorded command appears as a line in the tool interface, providing the user with options to edit individual parameters or open a sequence of commands in the Script Editor for further editing and saving.



Variography and Kriging

Global Mapper Pro v24 introduces the powerful Variography and Kriging tool to improve data prediction with advanced geostatistical analysis. Beginning with the display of an empirical variogram for the input vector point or lidar data, the tool allows the user to select the input attribute for the analysis and grants full control over the variogram plot through the tool settings. Moving to the kriging process, multiple theoretical models are fitted to the empirical variogram plot, where users can compare the calculated values and formulas to determine the best fitting model to use in generating estimates. With a selected theoretical data model, a kriged prediction layer is created in the workspace containing the estimates alongside an uncertainty measure.



Mobile Data Merging

To supplement Global Mapper for field data reference and collection is Global Mapper Mobile, a mobile app available on Android and iOS. To better integrate the mobile app, Global Mapper Pro v24 expands the Mobile Data Management tool to support data merging that assists users in combining collected data from multiple Global Mapper Mobile Package files. The Package File Import tab of the Mobile Data Management tool first prompts the user for two files, one to pull data from and the other to merge data to. With the files selected, a table view shows users the differences between the designated FROM and TO files tracked by unique GMMID values generated in package files from Global Mapper v24 and the latest version of Global Mapper Mobile. After marking what entries to keep and discard from each input package file, the data is exported to a Global Mapper Mobile Package before being loaded into the open workspace.

Providing users at all skill levels with advanced tools, Global Mapper Pro continues to be an affordable all-in-one GIS software solution. As a program used throughout many industries, the new tools available in version 24 are sure to increase the indispensability of Global Mapper Pro as a tool for teams worldwide.

To check out the exciting new functionality in Global Mapper Pro, download a free 14-day trial today!