

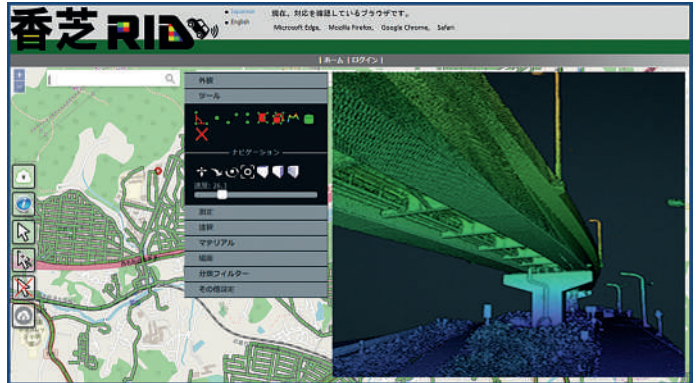
ASIAN SPOTLIGHT

THE LATEST NEWS AND PRODUCTS FROM ASIA

KAZAKHSTAN USES DRONES TO PATROL CAPITAL CITY DURING COVID-19 LOCKDOWN

KazUAV, Kazakhstan's drone service provider and a member of Japan-based **Terra Drone Corporation**, has been working at the frontlines to keep communities safe amid the COVID-19 pandemic outbreak. Providing direct support to the operational headquarters set up to prevent the spread of coronavirus in Kazakhstan, KazUAV has been helping the **Nur-Sultan Police Department** to patrol the borders of the locked-down capital city with drones, ensuring **'contactless' surveillance** and **fast-paced operations**. The

Central Asian nation closed its borders and locked down its main cities, including Nur-Sultan, after confirming the first coronavirus case on March 16. The oil-rich country that borders Russia and China also announced a state of emergency, set to last until April 15, adopting tough measures to combat the pandemic. Some of the guidelines put forth by the Kazakh authorities include country-wide travel restrictions, suspension of public gatherings, and implementation of stringent sanitation and anti-epidemic measures. www.terra-drone.net



THE NEW FREE-ACCESS 3D ROAD DATA WEB PORTAL IN JAPAN BASED ON WEB-SURVEY

Kashiba City has publicly released the 3D data of the city roads and buildings, on its "Kashiba RID" expressly developed **web portal**. This initiative was promoted by the Japanese company **Nippon Insiekt** that surveyed this data with their laser **Mobile Mapping (Siteco's Road-Scanner)** in the years 2013-2019, and adopted Siteco's **Web-Survey software application** for its distribution and deployment. Although such surveyed data is widely used by the local government for public works, it has been released publicly nationwide for the first time, allowing free access and use. The city authorities have high expectations for this online data distribution that can be freely accessed by the Japanese citizens and exploited for many different uses, private use included. The "Kashiba RID" portal gives free access to the data of about **7,000 sections** (each 100-m long) on the road map. Point clouds are also provided for roadside buildings, electrical wire, and road signs and markings. www.sitecoinfo.it



JUNIPER SYSTEMS LIMITED EXPANDS TO INDIA THROUGH PARTNERSHIP WITH ELKAY INDIA

Juniper Systems, a manufacturer of rugged handheld computers, smartphones, and precision GNSS receivers, announced its expansion into India via a new partnership with **Elkay India**. The alliance fills a need in the Indian surveying, industrial, and energy markets for data loggers and receivers

that continue operating in harsh weather conditions. India is a prime marketplace for Juniper's products, which continue operating in **extreme weather conditions**. Outdoor workers, such as surveyors and power plant technicians, often face rapidly-changing and unexpected weather.

Throughout the country, temperatures range from **0°C to 45°C** or more, depending on the season. These fluctuations, along with blowing dust and monsoon rains, can cause handheld field computers to stop working, compromising critical data captured during the day. www.junipersys.com

BENTLEY SYSTEMS, MICROSOFT AND SCHNEIDER ELECTRIC RE-IMAGINE FUTURE WORKPLACES WITH SENSORS, SUSTAINABILITY, IOT AND AI

In collaboration with Bentley Systems and Schneider Electric, Microsoft has rolled out a **digital twin** of its new regional headquarters at **Fraser's Tower** in **Singapore**, offering a living blueprint for the future of smart buildings. The sensors enable monitoring of facilities usage, energy and utilities. They optimize space utilization, air conditioning and lighting adjustments. All these provide a comfortable and productive space for employees, while increasing overall energy efficiency. Open,

interoperable technology also allows activity detection enabled lighting and room sensors to reflect room bookings on the **Microsoft's Smart Building CampusLink** app. The sensors could potentially also monitor carbon dioxide levels in the air that negatively affect work performance and neural activity, noise levels and energy usage, which can result in **savings of up to 25%**, as experienced at Microsoft's Headquarters located in Redmond, Washington. www.bentley.com



ALGIZ RT8

ULTRA-RUGGED EFFICIENCY



ALL-TERRAIN ANDROID TABLET

Work faster, with more focus and fewer interruptions. The Algiz RT8 is a slim ultra-rugged Android tablet built specifically to increase fieldwork efficiency. We'd say this tablet can do everything a consumer tablet can do, but that's not quite true — it can do much more.

Learn more at www.handheldgroup.com/algiz-rt8 or scan the QR code



handheld