

# NEWS & EMERGING TECHNOLOGY

## RIEGL'S MARKET PRESENCE GROWS IN LATIN AMERICA

Expanding their presence in Latin America through this strategic distribution partnership, RIEGL is excited to welcome **Continex** to the growing base of renowned RIEGL partners. Continex, with operations in Panama since 1998, are suppliers of a wide variety of products for surveying, geographic information systems (GIS), UAS, bathymetry, laser levelling, digital photogrammetry, wide format scanners, digital mapping, and maintenance and rental of topographic equipment. They bring over **20+ years of experience** in the survey industry, representing the best in topographic equipment and technology available. Continex works with several top brands for the engineering and surveying market with authorized technical service. [www.riegl.com](http://www.riegl.com)

## FARO ACQUIRES ATS AB

Faro Technologies, a global provider of 3D measurement, imaging and realization solutions for 3D Metrology, AEC (Architecture, Engineering & Construction), and Public Safety Analytics, announced that the Company has acquired **Advanced Technical Solutions** in Scandinavia AB ("ATS"), a Swedish-based provider of 3D digital twin solution technology. Founded in 1990, ATS has had particular success in the **automotive space** where the firm has agreements in place with several well-known global automotive manufacturers. The acquisition will integrate ATS software and proprietary **Traceable 3D system**, which enables highly accurate and repeatable 3D scans, into the **Faro Webshare Cloud** platform. ATS' system connects the physical to the digital world and is expected to bolster Faro's ability to improve customers' time to decision with 10x faster 3D imaging at up to 1mm accuracy. [www.faro.com](http://www.faro.com)

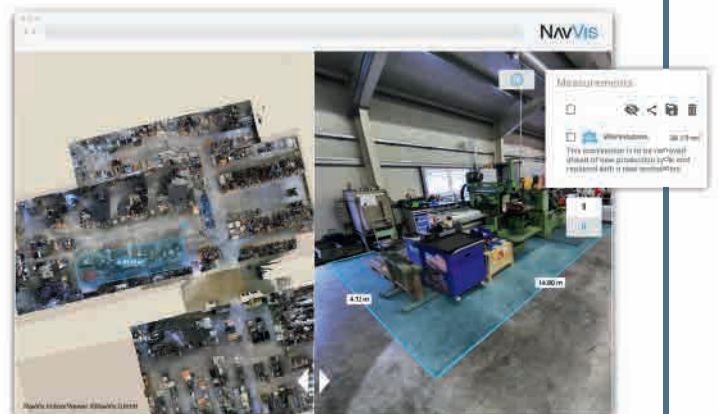
## EOS POSITIONING SYSTEMS ANNOUNCES COMPATIBILITY OF EOS LASER MAPPING AND EOS LOCATE WITH ESRI ARCGIS FIELD MAPS (BETA)

Eos Positioning Systems (Eos), the Canadian manufacturer of the popular high-accuracy Arrow Series GNSS receivers, has announced the compatibility of two popular **Eos field data-collection solutions** with the Esri ArcGIS Field Maps beta. Eos Locate for ArcGIS is the world's first real-time, survey-grade solution for **mapping underground utilities** with ArcGIS field apps. Eos Laser Mapping for ArcGIS is the world's first laser-offset solution for **mapping assets from afar** with high accuracy, without having to physically occupy them. Customers transitioning to Field Maps from Collector will be able to take advantage of additional capabilities (e.g., smart forms, markups) without having to deploy new training or workflows, according to Esri Program Manager Doug Morgenthaler. [www.eos-gnss.com](http://www.eos-gnss.com)



## NAVVIS RELEASES INDOORVIEWER 2.7

NavVis, the global provider of indoor spatial intelligence technology and enterprise solutions, announced the release of NavVis IndoorViewer 2.7. With this major software release users can look forward to a number of **additional features** to the measurement tool including the ability to **annotate measurements** as well as being able to export and share them as **PDF documents**. NavVis IndoorViewer is an innovative web-based deliverable that, in just a few clicks, turns laser scan data into **basic building models** displayed as 360° realistic digital buildings, point clouds and customizable floorplans. The next generation software, which is also available as a cloud-based SaaS solution – **NavVis Cloud** – can be set up on-demand without the need for added IT infrastructure and maintenance. [www.navvis.com](http://www.navvis.com)



## PARROT, ACTIVE PARTICIPANT IN FRENCH DRONE REGULATION

Parrot, a European drone group, has worked closely with French authorities and regulators to address the rapidly progressing regulations in France. With the growth of the drone industry, and the access for all to smaller and more efficient drones, **safety** and **security** continue to be a major concern for all stakeholders in the industry. Both the design and the use of drones are governed by new regulations. In order to implement these **new standards**, Parrot is actively working with **French authorities** and **regulators** to ensure a consistent transition for everyone, including users. Parrot guarantees all its users the highest level of privacy and security protection by being in full compliance with the European General Data Protection Regulation (GDPR).

[www.parrot.com](http://www.parrot.com)



## GARMIN AUTOLAND ACHIEVES EASA AND FAA CERTIFICATION ON DAHER TBM 940

Garmin International announced European Aviation Safety Agency (EASA) and Federal Aviation Administration (FAA) certification of Autoland in the **Daher TBM 940**. The Garmin Autoland system is available as part of the **G3000 integrated flight deck** and is capable of taking control and landing the aircraft without human intervention in the event the pilot is unable to fly. In the event of an emergency, the pilot or passengers on board the aircraft can activate Autoland to land the aircraft with a simple press of a dedicated button. Autoland can also activate automatically if the system determines it's necessary. Once activated, the system **calculates a flight plan** to the most suitable airport, while avoiding terrain and adverse weather, initiates an approach to the runway and automatically lands the aircraft – without pilot or passenger intervention.

[www.garmin.com](http://www.garmin.com)

## YOUR EQUIPMENT.

Integrate a LTI laser with your current GIS systems

## YOUR SOLUTION.

Software solutions to collect more data than ever before

## YOUR GIS.

Construct your ideal method for capturing data from a single location

## Experience the Difference.

**Go2.LaserTech.com/Ready** to see all compatible device and software solutions for TruPulse® laser mapping

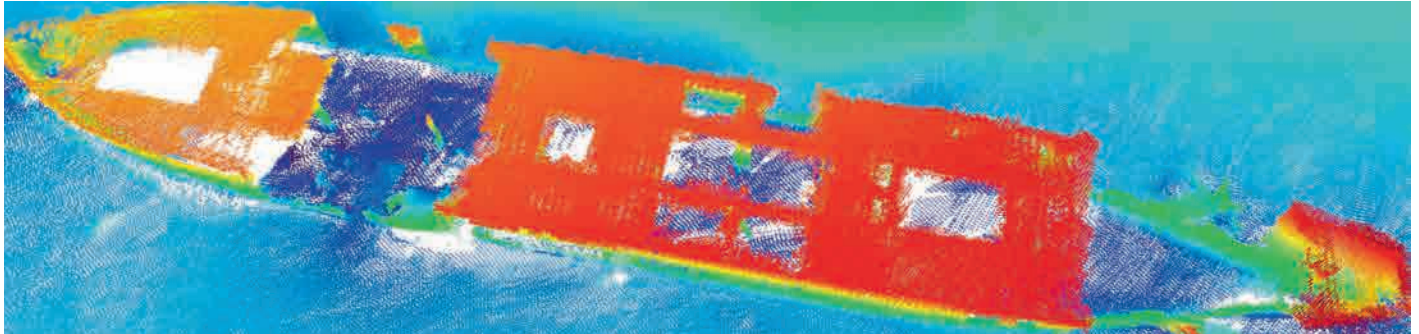


## ARE YOU LASER READY?



**LASER TECH**





## TDI-BROOKS MAPS THE LIBERTY SHIP REEF SITE GEORGE VANCOUVER

TDI-Brooks recently mapped the Liberty Ship George Vancouver off Freeport, Texas while out on a seabed survey project with the R/V Brooks McCall. The multiple multi-phase geophysical and geotechnical site surveys program consisted of **pipeline routing** and **subsea structures** to facilitate route and project design for

offshore developers.

Equipment used to map the ship was a **Teledyne Reson SeaBat T-20** multibeam sonar with integrated **Applanix POSMV for Motion**. Applying the mesh tools to the multibeam survey shows an example of the shipwreck. [www.tdi-bi.com](http://www.tdi-bi.com)

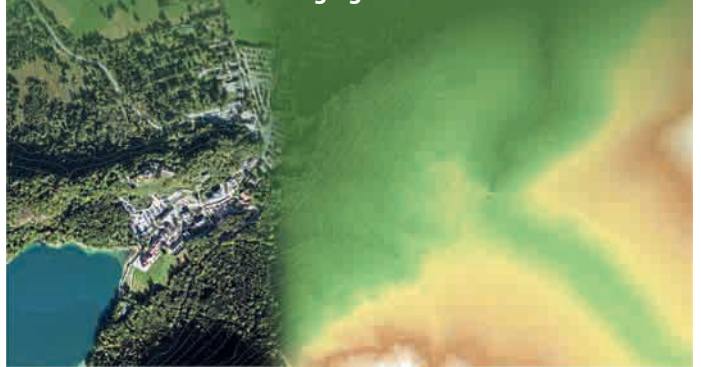
## OGC WELCOMES MICROSOFT TO THE OGC COMMUNITY AS A PRINCIPAL MEMBER

As a Principal Member of OGC, Microsoft will participate across OGC activities and serve in OGC's Planning Committee to explore market and technology trends relevant to OGC's global mission to make location information more **Findable, Accessible, Interoperable, and Reusable** (FAIR). OGC Principal Members ensure that OGC's policies and procedures remain effective and agile in a changing technological environment, and participate in **final approval decisions** for all OGC standards as well as nominations to the **Board of Directors**. As an OGC Principal Member, Microsoft will work alongside other world-leading organizations looking to advance the location information industry, including Airbus Defence & Space, the Indian Department of Science and Technology, Esri, Feng Chia University, Google, Hexagon, Leidos, Maxar, Oracle, Trimble Navigation, and the US National Oceanic and Atmospheric Administration (NOAA). [www.ogc.org](http://www.ogc.org)



## VEXCEL RELEASES ULTRAMAP VERSION 5.0

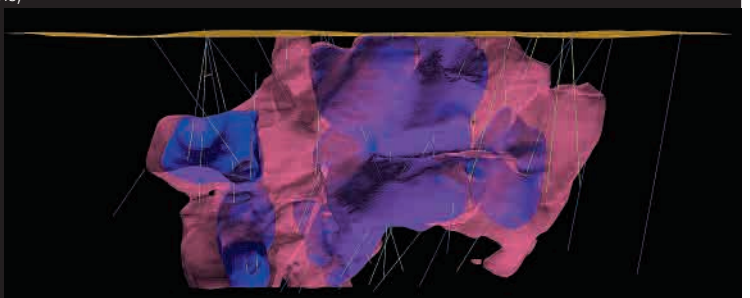
Vexcel Imaging announces the release of UltraMap version 5.0, the latest update of its all-in-one aerial photogrammetry software featuring comprehensive **DTM generation** and full integration of **Ortho Production** in **UltraMap Studio**. With the introduction of a completely new **Digital Terrain Model (DTM) algorithm** based on automatic semantic image segmentation and intelligent filtering, UltraMap 5.0 now generates comprehensive DSMs and DTMs for export at unprecedented quality. Additionally, several new features have been implemented to facilitate and speed up the data production process. From simultaneous DSM and DTM editing in one interface and simple re-processing for ortho products, to the full integration of Ortho Production in UltraMap Studio and **new quality control tools** like visualization of non-ground objects: Customers gain the best possible insight and control over their data throughout the entire value chain to create 3D spatial data products that meet the highest photogrammetric standards. [www.vexcel-imaging.com](http://www.vexcel-imaging.com)



## ENHANCED GEOLOGY AND MINE DESIGN IN VULCAN 2020

Desktop tools that enable mining professionals to interact with their data are the building blocks upon which Maptek innovation was founded. Almost 40 years on from the early borehole modelling tools, Maptek has this week released Vulcan 2020, featuring integrated geology and optimised mine design. Today Vulcan is populated with functionality that provides holistic benefits to modern mining operations. These translate into **increased productivity** for specific applications - such as geological modelling, automated mine design and grade control - as well as improvement to the mining business in terms of cost efficiencies, where examples include **drillhole optimisation** and **dynamic reserving**. New in Vulcan 2020, Vulcan Drillhole Optimiser helps exploration projects,

open pit and underground operations to confidently develop infill drilling plans that maximise resource recovery. [www.maptek.com](http://www.maptek.com)







# Need performance in a tight space?

Ultra-compact, MEMS-based motion sensors and systems - precision performance for the smallest platform.



Motion Sensing **Solved**

[www.siliconsensing.com/space](http://www.siliconsensing.com/space) #motionevolution

**SILICON**   
**SENSING**®  
SUPERIOR SENSORS



### SPAIN'S ANDALUSIAN FIRE AUTHORITY FAST-TRACKS DEPLOYMENT OF GLOBALSTAR SPOT GEN3 SATELLITE MESSENGERS

Globalstar Europe Satellite Services Ltd, a wholly owned subsidiary of Globalstar, and a provider of satellite messaging and emergency notification technologies, announces that **550 SPOT Gen3™** satellite-enabled safety devices have been deployed to **safeguard and track firefighters** across the vast expanse of Andalusia in southern Spain. For this rapidly-delivered project, SPOT Gen3 satellite messengers are the backbone of an advanced fire management technology platform from wildfire solutions specialist **Technosylva** to monitor and protect the region's fire response teams and vehicles. This was a particularly urgent requirement by **INFOCA**, the administrative authority for forest and wildfire management, a department of the **Junta de Andalucía**, the local government for this region. INFOCA needed a fast deployment of a far-reaching, reliable tracking system to monitor and protect firefighters as Spain deals with the many complications and risks created by the global Covid-19 pandemic. [www.globalstar.com](http://www.globalstar.com)



### BAE SYSTEMS COMPLETES ACQUISITION OF MILITARY GPS BUSINESS

BAE Systems has completed its acquisition of the **Collins Aerospace Military Global Positioning System (GPS)** business from Raytheon Technologies Corporation, bringing decades of experience, innovative technology, and an extensive installed base of products to the company. As announced in January, this asset purchase is a unique opportunity to acquire a high-quality, technology-based business that augments the existing BAE Systems Electronic Systems portfolio through the addition of **world-class GPS anti-jamming and anti-spoofing technology** that enables reliable navigation and guidance for a range of defence missions. Based in Cedar Rapids and Coralville, Iowa, with a workforce of approximately 700 employees, the Military GPS business has been a pioneer in its field for more than 40 years and has a global installed base in excess of 1.5 million devices on more than 280 airborne, ground, and weapon system platforms. [www.baesystems.com](http://www.baesystems.com)



### ATLAS AND BLACKSKY HARNESS EXPANDED EARTH OBSERVATION CAPABILITIES

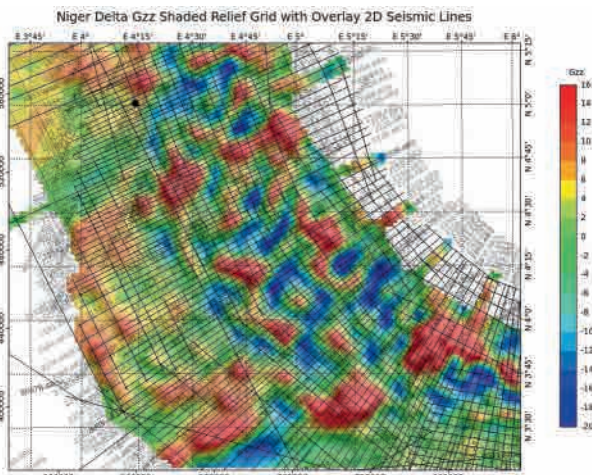
ATLAS Space Operations, an innovator in ground communications for the space industry, announced that BlackSky has selected ATLAS to provide telemetry, commanding, and data support for its fifth and sixth satellites in its high-revisit **Earth imaging satellite constellation**. ATLAS is providing support through their ground station sites in **Guam and Japan**, utilizing their innovative Freedom software. BlackSky helps organizations observe and understand global events by integrating a diverse set of sensors and data, including satellite images, to provide sensitive monitoring and alert services. On August 7th, the company launched **two additional satellites** (of a planned 60) into low earth orbit. The newest satellites provide 1-meter resolution colour imagery and increases global revisit rates — already amongst the best in the world. These advancements will further enhance Blacksky's access to reliable, secure, and fast space-based data, allowing them to provide improved intelligence and analysis capabilities to their customers. [www.blacksky.com](http://www.blacksky.com)

### ESRI AND UNITED NATIONS CREATE COVID-19 POPULATION VULNERABILITY DASHBOARD

Esri, a global provider of location intelligence, announced it has collaborated with the United Nations Population Fund (UNFPA) to create the UNFPA COVID-19 Population Vulnerability Dashboard. This new **interactive tool** will provide public health workers, policy makers, and the general public with access to useful information on populations vulnerable to coronavirus disease 2019 (COVID-19) in order to target preparedness and response and to help save lives. The dashboard highlights population vulnerabilities at the national and subnational levels, using data from the latest **Integrated Public Use Microdata Series (IPUMS)** census samples for 94 countries. It identifies populations at older ages, including those living alone, and includes risk factors for COVID-19 transmission such as residential density (household size and persons per room) and access to piped water and other amenities. [www.esri.com](http://www.esri.com)

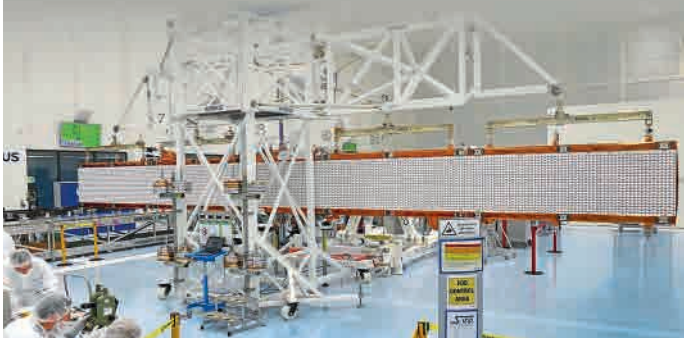
## CGG MULTI-PHYSICS UPDATES LCT SOFTWARE WITH INNOVATIONS FOR IMAGING POTENTIAL FIELD DATA

CGG Multi-Physics has released an important update to its LCT potential field software suite. Oil and gas exploration geoscientists use LCT to model, process and interpret their gravity and magnetic data for guiding **integrated subsurface imaging**. The improved capabilities available in the new LCT R2017.06 release are based on existing user feedback. In particular, enhancements to the software's intuitive and powerful workflows improve ease-of-use, bring overall risk reduction benefits and increase productivity to levels unavailable in previous versions. Critical techniques required for comprehensive **geological forward modelling, inversion, and management of potential field data** have also been extended and enhanced to rapidly deliver an accurate model of the subsurface. For example, the new LightTable module supports and integrates LCT's existing 3MOD and 2MOD modules for producing realistic geological models. [www.cgg.com](http://www.cgg.com)



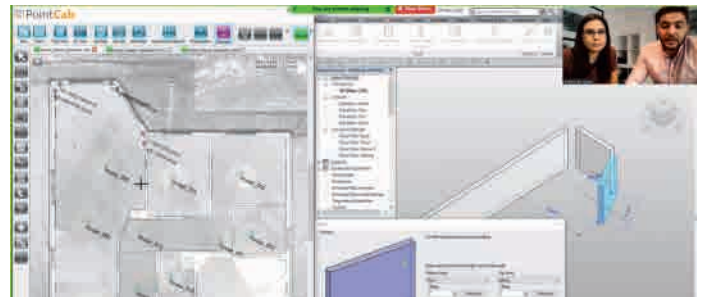
## SENTINEL-1C RADAR ANTENNA HAS SPREAD ITS WINGS FOR THE FIRST TIME

Fixed to a special device, simulating zero gravity conditions, the 12.3 metre wide and 860 kg SAR (Synthetic Aperture Radar) radar antenna of the Copernicus Sentinel-1C satellite has successfully spread its wings at the **Airbus Integrated Technology Centre in Friedrichshafen** (Germany) for the first time. Sentinel-1C is the third of the Sentinel-1 radar satellite series and will ensure data continuity for the many services offered by the EU's **Copernicus programme**. The Sentinel-1C satellite equipped with the **SAR Instrument** (C-band radar) will provide radar images of the entire Earth's surface as part of the Copernicus programme funded by the European Union and the European Space Agency (ESA). Thales Alenia Space is prime contractor for Sentinel-1C and its twin Sentinel-1 D. Airbus Defence and Space is responsible for both radars. [www.airbus.com](http://www.airbus.com)



## TELESPAZIO WILL PROVIDE SATELLITE CONNECTIVITY FOR THE IRISH MARINE BUOY OBSERVATION NETWORK

Telespazio has been awarded a contract to maintain satellite connectivity to the Irish Marine Data Buoy Observation Network. The Irish Marine Data Buoy Observation Network has been managed for over 20 years by the Marine Institute in collaboration with Met Éireann and is designed to **improve weather forecasts and safety at sea** around Ireland. The Irish Marine Buoy Observation Network comprises five deep field offshore buoys that gather **real-time weather and oceanographic data** from around the Irish coast. The network provides crucial data for weather forecasting, risk management for shipping, advance warnings for the fishing community and coastal towns and villages, as well as oceanography research and data on Ireland's deep waters. Thanks to the new contract, each buoy will continue to use the **Iridium Short Burst Data (SBD)**, an efficient network transport with capability for transmitting real-time short data messages via satellite. [www.telespazio.com](http://www.telespazio.com)



## SEILER DESIGN SOLUTIONS ANNOUNCES PARTNERSHIP WITH POINTCAB

Seiler Design Solutions, a provider of scan-to-BIM products and services, announced a partnership with PointCab out of Stuttgart, Germany. The new agreement adds the **PointCab point cloud processing software** to Seiler's robust offering of solutions for the **Geospatial** and **AEC** (Architecture Engineering Construction) industries. "The Seiler product catalogue is designed to provide the full **scan-to-BIM workflow**. We distribute laser scanners and are also an Autodesk Gold Partner. By adding PointCab to our portfolio we're offering a fast and incredibly easy-to-use workflow that links the point cloud to BIM and is tailored to our customer's needs," says Lanny Schnipper, Vice President of Seiler Instrument & Manufacturing Company. In addition to welcoming PointCab to its catalog, Seiler will also become the Master Reseller and go-to-address for PointCab in the U.S. [www.seiler-ds.com](http://www.seiler-ds.com)

## DRONE AND FAST MAPPING FOR PUBLIC SAFETY

Autel Robotics and Pix4D are announcing a new partnership specially tailored to meet the needs of the public safety sector: Autel Evo II Rugged Bundles will now include **Pix4Dreact**, Pix4D's 2D fast-mapping software at no extra charge. Now compatible with all Autel Evo II camera models for real colour mapping, Pix4Dreact is specifically designed to provide quick and reliable **situational awareness** to first-responders while in the field. Fast, lightweight, easy-to-use and robust, it can produce high-quality **2-dimensional orthomosaic maps** when time is of the essence. It is the perfect software companion to the **Autel Evo II**, enabling teams on the ground to respond quickly and safely. These new bundles include the Autel Evo II drone (available with 8k, 6k, or Dual camera options), a hard carrying case, one additional flight battery and a yearly license of Pix4Dreact. [www.pix4d.com](http://www.pix4d.com)





## GPS III SPACE VEHICLE 04 SAFELY ARRIVES IN FLORIDA

The U.S. Space Force Space and Missile Systems Center successfully delivered the fourth **Global Positioning System (GPS) III satellite** to Cape Canaveral Air Force Station, Florida, July 14. GPS III Space Vehicle (SV) 04 was safely transported from the Lockheed Martin facility in Waterton, Colorado to Space Coast Regional Airport in Titusville, Florida. The satellite was carried aboard a **C-17 Globemaster III** originating from Joint Base Lewis-McChord, Washington. The delivery of GPS III SV04 starts the clock for final testing and checkout prior to launch. The satellite will be processed at the **Astrotech Space Operations** facility in Florida to ensure the full functionality of the satellite, prepare the satellite for propellant loading, and encapsulate the satellite in its protective fairing. At the completion of these activities, the satellite will be horizontally integrated with the SpaceX Falcon 9 launch vehicle. [www.lockheedmartin.com](http://www.lockheedmartin.com)

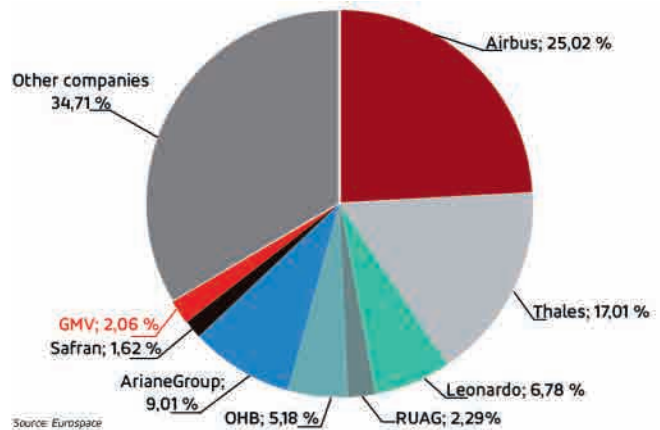
## PHASE ONE INDUSTRIAL AND ACECORE ANNOUNCE INTEGRATION OF CAMERA AND DRONE TECHNOLOGIES

Phase One Industrial, a provider of medium- and large-format metric cameras and imaging solutions for aerial applications, has signed an agreement with **Acecore Technologies**, a developer and manufacturer of **Unmanned Aerial Vehicles (UAVs)** for cinema and creative, industrial, and security markets. Together, these companies' high-end products are opening new opportunities in drone-based high-accuracy **mapping** and **inspection** markets. Phase One Industrial developed the **iXM series** – revolutionary and uniquely designed cameras for UAV-based aerial imagery that redefine the boundaries of technological innovation. The **iXM 100MP** and **iXM 50MP** are high-productivity metric cameras with a range of specially designed RSM lenses. The iXM cameras are ready for easy integration with a wide range of UAV platforms, delivering superior quality aerial imaging and flexible operation to satisfy diverse mapping, surveying, and inspection applications. [www.acecoretechnologies.com](http://www.acecoretechnologies.com)



## GMV IS EUROPE'S 7TH BIGGEST EMPLOYER IN THE SPACE SECTOR

Eurospace's 24th facts & figures annual report on Europe's space industry highlights the role played by the technology multinational GMV over recent years, accounting for 2.06% of full time employment in 2019 out of total of 47,895 workers (+5.7%). From the employment point of view, therefore, **GMV is disputing with RUAG the sixth ranking in Europe's space sector**, behind the big firms like Airbus, Thales, Ariane, Leonardo and OHB. Eurospace's yearly survey is backed by all major space firms and gives a faithful snapshot of the sector. [www.gmv.com](http://www.gmv.com)



## HAWKEYE 360 LAUNCHES GLOBAL RADIO SIGNAL MONITORING SUBSCRIPTION

HawkEye 360, the first commercial company to use satellites to create a new class of radio frequency (RF) data and data analytics, announced that it is offering a daily **Regional Awareness Subscription (RAS)** service. Leveraging the company's **RFGeo product**, RAS delivers **mission-critical insights** by allowing organizations to identify, monitor, and analyze signal behavior over time. Large-scale **RF signal mapping** provides deeper situational awareness in these regions, with the data sets enabling trend analysis using traditional and **artificial intelligence algorithms**. HawkEye 360 will work with customers to define a **Regional Awareness Subscription** that can span millions of square kilometers. Current RAS collection areas include the Mediterranean, South China Sea, and the Korean Peninsula. HawkEye 360 curates a collection plan that routinely gathers a combination of high-demand signals. The company delivers the data in an open standard **GeoJSON format** that seamlessly integrates with most applications. [www.he360.com](http://www.he360.com)



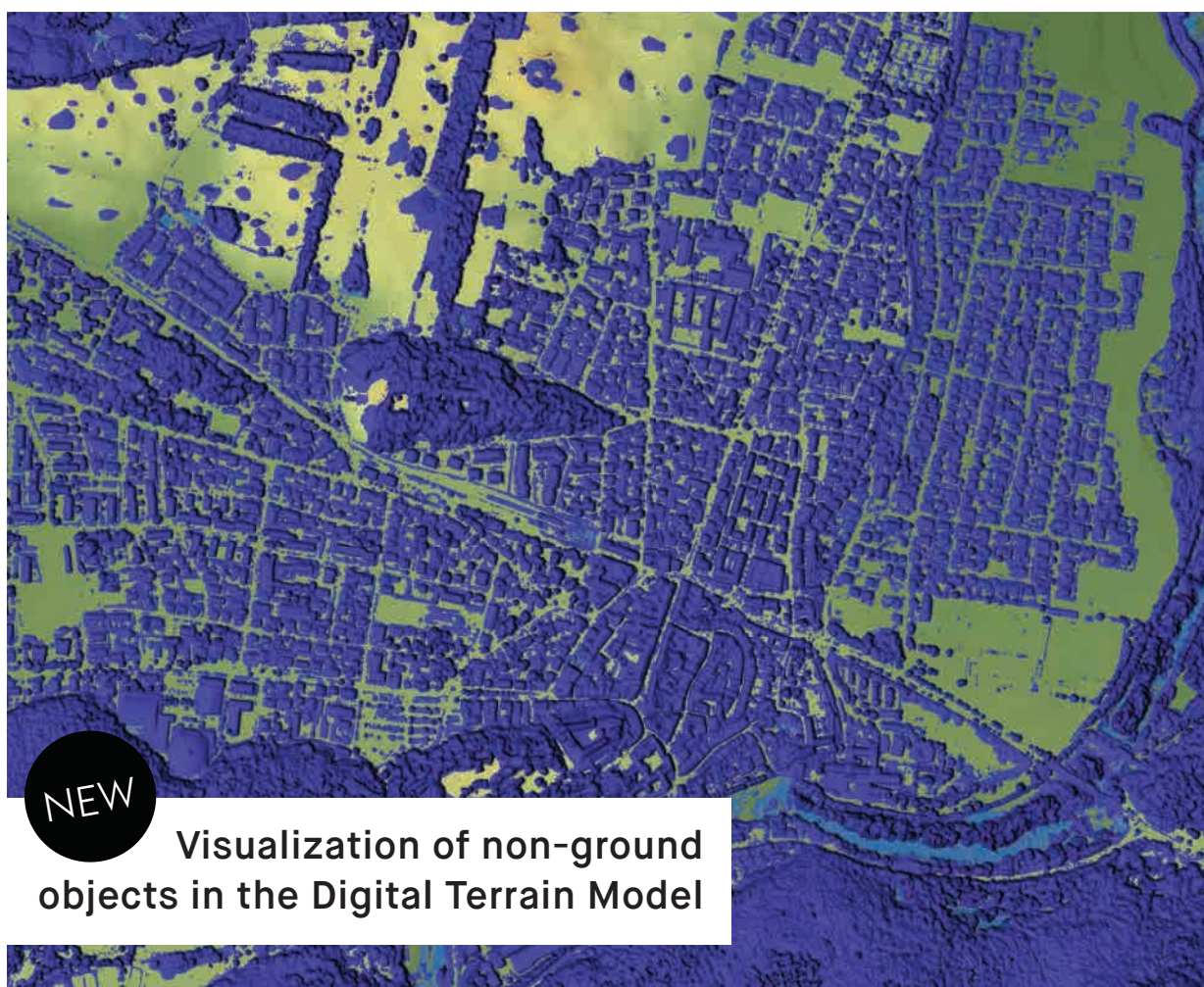
VEXCEL  
IMAGING

# UltraMap

## Elevate your performance.

---

UltraMap is the all-in-one aerial photogrammetry software providing highly-automated processing capabilities to rapidly generate point clouds, DSMs, DTMs, ortho imagery and 3D textured TINs from UltraCam aerial imagery.



Discover more on  
[www.vexcel-imaging.com](http://www.vexcel-imaging.com)