

# NEWS & EMERGING TECHNOLOGY

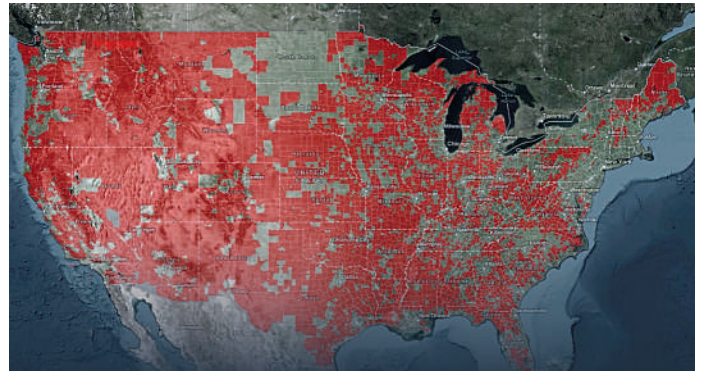
## IGPSPORT'S LATEST CYCLING COMPUTER USES U-BLOX M10 TO DELIVER ULTRA-LONG PERFORMANCE

u-blox, a global provider of positioning and wireless communication technologies and services, and iGPSPORT, a sports hardware and data service provider operating out of Wuhan, China, have announced the **iGS320 cycling computer**, which builds on the **u-blox M10 positioning platform**. The cycling computer leverages the u-blox M10 platform's ultra-low power consumption, compact size, and its ability to track **four global navigation satellite systems** (GNSS) to offer endurance athletes a superior user experience. Adopting the u-blox M10 positioning platform in their iGS320 cycling computer brought iGPSPORT an 80 percent increase the power autonomy to deliver **72 hours of continuous tracking**, up from 40 hours in their previous solution. Concurrent reception of up to four GNSS constellations increases coverage and accuracy in otherwise challenging signal environments. [www.u-blox.com](http://www.u-blox.com)



## SIMACTIVE SOFTWARE USED WITH BOTH LIDAR AND IMAGERY TO MAP VENICE BEACH

SimActive announces the use of its Correlator3D product by GEO1 to produce colored point cloud data of Venice Beach, CA. The project took place during the COVID-19 pandemic in the hope of capturing a pedestrian free dataset along the strand, which is typically populated with tourists and locals alike. Flying in a **Bell 206 helicopter**, GEO1 captured high resolution data of the beach using the **Phase One iXM-RS150F** camera along with a **Riegl VQ480II** LiDAR sensor. The team was able to efficiently acquire data despite logistical challenges of the project area, which is adjacent to Los Angeles International Airport. GEO1 partnered with **Compass Data** who provided survey support and control for the project. CompassData went over and above during the height of the pandemic to deliver critical Ground Control points. [www.simactive.com](http://www.simactive.com)



## NTIA CREATES FIRST INTERACTIVE MAP TO HELP PUBLIC SEE THE DIGITAL DIVIDE ACROSS THE COUNTRY

The U.S. Department of Commerce's National Telecommunications and Information Administration (NTIA) released a new **publicly available digital map** that displays key indicators of broadband needs across the country. This is the first interactive, public map that allows users to explore different datasets about where people do not have quality Internet access. The public **"Indicators of Broadband Need"** tool puts on one map, for the first time, data from both public and private sources. It contains data aggregated at the county, census tract, and census block level from the U.S. Census Bureau, the Federal Communications Commission (FCC), M-Lab, Ookla and Microsoft. [www.ntia.gov](http://www.ntia.gov)



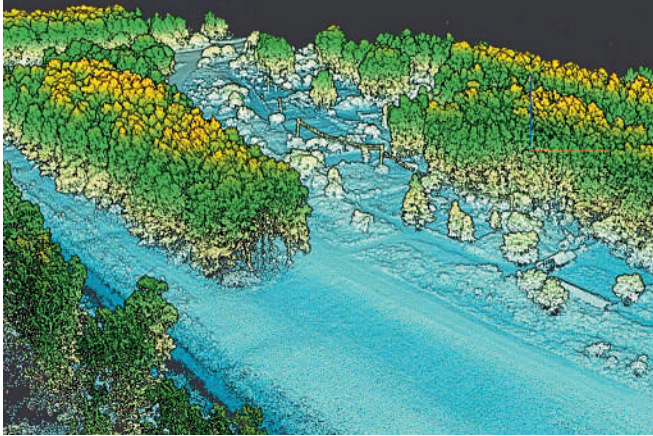
## SILICON SENSING SHOWCASES NEW, SPACE-FOCUSED INERTIAL MEASUREMENT PRODUCTS AT SPACE-COM

Silicon Sensing Systems exhibited inertial measurement technology, developed specifically for the space market, at the first Space-Comm Expo in Farnborough, UK. The suite of products comprises four new, high performance units: **CRH03** – a miniature, standalone single axis gyro; **RPU30** – a compact and rugged, 3 axis gyroscope for applications where linear acceleration measurement is not needed; **IMU20** – a highly ruggedised 6 degree of freedom (DoF) inertial measurement unit (IMU) suited to the highest impact and vibration environments; and **DMU41** – a compact, 9 DoF IMU and the highest performing silicon MEMS (micro electro-mechanical systems) IMU available on the market today. [www.siliconsensing.com](http://www.siliconsensing.com)

## SPH ENGINEERING ANNOUNCES THE UPDATE OF UGCS FOR UAV-BASED LIDAR MAPPING

SPH Engineering announces the release of UgCS update, introducing LIDAR toolset to unlock the full potential of LIDARs making remote sensing most effective with no human errors. Key features include precise calibration, flight patterns for route planning, anti-shake turns, and constant line spacing and buffer. UgCS LIDAR toolset allows to optimize time and cost-effectiveness at all stages of **data collection** and **processing**. At the flight planning stage time could be saved on mission planning with flight patterns and turns designed specifically for **LIDAR surveys**. At the flight stage one may acquire high-quality laser data with **preset IMU initialization patterns** and **anti-shake LIDAR turns**.

During post-flight data analysis, the high accuracy of acquired data ensures getting desired results with one trip to the field and better data analysis. [www.ugcs.com](http://www.ugcs.com)



## ESRI ARCGIS PRO CERTIFIED FOR 3D STEREO VISUALIZATION WITH 3D PLURAVIEW MONITORS

ArcGIS Pro from Esri meets all requirements for the efficient display and processing of GIS, BIM, LiDAR and photogrammetric geodata in a fully integrated **3D-stereo work environment** with an outstanding range of functions. The compatibility of **ArcGIS Pro** with the entire **3D PluraView** monitor product family has now been officially certified by the manufacturer Schneider Digital. The prerequisite for the stereoscopic display of **3D geodata** is a monitor system with high-resolution, bright and contrast-rich 3D stereo visualization, to best support ArcGIS Pro users. This perfect visualization solution is provided by the 3D PluraView family of monitors by Schneider Digital, which are latency-free and work 'plug-and-play' with professional NVIDIA and AMD graphics cards. [www.pluraview.com](http://www.pluraview.com)



## BOSTON UNIVERSITY USES BLUESKY AERIAL PHOTOMAPS TO RESEARCH CLIMATE CHANGE

Researchers at Boston University are using high resolution aerial photography to investigate how important **coastal ecosystems** are responding to **climate change**. The study focused on an area of salt marsh in Massachusetts which saw an extreme storm event deposit more than **15 years' worth of sediment** onto the marshes. Using **high resolution aerial photography** from Bluesky researchers were able to examine the deposits in detail recording measurements of deposit's distribution and total cover. A second survey of the site has recently been completed by Bluesky to map depressions in the marsh surface, called potholes, which are important indicators of how the salt marsh is responding to rising sea level. [www.bluesky-world.com](http://www.bluesky-world.com)



## HERE ANNOUNCES MOBILE LIDAR DATA AND MORE ACCESSIBLE WITHIN BENTLEY'S ORBIT

HERE Technologies announced the availability of a solution that makes it easier for U.S. departments of transportation (DOTs) to conduct fixed asset management activities, plan capital investments, and deliver infrastructure performance assessments according to federal regulations. HERE data sources, including HERE map, light detection and ranging (LiDAR) data, and street level imagery, are now accessible within **Bentley Systems' Orbit**, an on-premises application or cloud service for managing, analyzing and sharing reality meshes, extremely large point clouds, imagery, and traditional GIS data. Now, state and city DOTs can quickly **build digital twins**, which are **highly accurate 3D representations of their physical realities**, without the time and cost required to acquire the LiDAR and street-level imagery themselves. [www.here.com](http://www.here.com)



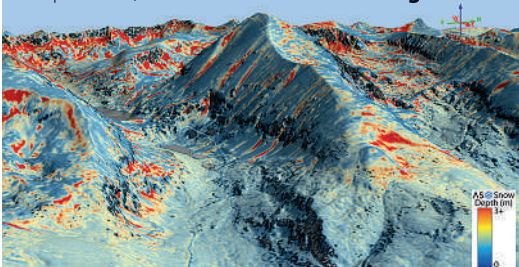
## GLOBALSTAR SPOT GEN4 TO PROVIDE TRACKING AND SAFETY FOR THOUSANDS OF ADVENTURE TRAVELLERS

Globalstar Europe Satellite Services, a wholly owned subsidiary of Globalstar, announces that IoT track and trace specialist GeoDynamics is deploying **SPOT Gen4 satellite GPS messengers** to support its customers in the adventure travel business sector. The company has procured 600 rugged, reliable, and economical SPOT Gen4 devices, the newest member of the award-winning SPOT family, credited with over **7,500 rescues** worldwide to date. GeoDynamics' first deployment in this field is for Travelbase, a Belgian travel company which organises trips for over **50,000 people** each year, including adventure holidays to any of 25 European destinations. [www.globalstar.com](http://www.globalstar.com)



## AIRBORNE SNOW OBSERVATORIES TAKES DELIVERY OF THE RIEGL VQ-1560 II-S LIDAR SYSTEM

Airborne Snow Observatories has taken delivery of one of the first in North America cutting-edge **RIEGL VQ-1560 II-S** airborne laser scanners, just as the ASO program at NASA pioneered the use of the first of RIEGL's dual laser scanner, the **LMS-Q1560** in 2013. This new LiDAR system, with its **doubled laser power** and **high pulse frequency**, will allow ASO to achieve its needs far more efficiently to uniquely measure snow water equivalent across extensive mountain basins. ASO is a public benefit corporation that was created via technology transfer from the **NASA Jet Propulsion Laboratory** to continue and expand ASO operational snow mapping and runoff forecasting to the world's mountains. Through coupling of RIEGL LIDAR, imaging spectrometer data, and physical modeling, ASO Inc. maps mountain snow depth, snow water equivalent, and snow albedo. [www.riegl.com](http://www.riegl.com)



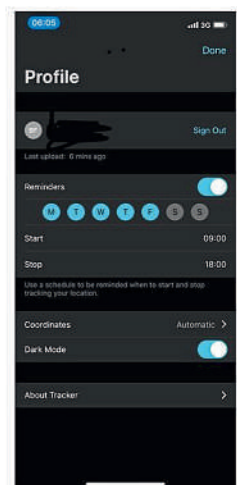
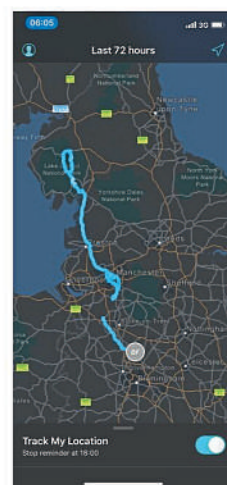
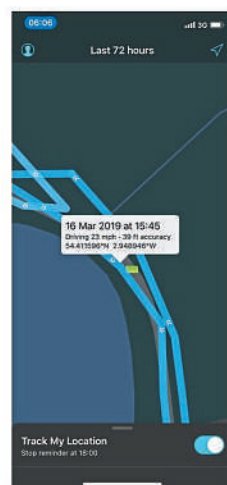
## DELAWARE PARTNERS WITH VERTIGIS TO EXPAND GEOSPATIAL ASSET MANAGEMENT CAPABILITIES

Global IT services company, Delaware has signed a partnership agreement with GIS software and services specialist, VertiGIS to develop and deliver **GIS and ERP (SAP) solutions** to help customers manage asset-intensive operations. By combining Delaware's market reach and expertise in delivering digital transformation with VertiGIS' sophisticated suite of fully developed products, the partnership will deliver **high-quality, cost-efficient geospatial solutions** to customers across multiple industry sectors. Together, the partners will provide a seamless interface between ERP (SAP) and GIS (Esri) systems and focus on delivering business value. [www.vertigis.com](http://www.vertigis.com)



## UCL VIRUS WATCH STUDY TRACKS LOCATION OF VOLUNTEERS DURING COVID-19 PANDEMIC

UCL Virus Watch Study, the most comprehensive household study of Covid 19 in England and Wales, is using a **mobile app** to track people's mobility following their first dose of vaccination and add a valuable dimension to the study. Findings to date suggest that people do not change the distance they travel away from their homes immediately after one jab, compared with how far they travelled prior to being vaccinated. The study is using Esri UK's smartphone **ArcGIS Tracker app** to examine changes in people's movements at different stages of the pandemic. Results generated are informing government planning, Public Health and NHS responses to Covid-19, as lockdown eases and the countries prepare for a future of managing the pandemic. [www.esriuk.com](http://www.esriuk.com)



**DON'T MISS THE NATION'S PREMIER GEOSPATIAL INTELLIGENCE EVENT**

**USGIF**  
**geoint** 2021  
SYMPOSIUM

**October 5-8**  
**St. Louis, Missouri**

# *Discovery and Connections*



*Learn from 30+  
hours of training and  
education courses*

*Network with more  
than 3,000 geospatial  
intelligence professionals*



*Engage with the latest  
technology, services, and  
solutions from 200+ exhibitors*

**Hear from senior defense and intelligence leaders**



**Sen. Roy Blunt**  
R-MO



**Dan Jablonsky**  
CEO, Maxar Technologies



**Barbara Ryan**  
Executive Director, World  
Geospatial Industry Council



**Jack Dangermond**  
CEO, Esri



**Lauren Knausenberger**  
CIO, USAF  
(Invited)



**Dr. Christopher Scolese**  
Director, NRO



**Dr. Cindy Daniell**  
Director of Research, NGA



**Gilman Louie**  
Partner, Alsop Louie  
Partners (Invited)



**VADM Robert Sharp**  
Director, NGA



**Dr. Peter Highnam**  
Deputy Director, DARPA



**Kelly McCool**  
Director, Navy Digital  
Warfare Office



**Dr. Anthony Vinci**  
Managing Director, Tracker  
Capital Management

**GEOINT2021.com**

## 1SPATIAL STRENGTHENS STRATEGIC PARTNERSHIP WITH ORDNANCE SURVEY

1Spatial and Ordnance Survey further strengthen their strategic partnership. Both organisations will combine their people, process, and technology with a focus on **identifying and delivering innovative solutions** that solve some of the **emerging challenges** within the **utilities industry**. The utilities industry must achieve a significant transformation to deliver key initiatives such as the target to **reach net zero emissions by 2050**. These challenges are driving regulation and business plans for the coming years. Delivering quickly and effectively on these initiatives requires much **greater collaboration**, both cross-sector and between expert teams. 1Spatial and Ordnance Survey are working closely with the utilities sector to further understand these industry challenges and their implications on existing business practices, to deliver innovative solutions into the sector, designed specifically to help utilities reach their goals. [www.1spatial.com](http://www.1spatial.com)

## GEOSLAM LAUNCHES NEW UNDERGROUND MINING SOLUTIONS

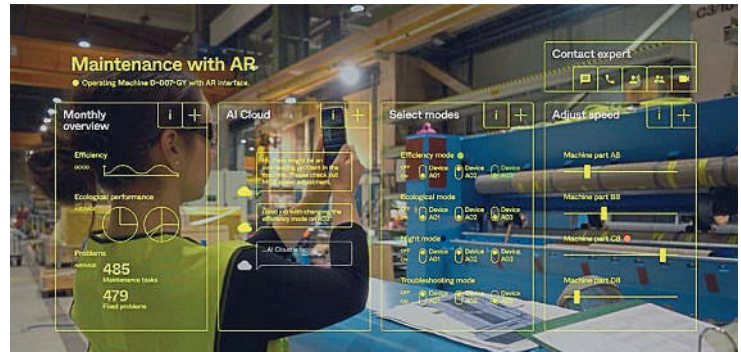
Global geospatial mapping specialist, GeoSLAM, has expanded its mining offering, building on its reputation in the sector to provide advanced underground mining solutions. The news follows the unveiling of its automated processing platform, **GeoSLAM Connect**, which provides users with the flexibility to process their data to their exact specifications through a series of interactive customisable script-based workflows. Many features of Connect are particularly useful for the mining sector, including the **automatic georeferencing**. Underpinned by the software, and backed by the company's expertise in the mining sector, the new innovations include **production progress mapping, convergence analysis and vertical mine shaft inspection monitoring** - all of which will sit alongside the existing solutions already available and in-use across the globe, including GeoSLAM Volumes for stockpile volumetric calculations. [www.geoslam.com](http://www.geoslam.com)

## VISIONTRACK MAKES FIRST US ACQUISITION TO DRIVE VIDEO TELEMATICS GROWTH

VisionTrack has completed the acquisition of SkyLab Solutions to accelerate its expansion into the US marketplace. The **multi-million-pound deal** for the California-based, fast-growing, fleet technology business represents the company's first major investment in North America and will support the roll-out of its **award-winning video telematics solution** in the region. The SkyLab Solutions team will join the recently formed VisionTrack Inc business. The company will continue to support existing SkyLab Solutions customers, with a focus moving forward to capitalise on VisionTrack's relationships with many telematics providers and target enterprise fleets. To achieve this, VisionTrack will introduce a range of PTCRB- and FCC-approved, **next-generation AI dashcams** and **MDVRs** that are underpinned by its Microsoft Azure, US-hosted IoT platform, Autonomise.ai. [www.visiontrack.com](http://www.visiontrack.com)

## HEXAGON EXPANDS ITS SMART DIGITAL REALITY CAPABILITIES WITH THE ACQUISITION OF IMMERSAL

Hexagon AB announced the acquisition of Immersal Oy, a pioneer and innovator of **spatial mapping** and **visual positioning solutions** used to produce **augmented reality (AR)** applications. AR applications enhance real-world experiences by augmenting a user's visual perception with the display of digital content in the physical world. AR's ability to weave **context-specific, 3D information** into physical spaces provides endless opportunities to save time, improve performance and reduce costs across a wide range of industries and applications – from surveying, construction, public safety and manufacturing to maintenance, training and navigation applications. The immersive experience can help boost task efficiency, improve safety protocols, optimise workflows, increase collaboration and much more. [www.hexagon.com](http://www.hexagon.com)



## FARO EXPANDS DIGITAL TWIN PRODUCT SUITE - ACQUIRES HOLOBUILDER

FARO Technologies announced the acquisition of HoloBuilder. HoloBuilder brings to FARO its **photogrammetry-based 3D platform**, which delivers hardware agnostic image capture, registration and viewing to the fast-growing **Digital Twin market**. With an initial focus on **Construction Management**, HoloBuilder's technology platform provides general contractors a solution to efficiently capture and virtually manage construction progress using **off-the-shelf 360° cameras**. HoloBuilder's SaaS platform will add fast and easy reality-capture photo documentation and added remote access capability to FARO's highly-accurate **3D point cloud-based laser scanning** to create the industry's first end-to-end Digital Twin solution. [www.faro.com](http://www.faro.com)

## EUMETSAT BECOMES LARGEST OPERATOR OF SENTINEL MISSIONS IN COPERNICUS 2.0 AGREEMENT WITH EUROPEAN COMMISSION

Europe's meteorological satellite agency, EUMETSAT, will become the largest operator of the Copernicus programme's Sentinel satellite missions under an agreement signed with the European Commission. Copernicus is a component of the **European Union Space Programme**. It looks at our planet and its environment for the benefit of all European citizens. It offers information services that draw from satellite Earth Observation and in-situ (non-space) data. The **€735 million**, seven-year, Contribution Agreement on the Implementation of the Copernicus Component of the Space Programme of the European Union extends and strengthens EUMETSAT's role in **ocean and atmosphere-monitoring missions** in the Earth observation programme. It entrusts EUMETSAT with the continued operation and exploitation of the existing Copernicus Sentinel-3 and -6 ocean-monitoring missions, the upcoming **Sentinel-4 and -5 atmosphere monitoring missions** and future missions designed to monitor carbon dioxide and the climate. [www.eumetsat.int](http://www.eumetsat.int)



# CONTOUR



# VECTOUR

## NEED A NEW IMAGE?

Vision Engineering, visualisation and microscopy innovators for over 60 years, is launching two new revolutionary ergonomic stereo displays for GIS and stereo photogrammetry applications.

**CONTOUR** - the first glasses-free stereo display on the market. You read that right – stereo without glasses. CONTOUR delivers an incredible quality stereo image, plus designed-in ergonomics improve user comfort and reduce fatigue, improving operator accuracy and productivity. The Ordnance Survey of Northern Ireland (OSNI) has said “*The quality of the imagery display is second to none*”.

**VECTOUR** – new ergonomic display solution which overcomes familiar operator issues with a robust and ergonomic design, including height and tilt adjustment, optimised image quality and brightness, maximising user comfort and enabling easier team viewing.

Experience this revolutionary technology, built around our three key principles of ‘best image quality, ergonomics and ease of use’ for yourself at our **InterGEO stand number 20B.25**

Alternatively, e-mail [stewart.mardell@visioneng.co.uk](mailto:stewart.mardell@visioneng.co.uk) or call **+44 (0) 1483 927165**.

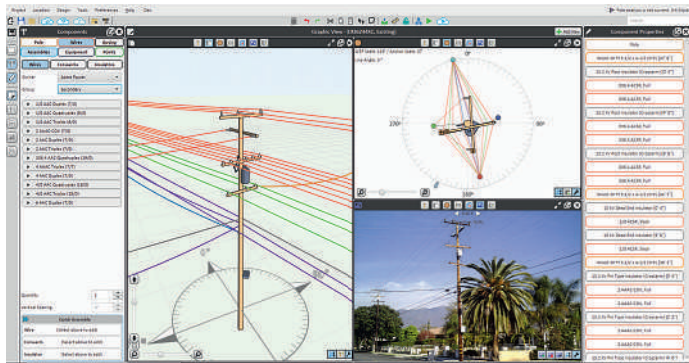
## TELEDYNE OPTECH LAUNCHES CZMIL SUPERNOVA

Teledyne Optech and Teledyne CARIS, both Teledyne Technologies companies and global providers in advanced lidar sensors and marine mapping software, announce their next generation bathymetric lidar, the **CZMIL SuperNova**. The CZMIL SuperNova boasts the best depth performance and the highest green laser point density in its class. Introducing **SmartSpacing technology** for even and efficient point spacing, real-time processing capability for reduced post-processing time and configurable modes for **maximizing performance** in different water environments, the SuperNova provides a wide range of inputs for climate change modelling and is ideal for inland water environments, base mapping for coastal zones and shoreline. [www.teledyneoptech.com](http://www.teledyneoptech.com)



## BENTLEY SYSTEMS ANNOUNCES ACQUISITION OF SPIDA

Bentley Systems announced the acquisition of SPIDA Software, developers of specialized software for the design, analysis, and management of utility pole systems. Founded in 2007 in Columbus, Ohio, SPIDA offers modeling, simulation, and data management software solutions to **electric** and **communications utilities**, and their engineering services providers, in the U.S. and Canada. The integration of SPIDA within **Bentley's OpenUtilities engineering software** and **grid digital twin cloud services** will help address the challenges of transitioning to new renewable energy sources including for electric vehicle charging, of joint usage of utility poles to support **broadband networks' 5G expansion**, and of modernizing and hardening the electric grid to maintain reliability and resilience. [www.bentley.com](http://www.bentley.com)

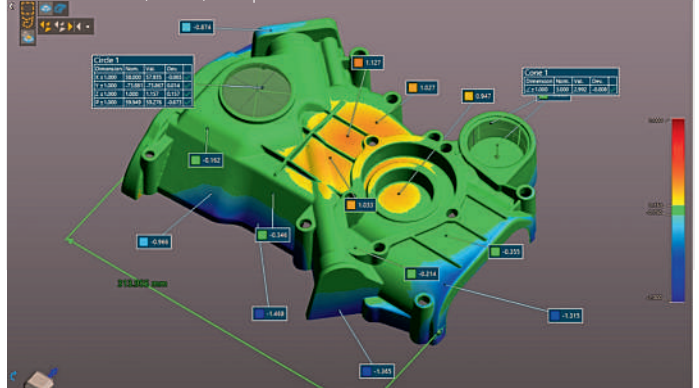


## TRIMBLE EXPANDS ITS GEOSPATIAL AUTOMATED MONITORING PORTFOLIO

Trimble announced the addition of a geotechnical portfolio to its geospatial automated monitoring portfolio through a collaboration with **Worldsensing**, a wireless connectivity technology provider and a manufacturer of geotechnical IoT monitoring systems. The collaboration enables survey, geotechnical and structural engineers to seamlessly expand their **monitoring business opportunities** with a comprehensive solution that incorporates geotechnical and geospatial data. Data from a variety of **geotechnical** and **geospatial sensors**—from tiltmeters, piezometers and crack gauges to GNSS receivers and total stations—combined with **wireless communication** and **robust software** create powerful monitoring solutions. This provides unparalleled movement analysis to monitor transportation infrastructure, buildings, structures, dams, mines as well as landslides and natural hazards. [www.trimble.com](http://www.trimble.com)

## CREAFORM ANNOUNCES THE RELEASE OF VXELEMENTS 9.

Creaform, the worldwide provider of automated and portable 3D measurement solutions and engineering services, announced the release of the latest version of its VXelements platform. Several new features as well as existing features enhancements were developed to provide **significant improvements**. Whether in VXscan, VXinspect, VXmodel, or VXscan-R, experts and beginners alike will discover exciting, new, and improved tools that will make their work much easier, faster, and profitable. [www.creaform3d.com](http://www.creaform3d.com)



## GMV DEVELOPS A NEW MARITIME GALILEO RECEIVER

Under the Advanced Shipborne Galileo Receiver Double Frequency (ASGARD) project the technology multinational GMV is collaborating with the defence and security company Saab, to develop a new civil, legislation-compliant, **Galileo-signal-using maritime receiver**. Co-funded by EUSPA (former GSA), ASGARD aims to boost Galileo take up in maritime transport by developing **shipborne e-GNSS** (European GNSS) **data-processing receivers**. Ships operating under the International Convention for the Safety of Life at Sea (SOLAS) have to be fitted with a maritime GNSS receiver compliant to the international standards of the International Maritime Organization (IMO). [www.gmv.com](http://www.gmv.com)



## NORTHAMPTONSHIRE FIRE AND RESCUE SERVICE ADOPTS GIS SOFTWARE FOR RISK ANALYSIS

Northamptonshire Fire and Rescue Service (NFRS) is the latest fire service to select a **Geographic Information System** (GIS) for understanding and resourcing to risk. Cadcorp SIS Desktop, Cadcorp Workload Modeller, and Cadcorp Risk Modeller, were procured along with training, support, and related services. Risk Modeller is specifically designed for locating, assessing, and analysing risk coverage and will assist NFRS in producing their **Integrated Risk Management Plans** (IRMP). The software will be used to create risk maps based on historical data, projected data, and demographics as well as changes to population distribution and transport links. It will test the impact of various risk factors and assist the fire service in both evaluating progress and planning its future direction. [www.cadcorp.com](http://www.cadcorp.com)

## SEPTENTRIO ANNOUNCES PARTNERSHIP WITH XENOMATIX

Septentrio, a provider of high-precision GNSS/INS positioning solutions, and Xenomatix, provider of true-solid-state-LiDAR technology for autonomous applications and road management solutions, are starting a partnership enabling **high-quality Lidar solutions**. Xenomatix will be using the compact and robust **GNSS/INS receiver** from Septentrio, **AsteRx SBi3 Pro+**, to provide millimeter accurate analysis of pavement conditions using global positioning coordinates. Septentrio's high-quality GNSS/INS will be a part of Xenomatix' **Road LiDAR** called **XenoTrack**, which has been the solution of choice for road surveyors and road management companies. Septentrio's **AsteRx SBi3**, high-performance RTK GNSS/INS receiver with a dual antenna setup, ensures cm-accurate geotagging of the XenoTrack point cloud frames for relative and global millimeter accuracy over large distances. [www.septentrio.com](http://www.septentrio.com)



## TALLYSMAN INTRODUCES EXTENDED FILTERING TO ITS TW3900 FAMILY OF ACCUTENNA PRECISION ANTENNAS

Tallysman Wireless announced new eXtended Filtering (XF) features to the TW3900 series of Accutenna precision antennas. Tallysman has designed the XF feature to mitigate interference from all near-band signals and ensure that the antenna provides the purest GNSS signals. Worldwide, the radio frequency spectrum has become congested as many new **LTE bands** have been activated, and their signals or harmonic frequencies can affect GNSS antennas and receivers. In North America, the planned **Ligado service**, which will broadcast in the frequency range of 1526 to 1536 MHz, can affect GNSS antennas that receive space-based L-band correction service signals (1539 - 1559 MHz). New LTE signals in Europe [Band 32 (1452 - 1496 MHz)] and Japan [Bands 11 and 21 (1476 - 1511 MHz)] have also affected GNSS signals. Lastly, the **Inmarsat** satellite communication uplink (1626.5 - 1660.5 MHz) commonly used on maritime vessels can also affect nearby GNSS antennas. [www.tallysman.com](http://www.tallysman.com)

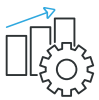


**PHASEONE**  
IMAGING BEYOND IMAGINATION

## P3 Payload for Drones

Unmatched inspection productivity and versatility

For DJI M300 and Mavlink supported drones



Productivity



Versatility



Quality



Smart Focus

- **Best in class sensor performance:** Making the most out of every flight
- **Largest image sensor:** Capturing more in every shot
- **Widest range of lenses:** Getting more details from a distance
- **Smart focusing:** Making every shot count



Discover more at  
[geospatial.phaseone.com](http://geospatial.phaseone.com)



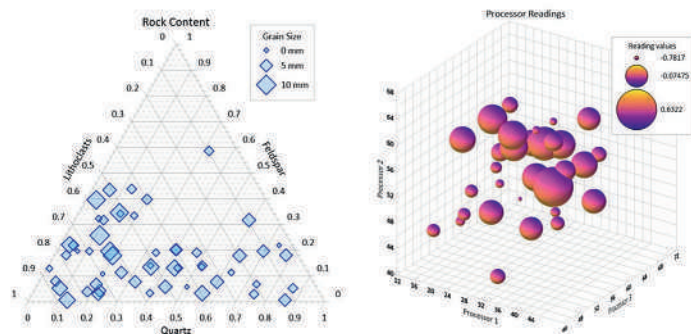
## COBHAM SATCOM LAUNCHES XTR – A NEW GENERATION ANTENNA PLATFORM

Cobham SATCOM, a provider of radio and satellite communications solutions to the maritime industry, has announced the launch of its new **SAILOR XTRTM antenna platform**. The SAILOR 1000 XTR Ku is the first of a new generation of software-controlled antenna systems designed for quick deployment, operational reliability, simplicity, and best-in-class radio frequency (RF) performance. Developed and designed by **Cobham SATCOM**, SAILOR XTRTM integrates the best of the **SAILOR VSAT technology** into a new platform with cutting-edge software and electronic capabilities that prepare it to operate in future satellite constellations in LEO, MEO, GEO and HEO orbits. The **one-metre antenna** has a new simplified and robust pedestal for better antenna performance and easier and simpler conversion between Ku- and Ka-bands. [www.cobhamsatcom.com](http://www.cobhamsatcom.com)



## GOLDEN SOFTWARE ENHANCES GRAPHER PACKAGE

Golden Software, a developer of affordable software for visualizing and analyzing diverse data sets, has announced significant upgrades to its scientific graphing package, Grapher. The new version is **faster** and offers a **broader, more consistent selection of features** across all plot types. Grapher is used extensively by **scientists and engineers** in oil & gas operations, environmental consulting, climate research, mineral exploration, and academic pursuits. The package offers deeper insights into diverse data sets, including chemical, physical, geologic, and geospatial data, through 80 different 2D and 3D plotting types. [www.goldensoftware.com](http://www.goldensoftware.com)



## LINCAD APPOINTS ELTRON TECHNOLOGIES AS NORTH AMERICAN SALES AGENT

Lincad announced that it has appointed Eltron Technologies to assist with business growth across the USA and Canada. Focused on the **defence** and **industrial OEM** market segments, Eltron Technologies is a manufacturer's representative partner with agents operating across the whole of **North America**. Eltron Technologies will be focused on **securing new customers** for Lincad's latest range of batteries and chargers suitable for a range of military applications and other applications that require military grade performance. Eltron Technologies will also be promoting Lincad's bespoke design and manufacturing service. Eltron Technologies has been operating since 1984 and supports several international clients in North American defence and industrial markets. [www.lincad.co.uk](http://www.lincad.co.uk)

## NORTH DAKOTA DEPARTMENT OF TRANSPORTATION SELECTS GEOCUE TRUE VIEW LIDAR/IMAGING TECHNOLOGY

North Dakota Department of Transportation recently acquired a GeoCue True View 640 3D Imaging System (3DIS) for their UAS program. GeoCue's True View 3D Imaging Sensors allow for both **drone LIDAR** and **imagery** to be collected in a single flight on most UAS platforms. The simultaneous data collection, bundled fusion processing software and data management package offers a **fully integrated solution** giving NDDOT a significant advantage over traditional LIDAR/camera systems as they can single-pass collect, process, and deliver high quality fused 3D data without leaving the True View ecosystem. [www.geocue.com](http://www.geocue.com)



## AIRBUS COMPLETES INTEGRATION OF 3RD COPERNICUS SENTINEL-2

Airbus has finished the integration of the Copernicus Sentinel-2C satellite. It is the third of its kind and will now be shipped to Munich to undergo extensive **environmental tests** to prove its readiness for space. The test campaign will last until **March 2022**. The data gathered by Sentinel-2 satellites are used for monitoring land use and changes, soil sealing, land management, agriculture, forestry, natural disasters (floods, forest fires, landslides and erosion) and to assist humanitarian aid missions. Environmental observation in coastal areas likewise forms part of these activities, as does glacier, ice and snow monitoring. [www.airbus.com](http://www.airbus.com)



# ARROW SERIES®

**ANNOUNCING NEW EOS ARROW SERIES® PLUS MODELS**

*More signals, more sensors, more possibilities.*



## **NEW FEATURES INCLUDE**

Support For **Additional GNSS Signals & Differential Correction Sources**  
**Even Longer Battery Life**

**1-4cm Accuracy Anywhere In The World**

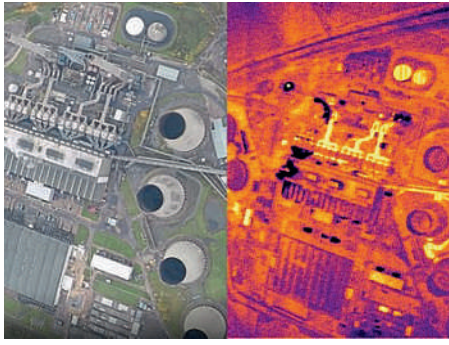
**Works With Upcoming Galileo High-Accuracy Service (HAS)**

**Built-In Support For Third-Party Sensors and Instruments**



[EOS POSITIONING SYSTEMS]

[WWW.EOS-GNSS.COM](http://WWW.EOS-GNSS.COM)



## SATELLITE VU RAISES £3.6M FOR THERMAL SATELLITE INSIGHTS TO SUPPORT THE GREEN INDUSTRIAL REVOLUTION

Satellite Vu has raised a £3.6m (US\$5m) seed round led by Seraphim Capital to launch the world's first satellite constellation capable of **imaging the thermal footprint of any building on the planet** every one to two hours. Satellite Vu's constellation of miniaturised satellites will use high resolution infrared cameras to collect **temperature data** day and night about both the natural and built environment. Being less than 1/10th of the size and cost of other infrared imaging satellites, Satellite Vu is unique in being able to **measure the heat signature** of any building anywhere multiple times per day. This enables Satellite Vu to derive new insights about both the building and how it is being used. [www.sprint.ac.uk](http://www.sprint.ac.uk)

## SCHNEIDER ELECTRIC ANNOUNCES NEW FEATURES FOR ARCFM EDITOR XI

Schneider Electric, a provider of Geographic Information System (GIS) solutions for utilities and communication providers, announced the release of ArcFM Editor 11.3, the latest update to ArcFM Editor XI built specifically in **ArcGIS Pro** and for **Esri's Utility Network**. This latest release of ArcFM Editor XI provides new ways for an overall efficient and better editing experience, most notably with the addition of **Conduit Manager XI** for the Utility Network. Users can easily create and manage dense underground networks and facilities like vaults, manholes, ducts in 3D while adhering to all network rules. Other new features and capabilities include a simple and intuitive duct layout editor to create, assign, modify and align ducts on walls in 3D, cross-sectional duct information that can be shared and traced across the organization and more. [www.se.com](http://www.se.com)

## XYZT.AI BECOMES A MEMBER OF THE OPEN GEOSPATIAL CONSORTIUM

xyzt.ai, a high-tech company offering an innovative visual analytics SaaS (Software as a Service) platform for big location data, has joined the Open Geospatial Consortium (OGC), the global **Resource for Geospatial Information and Standards**. Joining as a **start-up member**, xyzt.ai welcomes this membership and wishes to strengthen its presence amongst the **key stakeholders of the geospatial community**. xyzt.ai will leverage the membership to accelerate its adoption of industry standards and regulations. Through the membership, it will also contribute to the innovation and proliferation of data-driven geospatial AI algorithms and APIs. [www.xyzt.ai](http://www.xyzt.ai)

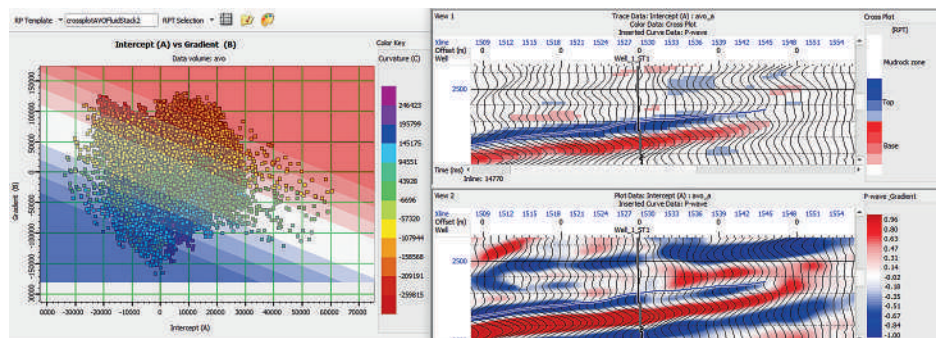
## SENSEFLY INTRODUCES EBEE TAC FIXED-WING UAS

senseFly announced the launch of eBee TAC, an advanced fixed-wing **Unmanned Aircraft System (UAS)** optimized for covert tactical mapping operations in defence, security and governmental sectors. The eBee TAC offers active field personnel access to accurate and reliable location data and maps, delivering the **field intelligence** and **situational awareness** needed to act with confidence and precision across rapidly changing environments. More importantly, the eBee TAC is fully **National Defense Authorization Act (NDAA)** compliant. At just 1.6 kg (3.5 lbs), eBee TAC is a lightweight, ultra-portable and robust solution specially designed for tactical mapping and analysis in defense applications and its product platform is currently employed by U.S. forces. [www.sensefly.com](http://www.sensefly.com)



## CGG LAUNCHES GEOSOFTWARE 11.0 INTEGRATED PORTFOLIO FOR RESERVOIR CHARACTERIZATION

CGG GeoSoftware has launched version 11.0 of its extensive portfolio of reservoir characterization and petrophysical interpretation software solutions. GeoSoftware 11.0 is a milestone achievement, **integrating all of GeoSoftware's solutions**, including Jason, HampsonRussell, PowerLog, RockSI, InsightEarth and VelPro, so that they can now **work together on a single platform**. This advanced integration features flexible cross-product workflows to **improve E&P project performance** and provide a better understanding of **reservoir properties**. Continuous innovation leveraged in GeoSoftware 11.0 includes enhanced cloud and machine learning capabilities, optimized computing performance and a superior user experience. [www.cgg.com](http://www.cgg.com)



### RMSI PARTNERS WITH ENZEN UK TO SUPPORT SCOTIA GAS NETWORK (SGN), UK

RMSI, a global provider of geospatial and engineering solutions, has been awarded with a GIS application support and maintenance project for **Scotia Gas Network (SGN)**, UK's most innovative gas distribution network company. The engagement is in partnership with **Enzen**, as part of which RMSI will manage the **Esri-based GIS Application** requirements for SGN for a period of 5 years. RMSI will be providing support and maintenance services to SGN for Esri 10.x based applications; GIS Core 10.1.1, GIS PRM & GIS Web 10.1.1 classified as core front-office applications. The project is managed by RMSI professionals providing L2 and L3 support to SGN users on these GIS applications. [www.rmsi.com](http://www.rmsi.com)

### THURAYA LAUNCHES SATTRACK, A TRACKING AND MONITORING SERVICE FOR ITS MARITIME CUSTOMERS

Thuraya, the Mobile Satellite Services (MSS) subsidiary of the UAE-based Al Yah Satellite Communications Company (Yahsat), has launched its **web-based SatTrack maritime tracking and monitoring service** in partnership with FrontM, a international developer of software applications. Developed for vessels and fleets serviced by the **Thuraya MarineStar Solution** (supporting voice, tracking and monitoring), SatTrack facilitates sustainable fishing practices, improved crew welfare and safety, better fleet visibility and management, and also onboard real time condition monitoring. [www.thuraya.com](http://www.thuraya.com)

### AWS ANNOUNCES GENERAL AVAILABILITY OF AMAZON LOCATION SERVICE

Amazon Web Services, (AWS), an Amazon.com company, announced the general availability of Amazon Location Service, a new service that makes it easier and more cost-effective for customers to **add location functionality to their applications** without compromising on user privacy or data security. With Amazon Location Service, customers can embed location functionality in their applications using data from **location-based service (LBS)** providers **Esri** and **HERE Technologies** to provide maps, points of interest, geocoding (converting location information to a point on a map), route planning, geofencing (creating virtual perimeters), or asset tracking. Amazon Location Service is as low as 1/10th the cost of the most common LBS providers, and customers pay only for the number of user requests, assets tracked, or devices managed. [www.aws.amazon.com](http://www.aws.amazon.com)

### NEW PARTNERSHIP CREATES THE WORLD'S MOST CAPABLE COMMERCIAL SAR-ELETTRO OPTICAL SATELLITE CONSTELLATION

Two global providers of Geospatial and Earth Observation data and services, e-GEOS, an Italian Space Agency (ASI- 20%) and Telespazio (80%) company, and ISI (ImageSat International), a provider of space-based intelligence solutions, have announced a partnership to form the world's most capable commercial Elettro Optical-SAR earth observation satellite constellation. e-GEOS and ISI have established a **strategic alliance**, by bringing together the **world-class satellite assets** of both companies to form a **High Revisit- Ultra High Resolution EO-SAR constellation** that will propose to the market the best assets synergy to match the market's ever evolving operational needs. The virtual joint constellation is presently comprised out of **8 ultra-high performance satellites data** including five COSMO-SkyMed and COSMO-SkyMed second generation dual use SAR satellites and ISI three EROS Next Generation Elettro Optical ultra high resolution satellites. [www.e-geos.it](http://www.e-geos.it)

### UAVOS DEMONSTRATES ITS CUSTOMER UVH-500 CARGO DRONE

UAVOS recently completed a series of flight demonstrations of its converted UVH-500 unmanned helicopter for a customer. The UVH-500 UAV demonstrated **efficient performance of repetitive heavy-lift operations** dropping cargo of **100 kg** (220 lbs) at specified locations and the ability to operate day and night in adverse weather conditions. The UVH-500 UAV is supposed to be operated for delivery goods in remote areas once testing is complete. The UVH-500 is a converted drone which is based on the piloted **CH-7 helicopter**. The UVH-500 aircraft's 353-pound (160 kg) cargo capacity is ideally suited for quicker and more sustainable transport time-sensitive deliveries reducing time-in-transit, and operational costs. [www.uavos.com](http://www.uavos.com)



### TOPCON POSITIONING GB MANAGEMENT SYSTEMS ACCREDITED TO ISO9001:2015

Topcon Positioning GB has solidified its commitment to customers and partners for its quality of service and products, by improving its management systems to align to the requirements of the internationally recognised ISO 9001-2015 standard, accredited by the **British Standards Institute (BSI)**. The accreditation means the business, headquartered in **Tamworth** and operational across the country, operates a quality management system in line with BSI standards. The award relates to Topcon's supply, maintenance, training and product support for high precision measurement technology, software and data. [www.topconpositioning.com](http://www.topconpositioning.com)

