

COMPANY SHOWCASE

Our regular 'Company Showcase' feature is the opportunity for suppliers of goods and services from all branches of the geomatics industry to acquaint readers with their latest offerings. Innovation is key to success in today's geomatics market place... one where traditional boundaries are being blurred by the latest trends in convergence and functionality, and it is vital that users can take advantage of these technological advances.

Surveying equipment now incorporates GNSS, GIS, Laser-based and communications, as well as optical capabilities to offer ever higher accuracy and greater local processing power at lower cost. Remote Sensing, in the widest sense, achieves new levels of resolution and precision from Laser, LiDAR, satellite, and aerial sensors, including those carried aboard a new generation of UAVs. The huge volumes of geodata captured by these and other sensors and devices are incorporated in ever more innovative information and location based services that support public and private sector decision makers at all levels, as well as citizens.

Look also for advances linked to the convergence between technologies, from CAD and BIM suites now incorporating GIS and decision support tools to smart phones used to collect and disseminate location-tagged data for commercial and citizen-oriented Open Source applications. For field use, consumers are now spoiled for choice with a wide variety of portable rugged and semi-rugged geodata collection devices based on PDA, tablet and notebook computers. And, of course, the advent of data and software as hosted services via the Cloud presents new challenges and opportunities for users everywhere.

This is an exciting decade for all sectors of the geomatics industry, with innovation powered by creativity, convergence and advances in several allied technologies. Watch this space to keep yourself up to date!

Next Available Showcase:
Spring 2022
(Published March/April)
Entry Deadline: January 2022

EOS POSITIONING

1



Eos Positioning Systems® (Eos) is the leading provider of submetre and centimetre GNSS (GPS) receivers for the mapping community. Our technical team designed the world's first Bluetooth® GNSS receiver for any device or app, including Apple iOS devices.

The Eos Arrow Series® GNSS receivers bring submetre and centimetre accuracy to iOS, Android, and Windows devices. They are compatible with all field data-collection and other mobile workforce apps. With real-time positioning and rugged design, teams get reliable accuracy in tough field conditions. The Arrow 100® and Arrow Gold® utilize all four global constellations, free SBAS corrections, support RTK networks, and provide an option for Atlas satellite-based differential correction services. Solutions are available for underground utility mapping and laser offsets/sideshots.

Visit www.eos-gnss.com for more information.

Contact Us:

www.eos-gnss.com
+1 450 824 3325 (Canada)

Technical Support:

Our technical team will return all inquiries promptly with next-business day response. We encourage you to please contact us. Please mention Geoconnexion in your inquiry.



Eos Positioning Systems

A Canadian Company
Tel: +1 450 824 3325
e-mail: info@eos-gnss.com
www.eos-gnss.com

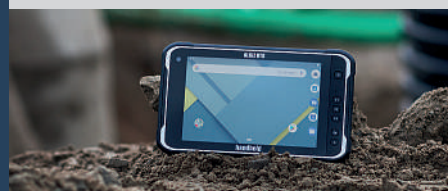
HANDHELD

2

handheld

RUGGED COMPUTERS FOR TOUGH ENVIRONMENTS

Handheld is a manufacturer of rugged tablets and handhelds for tough environments. All our devices can handle long workdays and rough conditions; Extreme temperatures, rain, sand and dust, getting dropped, high altitude? No problem.

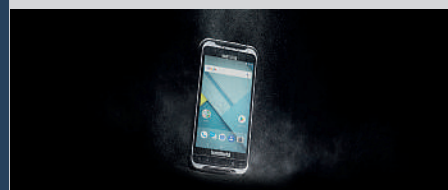


The ALGIZ RT8 8-inch ultra-rugged Android tablet offers a wide range of built-in tools and accessories. See: www.handheldgroup.com/algiz-RT8

Scan the QR-code to learn more:



Together with a strong network of reselling partners we supply rugged mobile solutions to a wide area of field applications. And with local service partners worldwide we can ensure quick assistance and turnaround time.



The NAUTIZ X6 ultra-rugged phablet comes with a 6-inch capacitive touchscreen and an IP67-rating. Learn more at: www.handheldgroup.com/nautiz-x6

Get in contact for a product demo, or meet us at Intergeo. We'll be in Hall 20, Stand E15.



Handheld Group AB

Tel HQ: +46 (0)510 54 71 70
Tel UK: +44 (0)1926 333 266
info@handheldgroup.com
www.handheldgroup.com



HEXAGON

Hexagon is a global leader in sensor, software and autonomous technologies. We are putting data to work to boost efficiency, productivity and quality across industrial, manufacturing, infrastructure, safety and mobility applications.

Our technologies are shaping urban and production ecosystems to become increasingly connected and autonomous – ensuring a scalable, sustainable future.

Hexagon (Nasdaq Stockholm: HEXA B) has approximately 20,000 employees in 50 countries and net sales of approximately 3.9bn EUR. Learn more at hexagon.com and follow us @HexagonAB.

The Smart Digital Reality™

Hexagon's Smart Digital Reality™ is a digital replica of a complete physical world, where all associated things, places and processes within it are machine-readable and subject to the power of algorithms. Every Smart Digital Reality has three defining characteristics:

- **Digitally accessible:** Provides seamless access to physical world information in a digital world
- **Infinitely connected:** Draws and acts on data from multiple sources simultaneously
- **Autonomously intelligent:** Leverages data to make unaided decisions and becomes smarter over time

Hexagon Head Office
Hexagon AB (Publ)
P.O. Box 3692,
SE-103 59 Stockholm, Sweden
Lilla Bantorget 15
SE-111 23 Stockholm, Sweden
Telephone: +46 8 601 26 20
Fax: +46 8 601 26 21
hexagon.com



Affordable Mapping + Precision GNSS Receiver + Ultra-Rugged Tablet = User-Friendly & Reliable Field Data Collection

We engineer our ultra-rugged products to maximise reliability, maintain constants, and eliminate variables. Our total solution delivers superior, rugged, field data collection.

The Mesa 3 Rugged Tablet maximises reliability with rigorous MIL-STD-810G testing. It's Juniper Rugged™, rated to IP68: dustproof, waterproof, shock and drop-proof. With battery life of 8-10 hours, you can hot-swap the battery when needed. Choose either Android™ or Microsoft® Windows 10 operating systems.

Add the ultra-rugged Geode GNS2 GNSS Receiver, rated to IP68, for professional, sub-metre accuracy at a budget-friendly price.

Our new Uinta mapping and asset tracking software uses drag-and-tap, has customisable forms and templates, and is highly affordable.

Juniper Systems' Total Solution yields a low total cost of ownership while providing high reliability in rugged hardware and user-friendly software.

InterGeo 2021: Visit us on Stand 23A.40



Juniper Systems Ltd
Birmingham, U.K.
+44 (0) 1527 870773
info@junipersys.com
<https://junipersys.com>



KOREC specialises in providing measurement solutions, surveying equipment and mapping systems for the UK and Ireland. We are proud to be one of the largest and most successful Trimble distributors in the world.

Our mission is to profitably help as many people, businesses and organisations be effective as possible. KOREC customers can therefore depend upon a sales consultancy and support team that has been fully trained to meet the needs of UK and Irish geospatial professionals in a diverse range of industries which include: survey, construction, engineering, rail, monitoring, utilities & forestry.

Our new KOREC Mapping division is a one stop shop for all things mapping. Whatever your application we can provide rugged hardware, specialist software and professional expertise to help with your field-to-office data management. Find out more: <https://bit.ly/korec-mapping-home>

You can also see the latest Tech Tips, webinar recordings and more videos on our YouTube channel: <http://bit.ly/korec-youtube>

www.korecgroup.com



Scan to visit our website

KOREC Group
UK 0345 603 1214
Ireland 01 456 4702
Email: info@korecgroup.com
www.korecgroup.com

PHASE ONE

6

PHASE ONE
IMAGING BEYOND IMAGINATION

Phase One is a world-leading provider of medium and large format cameras and imaging solutions for Geospatial and location-based inspection applications. Our high-resolution cameras and aerial systems are designed to acquire high-quality imagery and accurate data for 2D and 3D mapping, surveying, and inspection missions. Phase One cameras, P3 Payload, Nadir, and Oblique aerial systems easily integrate with UAVs and manned aircraft for easy and safe aerial access to challenging areas, larger surface coverage, and improved efficiency aerial data collection, resulting in an increased Return on Investment.

- Mapping • Inspection • Monitoring
- Railways • Roads • Bridges
- Wind Turbines • Power and Pipelines
- Mining • Surveillance



Phase One Industrial A/S (HQ)

Roskildevej 39
DK-2000 Frederiksberg
Denmark
Tel: +45 36 46 0111
Fax: +45 36 46 0222
geospatial.phaseone.com

RIEGL

7



RIEGL Waveform LiDAR Data:

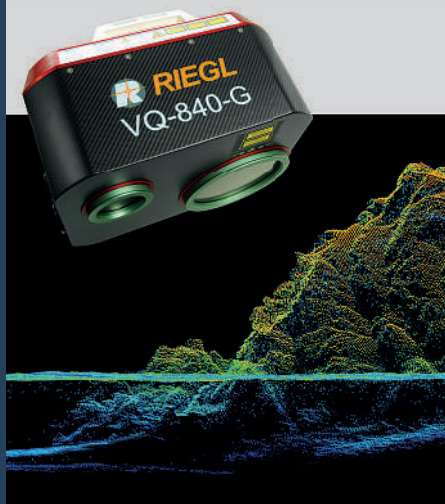
Meeting The Most Challenging Demands

RIEGL's wide portfolio of LiDAR sensors and systems is ready to provide you with measurement data of exceptional quality and content. We offer the solution optimally tailored to your special surveying tasks so you can obtain the perfect data to meet your mission requirements.

Want an example?

Rock formation "Les Deux Frères" in Cap Sicié, Toulon, France:

Topo-bathymetric LiDAR data above and below the water line simultaneously captured with the RIEGL VQ-840-G. This airborne laser scanner is ready for installation on various platforms including UAVs.



Experience the latest developments at INTERGEO 2021 LIVE at booth 20C.22 in Hanover and ONLINE!

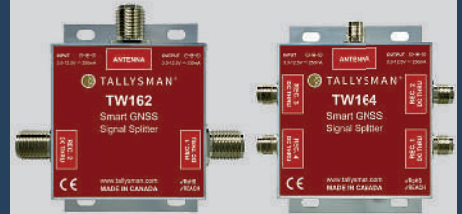
Order your voucher codes here:
intergeo@riegl.com

RIEGL

e-mail: office@riegl.co.at
newsroom: newsroom.riegl.international
www.riegl.com

TALLYSMAN

8



Discover Tallysman's® TW162, TW163, TW164 and TW165 Smart Power Full-Band GNSS Signal Splitters

Tallysman's full-band GNSS Smart Power Signal Splitters (SPSS) are available in four models: TW162, TW163, TW164, and TW165. The SPSS accepts power from all attached GNSS receivers, however, only one receiver actively provides power to the splitter and antenna; if the active receiver fails, the splitter will automatically switch to the next attached receiver. On the other hand, if the antenna fails and does not draw current, the SPSS will provide all the attached receivers with a current draw lower than 1 mA, indicating an antenna fault.

The SPSS offers the best in-class performance in terms of noise figure, isolation, and linearity. They are packaged in a robust, compact, lightweight, and water-proof (IP67) corrosion-protected aluminum housing.

The SPSS is available with either TNC or N-type connectors. Two gain options are available: standard gain to compensate for signal-splitting loss (TW162 and TW164) and 10 dB gain (TW163 and TW165).

Discover the reliable full-band GNSS Smart Power Signal Splitters for all your resilient GNSS applications.

For product inquiries:

Tallysman Wireless Inc.
36 Steacie Drive
Ottawa, Ontario, Canada
K2K 2A9

Tallysman

General Inquiries Tel: +1 613 591 3131
Email: info@tallysman.com
www.tallysman.com



Discover Tallysman's Line of Exceptional VeroStar™ Precision GNSS Antennas

The VeroStar™ wideband antenna provides best-in-class low elevation angle tracking of GNSS and L-band correction signals. The wideband spherical antenna element enables the VeroStar™ to deliver ± 2 mm phase centre variation (PCV), making it ideal for all high-precision surveying, positioning, and machine control applications.

Tallysman's VeroStar™ line of precision GNSS antennas consists of pole-mount, surface-mount, and embedded models. All models are available with either full GNSS band coverage or triple-band coverage (L1/L2/L5, G1/G2/G3, E1/E5ab, B1/B2/B2a). All VeroStar™ models support L-band corrections service.

Discover the exceptional VeroStar™ family of antennas for all your precision applications.



For product inquiries:

Tallysman Wireless Inc.
36 Steacie Drive
Ottawa, Ontario, Canada
K2K 2A9

Tallysman

General Inquiries Tel: +1 613 591 3131
Email: info@tallysman.com
www.tallysman.com



Welcome to the NEW Teledyne Geospatial where industry leading lidar sensors from Teledyne Optech meet world-renowned software workflows from Teledyne CARIS. Teledyne Geospatial offers a myriad of solutions for mapping land and sea featuring AI technology for noise classification to expedite processing times. Teledyne Geospatial is in constant pursuit of innovation, look out for new and exciting products in the coming year and visit us in 2021 at InterGEO, Ocean Business and GeoBusiness.

CZMIL SuperNova is the latest release from Teledyne Geospatial boasting the best depth performance and highest green laser point density in its class. SuperNova features real time processing capability and configurable modes for maximizing performance in different water environments. With new SmartSpacing technology, SuperNova ensures points are evenly and efficiently spaced. This solution is completed by CARIS Base Editor software for seamless data processing capability. Leveraging AI techniques for land/water discrimination and noise classification the CZMIL SuperNova bathymetric solution effectively delivers on marketplace demands for efficiencies in the processing workflow.

Events:

InterGeo – Sept. 21-23, 2021 – Messe Hanover – Hall 20 Booth 20C.16

Ocean Business – Oct. 12-14, 2021 – Southampton, UK – Stand N9 and N10

Geo Business – Nov. 24-25, 2021 – ExCel London – Stand D66



Teledyne Optech

300 Interchange Way,
Vaughan, ON L4K 5Z8
VAU_inquiries@teledyneoptech.com
www.teledyneoptech.com



Vision Engineering, microscopy and visualisation innovators since 1958, has developed two new, next-generation stereo displays for GIS and geospatial professionals.

CONTOUR is a breakthrough technology that enables you to study and share stereo imagery without the need for polarised glasses. Contour delivers a unique combination of stereo image clarity, brightness, zero-ghosting, ease of use and operator comfort.

VECTOUR utilises beam splitter stereo display technology, but in an all new, easy-to-use form factor that delivers exceptional image quality and brightness. Uniquely, it features ergonomic advantages of height and tilt adjustment to aid user comfort and support team viewing.

Both Contour and Vectour are compatible with stereo supporting GIS software so if you are already using beam-splitter displays or NVIDIA 3D Vision, there's no need to change your workstation or graphics card.

CONTOUR and VECTOUR are your new 'go-to' stereo display systems. See for yourself at our INTERGEO Stand 20B.25

Vision Engineering Ltd

The Freeman Building
Galileo Drive, Send, Woking
Surrey, GU23 7ER, UK
Tel. +44 (0)1483 248300
E.stewart.mardell@visioneng.co.uk
www.visioneng.com/solutions/geospatial/