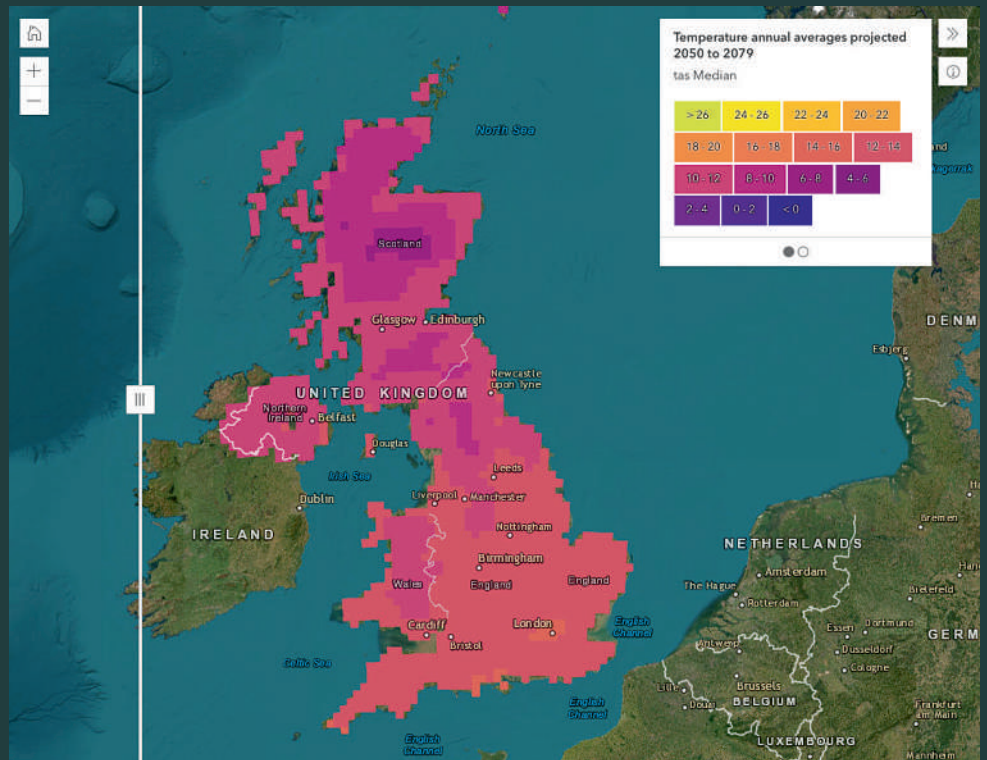


# NEWS & EMERGING TECHNOLOGY

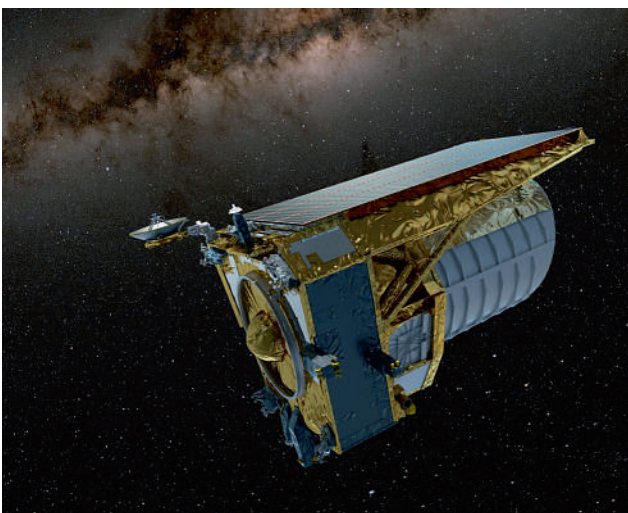
## MET OFFICE MAKES CLIMATE DATA MORE ACCESSIBLE WITH ESRI GIS

The Met Office's Climate Data Portal has gone live, giving organizations improved access to climate data and other resources, allowing them to better understand and respond to climate change. Part of the Met Office's wider strategy to maximise the benefits of its data, the portal contains **60 different data layers**, as well as guidance and information. Built using geospatial technology from **Esri UK**, the portal makes it easier for businesses or government organisations to combine open climate data with their data and reveal the future impact of extreme conditions on their operations, including **heatwaves, floods, or droughts**. The project is part of the strategic partnership between the Met Office and Esri UK who have been working together for over 20 years. [www.esriuk.com](http://www.esriuk.com)



## EYES ON THE DARK SIDE – SUCCESSFUL LAUNCH FOR EUCLID SPACECRAFT

The European Space Agency's (ESA) Euclid science spacecraft has been successfully launched from Kennedy Space Centre. A high-precision **1.2m diameter** telescope and payload module designed and built by Airbus will enable Euclid to explore the composition and evolution of the Universe including the role of dark matter and dark energy. Built by **Thales Alenia Space** for ESA, Euclid will collect high-resolution images in visible and infrared wavelengths. Within six years of observation, covering more than one-third of the entire sky, Euclid will measure the shapes of, and distances to, more than 1 billion galaxies. [www.airbus.com](http://www.airbus.com)



## ORORATECH SELECTS SPIRE GLOBAL TO PROVIDE EIGHT SATELLITES FOR WILDFIRE MONITORING CONSTELLATION

Spire Global, a global provider of space-based data, analytics, and space services, has signed an agreement with OroraTech, the global provider of space-based thermal intelligence, to build, launch and operate an **eight-satellite constellation** dedicated to global temperature monitoring. Once operational, it will represent the first and largest constellation of satellites dedicated to tracking and monitoring wildfires. Each spacecraft in the eight-satellite constellation, which will be launched in **mid-2024**, will carry OroraTech's proprietary thermal-infrared optical payload and data processing unit with **on-orbit fire detection capability**. The urgent data collected by the satellites will be downlinked via Spire's ground station network and delivered to OroraTech through an API. [www.spire.com](http://www.spire.com)





**FAIRiCUBE GOES IGARSS**

The FAIRiCUBE team is looking back to a successful participation at this year's **International Geoscience and Remote Sensing Symposium (IGARSS)**, which took place in **Pasadena, California** from July 16th through 21st. As the flagship conference of the worldwide **IEEE Geoscience and Remote Sensing Society (GRSS)**, the conference is a platform for sharing knowledge and experience on recent developments and advancements in geoscience and remote sensing technologies, particularly in the context of Earth observation, disaster monitoring, and risk assessment. Leading agencies such as **NASA**, the **Group on Earth Observation (GEO)**, and the **Committee on Earth Observation Satellites (CEOS)** were on the spot to promote scientific exchange between researchers and industry. With the conference's strong focus on Artificial Intelligence and specifically Deep Learning, FAIRiCUBE had an excellent platform for showing its achievements to the international audience. [www.fairicube.eu](http://www.fairicube.eu)

**TETRA TECH EXPANDS THEIR RIEGL MOBILE LIDAR FLEET**

Tetra Tech has been utilizing RIEGL LIDAR since 2019 for the high precision and efficiency it provides, and they have now added another Mobile unit to their portfolio, the **RIEGL VMX-2HA Mobile Mapping System**. This addition to their fleet of 3D technology in the Geomatics Division expands their scope of work on the West Coast due to increasing project demand in that region. As a global provider of consulting and engineering services, Tetra Tech relies on RIEGL technology to provide **innovative technical solutions** to their clients. The combination of RIEGL's Ultimate LIDAR hardware paired with the robustness and ease of registration with the software, RiSCAN PRO and RiPROCESS, allows for continuing advancement in their workflows. [www.riegl.com](http://www.riegl.com)



**TORUS GAINS CLEAR AND COMPELLING INSIGHTS WITH CLOUD GIS AND WEB MAPPING**

For social landlords, Torus, the drive for a stronger community required a deeper understanding of the challenges at the neighbourhood level. Their Development team's need was based not solely on the availability of land but on the promise of 'place'. Modeling required predictive analytics techniques and a GIS that could verify and showcase the research to a wide audience via web maps. To eliminate the need for costly internal ICT infrastructure, Torus selected **Cadcorp SIS Desktop** and **Cadcorp SIS WebMap** in the cloud. Torus created a **GIS SharePoint page** where staff can access, amongst many others, thematic maps showing the locations of embedded assets, growth potential, and crime hotspots. These maps were combined into an overall index of vitality. [www.cadcorp.com](http://www.cadcorp.com)



**TELEDYNE E2V SPACE IMAGING CELEBRATES THE SUCCESS OF ITS SENSORS AS AEOLUS DE-ORBITS**

Teledyne e2v Space Imaging, part of Teledyne Technologies, has designed and built sensors for Aeolus, the first **ESA satellite mission** to acquire profiles of Earth's wind on a global scale. Named after the Greek god of the winds, Aeolus is the fifth satellite in the **Living Planet Programme** of the **European Space Agency**. It has become one of the highest impact-per-observation instruments in existence. It is capable of observing weather systems from the surface of the planet and into the stratosphere **30 km high**. This has helped to predict how that environment will behave in the future. Since 2018, the data from the Aeolus satellite observations have been used to improve weather forecasts and climate models. [www.teledyneimaging.com](http://www.teledyneimaging.com)



**'FIRST-OF-ITS-KIND' MOBILE 3D MAPPING SYSTEM WILL SCAN 2 MILLION DATA POINTS A SECOND**

The University of Bradford (UK) has taken delivery of the UK's first Leica TRK700 Evo - a vehicle-mounted mobile mapping system capable of capturing **two million data points every second** to a resolution of **1mm**. The state-of-the-art device will be used to expand Virtual Bradford, the digital twin of the city, which initially covered 1.5 square miles of the historic city center and has been expanded to cover Saltaire. The TRK is one of several new mobile mapping devices bought by the university through the **AHRC CapCo scheme** which paves a roadmap towards enhanced national capability for conservation and heritage science, amongst other applications. Further capabilities include a 'BLK2FLY' autonomous flying laser scanner and a 'RTC360' terrestrial laser scanner. [www.bradford.ac.uk](http://www.bradford.ac.uk)



**SIMACTIVE USED WITH PHASE ONE CAMERAS FOR PRECISE PHOTOGRAMMETRY**

SimActive, a developer of photogrammetry software, announces the use of its Correlator3D product by Phase One camera users around the world. SimActive software is used to process imagery from the smallest sensor, the **IXM-50** which is typically used with drones, to larger ones such as the **PAS 880i NIR** which includes oblique and nadir systems for citywide mapping. Correlator3D allows importing very large projects in the native **Phase One IIQ format**. This eliminates the need for conversion to TIF and reduces project setup time when working with thousands of images. Then, the processing workflow remains the same regardless of sensor size. Outputs including DSMs, DTMs, point clouds, orthomosaics, and 3D meshes are all generated with the highest degree of precision. [www.simactive.com](http://www.simactive.com)

**HEXAGON EQUIPS THE WORLD'S FIRST FULLY AUTONOMOUS ROAD TRAINS**

Hexagon AB, the global provider of digital reality solutions, combining sensor, software, and autonomous technologies, has announced a landmark agreement with diversified mining company **Mineral Resources (MinRes)** to provide an autonomous haulage solution for a fleet of **120 fully autonomous road trains** in Australia, which will transform safety, productivity and sustainability in the region. The world-first, fully autonomous road trains are a full-site, truck-agnostic solution. The addition of unmanned and autonomous systems will form an essential part of the supply chain for the **MinRes Onslow Iron project** in Western Australia's **Pilbara region**. The centre of the autonomous platooning system is Hexagon's autonomous solutions stack integrating drive-by-wire technology with an autonomous management system to orchestrate vehicle movement in road train haulage. [www.hexagon.com](http://www.hexagon.com)

**CORN-FUSED?**

Visitors to York Maze will find this year's amazing maize maze, even more challenging thanks to the accuracy of a **KOREC-supplied Trimble TDC650 handheld GNSS**. York Maze Master Tom Percy, has created another fantastic maze using over 1 million maize plants in an area larger than 8 Wembley football pitches, making it the largest maze in Britain and one of the biggest in the world. Over the years, Tom has tackled many themes from Star Wars to Lego and Roald Dahl to Mr Men, all using a KOREC-supplied **Trimble Geo Explorer** with its **0.5m accuracy**. However, this year, Tom has upped the ante and opted for a handheld Trimble TDC650 (scalable positioning from meter to centimeters). The incredible result is a complex maize tribute to Tutankhamun to celebrate the 100th anniversary of his tomb being discovered. This year saw Tom cut over 5km of pathways into the 15-acre field to create the 'iconic' image of King Tut. [www.korecgroup.com](http://www.korecgroup.com)





**BLUESKY MADE A RECORD-BREAKING START TO THE 2023 MAPPING FLYING SEASON**

Aerial mapping company Bluesky International has made a record-breaking start to its 2023 flying season having captured more than **96 percent of its UK flying target** in the first half of the season. Taking advantage of recent clear blue skies, Bluesky has already flown circa **100,000 square kilometers** across areas of England, Scotland, Wales and the Republic of Ireland, capturing high-resolution aerial photography along with Colour Infrared imagery. The captured aerial data is then processed by an in-house team to produce geographically accurate 12.5-centimeter resolution **aerial photomaps** plus photogrammetrically derived **3D height models** which are used by government organizations and a host of other businesses working in sectors like insurance, utilities, environment and climate change, academia, civil engineering and planning. [www.bluesky-world.com](http://www.bluesky-world.com)



**GLOBALSTAR AND OWAKA SAFEGUARDED 15,000 PARTICIPANTS IN RECORD YEAR FOR ADVENTURE AND EXTREME SPORTS EVENTS**

Globalstar Europe Satellite Services, a wholly owned subsidiary of Globalstar, announced that Owaka, a specialist Globalstar solutions partner, has had a record-breaking 12 months. Organizers of extreme **sporting competitions**, amateur cross-country events, and **rallies for motoring enthusiasts** increasingly chose tracking specialist Owaka to provide its proven all-in monitoring, communication, and emergency support systems. In the 12 months to July 2023 Owaka systems have tracked and safeguarded over **15,000 event participants**. At the heart of the system, the latest generation **SPOT Gen4 devices** carried by all competitors ensure that organizers know the exact location of each contestant. With SPOT, enabled by Globalstar's low-Earth Orbit satellite network, event officials and emergency support services can precisely track each participant's location, via a user-friendly display of GPS positions in real time via the Owaka Tracking platform. [www.globalstar.com](http://www.globalstar.com)

**JUNIPER**  
SYSTEMS

mesa pro

**mesa pro**

The world's first IP68 certified rugged tablet with active cooling

**YOUR OFFICE, ANYWHERE.**

The all-new Mesa® Pro Rugged Tablet now features an IP68 rating for ingress protection against solids and liquids, and uses an active cooling fan for the processor. It's easy to toggle between CAD programs, maps, and multiple apps with the 11th Generation Intel® processor. Use it in the office then take it to the field or job site. The Mesa Pro is the most versatile and rugged 10-inch tablet available.

**ROCK SOLID. | FIELD READY.**

Contact us today: [junipersys.com](http://junipersys.com) | [rugged@junipersys.com](mailto:rugged@junipersys.com) | +44 (0) 1527 870773 | +1.435.753.1881



**MESA PRO IS THE WORLD'S FIRST IP68-RATED RUGGED TABLET WITH ACTIVE COOLING**

Juniper Systems announced that the all-new Mesa Pro Rugged Tablet is now available featuring an IP68 rating for ingress protection. The Mesa Pro is the first IP68-rated rugged tablet that uses an **active cooling fan** to cool the system's processor. Ingress protection (IP) ratings are used across the electronics industry to rate the protection a device has against **solids** and **liquids** compromising internal systems. A rating of 6 is the highest protection from solids, such as dust, sand, rocks, etc. An 8 is a rating against liquid ingress, this includes drips, sprays, and submersion. Mesa Pro is rated to and capable of submersion at one meter for 45 minutes. [www.junipersys.com](http://www.junipersys.com)

**HANDHELD GROUP'S ALGIZ 10XR RUGGED TABLET NOW CERTIFIED ON VERIZON 5G NETWORKS**

Handheld Group, a manufacturer of rugged mobile computers, announced that its Algiz 10XR rugged Windows tablet has been officially certified to operate on the Verizon 5G wireless networks. This certification marks a significant milestone for the Algiz 10XR, as it enables **seamless connectivity**



and **enhanced communication capabilities** for users across the United States. The Algiz 10XR rugged tablet is purpose-built to endure the harshest environments, making it a preferred choice for professionals in industries such as field service, transportation, utilities, public safety, and more. The Algiz 10XR is engineered to meet stringent **MIL-STD-810 military standards** for ruggedness, ensuring it can withstand drops, vibrations, extreme temperatures, and exposure to dust and water. [www.handheldgroup.com](http://www.handheldgroup.com)

**GMV TO HEAD UP GALILEO GROUND SEGMENT AFTER SECURING A NEW CONTRACT WORTH OVER €200 MILLION**

Technology multinational GMV has recently been awarded a major contract by the European Space Agency (ESA). The contract entails newly developing the ground control segment for the in-orbit validation (IOV) system of the **Galileo Second Generation (G2G)**. Galileo, Europe's global navigation satellite system, is the proud flagship of the European Union's growing space activity. The primary objectives of the Galileo Second Generation, also known as G2G, are to introduce **new state-**

**of-the-art services and technologies**; improve existing services and tech; increase the accuracy and robustness of the system; strengthen security; and reduce the system's maintenance costs. These efforts seek to consolidate and enhance Galileo's position across the globe. Galileo currently serves more than **four billion users** worldwide, delivering global positioning, navigation, and clock synchronization services with a positioning accuracy of up to 20 cm. [www.gmv.com](http://www.gmv.com)



**CAPTURING GLASTONBURY FESTIVAL**

Photographing this iconic event is a key priority for event organizers where more than **200,000 people** gather to enjoy music across multiple stages at Worthy Farm in Somerset. Capturing aerial imagery is important for the organizers, as these images are used to review the staging positioning, and to plan future festivals across the vast, iconic area where Glastonbury is hosted each year. DEA Aviation, a technology-led provider of specialized aerial data acquisition services had its high-efficiency **Diamond DA-42 aircraft** fitted with a **Phase One PAS150** compact aerial camera system with an RS-50mm lens. The DEA experts chose Phase One imaging technology because it was "just right." The system could both capture and efficiently process the requisite high-quality aerial images and offer superior flexibility and ease of installation. [www.geospatial.phaseone.com](http://www.geospatial.phaseone.com)





## €20 MILLION B FUNDING ROUND PROPELS LEAF SPACE TOWARDS GOAL OF SEAMLESS SATELLITE CONNECTIVITY

Leaf Space, a global provider of ground segment services for satellite operators, announced that it has completed a capital increase for a total of **€20 million** (\$22 million) on top of the availability by the **European Investment Bank** of a loan for a further **€15 million** through **Venture Debt**. Launched in 2014, the Italian-headquartered company based in Lomazzo (Como) currently supports around 80 satellites and achieved for the first time this March more than 10,000 successful satellite passes during a single month. Since 2020, it has seen a three-fold year-over-year increase in core business revenue and significant growth in capacity demand. [www.leaf.space](http://www.leaf.space)



## NOMOKO JOINS THE OVERTURE MAPS FOUNDATION

Nomoko, a provider of real-world 3D data technology, announced that they have joined the Overture Maps Foundation, a non-profit organization dedicated to advancing open and accessible map data, as a Contributor member. Leveraging its **real-world 3D modeling capabilities**, Nomoko will collaborate alongside steering members, including Amazon Web Services (AWS), Meta, Microsoft, and TomTom, to create interoperable, accessible 3D datasets. The Overture Maps Foundation, established in December 2022, is committed to fostering both **collaboration** and **innovation** in the geospatial domain. By bringing together industry leaders, technology experts, and the broader community, the foundation spearheads the development of open-source tools and frameworks that empower individuals and organizations alike to harness the power of open map data. [www.overturemaps.org](http://www.overturemaps.org)

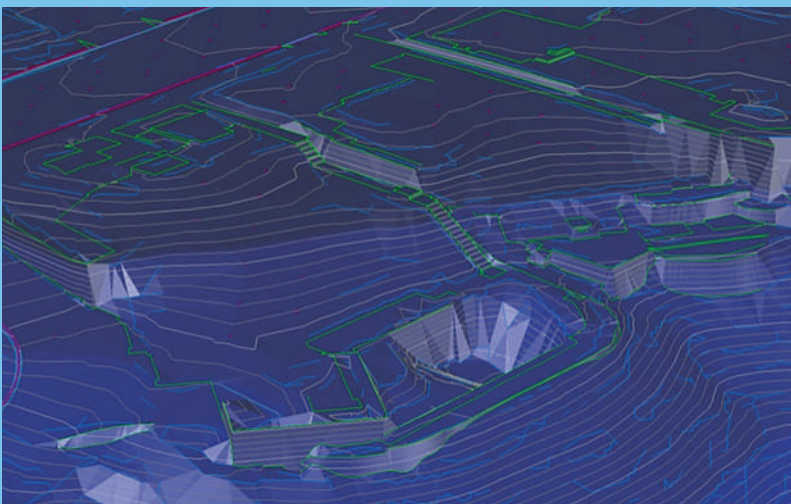
## GREENSEA DEMONSTRATES SUCCESSFUL UXO SURVEY TO LOCATE BURIED MUNITIONS

Greensea Systems, a provider of advanced robotics solutions, announced the successful demonstration of a mission to locate buried munitions in the surf zone. This UXO survey demonstrated the power and flexibility of OPENSEA to rapidly integrate and deploy a new sensor suite for the task while showcasing the capabilities of the **Bayonet 250 AUGV**, which was selected as a finalist in The Defense Innovation Unit's (DIU) **Autonomous Amphibious Response Vehicle** (A2RV) program's rapid prototyping phase. Out of 67 proposals, the Bayonet 250 crawler prototype, developed in partnership with Greensea, was chosen for its **exceptional performance** and potential to detect, identify, and neutralize naval mines and other explosive hazards in the challenging surf and beach landing zones. [www.greensea.com](http://www.greensea.com)



## HAWKEYE 360 RECEIVES \$58 MILLION IN SERIES D-1 FUNDING

HawkEye 360, a defense technology company for space-based radio frequency (RF) data and analytics, announced it has closed \$58 million in new funding. The funding will be used to **develop new space systems** and **expand analytics** that support high-value defense missions. This Series D-1 round was led by funds and accounts managed by BlackRock with additional funding provided by Manhattan Venture Partners and existing investors including Insight Partners, NightDragon, Strategic Development Fund (SDF), Razor's Edge, Alumni Ventures, and Adage Capital. [www.he360.com](http://www.he360.com)



## DATASIGHT RELEASES BREAKLINE BUILDER 4.0

DataSight, a geospatial SAAS company, announced the release of Breakline Builder 4.0, the latest version of its revolutionary and patent-pending cloud-based breakline-generating software solution. Breakline Builder 4.0 empowers users with an array of **new features**, enhanced security, and seamless integration capabilities, improving the way digital terrain models are built and analyzed. Breakline Builder 4.0 introduces several **user-centric enhancements** that significantly improve the overall user experience. Users are now able to **self-register** on the platform, simplifying the onboarding process and gaining immediate access to Breakline Builder's powerful capabilities. With each new registration, users will receive **100 free acres**, allowing them to try the software and hit the ground running with their mapping projects. [www.datasightusa.com](http://www.datasightusa.com)



**COMPASSCOM  
RELEASES UPGRADED  
TELEMATICS PLATFORM**

CompassCom Software has released Version 8.2 of the CompassCom GIS-centric hybrid telematics platform that can be deployed on premises or in the cloud for **real-time asset tracking** and **comprehensive fleet management**. The new version offers enhanced ease of use and more robust analytics and reporting functionality for safer, more efficient, and secure fleet operations. Developed on **Esri ArcGIS technology** and now supporting **JavaScript 4.0**, the CompassCom telematics software platform is used worldwide to track the real-time locations and status of personnel, vehicles, and other mobile assets. The platform is relied upon by critical infrastructure workforces – including public works and public safety offices – as well as departments of transportation and national government security agencies. [www.compasscom.com](http://www.compasscom.com)



**MIRA AEROSPACE SUCCESSFULLY COMPLETED APUSDUO SOLAR AIRCRAFT TEST FLIGHT**

Mira Aerospace, a joint venture of UAVOS, a developer and manufacturer of advanced unmanned systems, and Bayanat, a part of the Abu Dhabi-based G42, announced a successful test flight of the **ApusDuo solar-powered high-altitude pseudo satellite (HAPS)**. The flight took place on June 8, 2023, at the Huye aerodrome, the Republic of Rwanda. With all basic aircraft tests for the ApusDuo HAPS now complete, Mira Aerospace will proceed with preparations for stratospheric test flights. The ApusDuo HAPS successfully achieved a scope of test points, including flight stability check and controllability with a **payload of 3.6 kg** installed at high altitudes and C2 link performance evaluation (the communications link between a UAV and its ground station). [www.uavos.com](http://www.uavos.com)

**DISASTERS  
EXPO USA**

PREPARE | RESPOND | RECOVER



**SEPT  
27 & 28  
— 2023 —**

ANAHEIM  
CONVENTION  
CENTER

**THE LEADING EVENT FOR  
MITIGATING THE CONSEQUENCES  
OF THE MOST COSTLY DISASTERS**

[@DISASTEREXPOUSA](https://twitter.com/DISASTEREXPOUSA) | [#DisasterXCali](https://twitter.com/DisasterXCali)



**300**  
VISIONARY  
SUPPLIERS



**200**  
INSPIRATIONAL  
SPEAKERS



**1-2-1**  
BUSINESS  
ADVICE



REGISTER FOR  
TICKETS HERE

**REGISTER FOR TICKETS | [DISASTEREXPOCALIFORNIA.COM](http://DISASTEREXPOCALIFORNIA.COM)**



## BENTLEY SYSTEMS' ITWIN VENTURES ACQUIRES BLYNCYSY

Bentley Systems, the infrastructure engineering software company, announced the acquisition of BlynCSy, a provider of breakthrough artificial intelligence services for departments of transportation to



support operations and maintenance activities. The digital twin ecosystem focus of Bentley's iTwin Ventures portfolio is bolstered by accelerating the development and propagation of such **broadly valuable infrastructure asset analytics**. Founded in 2014 in Salt Lake City, Utah, by CEO Mark Pittman, BlynCSy applies **computer vision** and **artificial intelligence** in analyzing commonly available imagery to identify maintenance issues on roadway networks. BlynCSy's **disruptive AI services** replace costly and slow manual data collection efforts, reducing the need for personnel or specialized vehicles or hardware in the field and improving transportation owner-operators' awareness and timely mitigation of road conditions. BlynCSy detects over 50 different roadway safety issues, including the actual location of active construction work zones. [www.bentley.com](http://www.bentley.com)

## SCHNEIDER ELECTRIC AND ROK TECHNOLOGIES PARTNER TO HELP UTILITIES MIGRATE ARCFM AND ARCGIS SYSTEMS TO THE CLOUD

Schneider Electric and ROK Technologies announced a partnership to deliver a comprehensive managed services offering to utilities to migrate **ArcFM** and **ArcGIS systems** to the cloud. Schneider Electric will implement the migration of ArcFM to the cloud, and ROK Technologies will implement the migration of ArcGIS, while providing ongoing management of both the cloud environment and the ArcGIS Software. The complementary partnership, with Schneider Electric focusing on ArcFM and ROK on ArcGIS, will deliver a **more robust offering**, featuring superior cloud solutions, to utility customers. The partnership allows utilities to **outsource their GIS** from an on-site environment to a new server environment on the cloud, allowing greater flexibility and cost savings while bolstering utilities with staff support and augmentation. [www.se.com](http://www.se.com)

## CARLSON INTRODUCES STEM VIDEO GAME: HYDROLOGY ENGINEER

Carlson Software, celebrating its 40th anniversary as a company, has released a STEM video game named Hydrology Engineer. The video game is designed to teach hydrology, a subset of **civil engineering**, from a practical standpoint. Players will be introduced to both simple and complex concepts of hydrology work with the chance to compete for the most efficient design each month. The goal of the game is to **design a storm sewer system** from available inlets and pipe types and sizes that drains the site successfully, with no excessive pressure in the pipes overflowing at inlets and no excessive gutter spread in the streets that might cause **flooding** and **hydroplaning**. The game uses a photo-realistic depiction of a subdivision with low points in the streets that require the placement of inlets with catch basins and it must drain to a detention pond also found on the site. [www.carlsongaming.com](http://www.carlsongaming.com)



## TDI-BROOKS DEVELOPS NEW AUTO MINIVANE FOR ENHANCED SOIL TESTING

TDI-Brooks announces the successful development and testing of a new instrument, the Auto-Minivane. The Auto-Minivane instrument is a self-contained, stand-alone miniature **vane shear testing device** that can be used in a 0.5 m vertical-stroke format by an **onshore** or **offshore laboratory**. The 1-m-stroke format can be mounted onto a box corer at sea to measure soil strength deep into the box core soil sample. The new Auto-Minivane accurately and precisely measures the undrained shear strength of very soft to stiff saturated fine-grained clayey soils in an automated process, including its ability to automatically advance down a series of preset depths for successive soil measurements in an acquired box core. [www.tdi-brooks.com](http://www.tdi-brooks.com)



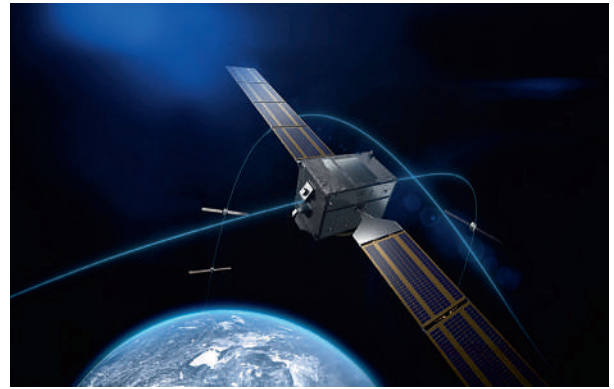
## BLUEFIELD GEOSERVICES EXPANDS OPERATIONS IN UK TO SUPPORT NORTH SEA OPERATIONS

Bluefield Geoservices (Bluefield), a subsea geotechnical services provider with operations in the UK and US, announced details of the company's most recent **phase of expansion**, which includes the **opening of a state-of-the-art facility** in Bedlington, England with convenient access to the Port of Blyth. Bluefield's new location will be used both to service existing geotechnical equipment and as an engineering hub for future product development. To further fuel the company's strategic commercial operations, Bluefield also recently appointed **Patrick O'Donnell** to the position of **Business Development Lead**. Mr. O'Donnell, who brings over 20 years of senior commercial experience of working in the offshore oil and gas industry to Bluefield, will be responsible for cultivating new and existing partnerships with North Sea developers. [www.bluefieldgeo.com](http://www.bluefieldgeo.com)



**THALES ALENIA SPACE CONFIRMS ITS KEY ROLE IN GALILEO 2ND GENERATION PROGRAM**

Thales Alenia Space, a Joint Venture between Thales (67%) and Leonardo (33%) has signed with the European Space Agency (ESA), acting in the name and on behalf of the EU Agency for the Space Programme (EUSPA) and the European Union represented by the European Commission, more than **300 M€** global amount contracts to design and build with its European consortium the **Galileo Second Generation (G2G) Ground Mission Segment** and execute System Engineering Activities. These contracts, in which Leonardo and Telespazio (Joint Venture between Leonardo 67 % and Thales 33 %) are also involved, will provide ESA with the delivery of the Ground Mission Segment infrastructure for the 2nd Generation of Galileo Satellites constellation as well as the System Engineering and Technical Assistance (SETA). [www.thalesaleniaspace.com](http://www.thalesaleniaspace.com)

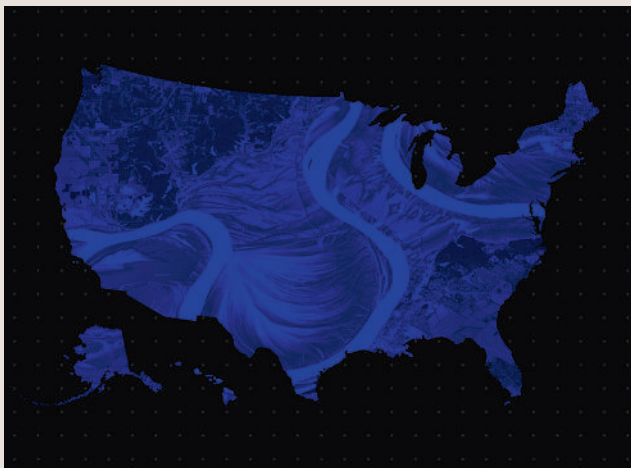


**TELEDYNE E2V SPACE IMAGING APPOINTS IMAGE S AS ITALIAN DISTRIBUTOR**

Teledyne e2v Space Imaging, part of Teledyne Technologies, announced that it has formally appointed iMAGE S as its Italian distributor to increase its market share in Italy. Headquartered in the region of Lombardia, Italy, iMAGE S was founded in 1994 as a point of reference for the industry of vision systems for applications in **machine vision**, artificial intelligence, **industry 4.0** and the **geospatial sector**, offering to its customers the best skills and the most innovative technologies in the field. Together, Teledyne e2v Space Imaging and iMAGE S will be working on **joint Earth Observation programs** and scientific and **exploration missions** with the European Space Agency (ESA), Agenzia Spaziale Italiana (ASI), and privately operated commercial space programs (new space). [www.teledyne-e2v.com](http://www.teledyne-e2v.com)

**FATHOM REVOLUTIONIZES FLOOD RISK INTELLIGENCE WITH NEW US FLOOD MAP**

Fathom, a global provider of water risk intelligence, has released a new US Flood Map; a cutting-edge tool that provides the most comprehensive climate-driven flood risk information for the United States. Responding to the inconsistent and incomplete coverage of existing datasets, the US Flood Map leverages the latest observation, terrain and climate information to present a consistent view of flood risk for all major flood perils, climate scenarios and time horizons. Thanks to its team of scientists, Fathom's US Flood Map offers **the most advanced hazard and risk information for the country, at 10m resolution**. Fathom's US Flood Map empowers engineers, climatologists, GIS professionals, asset owners and operators to make swifter, more informed decisions for their projects at pace and with confidence, using this comprehensive resource. [www.fathom.global](http://www.fathom.global)



**FREQUENTIS TRANSFORMS WEST YORKSHIRE FIRE & RESCUE SERVICE WITH CLOUD-BASED MOBILIZATION, COMMUNICATION, AND INCIDENT SOLUTION**

West Yorkshire Fire & Rescue Service (WYFRS) has selected control room solutions from Frequentis to enhance service delivery for the communities it safeguards - through better **resource allocation** and **coordination between emergency services** when responding to emergencies. WYFRS is the fourth largest fire and rescue service in the country, responsible for the safety of over **2.2 million residents** and the protection of **800 square miles of land**, covering five major metropolitan districts. The diverse landscape, which encompasses everything from vast rural countryside to towns and major cities, presents unique challenges: Frequentis' expertise in providing comprehensive control room solutions and dedication to delivering innovative technology to emergency service organizations has played a vital role in this successful collaboration. [www.frequentis.com](http://www.frequentis.com)



**CANADA'S RENOWNED MARINE INSTITUTE JOINS GLOBAL ENDEAVOR TO MAP ENTIRE OCEAN FLOOR**

The Nippon Foundation-GEBCO Seabed 2030 Project has announced a new partnership with the Memorial University of Newfoundland's Fisheries and Marine Institute – a center of excellence for marine research and education. Seabed 2030 is a collaborative project between **The Nippon Foundation** and **GEBCO** to inspire the **complete mapping of the world's ocean by 2030** and to compile all bathymetric data into the freely available GEBCO Ocean Map – it is also a formally endorsed Decade Action of the UN Ocean Decade. GEBCO is a joint program of the International Hydrographic Organization (IHO) and the Intergovernmental Oceanographic Commission (IOC) and is the only organization with a mandate to map the entire ocean floor. [www.seabed2030.org](http://www.seabed2030.org)



# GEOSPATIAL DRIVEN IMPACTS

Underground, Land & Sea to Sky



## GEO CONNECT Asia 2024

Wednesday 6th & Thursday 7th March  
Sands Expo & Convention Centre, Singapore

Conference and visitor registrations  
are now open!



co-located with



**DIGITAL  
CONSTRUCTION**  
Asia 2024



**MARINE  
& HYDRO**  
Asia 2024



**DRONES &  
UNCREWED**  
Asia 2024

Join us in Singapore in March to expand your contacts  
in Asia's fast expanding geospatial markets

For exhibition and sponsorship opportunities please contact:

[Rupert.Owen@montgomerygroup.com](mailto:Rupert.Owen@montgomerygroup.com) and/or [Mei@montgomerygroup.com](mailto:Mei@montgomerygroup.com)

Plan your attendance now!



Express your interest  
to participate

Visitor and conference registration opens on 10th October.

Register your interest at [www.GeoConnectAsia.com](http://www.GeoConnectAsia.com) / [www.DronesAsia.com](http://www.DronesAsia.com)

Organised by

Strategic Partners

1895 MONTGOMERY GROUP  
ASIA

Geo  
Works

SLA  
SINGAPORE  
LAND AUTHORITY

SGTECH  
WHERE TECH MEETS