

## A man of our times

Peter Fitzgibbon, Editor



Much has been written of the late Duke of Edinburgh's wide-ranging interests, from wildlife conservation to science and technology, and from citizenship to sports - roles that saw him as patron or president of more than 800 organisations.

Readers may also be familiar with his abiding interest in navigation, both as a patron of the Royal Institute of Navigation, which annually presents the Duke of Edinburgh's Navigation Award for Technical Achievement, and as Master of Trinity House between 1969 and 2011.

Trinity House Deputy Master Captain Ian McNaught paid tribute to the Duke's long association with the body that, *inter alia*, has a statutory duty to deliver reliable, efficient and cost-effective aids to navigation for mariners. "He had been

an integral part of our transformation into a lean organisation of 300 people making full use of technology and overhauled working practices to deliver the best possible service for the safety of the mariner, including LED lanterns, helicopters and satellite navigation systems."

Perhaps lesser-known was his advocacy of a British back-up to the US Global Positioning System (GPS) for resilient Positioning, Navigation and Timing (PNT) functions. He would therefore have been heartened by a recent exchange in the House of Lords when Lord Callanan, the Parliamentary Under Secretary of State at the Department for Business Energy and Industrial Strategy, faced questions on the topic.<sup>1</sup>

"PNT services from space underpin all 13 critical national infrastructure sectors, including national security, defence and transport. They are an important component of future technologies such as autonomous vehicles, smart cities and so on, so it is essential that we have our own autonomous capability," he responded.

It is understood that the UK's requirements for trusted PNT services will be confirmed shortly and a preferred space-based solution identified later this year as part of a national PNT strategy.<sup>2</sup>

<sup>1</sup> <https://hansard.parliament.uk/Lords/2021-03-10/debates/71224Co4-7FD7-48CA-B787-oECBC9B23431/GlobalNavigationSatelliteSystem>

<sup>2</sup> <https://www.gov.uk/guidance/space-based-pnt-programme>

NEWS EXTRA

### RapidSOS Partners with Hexagon to Power the Future of UK Emergency Response

RapidSOS, the world's first emergency response data platform, has partnered with Hexagon's Safety & Infrastructure division, a global provider of computer-aided dispatch (CAD) software and public safety solutions, to give emergency communications centres across the UK **access to life-saving data**. The partnership is an extension of the existing RapidSOS and Hexagon collaboration in the United States. It brings together two foremost industry experts and is the first stage in moving public safety agencies towards **next-generation (NG999) communications**. By combining Hexagon's innovation in call centre dispatch with the RapidSOS emergency response data platform, the pair are ensuring emergency services around the world have fast, accurate and up-to-date information when responding to accidents, critical incidents and health emergencies. [www.hexagon.com](http://www.hexagon.com)

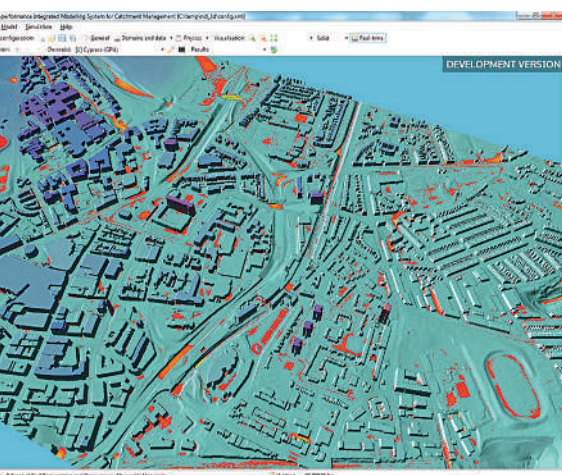
### Topcon Lined Up as Expert Partner for Digital Skills Initiative

Topcon Positioning GB has joined forces with Digital Construction Skills (DCS), which has been awarded funding from the Construction Industry Training Board (CITB) and Innovate UK, to help provide the skills and knowledge needed to ensure the industry is fit for the future. Topcon has become an **Expert Partner** for the construction skills and training consultancy, DCS, to offer its expertise and technology, especially around machine control systems, to tackle the industry's looming skills gap and to help accelerate recovery in the wake of the global health crisis. The technology provider will offer **online training sessions, digital demonstrations and on-hand experts** for those accessing DCS support, all fully funded by CITB. [www.topconpositioning.com](http://www.topconpositioning.com)



### Newcastle University Pioneers Hyper-Resolution Flood Risk Modelling using Bluesky 3D Aerial Survey Data

Newcastle University is developing advanced computer modelling to assess the flood risk of individual properties using **LiDAR data** and **oblique aerial photography** from Bluesky. The project will use **Artificial Intelligence** to extract information from other datasets, including old reports and flood asset registers, and bring this together with weather and traffic sensors, for example, to provide a dynamic online platform for hyper local, near real time flood risk assessments. Providing real world context and accuracy, the Bluesky data enables visualisations of evolving events that will enable flood risk managers to employ **just in time maintenance** and **alleviation methods**, such as clearing blocked drains or setting up mobile defences. [www.bluesky-world.com](http://www.bluesky-world.com)



## Cadcorp SIS 9 service release widens access to addressing

Geographical Information Systems (GIS) software company, Cadcorp, has made significant updates in its latest service release of Cadcorp SIS 9. Geocoding has become easier. Using up-to-date property and street databases, geocoding in **Cadcorp SIS Desktop** enables searching based on Unique Property Reference Number (via OS Open UPRN) and Unique Street Reference Number (via OS Open USRN). These search local databases, built using data downloaded from the **OS Data Hub Downloads API**. Updated databases are issued every month and Cadcorp users can download these for the most up-to-date searches. Alternatively, users can now geocode place names and locations directly against the **OS Data Hub Names API**. Users of the OS Code-Point Open geocoder are now able to add their own new postcode units, or edit the locations of existing units, in order to keep up with local changes. [www.cadcorp.com](http://www.cadcorp.com)

## Ordnance Survey and UK PropTech Association announce partnership

OS has become an official partner of the UKPA and during 2021 the two organisations will work together to promote the value of geospatial data and the transformational potential it has for both the **PropTech** and wider property industry. The new partnership provides an opportunity to demonstrate to UKPA members how **OS data**, products and APIs can make it simpler and quicker for PropTech and property business to use geospatial data to support their own products and services and pass benefits to their customers. It is also a chance to show how using OS data creates the right circumstances for PropTech innovation to thrive. In July 2020 OS launched its new **OS Data Hub** giving users greater access and easier usability to OS's premium geospatial data than ever before. [www.ordnancesurvey.co.uk](http://www.ordnancesurvey.co.uk)



## MGISS Announces Office Move to Accommodate Accelerated Growth

Fast-growing technology company Mobile GIS Services (MGISS) is moving to larger, self-contained premises in Liverpool, UK, following a **record-breaking year** which saw its turnover increase by **20 percent** despite restrictions imposed by the pandemic. MGISS is a specialist in high-accuracy integrated solutions for field operations - including pioneering **Augmented Reality** technology for visualising buried pipes and cables - used for managing assets and supply recovery in the utilities and infrastructure sectors. The company is moving from its existing premises to new facilities within the **Baltic Triangle** area of the city. The new facility on Jamaica Street will provide MGISS staff with much-needed flexible space to accommodate more staff with a plan to double the workforce this year. [www.mgiss.co.uk](http://www.mgiss.co.uk)

## thinkWhere Wins Contract to Open Up Access to European Mapping

thinkWhere has been awarded a major contract to develop a gateway that will provide **easy online access** to official maps from more than 40 European countries. The Scottish cloud IT company and specialist in geospatial data and open-source technology, will work alongside project lead EuroGeographics on the '**Open Maps for Europe**' project which is designed to increase the use of open data to boost the development of **innovative location-based services**, driving economic growth and increasing competitiveness by reducing costs. As part of the Open Maps for Europe project, thinkWhere will design, develop and deliver an easy-to-use **gateway to data** including topographic maps, 3D height models, aerial photography and gazetteer data. [www.thinkwhere.com](http://www.thinkwhere.com)



## 1Spatial announce the release of 1DataGateway 2.3.0

1Spatial, a global provider of Location Master Data Management (LMDM) software and solutions, announced the general release of 1Data Gateway v2.3.0. 1Data Gateway is a **self-service web-portal** for spatial data validation, processing and analytics that harness the power of the rules engine **1Integrate** in the cloud or on premise. Its power and simplicity allows users to manage their data supply chain all the way through to integration to their core platform, keeping workflows secure, no matter the size of their organisation. New 1Data Gateway features in this latest release include: **REST API enhancements**, including the ability to access data quality, validation and user statistics through external dashboarding tools such as **Esri ArcGIS Dashboards**, Improved support for cloning data stores (available from 1Integrate 2.8.1) and Internationalisation of the User Interface (new Spanish option added). [www.1spatial.com](http://www.1spatial.com)



# UNMATCHED GNSS PERFORMANCE

SPEED, ACCURACY AND PRODUCTIVITY LIKE NEVER BEFORE

Trimble's R12i delivers unmatched performance in challenging environments thanks to IMU-based tilt compensation and ProPoint GNSS technology



## Accurate

Survey grade positioning using any combination of GNSS signals



## Reliable

Empowering surveyors through real-time error estimates in Trimble Access



## Productive

Faster convergence means less time spent measuring points in the field

RTK precision and new signal filtering mean the R12i excels even in the most difficult locations, such as urban environments and under dense tree coverage. Tilt compensation lets you forget about levelling the pole - you'll do more than ever before.

"Very impressed with the R12i...the tilt function is amazing and the fact you can get coverage under tree canopies is a game changer" - Costain Group

GET IN TOUCH TODAY

UK 0345 603 1214

Ireland 01 456 4702

Email [info@korecgroup.com](mailto:info@korecgroup.com)

Scan me



[www.korecgroup.com](http://www.korecgroup.com)